

24.71+/- Acre Recreational or Investment Property in Copiah County, MS



2191 Splitchley Road
Hazlehurst, MS 39083

\$68,000

If you are looking for a recreational, investment, or homesite property in Copiah County, MS, look no further than the 24.71+/-acre tract just south of Hazlehurst, MS. This 10-year-old planted pine cutover has all the features you are looking for. The pines will offer thick bedding for wildlife and future income, while the strip of hardwoods on the back property line provides diverse habitats and excellent hunting opportunities. Although the property slopes to the back, there is ample space for a homesite or camp, and electricity is already available at the road.

Directions from the intersection of I-55 and Tower Road in Hazlehurst, MS: Take exit 56 and travel east on tower road for .5 miles. Merge onto Old Hwy 51 and travel .4 miles. Cross Hwy 51 onto Martinsville Road and travel for .6 miles. Turn left onto Spitchley Road and travel for 1.8 miles the property will be on the left.

[Google Maps](#)



Call me today!

CLIF CANNON, REALTOR®
Clif@TomSmithLand.com
601.990.5070 office | 601.565.1070 cell



TomSmithLandandHomes.com

Information is believed to be accurate but not guaranteed.



Call me today!

CLIF CANNON, REALTOR

Clif@TomSmithLand.com

601.990.5070 office | 601.565.1070 cell



TomSmithLandandHomes.com

Information is believed to be accurate but not guaranteed.

Aerial Map

Interactive Map

24.71+/- Acres

31.8099, -90.3953

ABNEY LN

SPITCHLEV

Call me today!

CLIF CANNON, REALTOR®

Clif@TomSmithLand.com

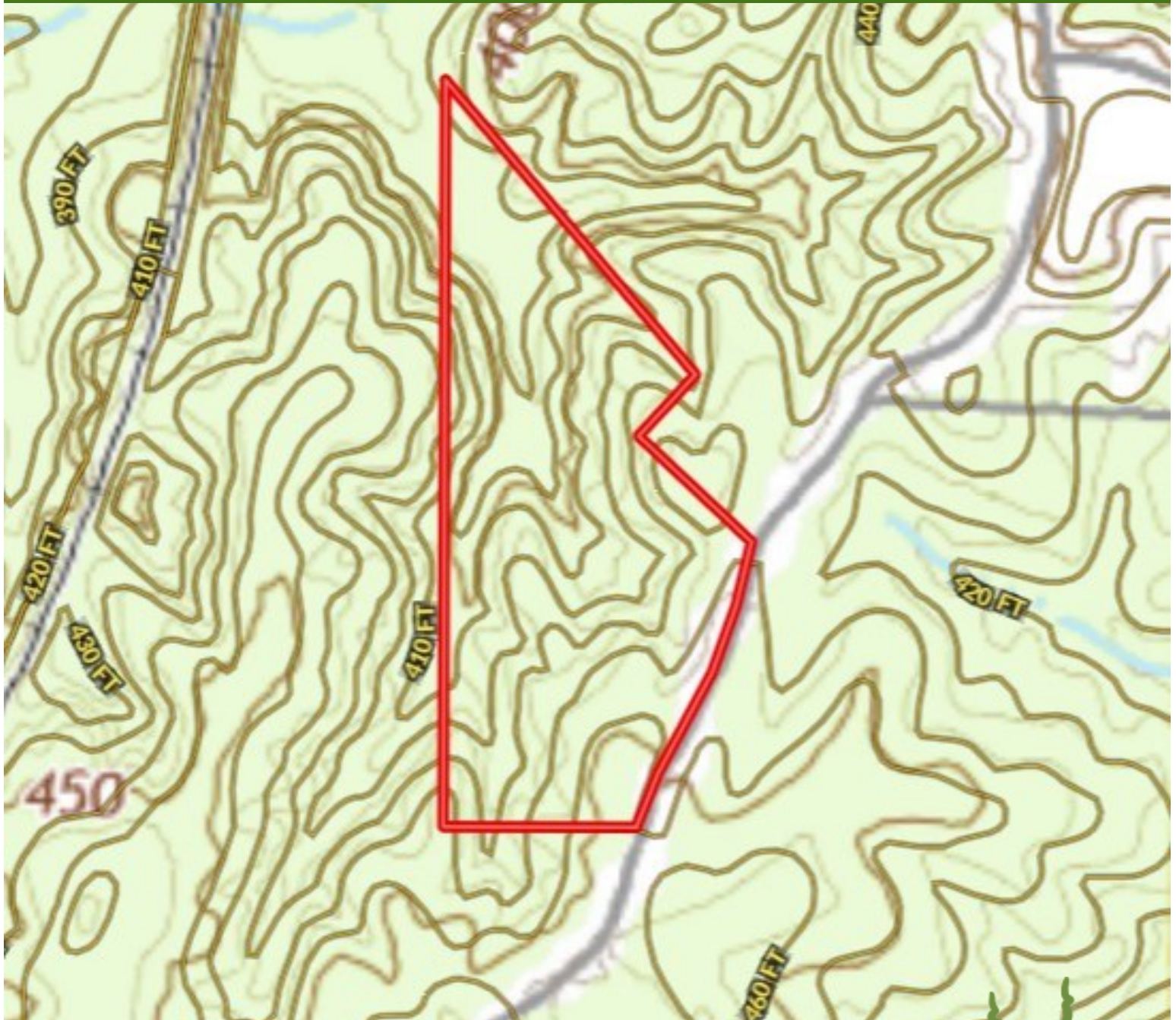
601.990.5070 office | 601.565.1070 cell



TomSmithLandandHomes.com

Information is believed to be accurate but not guaranteed.

Topographic Map



Call me today!

CLIF CANNON, REALTOR®

Clif@TomSmithLand.com

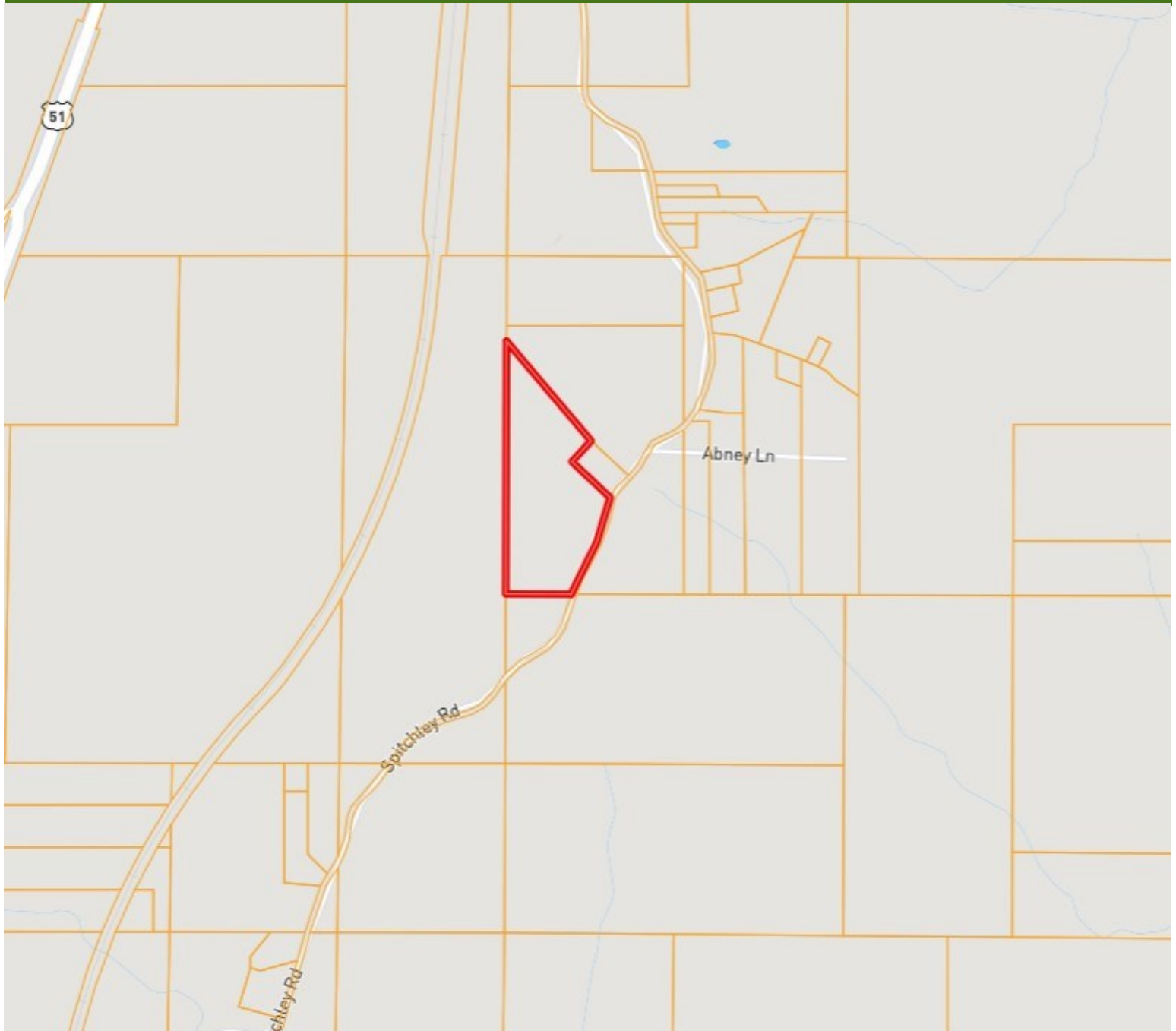
601.990.5070 **office** | 601.565.1070 **cell**



TomSmithLandandHomes.com

Information is believed to be accurate but not guaranteed.

Ownership Map



Call me today!

CLIF CANNON, REALTOR®

Clif@TomSmithLand.com

601.990.5070 **office** | 601.565.1070 **cell**



Expect More. Get More.

TomSmithLandandHomes.com

Information is believed to be accurate but not guaranteed.

Flood Map



Call me today!

CLIF CANNON, REALTOR®

Clif@TomSmithLand.com

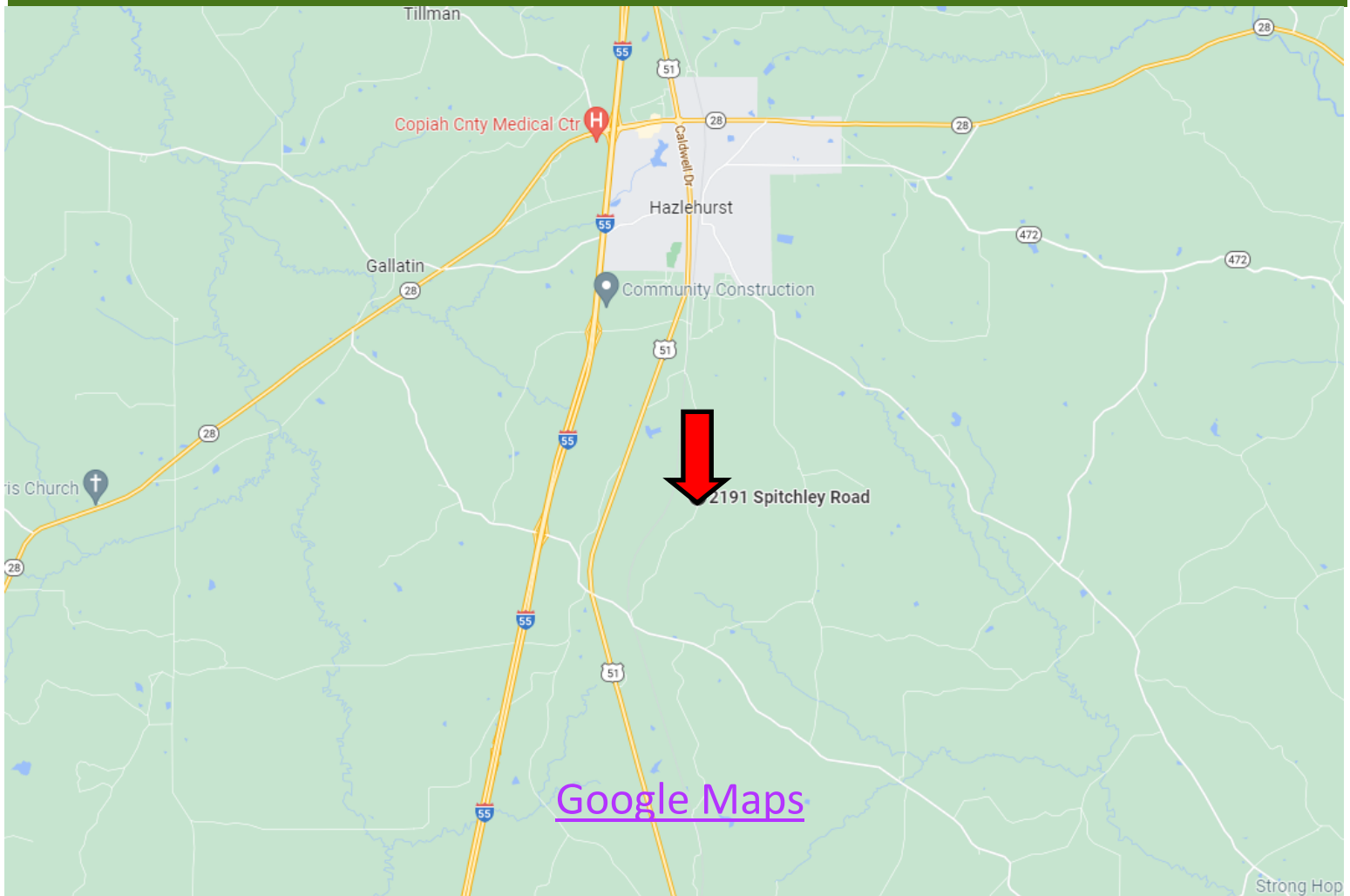
601.990.5070 **office** | 601.565.1070 **cell**



TomSmithLandandHomes.com

Information is believed to be accurate but not guaranteed.

Directional Map



Directions from the intersection of I-55 and Tower Road in Hazlehurst, MS: Take exit 56 and travel east on tower road for .5 miles. Merge onto Old Hwy 51 and travel .4 miles. Cross Hwy 51 onto Martinsville Road and travel for .6 miles. Turn left onto Spitchley Road and travel for 1.8 miles the property will be on the left.

2191 Spitchley Road
Hazlehurst, MS 39083

Call me today!

CLIF CANNON, REALTOR®
Clif@TomSmithLand.com
601.990.5070 **office** | 601.565.1070 **cell**



TomSmithLandandHomes.com

Information is believed to be accurate but not guaranteed.