

Beautiful Home In Florence, MS



Amazing home located in the town of Florence, on Star Road, in Rankin County, MS. This home offers a spacious three bedroom two bath floor plan along with a large owners' suite and bathroom. The home features a large open den that is great for relaxing and set up for entertainment. The home has a nice kitchen with plenty of room and all stainless steel appliances. There is a huge backyard which makes it perfect for kids or pets! There is a two-car garage and a big driveway to offer plenty of parking. There is a front porch facing the beautiful front yard, perfect for sitting and relaxing. There is also a huge back porch of approximately 22ftX24ft, great for entertaining people! This property offers ample storage, including four buildings protected from the elements and one equipment shed for covered parking. The home was built in 1994 and is approximately 1,973 square feet heated and cooled on an approximately 2-acre lot.

For your private viewing, call Preston or Travis today!

[Google Map Link](#)



PRESTON SMITH, MANAGING BROKER
Preston@TomSmithLand.com
601.990.5070 **office** | 601.209.7150 **cell**



Expect More. Get More.

Call us today!

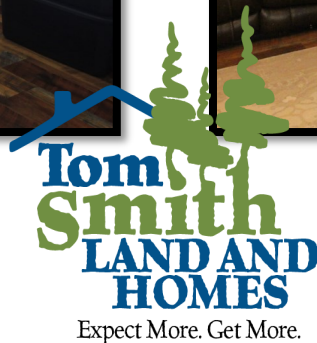


TRAVIS SMITH, REALTOR®
Travis@TomSmithLand.com
601.990.5070 **office** | 601.600.0428 **cell**

TomSmithLandandHomes.com

Information is believed to be accurate but not guaranteed.





PRESTON SMITH, MANAGING BROKER
Preston@TomSmithLand.com
 601.990.5070 **office** | 601.209.7150 **cell**

TRAVIS SMITH, REALTOR®
Travis@TomSmithLand.com
 601.990.5070 **office** | 601.600.0428 **cell**

TomSmithLandandHomes.com

Information is believed to be accurate but not guaranteed.



Shop With Garage Door



- 20ftX25ft
- 10ft roll up door
- Standard man door
- This shop has gas heat
- Plenty of storage
- Offers more covered parking
- Electric Garage Door
- Could be used as workshop

PRESTON SMITH, MANAGING BROKER
Preston@TomSmithLand.com
601.990.5070 **office** | 601.209.7150 **cell**



TRAVIS SMITH, REALTOR®
Travis@TomSmithLand.com
601.990.5070 **office** | 601.600.0428 **cell**

TomSmithLandandHomes.com

Information is believed to be accurate but not guaranteed.



Climate Controlled Storage or Office



- 16ftX20ft storage building
- The building has AC and heat
- There is an RV hookup on the outside
- Could be used as an office



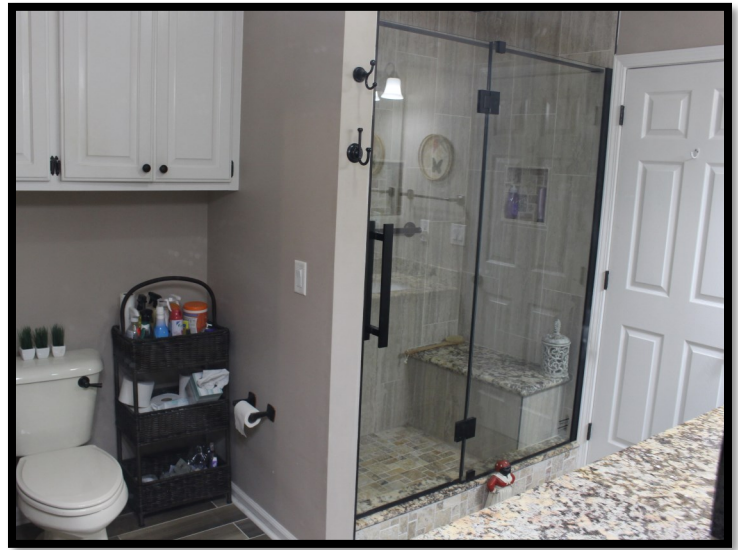
PRESTON SMITH, MANAGING BROKER
Preston@TomSmithLand.com
601.990.5070 **office** | 601.209.7150 **cell**

TRAVIS SMITH, REALTOR®
Travis@TomSmithLand.com
601.990.5070 **office** | 601.600.0428 **cell**

TomSmithLandandHomes.com

Information is believed to be accurate but not guaranteed.





PRESTON SMITH, MANAGING BROKER
Preston@TomSmithLand.com
601.990.5070 **office** | 601.209.7150 **cell**



TRAVIS SMITH, REALTOR®
Travis@TomSmithLand.com
601.990.5070 **office** | 601.600.0428 **cell**

TomSmithLandandHomes.com

Information is believed to be accurate but not guaranteed.



Huge Unfinished Metal Building With Tons of Potential!



- 20ftX60ft
- Fully insulated
- Plumbing and electric started but needs to be finished
- Single roll up door on one side
- Double roll up door on the other side
- Plenty of storage
- 1bedroom 2bathrooms

PRESTON SMITH, MANAGING BROKER
Preston@TomSmithLand.com
601.990.5070 **office** | 601.209.7150 **cell**



TRAVIS SMITH, REALTOR®
Travis@TomSmithLand.com
601.990.5070 **office** | 601.600.0428 **cell**

TomSmithLandandHomes.com

Information is believed to be accurate but not guaranteed.



Double Door Storage Building and Equipment Shed



- 20ftX11ft
- Double door
- Lots of room for storage

- 20ftX18ft
- Covered parking for equipment or recreational vehicles

PRESTON SMITH, MANAGING BROKER
Preston@TomSmithLand.com
601.990.5070 **office** | 601.209.7150 **cell**



TRAVIS SMITH, REALTOR®
Travis@TomSmithLand.com
601.990.5070 **office** | 601.600.0428 **cell**

TomSmithLandandHomes.com

Information is believed to be accurate but not guaranteed.



AERIAL MAP



CLICK [HERE](#) FOR AN INTERACTIVE MAP



PRESTON SMITH, MANAGING BROKER
Preston@TomSmithLand.com
601.990.5070 **office** | 601.209.7150 **cell**

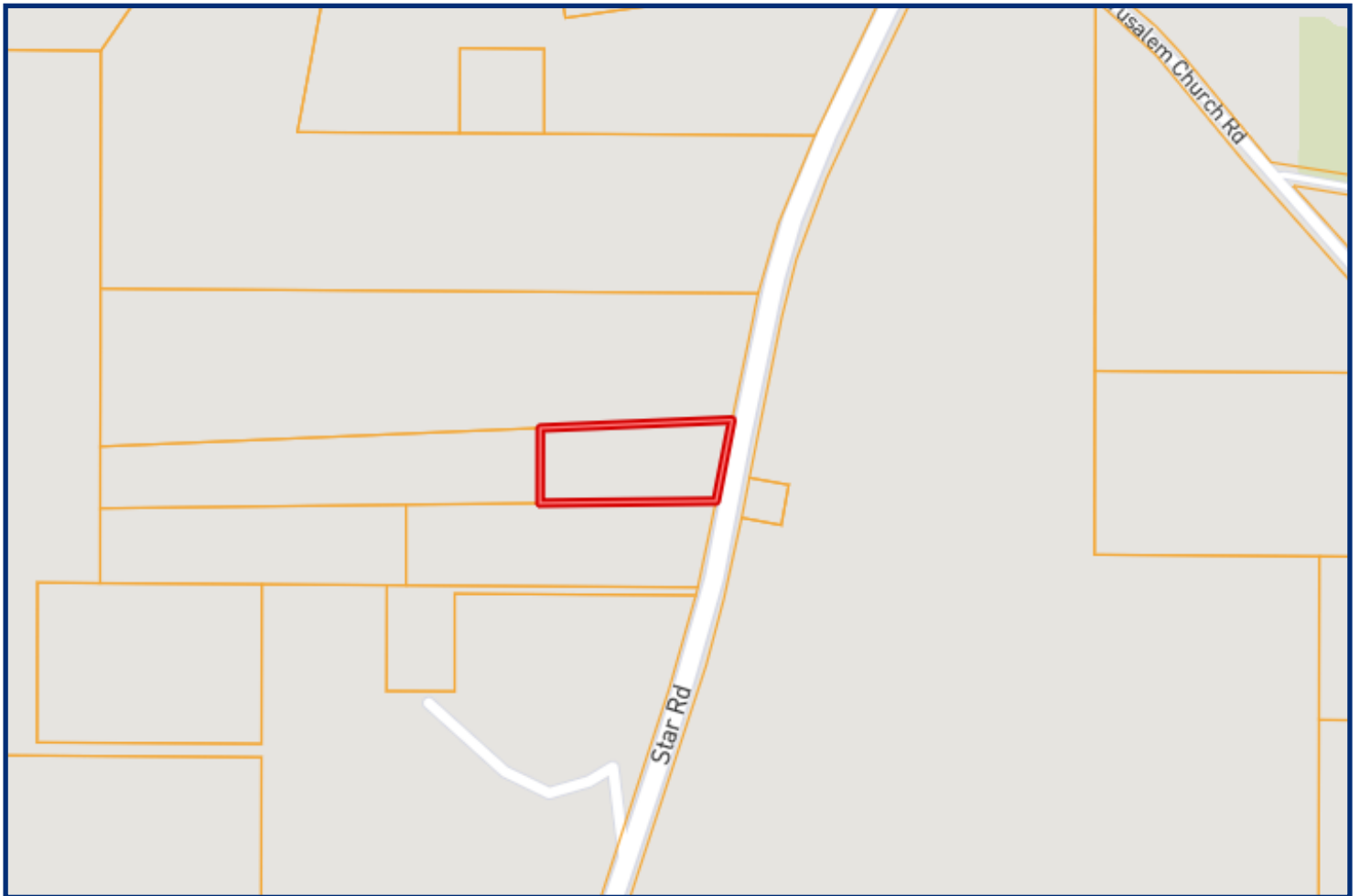
TRAVIS SMITH, REALTOR®
Travis@TomSmithLand.com
601.990.5070 **office** | 601.600.0428 **cell**

TomSmithLandandHomes.com

Information is believed to be accurate but not guaranteed.



OWNERSHIP MAP



PRESTON SMITH, MANAGING BROKER
Preston@TomSmithLand.com
601.990.5070 **office** | 601.209.7150 **cell**



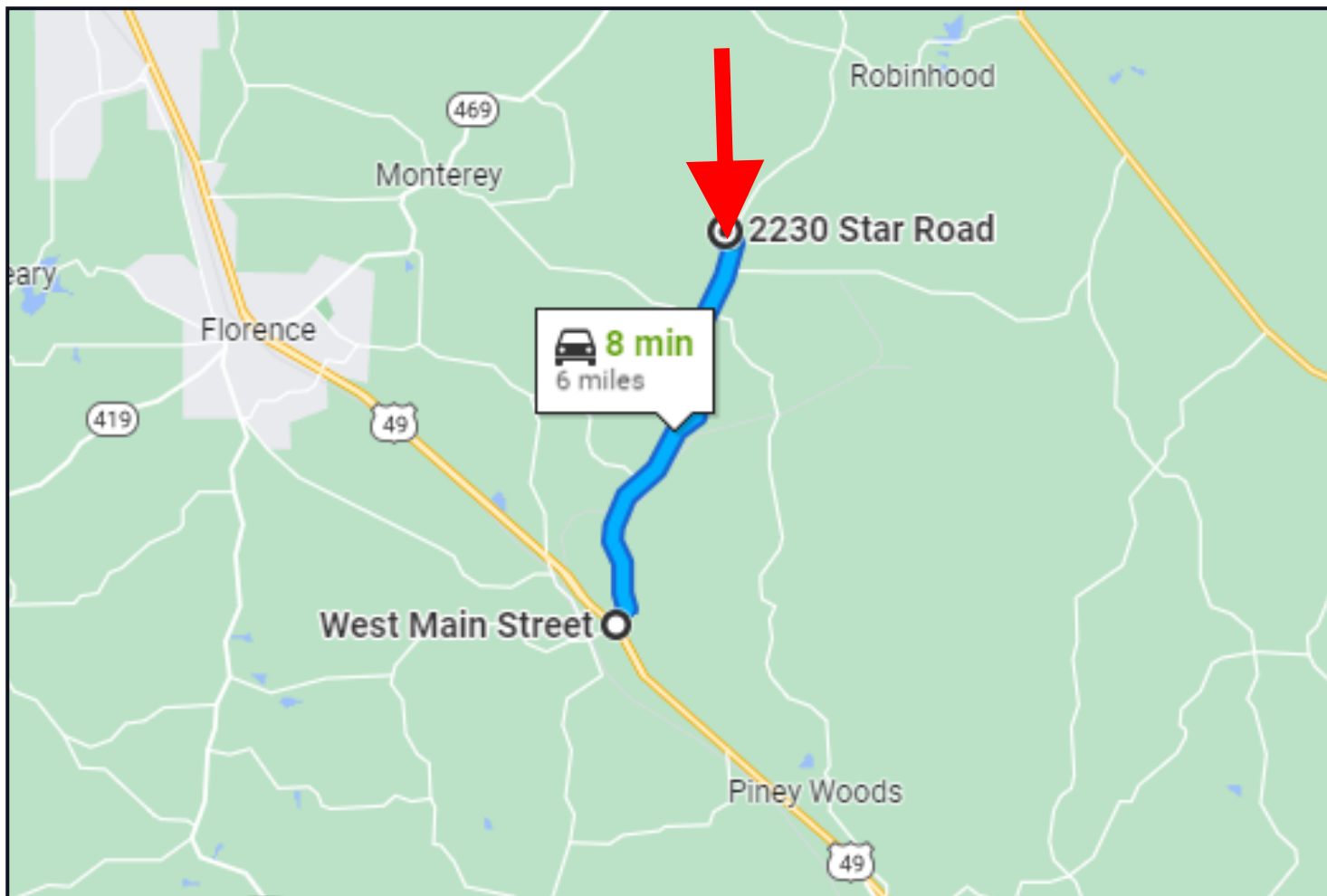
TRAVIS SMITH, REALTOR®
Travis@TomSmithLand.com
601.990.5070 **office** | 601.600.0428 **cell**

TomSmithLandandHomes.com

Information is believed to be accurate but not guaranteed.



DIRECTIONAL MAP



DIRECTIONS FROM INTERSECTION OF HWY 49 NORTH BOUND AND STAR RD: Turn right off of Hwy 49 onto Star Rd and travel for 5.9 miles and the property will be on your left.

Address: 2230 Star Rd Florence, MS

[Google Map Link](#)



PRESTON SMITH, MANAGING BROKER
Preston@TomSmithLand.com
601.990.5070 **office** | 601.209.7150 **cell**



Expect More. Get More.

Call us today!



TRAVIS SMITH, REALTOR®
Travis@TomSmithLand.com
601.990.5070 **office** | 601.600.0428 **cell**

TomSmithLandandHomes.com

Information is believed to be accurate but not guaranteed.

