

MADISON COUNTY HOME ON 48.4+/- ACRES

362 Robinson Springs Road Flora, MS 39071



- 48.4± Acres in Madison County, MS
- 1± acre pond with bass and bream (managed by SE management)
- Large detached shop with oversized garage door with full bathroom and separate cooled work area
- Antique barn and shed
- A mix of pasture land and woods
- Madison School District
- Deer and turkey abound

- 3,960 sq. ft home
- 5 bedrooms
- 3.5 baths
- Formal living and dining
- Keeping room
- Huge Florida Room and screened in porch
- 1/2 Mile of Frontage on Robinson Springs Road
- Extra Parking Areas



Call me today!

ELLEN SMITH, MANAGING BROKER
Ellen@TomSmithHomes.com
601.898.2772 **office** | 601.954.9395 **cell**



TomSmithLandandHomes.com

Information is believed to be accurate but not guaranteed.



This breathtaking 48.4+/- acre property is located inside Flora, MS, in Madison County. The 3,960 square foot, five bedroom, 3 1/2 bath home is surrounded by a beautifully landscaped yard extending to 3+ acres of pastures and, beyond that, are wooded acres abundant with deer and turkey. There is also a 1-acre pond that is a fisherman's dream, filled with bass and bream. The home is spacious and meticulously laid out, with many areas to relax and unwind. There is a formal living room and a formal dining room, with a large kitchen with an island centrally located in the house. Off the kitchen is a beautiful, vaulted living room with a fireplace with shelving. In addition to this sitting room, there is a vast Florida sunroom with a fireplace and a screened-in porch that offers gorgeous views of the pond and pastures. The laundry room and half bath are conveniently located downstairs, with the primary suite. The primary bedroom has two large walk-in closets and double vanities in the bath. There are four large bedrooms upstairs with two baths, one of which is shared between two of the bedrooms. There is a two-car garage, and beyond the house is an additional sizeable, detached shop with an oversized garage door for easy access, a separate cooled work area, and a full bath. The pasture has an antique barn and shed, which is great for storing hay! This beautiful property in the Madison Central School District will make you feel far out in the country, except it is only a few minutes from the charming town of Flora and the convenience of Madison. This is a must-see property!!! Call to make an appointment today! This property won't last long!

Call me today!

ELLEN SMITH, MANAGING BROKER
 Ellen@TomSmithHomes.com
 601.898.2772 **office** | 601.954.9395 **cell**



Expect More. Get More.



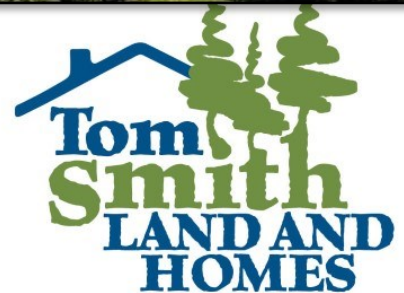
TomSmithLandandHomes.com

Information is believed to be accurate but not guaranteed.



Call me today!

ELLEN SMITH, MANAGING BROKER
 Ellen@TomSmithHomes.com
 601.898.2772 **office** | 601.954.9395 **cell**



Expect More. Get More.



TomSmithLandandHomes.com

Information is believed to be accurate but not guaranteed.



Call me today!

ELLEN SMITH, MANAGING BROKER
 Ellen@TomSmithHomes.com
 601.898.2772 **office** | 601.954.9395 **cell**



Expect More. Get More.



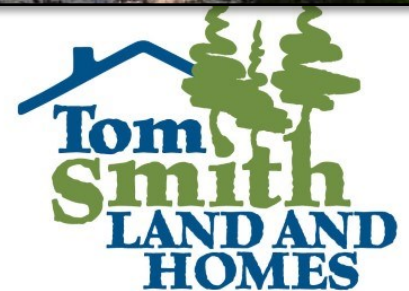
TomSmithLandandHomes.com

Information is believed to be accurate but not guaranteed.



Call me today!

ELLEN SMITH, MANAGING BROKER
 Ellen@TomSmithHomes.com
 601.898.2772 **office** | 601.954.9395 **cell**



Expect More. Get More.



TomSmithLandandHomes.com

Information is believed to be accurate but not guaranteed.



Call me today!

ELLEN SMITH, MANAGING BROKER
 Ellen@TomSmithHomes.com
 601.898.2772 **office** | 601.954.9395 **cell**



Expect More. Get More.



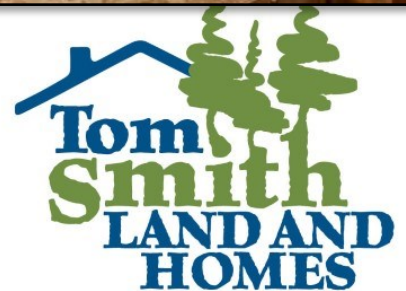
TomSmithLandandHomes.com

Information is believed to be accurate but not guaranteed.



Call me today!

ELLEN SMITH, MANAGING BROKER
Ellen@TomSmithHomes.com
601.898.2772 **office** | 601.954.9395 **cell**



Expect More. Get More.



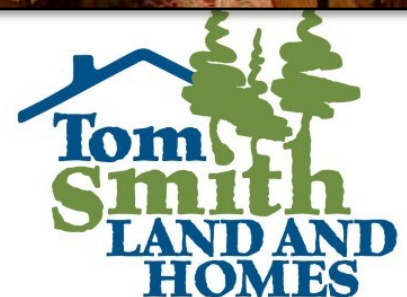
TomSmithLandandHomes.com

Information is believed to be accurate but not guaranteed.



Call me today!

ELLEN SMITH, MANAGING BROKER
Ellen@TomSmithHomes.com
601.898.2772 **office** | 601.954.9395 **cell**



TomSmithLandandHomes.com

Information is believed to be accurate but not guaranteed.



Call me today!

ELLEN SMITH, MANAGING BROKER
Ellen@TomSmithHomes.com
601.898.2772 **office** | 601.954.9395 **cell**



Expect More. Get More.



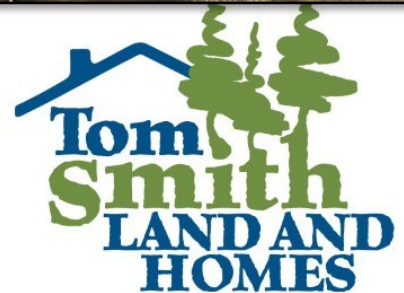
TomSmithLandandHomes.com

Information is believed to be accurate but not guaranteed.



Call me today!

ELLEN SMITH, MANAGING BROKER
Ellen@TomSmithHomes.com
601.898.2772 **office** | 601.954.9395 **cell**



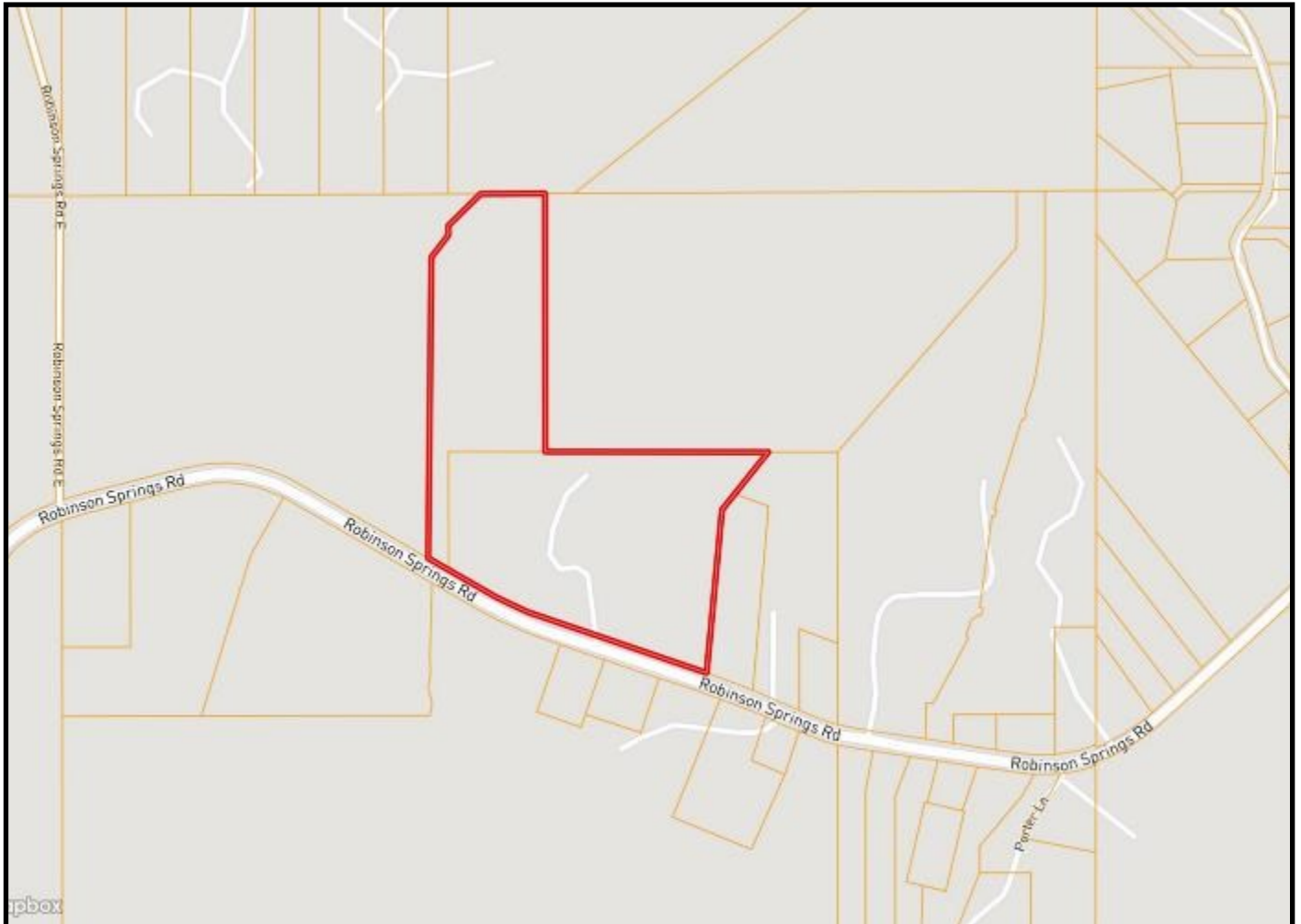
Expect More. Get More.



TomSmithLandandHomes.com

Information is believed to be accurate but not guaranteed.

Ownership Map



*Call me
today!*

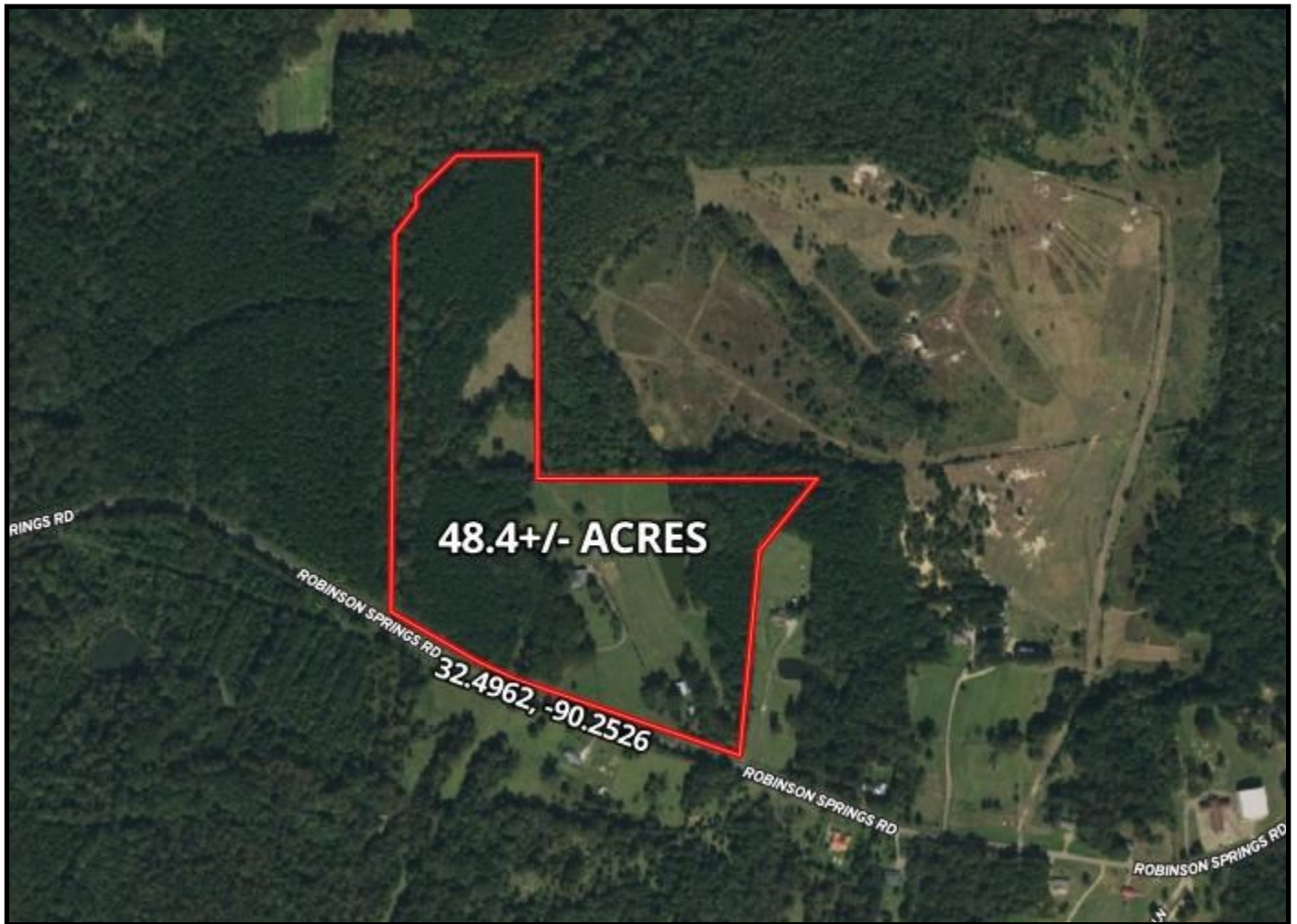
ELLEN SMITH, MANAGING BROKER
Ellen@TomSmithHomes.com
601.898.2772 **office** | 601.954.9395 **cell**



TomSmithLandandHomes.com

Information is believed to be accurate but not guaranteed.

Aerial Map



[Click Here for an Interactive Map](#)

*Call me
today!*

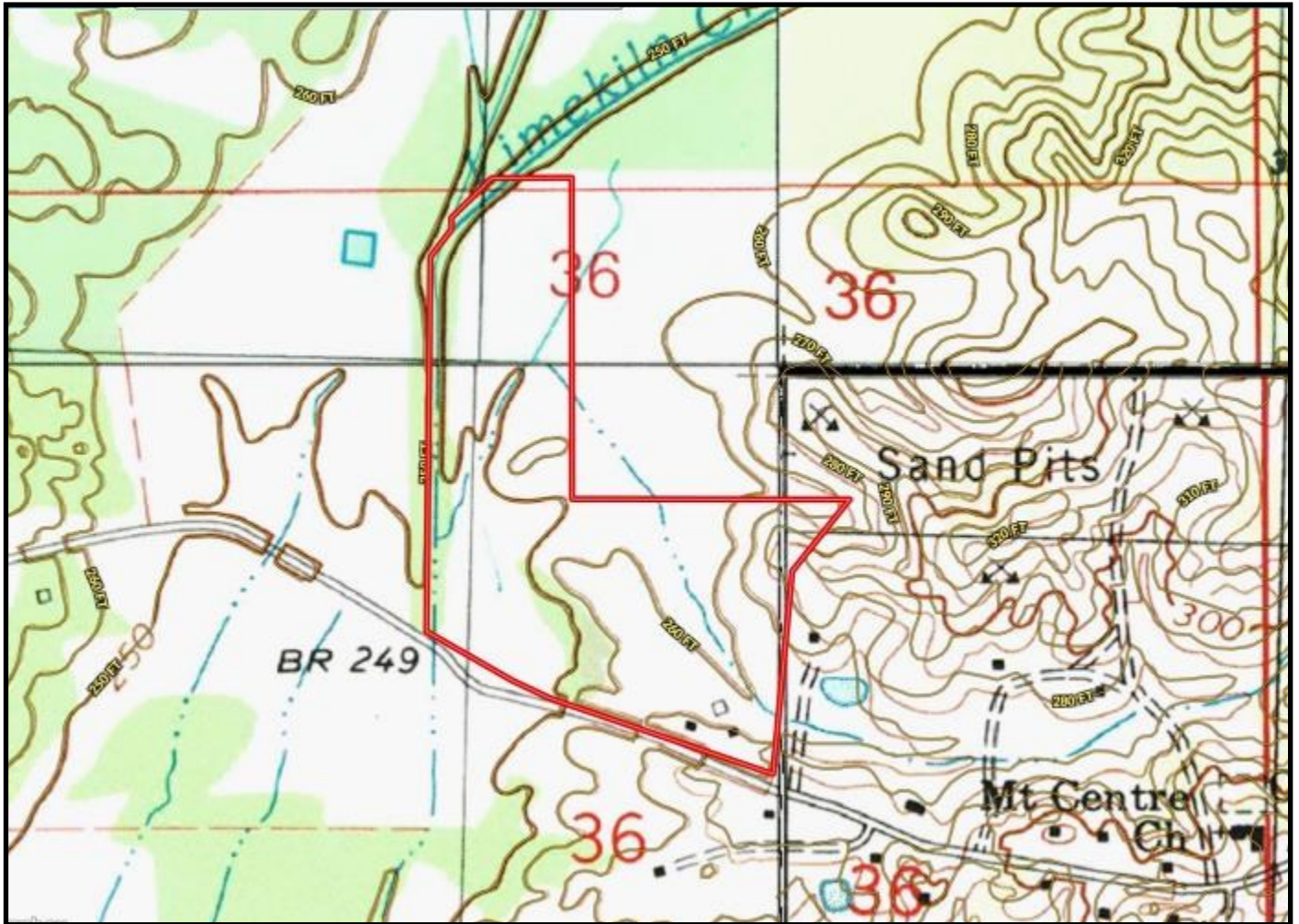
ELLEN SMITH, MANAGING BROKER
Ellen@TomSmithHomes.com
601.898.2772 **office** | 601.954.9395 **cell**



TomSmithLandandHomes.com

Information is believed to be accurate but not guaranteed.

Topo Map



Call me today!

ELLEN SMITH, MANAGING BROKER
Ellen@TomSmithHomes.com
601.898.2772 **office** | 601.954.9395 **cell**

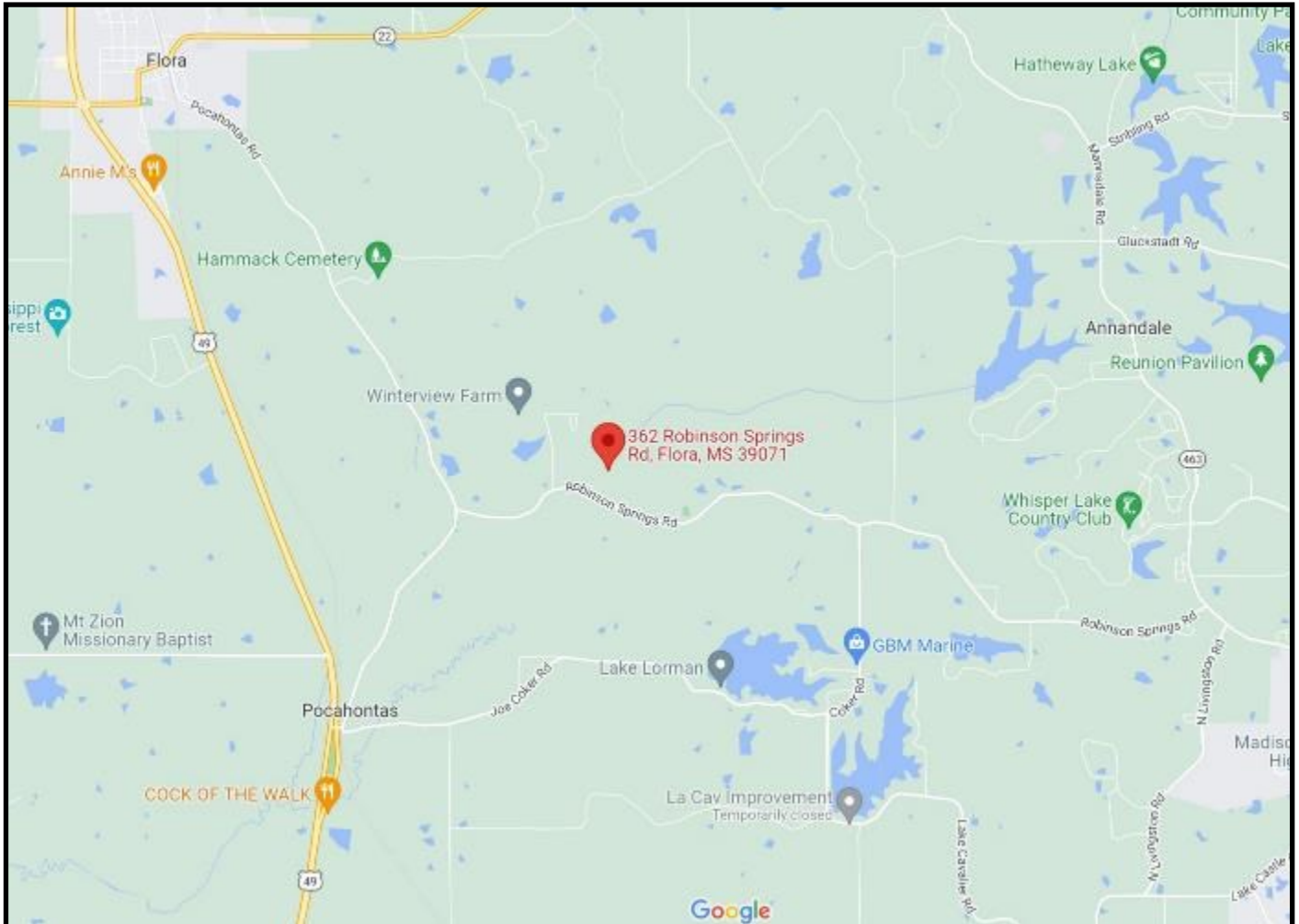


Expect More. Get More.

TomSmithLandandHomes.com

Information is believed to be accurate but not guaranteed.

Directional Map



DIRECTIONS FROM I-55 and Hwy 463 in Madison, MS: Travel Hwy 463 for 2.5 miles. Turn left onto Robinson Springs Rd and travel 4.9 miles. The entrance to the home will be on the right.



Call me today!

ELLEN SMITH, MANAGING BROKER
Ellen@TomSmithHomes.com
601.898.2772 **office** | 601.954.9395 **cell**



TomSmithLandandHomes.com

Information is believed to be accurate but not guaranteed.