

HUNTING RETREAT

25± ACRES IN JEFFERSON DAVIS COUNTY, MS



\$70,000

River hunting at its finest! This 25+/- acre Jefferson Davis County, MS tract sits on the Bouie River and could be the perfect outdoor getaway! The possibilities are endless: big deer, wild hogs, turkeys, and fishing. This property has an excellent hardwood timber mix and could be a good investment. The property is only a short drive from Louisiana or Jackson, Mississippi. You could be enjoying your family retreat in no time. Give David Belden or Pete a call and schedule your private showing today!



DAVID BELDEN, REALTOR®
DBelden@TomSmithLand.com
601.898.2772 office | 601.415.3884 cell



Expect More. Get More.

Call us today!



PETE PRISOCK, ASSOCIATE BROKER
Pete@TomSmithHomes.com
601.898.2772 office | 601.291.5863 cell

TomSmithLandandHomes.com

Information is believed to be accurate but not guaranteed.





Expect More. Get More.

Call us today!

DAVID BELDEN, REALTOR®
DBelden@TomSmithLand.com
601.898.2772 office | 601.415.3884 cell

PETE PRISOCK, ASSOCIATE BROKER
Pete@TomSmithHomes.com
601.898.2772 office | 601.291.5863 cell

TomSmithLandandHomes.com

Information is believed to be accurate but not guaranteed.





Expect More. Get More.

Call us today!

DAVID BELDEN, REALTOR®
DBelden@TomSmithLand.com
601.898.2772 office | 601.415.3884 cell

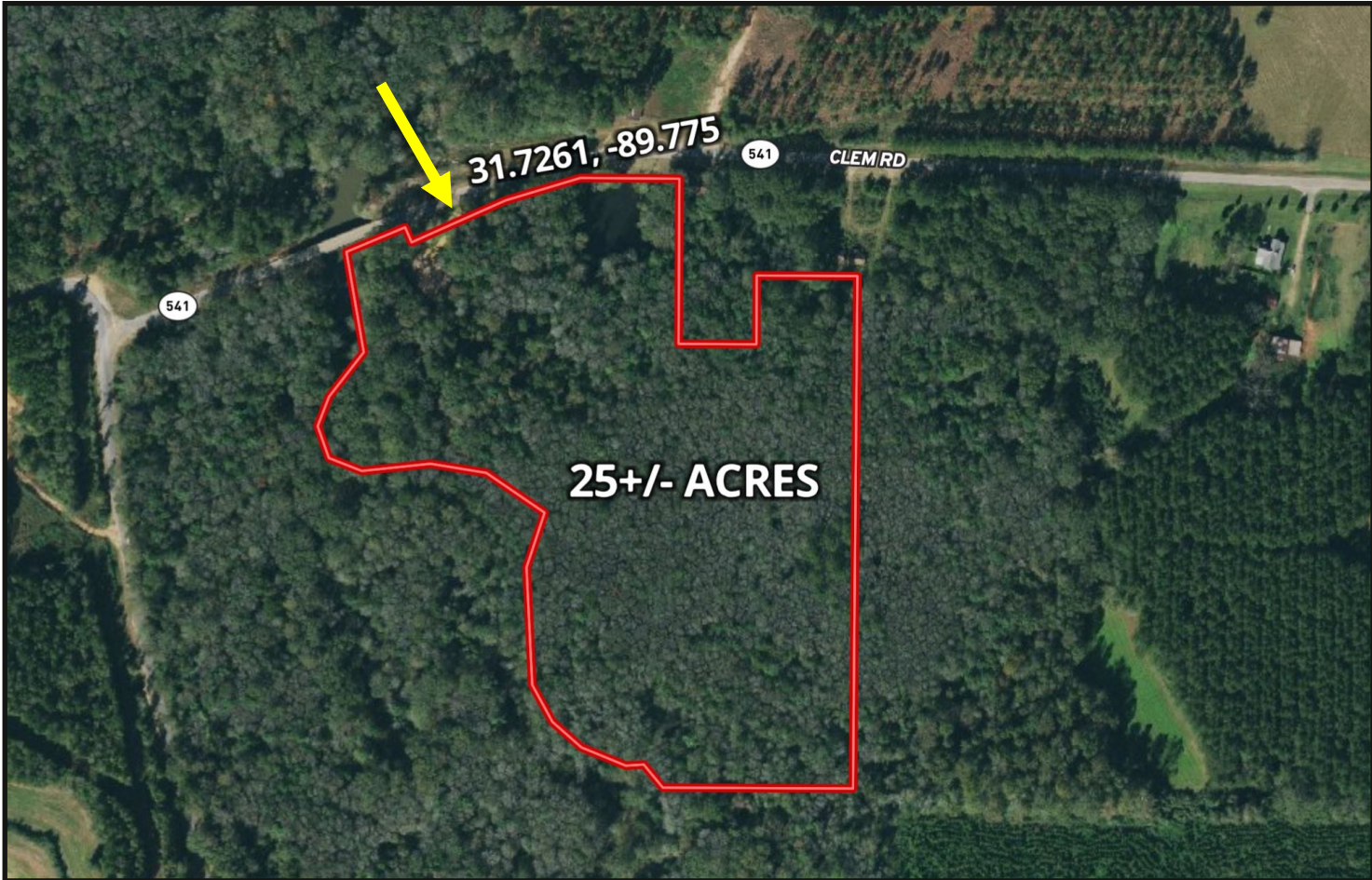
PETE PRISOCK, ASSOCIATE BROKER
Pete@TomSmithHomes.com
601.898.2772 office | 601.291.5863 cell

TomSmithLandandHomes.com

Information is believed to be accurate but not guaranteed.



AERIAL MAP



[CLICK HERE FOR AN INTERACTIVE MAP](#)



DAVID BELDEN, REALTOR®
DBelden@TomSmithLand.com
601.898.2772 office | 601.415.3884 cell

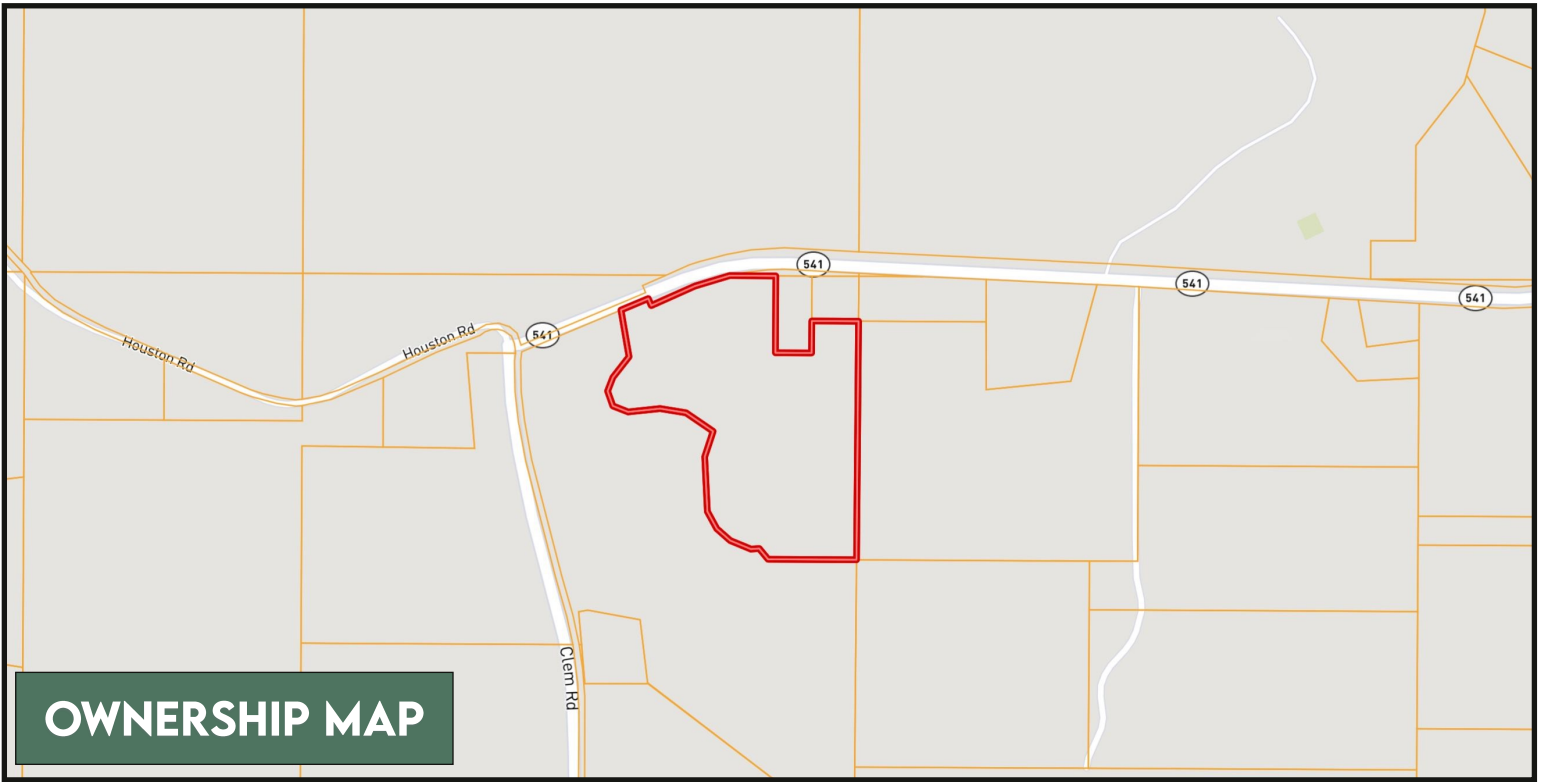
Call us today!

PETE PRISOCK, ASSOCIATE BROKER
Pete@TomSmithHomes.com
601.898.2772 office | 601.291.5863 cell

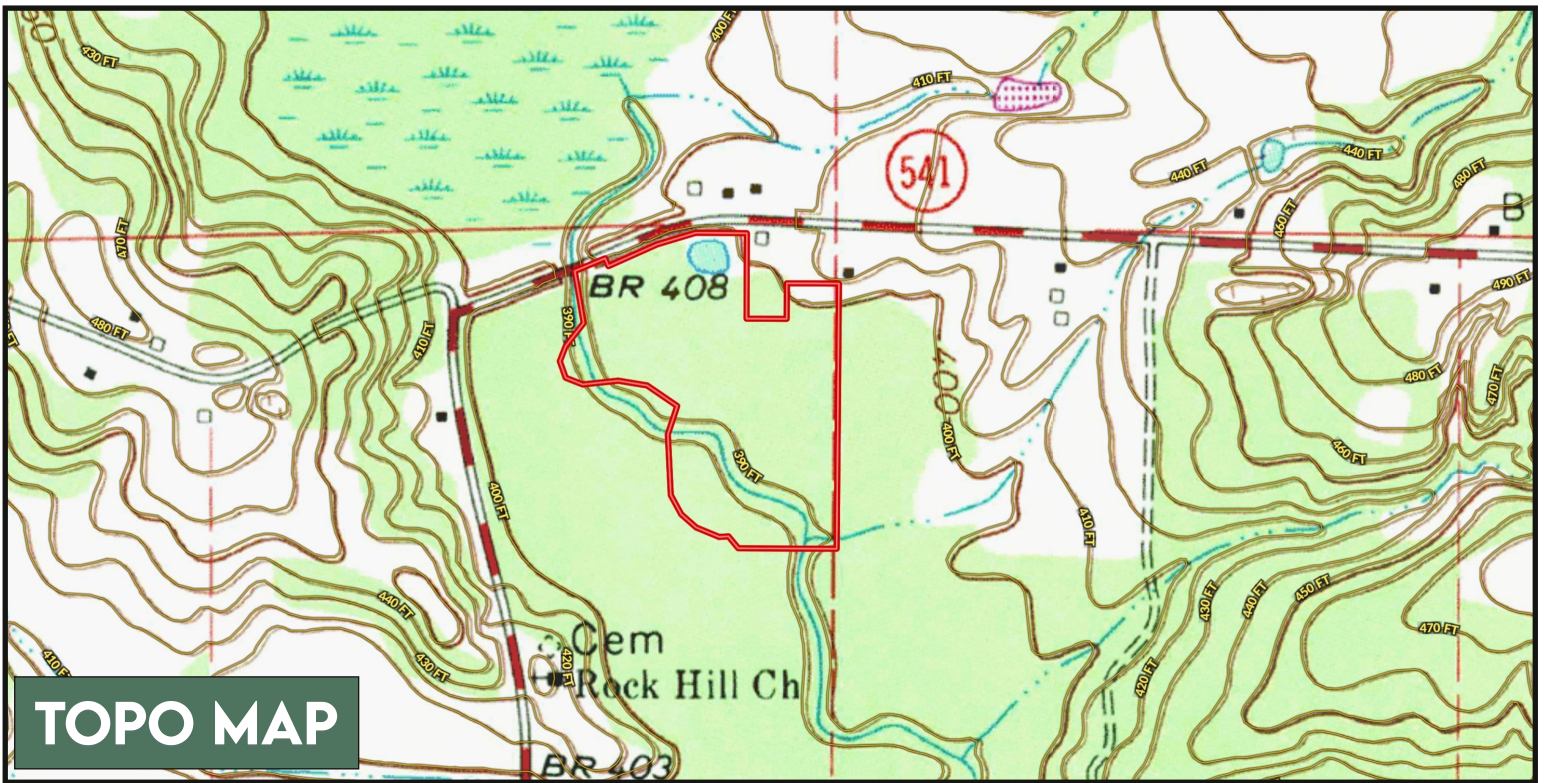
TomSmithLandandHomes.com

Information is believed to be accurate but not guaranteed.





OWNERSHIP MAP



TOPO MAP



Expect More. Get More.

Call us today!

DAVID BELDEN, REALTOR®
 DBelden@TomSmithLand.com
 601.898.2772 office | 601.415.3884 cell

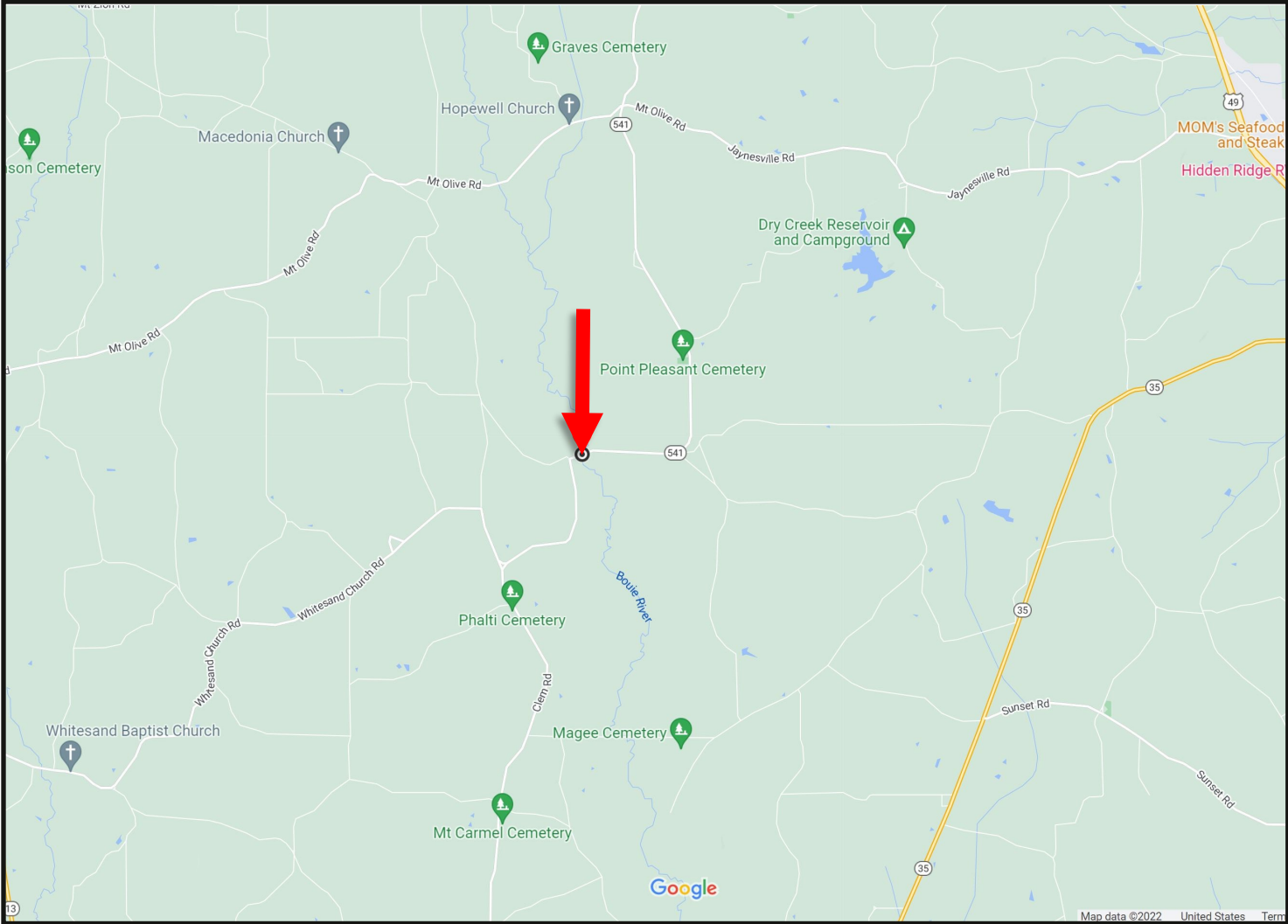
PETE PRISOCK, ASSOCIATE BROKER
 Pete@TomSmithHomes.com
 601.898.2772 office | 601.291.5863 cell

TomSmithLandandHomes.com

Information is believed to be accurate but not guaranteed.



DIRECTIONAL MAP



Directions from Hwy 49 and Jaynesville Rd. in Mt. Olive, MS: Travel Jaynesville Rd. to Johnson Stewart Rd for 4 miles. Turn right on Hwy 35 S .4 miles and take an immediate left onto Garner Rd./Hwy 541 and travel for 9.1 miles. The property will be on your left. [GOOGLE MAP LINK](#)



DAVID BELDEN, REALTOR®
DBelden@TomSmithLand.com
601.898.2772 office | 601.415.3884 cell



Expect More. Get More.

Call us today!



PETE PRISOCK, ASSOCIATE BROKER
Pete@TomSmithHomes.com
601.898.2772 office | 601.291.5863 cell

