

6.6 +/- Acre Residential Tract Lincoln County, MS



\$39,900

Look no further if you have been searching for an unrestricted parcel in the West Lincoln School District. This 6.6+/- acre tract in Lincoln County, MS, is fully wooded with some interior trails. The scattered oaks throughout the property would look amazing in your future yard. Electric through Magnolia Electric is available at the public road. In addition, a short deeded easement accesses property from Cannon Trail in Bogue Chitto, Mississippi, giving you a little extra seclusion or privacy. Take your chance to own this tract in the Johnson Grove Community; call Blake Sasser today.

Directions

From Interstate 55 at Exit 38 in Brookhaven: Head SW on US-84 W for 0.5 miles. Turn left onto Cowart Lane SW and proceed for 0.1 miles. Continue onto Auburn Drive SW for 2.8 miles. Turn left onto Johnson Grove Road SW then drive for 0.2 miles. Turn left toward Cannon Trail SW for 0.1 miles then make right onto Cannon Trail SW for another 0.1 miles. Destination is on your left.



Call me today!

BLAKE SASSER, REALTOR®
Blake@TomSmithLand.com
601.990.5070 office | 601.757.5027 cell



TomSmithLandandHomes.com





Call me today!

BLAKE SASSER, REALTOR®
Blake@TomSmithLand.com
601.990.5070 **office** | 601.757.5027 **cell**



TomSmithLandandHomes.com

Information is believed to be accurate but not guaranteed.

Aerial Map



Click [here](#) for an interactive map link.

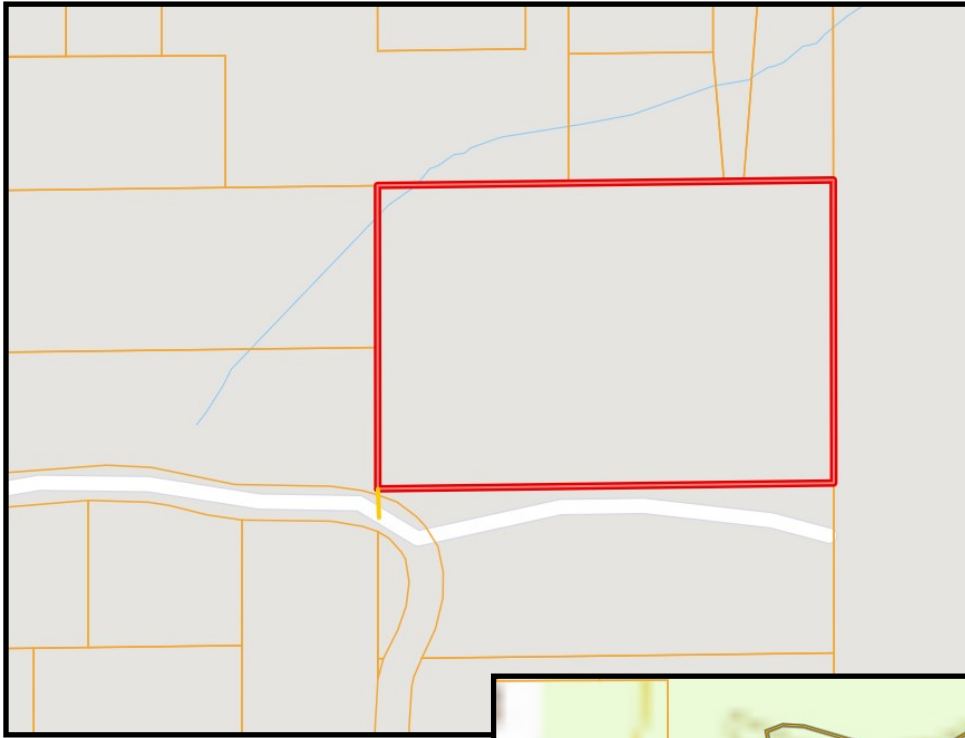
Call me today!

BLAKE SASSER, REALTOR®
Blake@TomSmithLand.com
601.990.5070 **office** | 601.757.5027 **cell**



TomSmithLandandHomes.com

Information is believed to be accurate but not guaranteed.



**Ownership
Map**



Topo Map

Call me today!

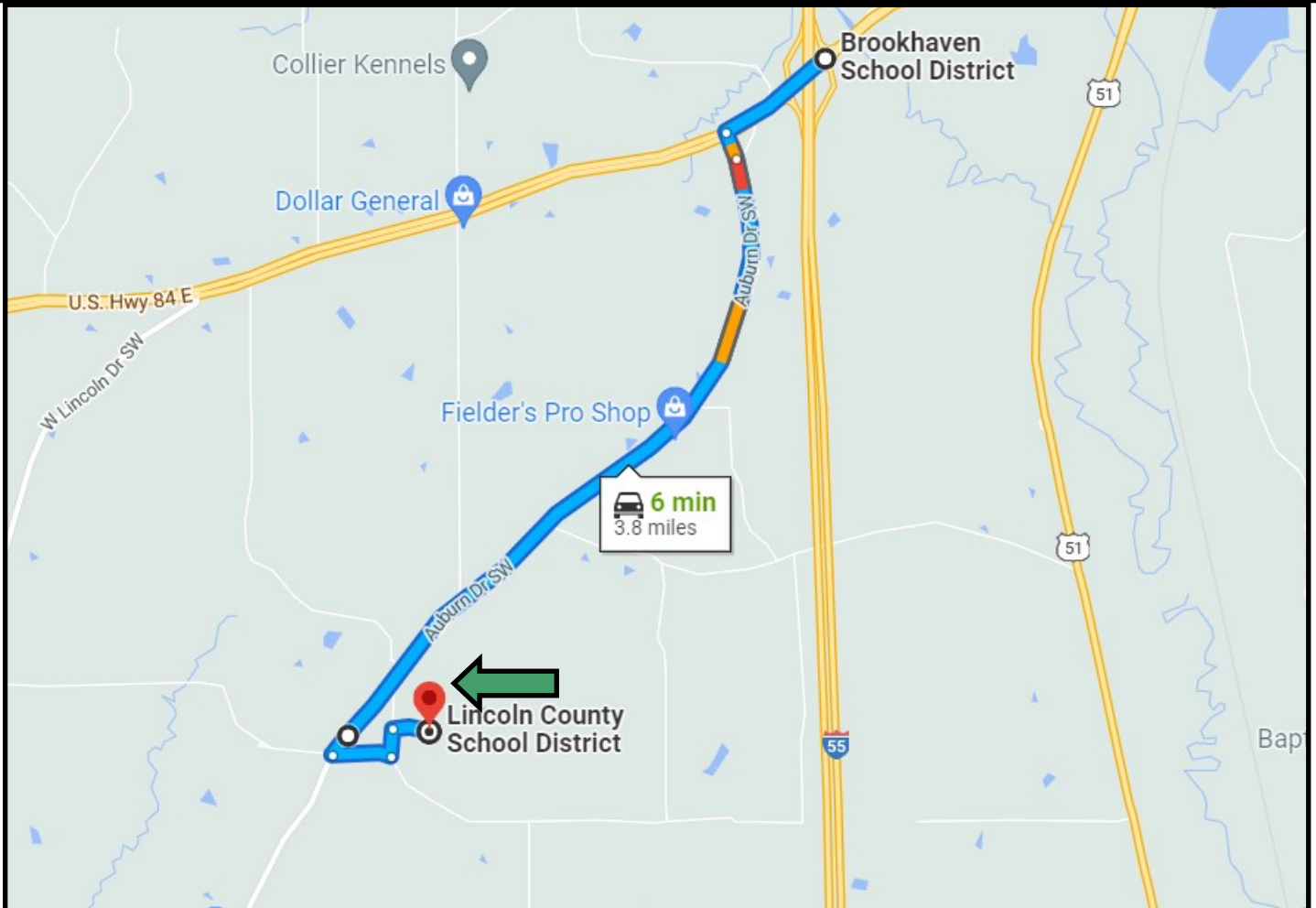
BLAKE SASSER, REALTOR®
Blake@TomSmithLand.com
601.990.5070 **office** | 601.757.5027 **cell**



TomSmithLandandHomes.com

Information is believed to be accurate but not guaranteed.

Directional Map



Directions

From Interstate 55 at Exit 38 in Brookhaven: Head Southwest on US-84 W for 0.5 miles. Turn left onto Cowart Lane Southwest and proceed for 0.1 miles. Continue onto Auburn Drive Southwest for 2.8 miles. Turn left onto Johnson Grove Road Southwest then drive for 0.2 miles. Turn left toward Cannon Trail Southwest for 0.1 miles then make right onto Cannon Trail Southwest for another 0.1 miles. Destination is on your left.

[Google Map Link](#)

Call me today!

BLAKE SASSER, REALTOR®
Blake@TomSmithLand.com
601.990.5070 office | 601.757.5027 cell



TomSmithLandandHomes.com

Information is believed to be accurate but not guaranteed.