

Home on 10+/- Acres in Franklin County, MS



8156 Bogue Chitto Road SE
McCall Creek, MS 39647

\$230,000

Come and see this recently renovated three-bedroom, two-bathroom home sitting on 10+/- acres in the McCall Creek community of Franklin County, MS. This wonderfully quaint home is the perfect starter home or get-away property. This beautiful home has been completely renovated and features new hardwood floors, barn wood ceilings, and accent walls. The kitchen features new appliances as well as concrete countertops and recessed lighting. Both bathrooms have been updated with new tile and fixtures. The large yard offers plenty of room for outdoor entertainment, while the 10+/- acres provide plenty of room for recreation. Located just seven miles from the Homochitto National Forest, this property has everything you are looking for.

Call Clif Cannon to schedule a viewing today!

From the Intersection of US-98 West and Interstate 55 in Summit, MS: Travel west on US-98 for 10.7 miles. Turn Right onto Burt Jordan Road and travel for 5 miles. Turn right onto Bogue Chitto Road and travel for 1.3 miles. The property will be on the right.



[Google Maps](#)

Call me today!

CLIF CANNON, REALTOR®
Clif@TomSmithLand.com
601.990.5070 office | 601.565.1070 cell



TomSmithLandandHomes.com

Information is believed to be accurate but not guaranteed.



Call me today!

CLIF CANNON, REALTOR
Clif@TomSmithLand.com
601.990.5070 office | 601.565.1076 cell



TomSmithLandandHomes.com

Information is believed to be accurate but not guaranteed.



Call me today!

CLIF CANNON, REALTOR

Clif@TomSmithLand.com

601.990.5070 office | 601.565.1070 cell



Expect More. Get More.



TomSmithLandandHomes.com

Information is believed to be accurate but not guaranteed.



Call me today!

CLIF CANNON, REALTOR

Clif@TomSmithLand.com

601.990.5070 office | 601.565.1070 cell

Tom Smith
LAND AND
HOMES

Expect More. Get More.



TomSmithLandandHomes.com

Information is believed to be accurate but not guaranteed.

Aerial Map



[Interactive Map](#)

Call me today!

CLIF CANNON, REALTOR®
Clif@TomSmithLand.com
601.990.5070 office | 601.565.1070 cell



TomSmithLandandHomes.com

Information is believed to be accurate but not guaranteed.

Topographic Map



Call me today!

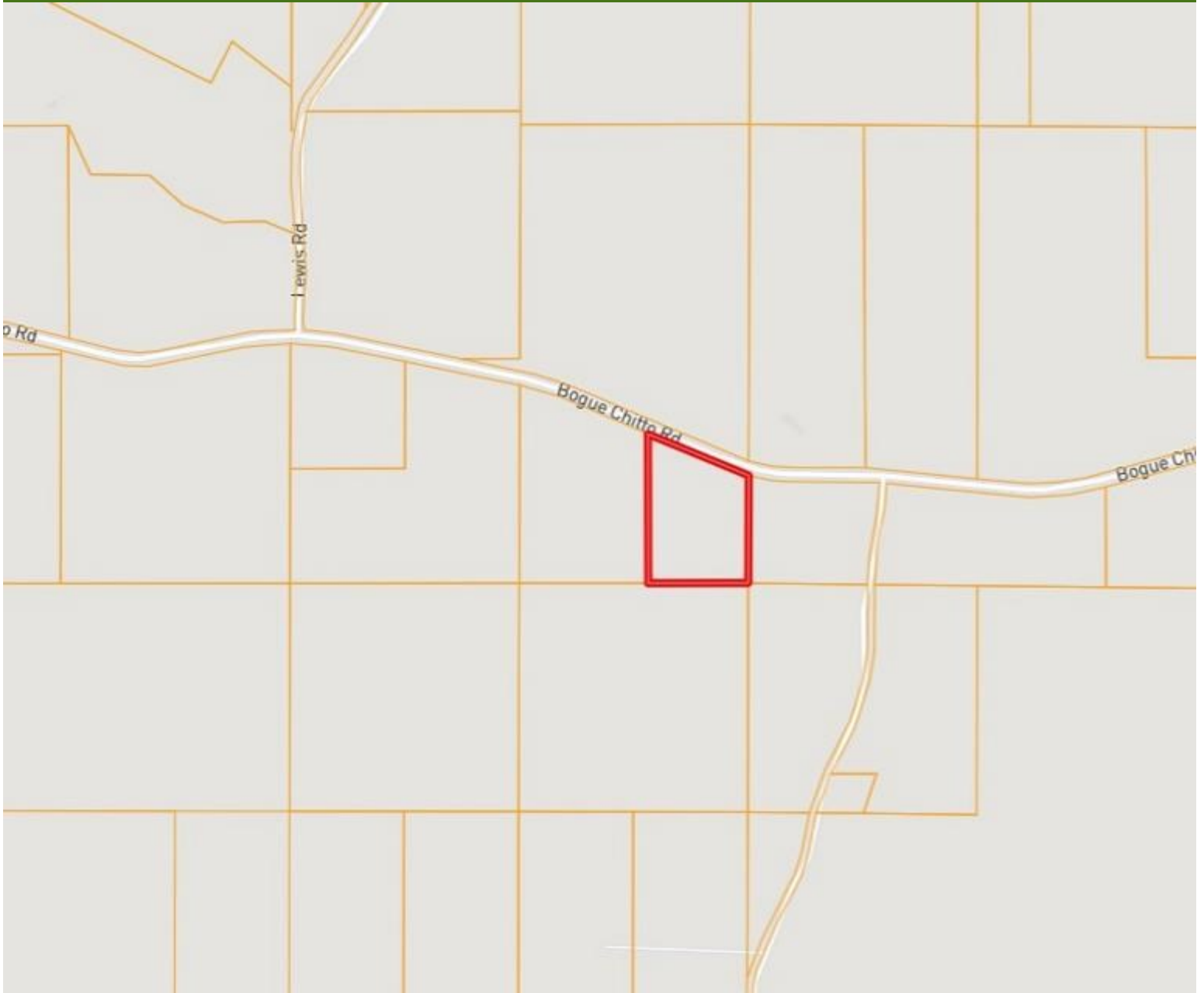
CLIF CANNON, REALTOR®
Clif@TomSmithLand.com
601.990.5070 office | 601.565.1070 cell



TomSmithLandandHomes.com

Information is believed to be accurate but not guaranteed.

Ownership Map



Call me today!

CLIF CANNON, REALTOR®
Clif@TomSmithLand.com
601.990.5070 office | 601.565.1070 cell



TomSmithLandandHomes.com

Information is believed to be accurate but not guaranteed.

Flood Map



Call me today!

CLIF CANNON, REALTOR®

Clif@TomSmithLand.com

601.990.5070 office | 601.565.1070 cell



Expect More. Get More.

TomSmithLandandHomes.com

Information is believed to be accurate but not guaranteed.

Directional Map



[Google Maps](#)

From the Intersection of US-98 West and Interstate 55 in Summit, MS: Travel west on US-98 for 10.7 miles. Turn Right onto Burt Jordan Road and travel for 5 miles. Turn right onto Bogue Chitto Road and travel for 1.3 miles. The property will be on the right.

8156 Bogue Chitto Road SE
McCall Creek, MS 39647

Call me today!

CLIF CANNON, REALTOR®
Clif@TomSmithLand.com
601.990.5070 **office** | 601.565.1070 **cell**



TomSmithLandandHomes.com

Information is believed to be accurate but not guaranteed.