

# Recreational/ Home Site 18+/- Acres in Monroe County, MS

**\$65,000**



Looking for a place to build and have some room to roam? Here is an 18+/- acre tract in Okolona, Monroe County, MS. This property already has a home site cleared with utilities ready to be hooked up. The property consists of mostly cedars on the front, while the back half has a big creek with mature hardwood timber. This property also has 300 feet of road frontage on Smith Drive! It is also only 15 minutes from Okolona, MS and 17 minutes from Aberdeen, MS! To schedule a private showing, call or text Walker!

**Directions from Mississippi Eyewear, Starkville, MS:** Head east on East Main Street toward North Lafayette Street for 194 feet. Then turn left onto North Lafayette Street in .1 miles. Then in 3 miles turn right onto MS-182 / Dr. Martin Luther King Jr Drive East. Then in 6.6 miles take the ramp on the right for US-82 E / MS-12 E / MS-25 N. Then in 16.2 miles take the ramp on the right for MS-25 North/ US-45A North and head toward Tupelo/ West Point. Then in 9.2 miles turn left onto US-45 S/ Highway 45 North. After that turn left in 12 miles onto Old Wren Road. Then in 1.2 miles turn left onto Smith Drive. The property will be on your right in .5 miles.



*Call me today!*

**WALKER TRANUM, REALTOR®**  
Walker@TomSmithHomes.com  
662.268.6333 office | 662.769.1442 cell



**TomSmithLandandHomes.com**

Information is believed to be accurate but not guaranteed



LandReport  
2011-2022  
AMERICA'S  
BEST  
BROKERAGES

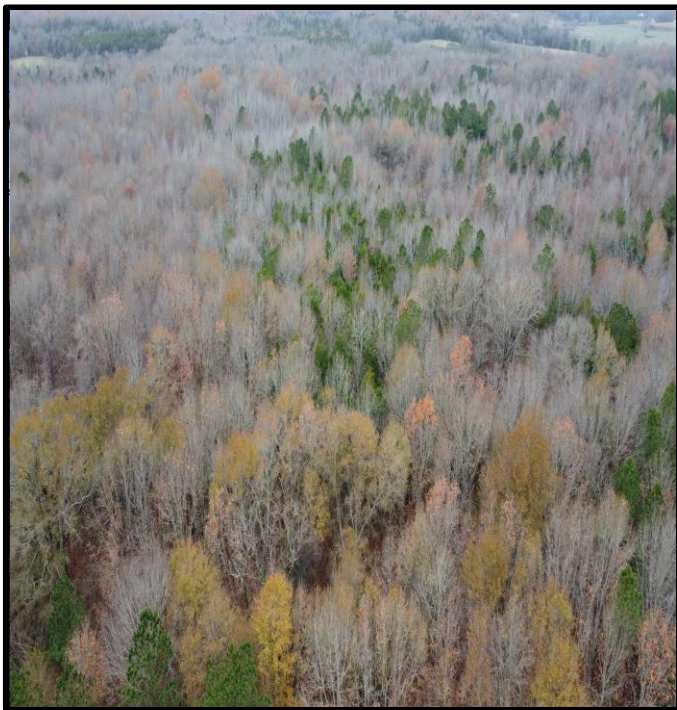
*Call me today!*

**WALKER TRANUM, REALTOR®**  
Walker@TomSmithHomes.com  
662.268.6333 office | 662.769.1442 cell



**TomSmithLandandHomes.com**

Information is believed to be accurate but not guaranteed.



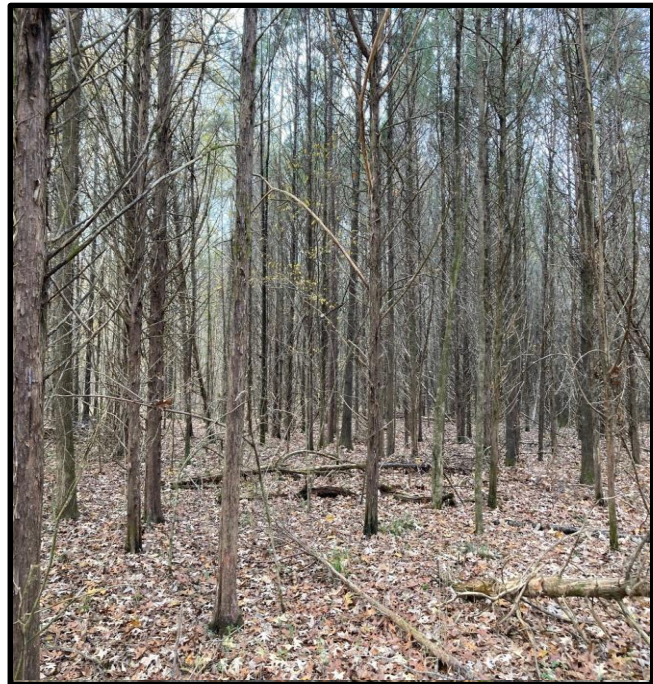
*Call me today!*

**WALKER TRANUM**, REALTOR®  
Walker@TomSmithHomes.com  
662.268.6333 office | 662.769.1442 cell



**TomSmithLandandHomes.com**

Information is believed to be accurate but not guaranteed.



*Call me today!*

**WALKER TRANUM, REALTOR®**  
Walker@TomSmithHomes.com  
662.268.6333 office | 662.769.1442 cell



**TomSmithLandandHomes.com**

Information is believed to be accurate but not guaranteed.

LandReport  
2011-2022  
AMERICA'S  
BEST  
BROKERAGES



*Call me today!*

**WALKER TRANUM, REALTOR®**  
Walker@TomSmithHomes.com  
662.268.6333 office | 662.769.1442 cell

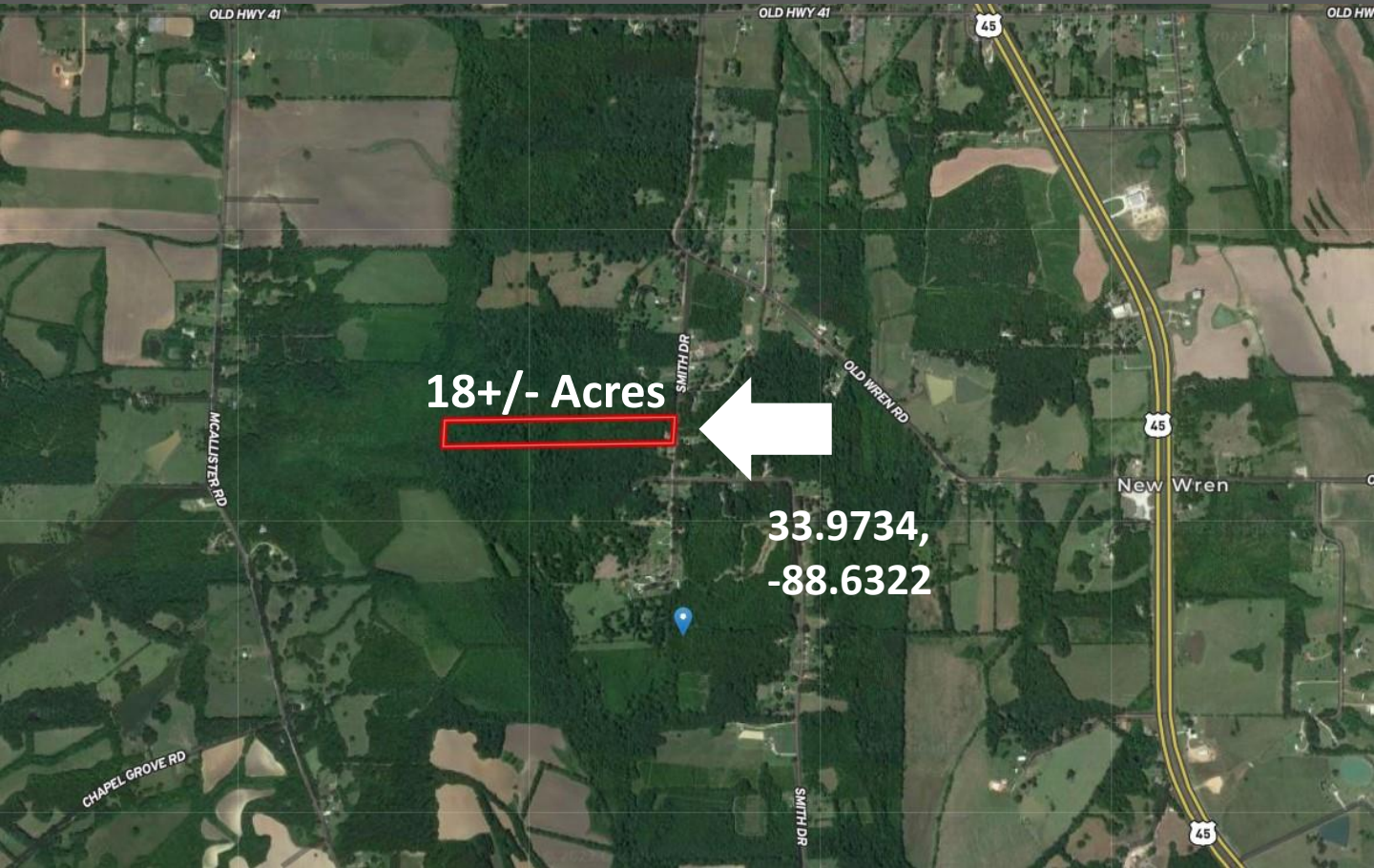


LandReport  
2011-2022  
AMERICA'S  
BEST  
BROKERAGES

**TomSmithLandandHomes.com**

Information is believed to be accurate but not guaranteed.

# Aerial Map



Click [Here](#) for Interactive Link



*Call me today!*

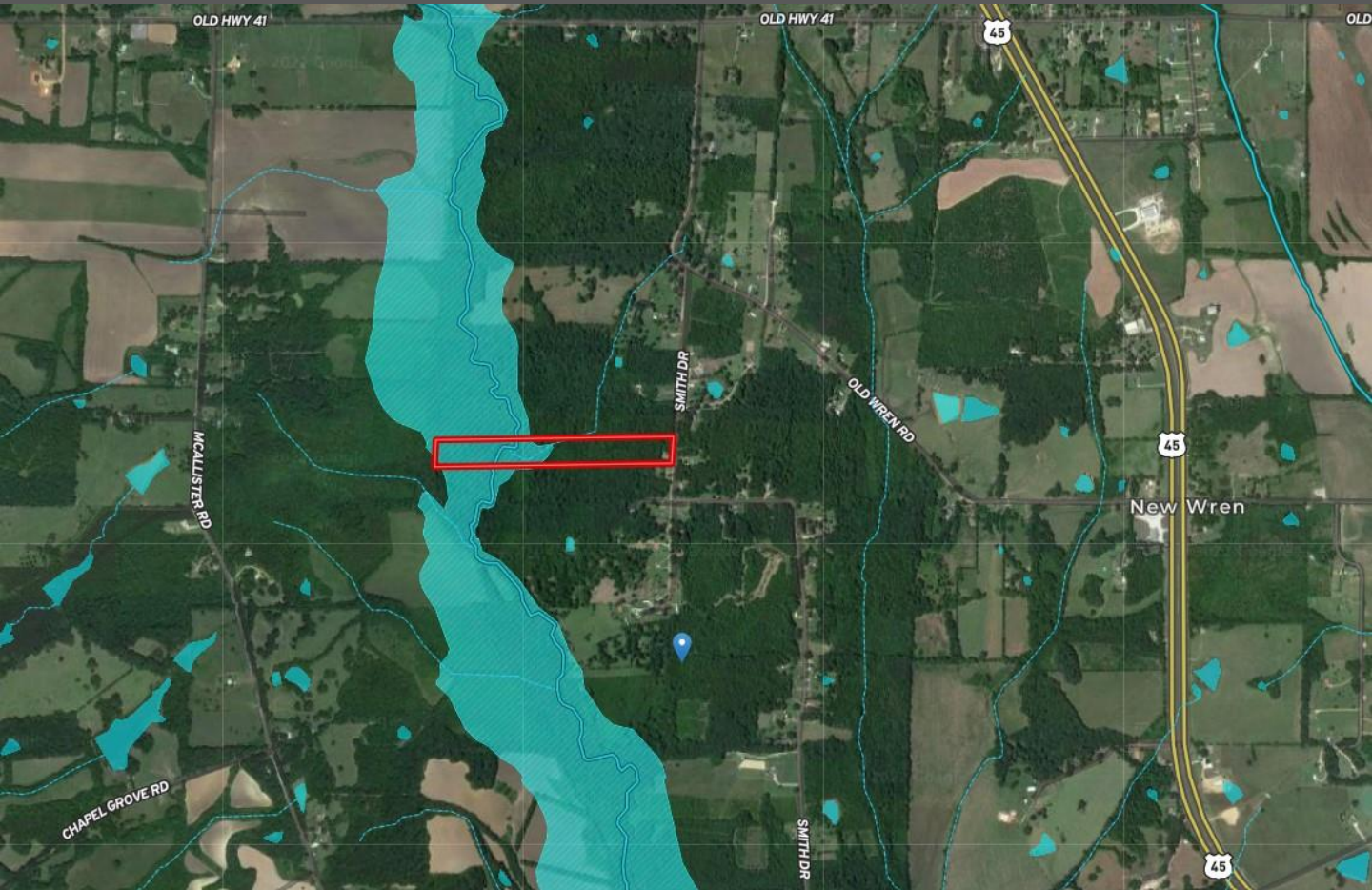
**WALKER TRANUM**, REALTOR®  
Walker@TomSmithHomes.com  
662.268.6333 office | 662.769.1442 cell



**TomSmithLandandHomes.com**

Information is believed to be accurate but not guaranteed.

# Flood Map



*Call me today!*

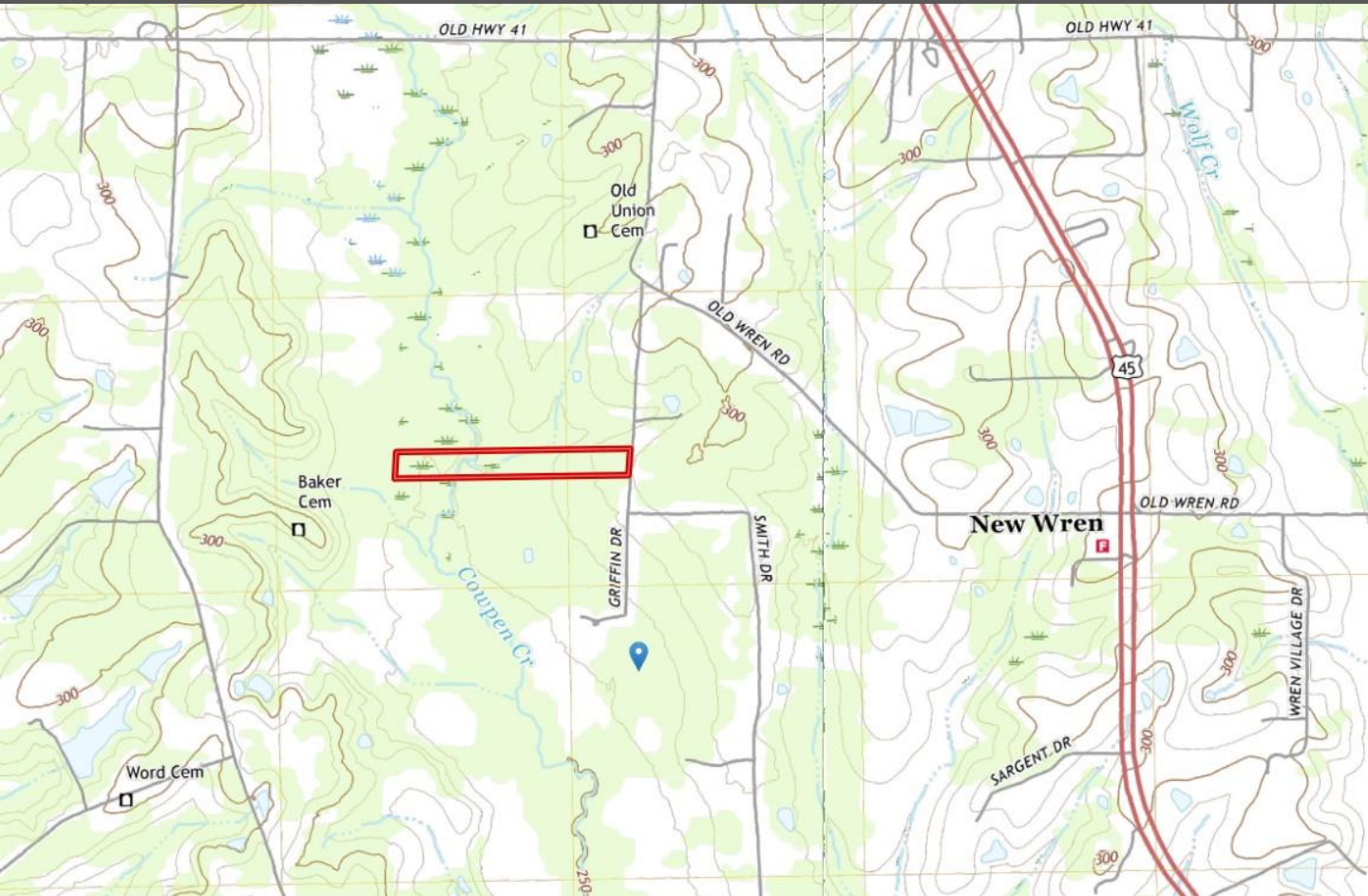
**WALKER TRANUM**, REALTOR®  
Walker@TomSmithHomes.com  
662.268.6333 office | 662.769.1442 cell



**TomSmithLandandHomes.com**

Information is believed to be accurate but not guaranteed.

# Topography Map



*Call me today!*

**WALKER TRANUM, REALTOR®**  
Walker@TomSmithHomes.com  
662.268.6333 office | 662.769.1442 cell

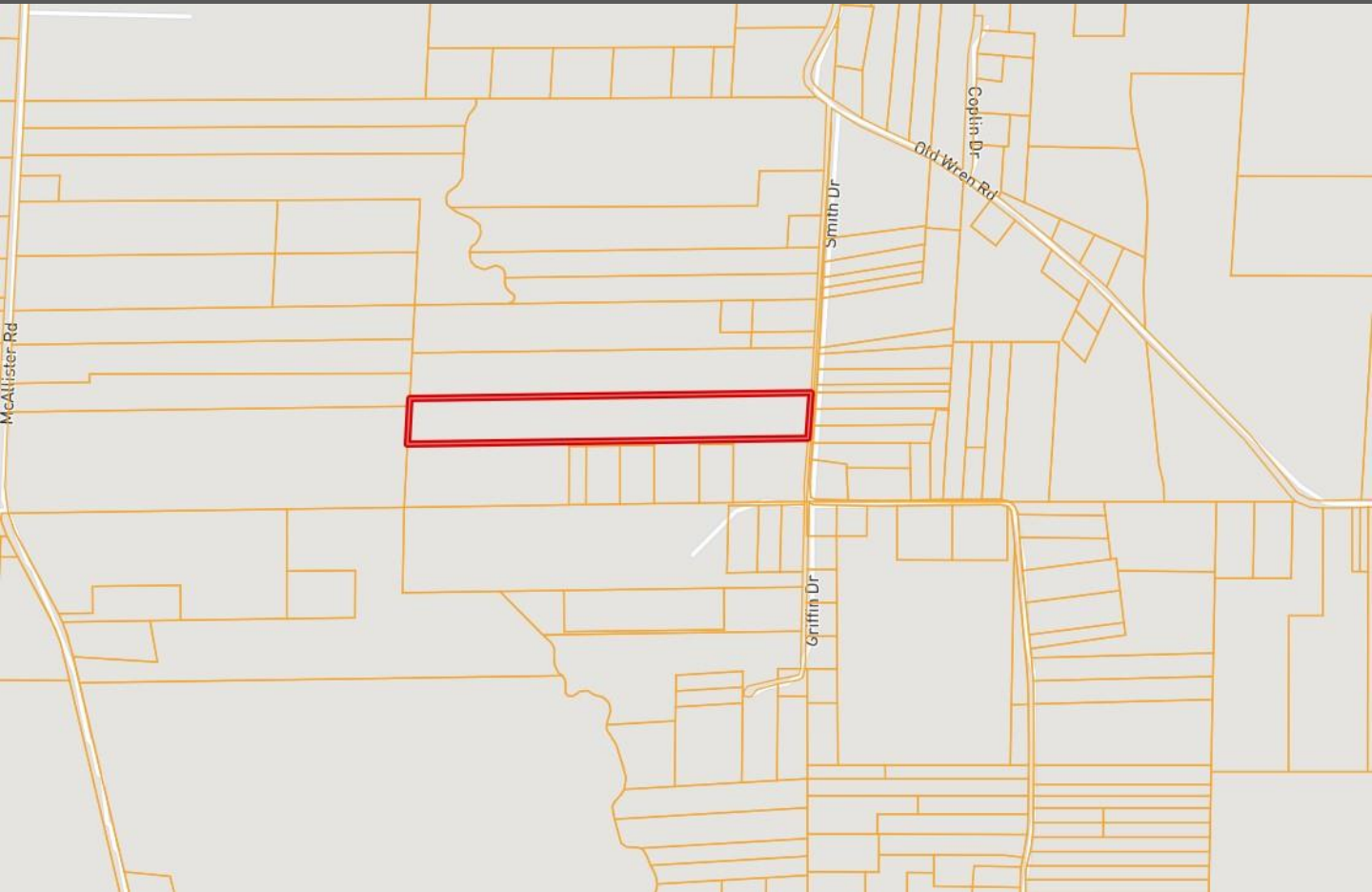


**TomSmithLandandHomes.com**

Information is believed to be accurate but not guaranteed.



# Ownership Map



*Call me today!*

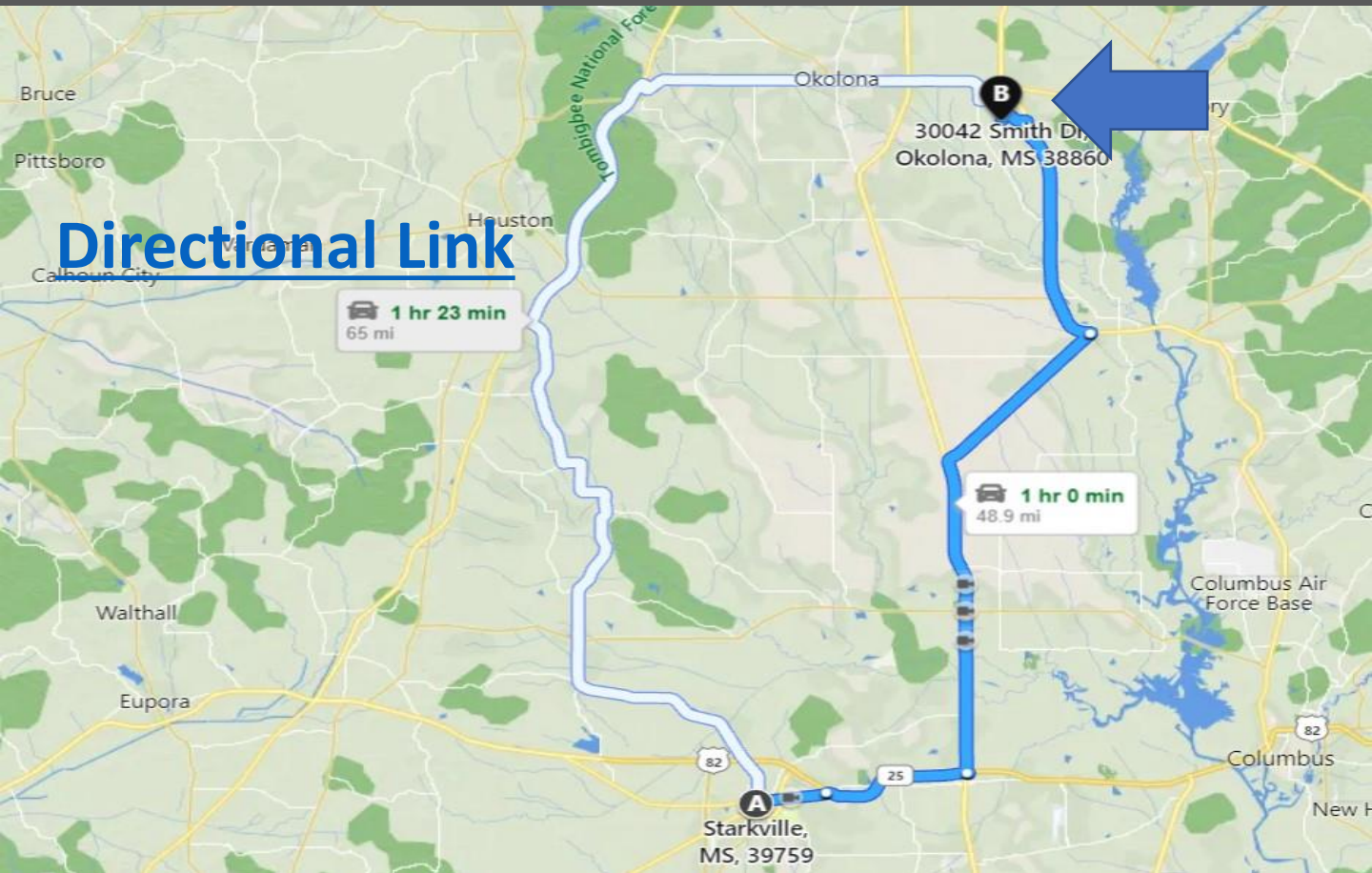
**WALKER TRANUM**, REALTOR®  
Walker@TomSmithHomes.com  
662.268.6333 office | 662.769.1442 cell



**TomSmithLandandHomes.com**

Information is believed to be accurate but not guaranteed.

# Directional Map



## Directional Link

1 hr 23 min  
65 mi

1 hr 0 min  
48.9 mi

**Directions from Mississippi Eyewear, Starkville, MS:** Head east on East Main Street toward North Lafayette Street for 194 feet. Then turn left onto North Lafayette Street in .1 miles. Then in 3 miles turn right onto MS-182 / Dr. Martin Luther King Jr Drive East. Then in 6.6 miles take the ramp on the right for US-82 E / MS-12 E / MS-25 N. Then in 16.2 miles take the ramp on the right for MS-25 North/ US-45A North and head toward Tupelo/ West Point. Then in 9.2 miles turn left onto US-45 S/ Highway 45 North. After that turn left in 12 miles onto Old Wren Road. Then in 1.2 miles turn left onto Smith Drive. The property will be on your right in .5 miles.



*Call me today!*

**WALKER TRANUM**, REALTOR®  
Walker@TomSmithHomes.com  
662.268.6333 office | 662.769.1442 cell



**TomSmithLandandHomes.com**

Information is believed to be accurate but not guaranteed.