

# 59+/-Acre Recreational Tract Madison County, MS

# \$1,386,500



- Minutes from Madison, MS
- 59± Acres of Recreational Land
- Great for Horses
- Live Flowing Creek
- Perimeter Fencing
- Potential Homesites
- Great for Livestock and Hunting
- Sought after Robinson Springs Rd

**Directions I-20 and Main Street in Madison, MS:** Travel North on Main Street and continue Hwy 463/New Mannsdale Rd. for 2.3 miles, turn left onto Robinson Springs Road. After 4.9 miles the property will be on your left. [GOOGLE MAP LINK](#)



**DAVID BELDEN**, REALTOR®  
DBelden@TomSmithLand.com  
601.898.2772 office | 601.415.3884 cell



Expect More. Get More.

*Call us today!*



**PETE PRISOCK**, ASSOCIATE BROKER  
Pete@TomSmithHomes.com  
601.898.2772 office | 601.291.5863 cell

# TomSmithLandandHomes.com

Information is believed to be accurate but not guaranteed.





Have you been searching for a peaceful place out in the country? Look no further than this 59± acre recreational tract in Madison County, MS, conveniently located approximately 10 minutes north of Madison off Robinson Springs Rd. The pasture is fenced and set up to move and rotate your livestock easily. This portion offers rolling terrain with gorgeous hardwood timber. As you navigate down the landscape, you transition into hardwoods and a flowing creek. This property is an excellent recreational tract and an additional water source for wildlife. The timber on the west boundary consists more of flat bottomland, adding to the diversity of the property makeup. There are multiple uses for this Madison County tract: potential homes or campsites that offer seclusion, recreational opportunities to chase after deer and turkey, or the turn-key availability to hold your livestock. Properties with a combination of timber and pasture can be hard to find. Be sure to take a look at all this place has to offer! Power and water run along the road. Call David Belden or Pete Prisock today for more details!



Expect More. Get More.

*Call us today!*

**DAVID BELDEN**, REALTOR®  
DBelden@TomSmithLand.com  
601.898.2772 office | 601.415.3884 cell

**PETE PRISOCK**, ASSOCIATE BROKER  
Pete@TomSmithHomes.com  
601.898.2772 office | 601.291.5863 cell

**TomSmithLandandHomes.com**

Information is believed to be accurate but not guaranteed.





Expect More. Get More.

Call us today!

DAVID BELDEN, REALTOR®  
DBelden@TomSmithLand.com  
601.898.2772 office | 601.415.3884 cell

PETE PRISOCK, ASSOCIATE BROKER  
Pete@TomSmithHomes.com  
601.898.2772 office | 601.291.5863 cell

TomSmithLandandHomes.com

Information is believed to be accurate but not guaranteed.





Expect More. Get More.

Call us today!

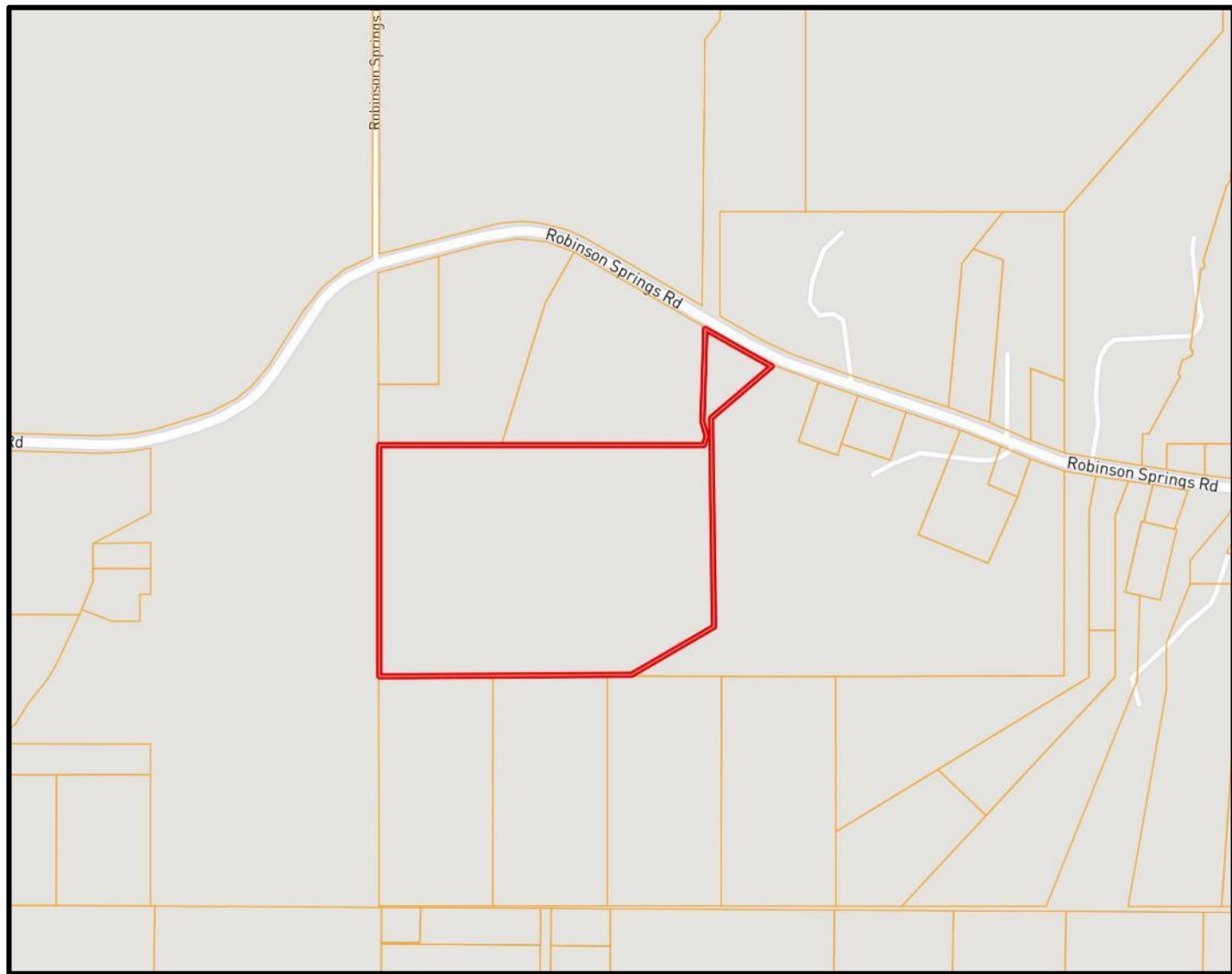
DAVID BELDEN, REALTOR®  
DBelden@TomSmithLand.com  
601.898.2772 office | 601.415.3884 cell

PETE PRISOCK, ASSOCIATE BROKER  
Pete@TomSmithHomes.com  
601.898.2772 office | 601.291.5863 cell

TomSmithLandandHomes.com

Information is believed to be accurate but not guaranteed.





## OWNERSHIP MAP

[CLICK HERE FOR AN INTERACTIVE MAP](#)



Expect More. Get More.

*Call us today!*

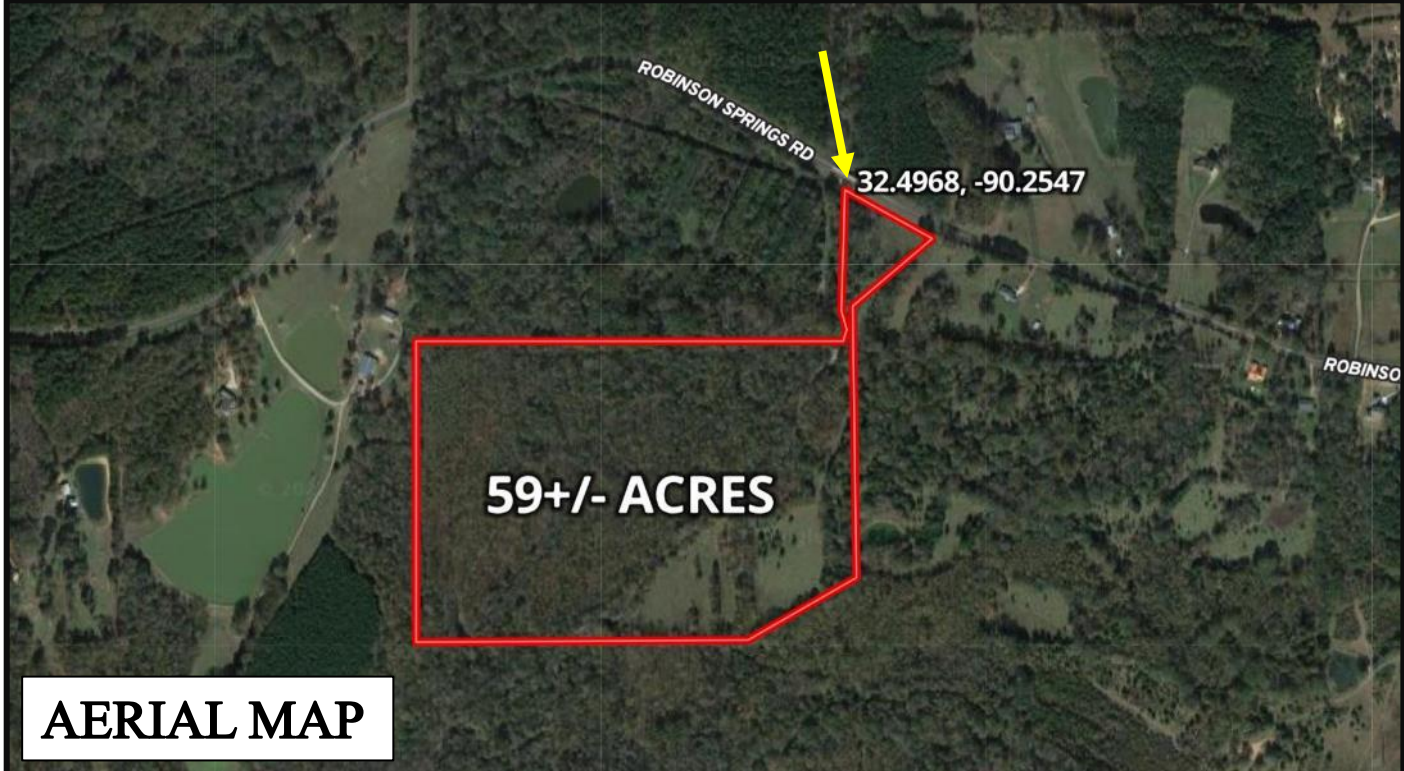
**DAVID BELDEN**, REALTOR®  
DBelden@TomSmithLand.com  
601.898.2772 office | 601.415.3884 cell

**PETE PRISOCK**, ASSOCIATE BROKER  
Pete@TomSmithHomes.com  
601.898.2772 office | 601.291.5863 cell

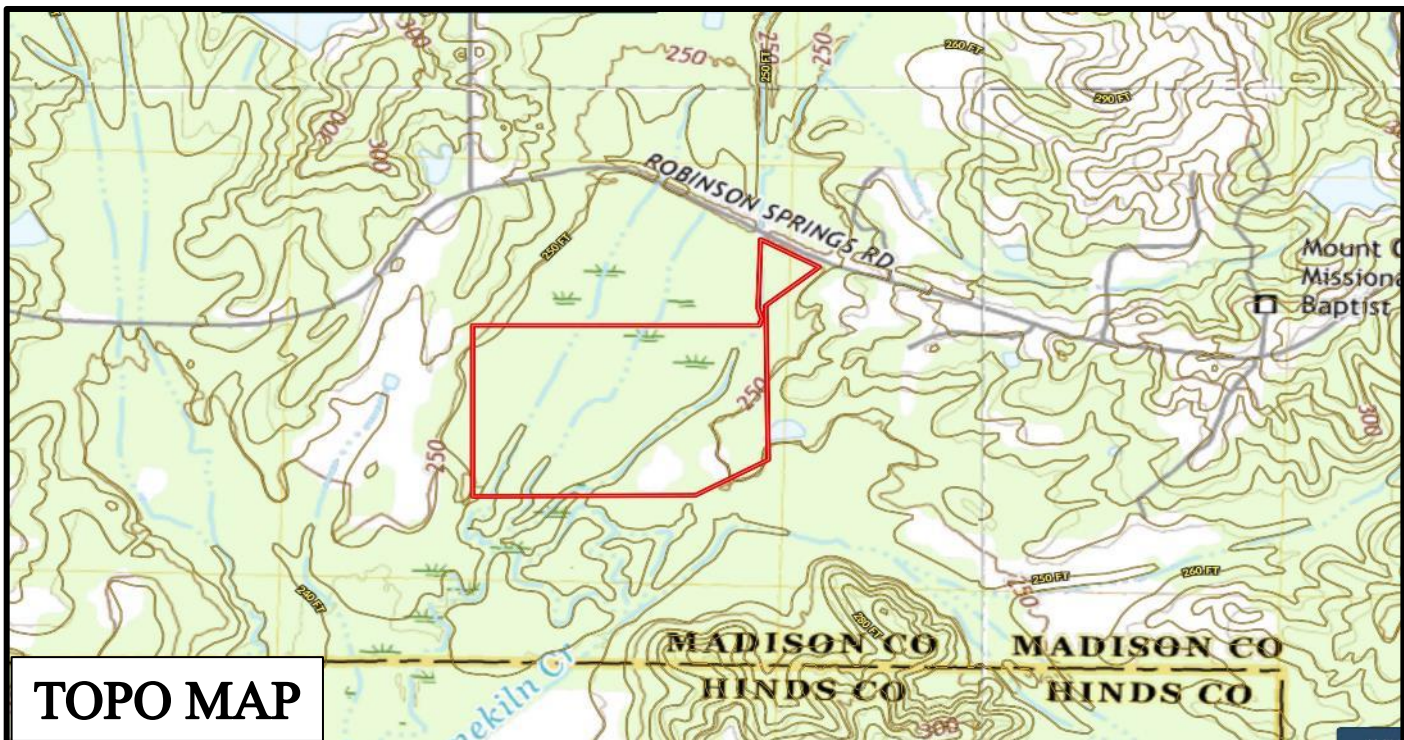
**TomSmithLandandHomes.com**

Information is believed to be accurate but not guaranteed.





**AERIAL MAP**



**TOPO MAP**



Expect More. Get More.

*Call us today!*

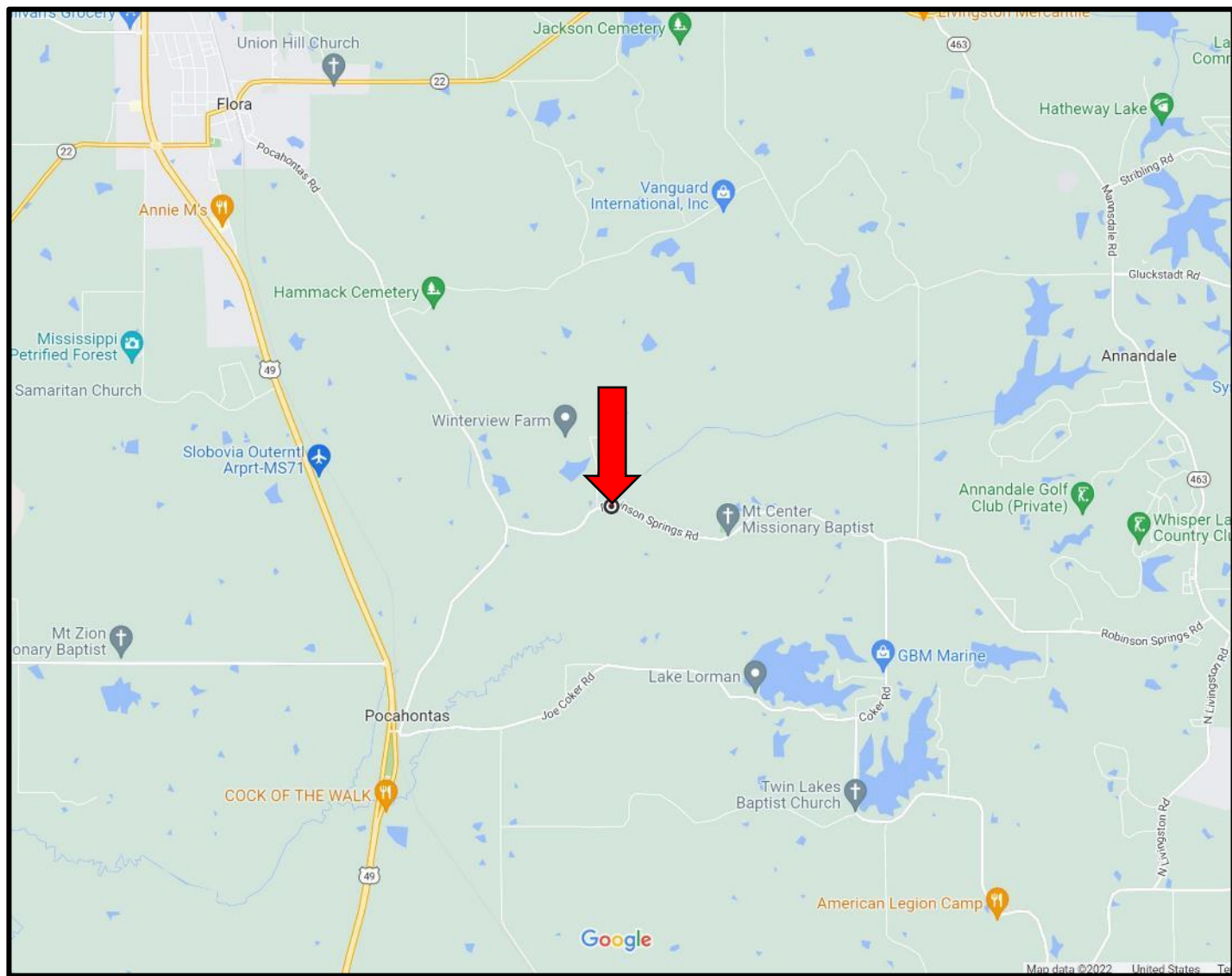
**DAVID BELDEN**, REALTOR®  
DBelden@TomSmithLand.com  
601.898.2772 office | 601.415.3884 cell

**PETE PRISOCK**, ASSOCIATE BROKER  
Pete@TomSmithHomes.com  
601.898.2772 office | 601.291.5863 cell

**TomSmithLandandHomes.com**

Information is believed to be accurate but not guaranteed.





**DIRECTIONAL MAP**

**Directions I-20 and Main Street in Madison, MS:** Travel North on Main Street and continue Hwy 463/New Mannsdale Rd. for 2.3 miles, turn left onto Robinson Springs Road. After 4.9 miles the property will be on your left. [GOOGLE MAP LINK](#)



**DAVID BELDEN, REALTOR**  
 DBelden@TomSmithLand.com  
 601.898.2772 office | 601.415.3884 cell



Expect More. Get More.

*Call us today!*



**PETE PRISOCK, ASSOCIATE BROKER**  
 Pete@TomSmithHomes.com  
 601.898.2772 office | 601.291.5863 cell

**TomSmithLandandHomes.com**

Information is believed to be accurate but not guaranteed.

