

# Great Starter Home Coahoma County, MS



**\$80,000**

## 124 Old Road Lyon, MS

Great three bedroom, two bath house located in the lovely neighborhood of Lyon, Coahoma County, MS. Located on the corner of Old Road and Fontaine Street this 2,116 sq.ft. home has lots of potential. It would make the perfect starter home or nice investment property. The home features built-in shelving in the dining room, large front porch, and the original hardwood floors are in good condition! 124 Old Road is conveniently located just a few miles from downtown Clarksdale, MS. Call Anthony to schedule a showing today!

Directions from MS-6 W and MS-161 N in Clarksdale, MS: Head southwest toward MS- 6 W for .4 of a mile. Turn right onto MS- 161 N continuing on for .6 of a mile. Turn left onto Hopson Street for .4 of a mile. Turn left onto Old Road and the destination will be on your left in 289 feet.



2011-2022  
BEST  
BROKERAGES

*Call me  
today!*

**ANTHONY STEEN, REALTOR®**  
Anthony@TomSmithLand.com  
662.441.2500 office | 662.645.5151 cell



**TomSmithLandandHomes.com**

Information is believed to be accurate but not guaranteed.



*Call me today!*

**ANTHONY STEEN**, REALTOR®  
Anthony@TomSmithLand.com  
662.441.2500 office | 662.645.5151 cell



**TomSmithLandandHomes.com**

Information is believed to be accurate but not guaranteed.



*Call me today!*

**ANTHONY STEEN, REALTOR®**  
Anthony@TomSmithLand.com  
662.441.2500 office | 662.645.5151 cell



**TomSmithLandandHomes.com**

Information is believed to be accurate but not guaranteed.



*Call me today!*

**ANTHONY STEEN**, REALTOR®  
Anthony@TomSmithLand.com  
662.441.2500 office | 662.645.5151 cell



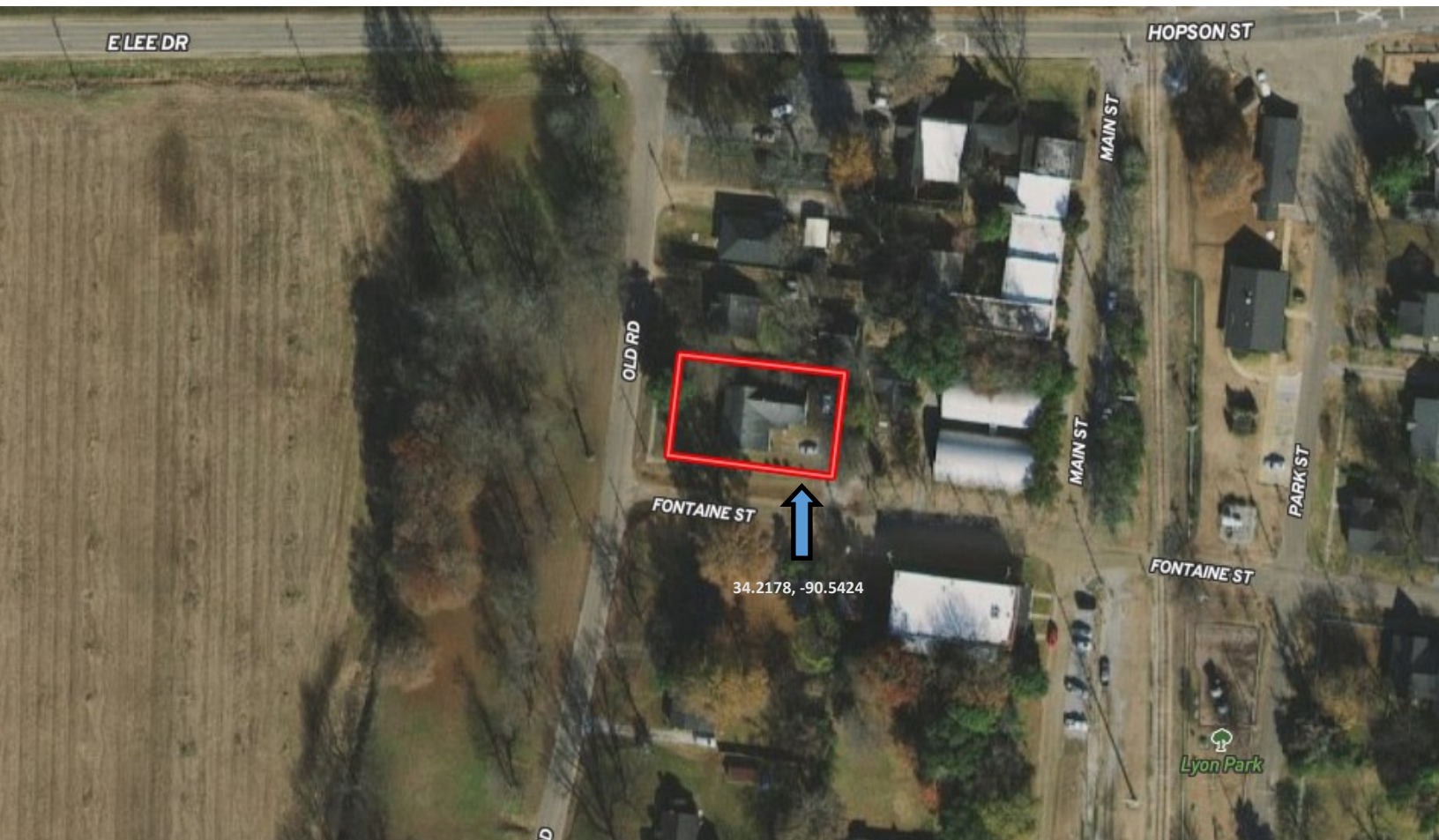
Expect More. Get More.



**TomSmithLandandHomes.com**

Information is believed to be accurate but not guaranteed.

# Aerial Map



[Click to view interactive map](#)

*Call me today!*

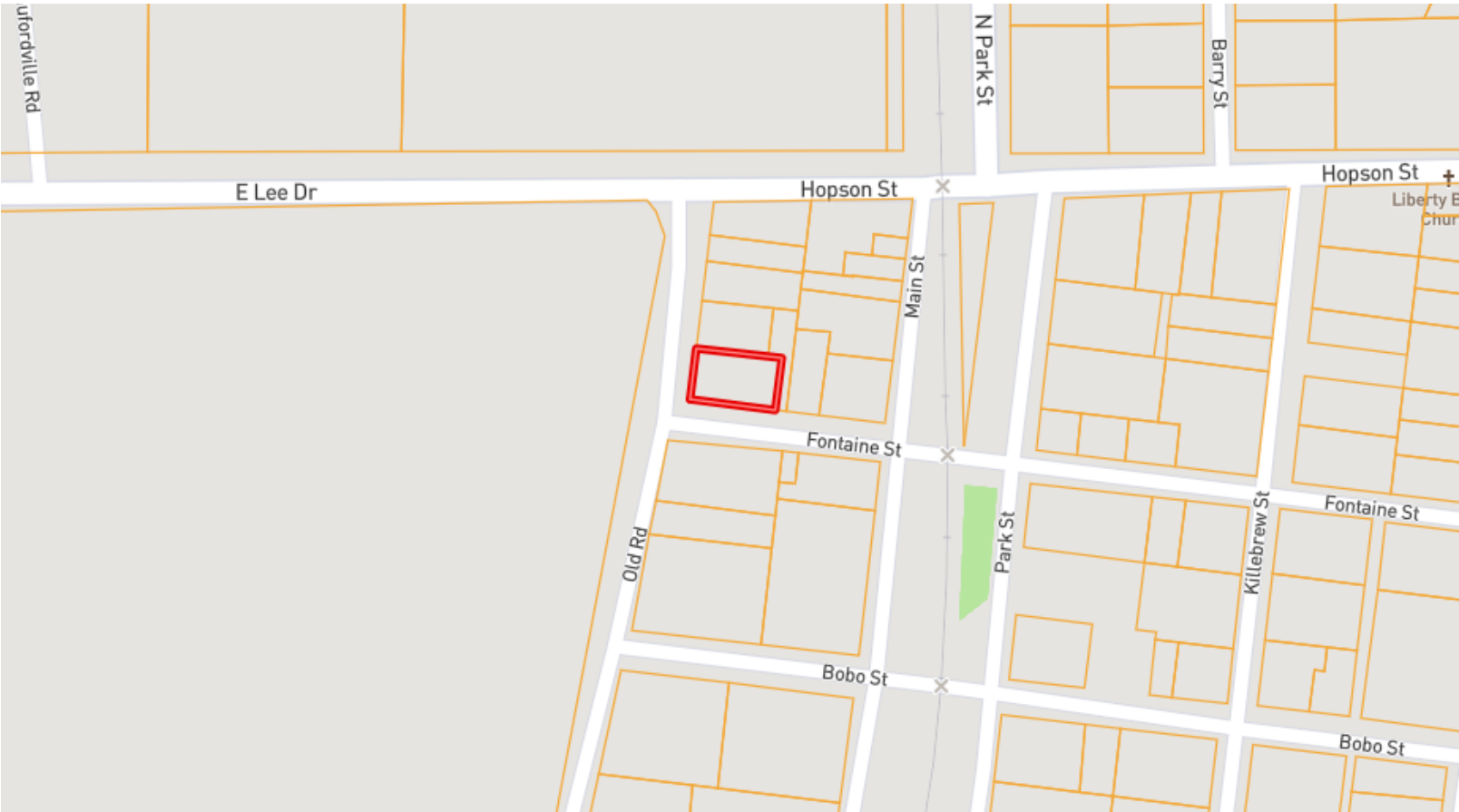
**ANTHONY STEEN**, REALTOR®  
Anthony@TomSmithLand.com  
662.441.2500 office | 662.645.5151 cell



**TomSmithLandandHomes.com**

Information is believed to be accurate but not guaranteed.

# Ownership Map



[Click to view interactive map](#)

*Call me today!*

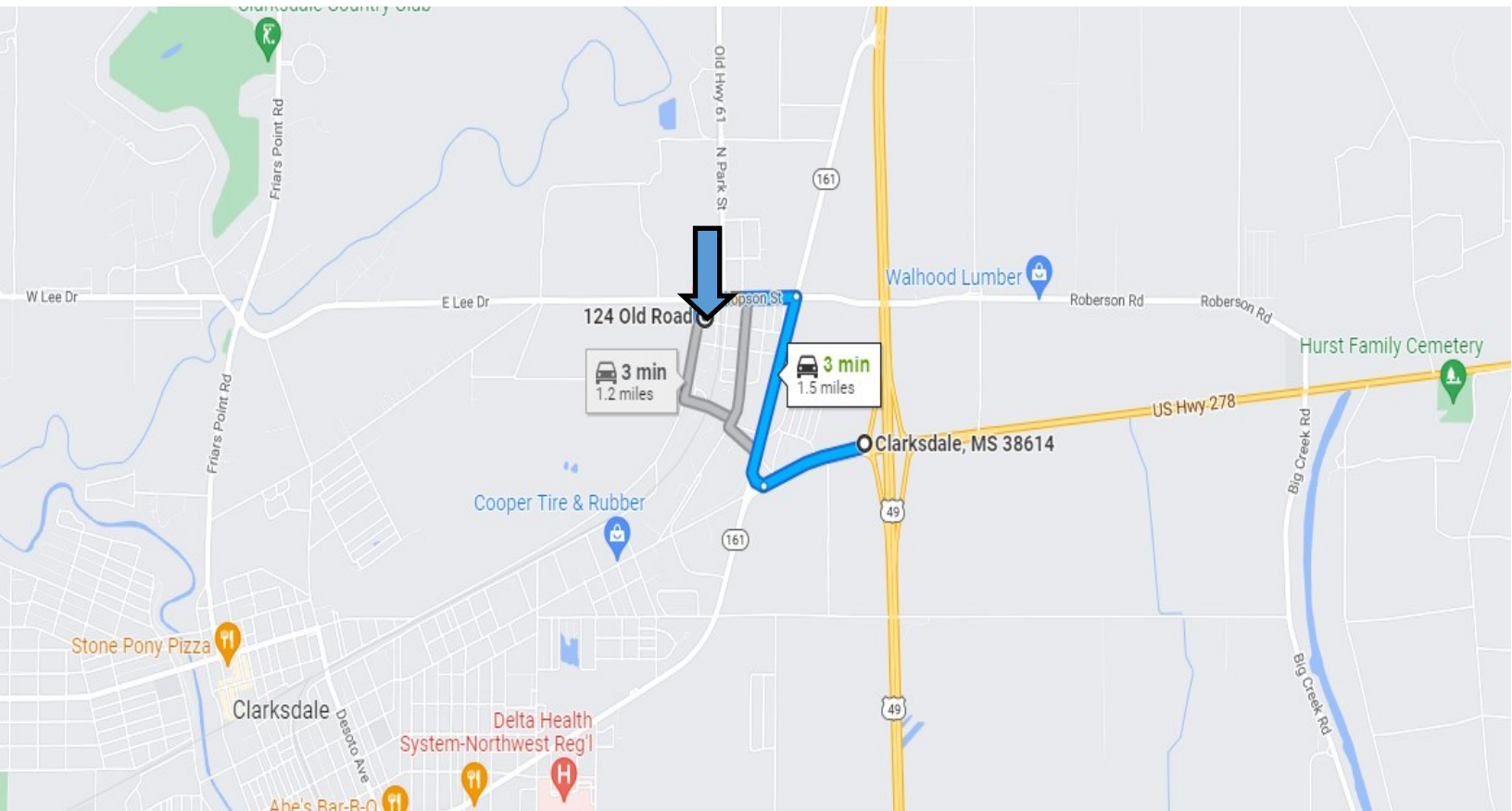
**ANTHONY STEEN**, REALTOR®  
Anthony@TomSmithLand.com  
662.441.2500 office | 662.645.5151 cell



**TomSmithLandandHomes.com**

Information is believed to be accurate but not guaranteed.

# Google Map



Directions from MS-6 W and MS-161 N in Clarksdale, MS: Head southwest toward MS- 6 W for .4 of a mile. Turn right onto MS- 161 N continuing on for .6 of a mile. Turn left onto Hopson Street for .4 of a mile. Turn left onto Old Road and the destination will be on your left in 289 feet.

## [Google Map Directions](#)

*Call me today!*

**ANTHONY STEEN**, REALTOR<sup>®</sup>  
Anthony@TomSmithLand.com  
662.441.2500 **office** | 662.645.5151 **cell**



**TomSmithLandandHomes.com**

Information is believed to be accurate but not guaranteed.