

Spacious House in Indianola Sunflower County, MS



\$225,000



106 East Augusta Street Indianola, MS 38751

This three-parcel lot measuring 190 x 210 sits in a perfect location in the middle of Indianola, Sunflower County, MS. This two story home is approximately 3,400 sq. ft. with five bedrooms, four and a half baths, a separate additional living quarters, and a large green space adjoining the main structure. Perfect for a large family with plenty of space. Call Emerson today for your private showing.

Directions from the intersection of Hwy 49 & Hwy 82 in Indianola, MS: Travel West on Highway 82 for 1.0 miles, turn left onto Catchings Ave. In 0.2 miles turn left at the 3rd cross street onto E. Augusta St. and in 358 ft the destination is on the right.



Call me today!

EMERSON LOVELACE, REALTOR®
Emerson@TomSmithLand.com
662.441.2500 office | 662.715.3302 cell



Expect More. Get More.

TomSmithLandandHomes.com

Information is believed to be accurate but not guaranteed.



Call me today!

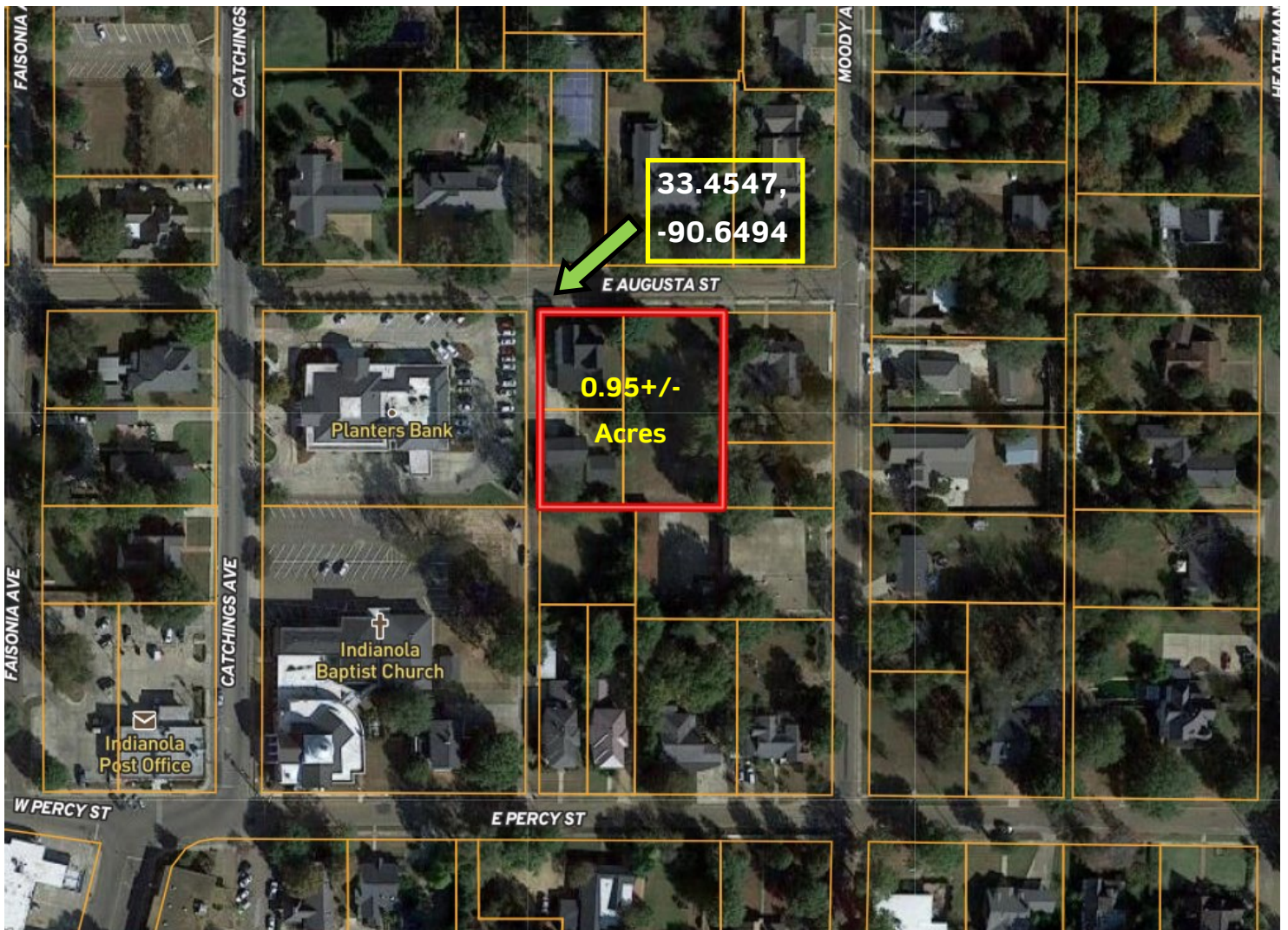
EMERSON LOVELACE, REALTOR®
Emerson@TomSmithLand.com
662.441.2500 **office** | 662.715.3302 **cell**



TomSmithLandandHomes.com

Information is believed to be accurate but not guaranteed.

AERIAL MAP



[Click for Interactive Map](#)

Call me today!

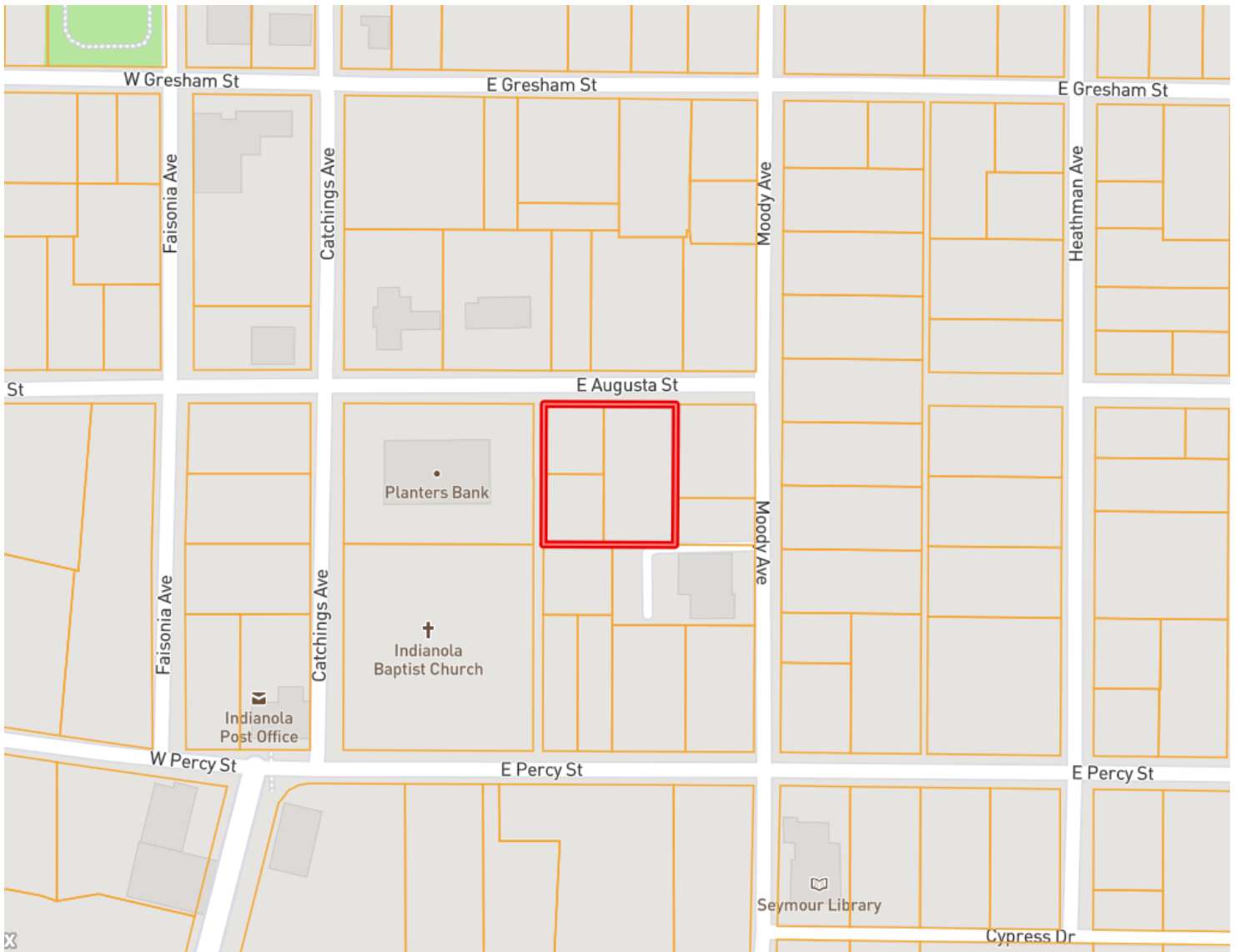
EMERSON LOVELACE, REALTOR®
Emerson@TomSmithLand.com
662.441.2500 **office** | 662.715.3302 **cell**



TomSmithLandandHomes.com

Information is believed to be accurate but not guaranteed.

OWNERSHIP MAP



Call me today!

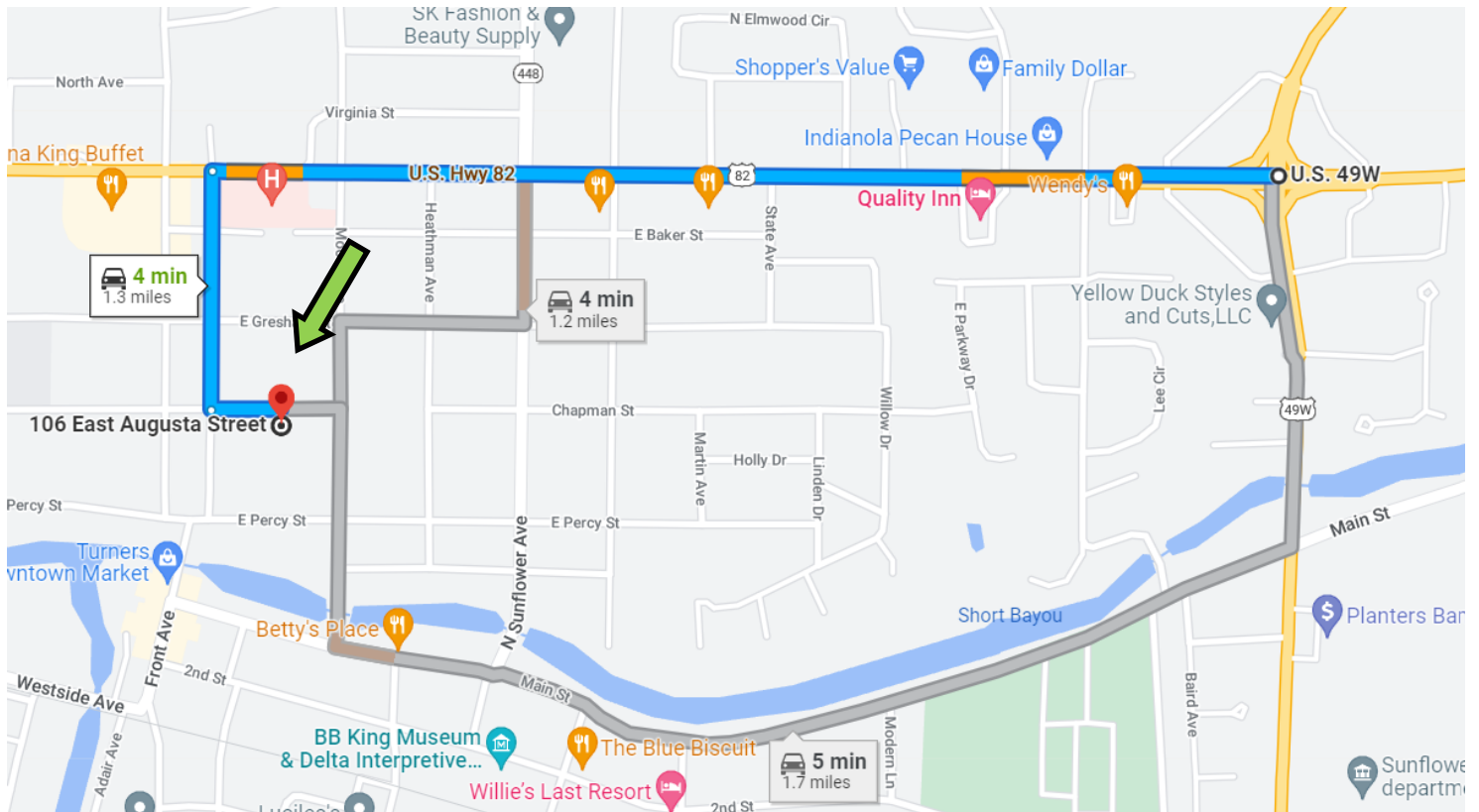
EMERSON LOVELACE, REALTOR®
Emerson@TomSmithLand.com
662.441.2500 **office** | 662.715.3302 **cell**



TomSmithLandandHomes.com

Information is believed to be accurate but not guaranteed.

DIRECTIONAL MAP



Address: 106 East Augusta St. Indianola, MS 38751

Directions from the intersection of Hwy 49 & Hwy 82 in Indianola, MS: Travel West on Highway 82 for approximately 1.0 miles, turn left onto Catchings Ave. In 0.2 miles turn left at the 3rd cross street onto E. Augusta St. and in 358 ft the destination is on the right. [Click for Google Map directions.](#)

Call me today!

EMERSON LOVELACE, REALTOR®
Emerson@TomSmithLand.com
662.441.2500 **office** | 662.715.3302 **cell**



TomSmithLandandHomes.com

Information is believed to be accurate but not guaranteed.