

Beautiful Gulfport, MS Home On 3+/- Acres

Harrison County, MS



- 1,280+/- Sq. Ft. heated and cooled living space
- 3 bedroom/ 2 bathroom
- Front and back porch
- Security lights
- Single car garage (Tuff Shed brand)
- Pump house that doubles as storage (Tuff Shed brand)
- Large fenced and gated area for pets
- Poured concrete walkways to the front and back porch
- New appliances everywhere
- Beautiful views



TARA SMITH, REALTOR®
Tara@TomSmithHomes.com
601.990.5070 office | 601.407.4315 cell



Call us today!



TRAVIS SMITH, REALTOR®
Travis@TomSmithLand.com
601.990.5070 office | 601.600.0428 cell

TomSmithLandandHomes.com

Information is believed to be accurate but not guaranteed.





Call me today!



TRAVIS SMITH, REALTOR®
Travis@TomSmithLand.com
601.898.2772 office | 601.600.0428 cell



Expect More. Get More.

TomSmithLandandHomes.com

Information is believed to be accurate but not guaranteed.



Call me today!

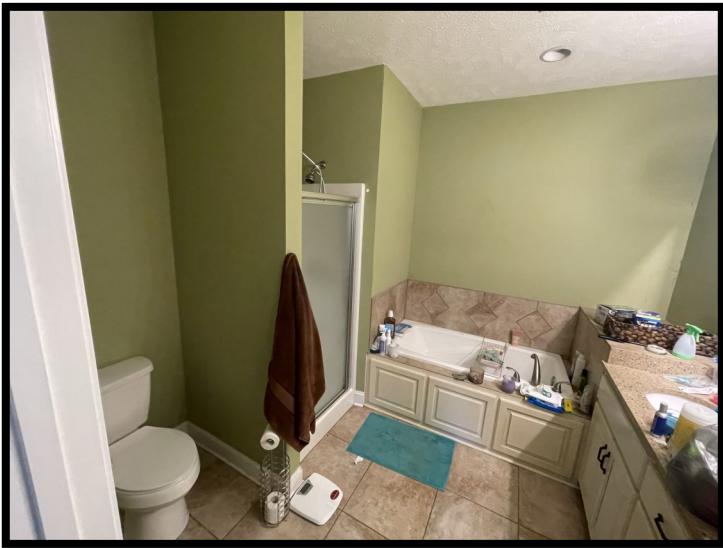


TRAVIS SMITH, REALTOR®
Travis@TomSmithLand.com
601.898.2772 office | 601.600.0428 cell



TomSmithLandandHomes.com

Information is believed to be accurate but not guaranteed.



TRAVIS SMITH, REALTOR®
Travis@TomSmithLand.com
601.898.2772 office | 601.600.0428 cell

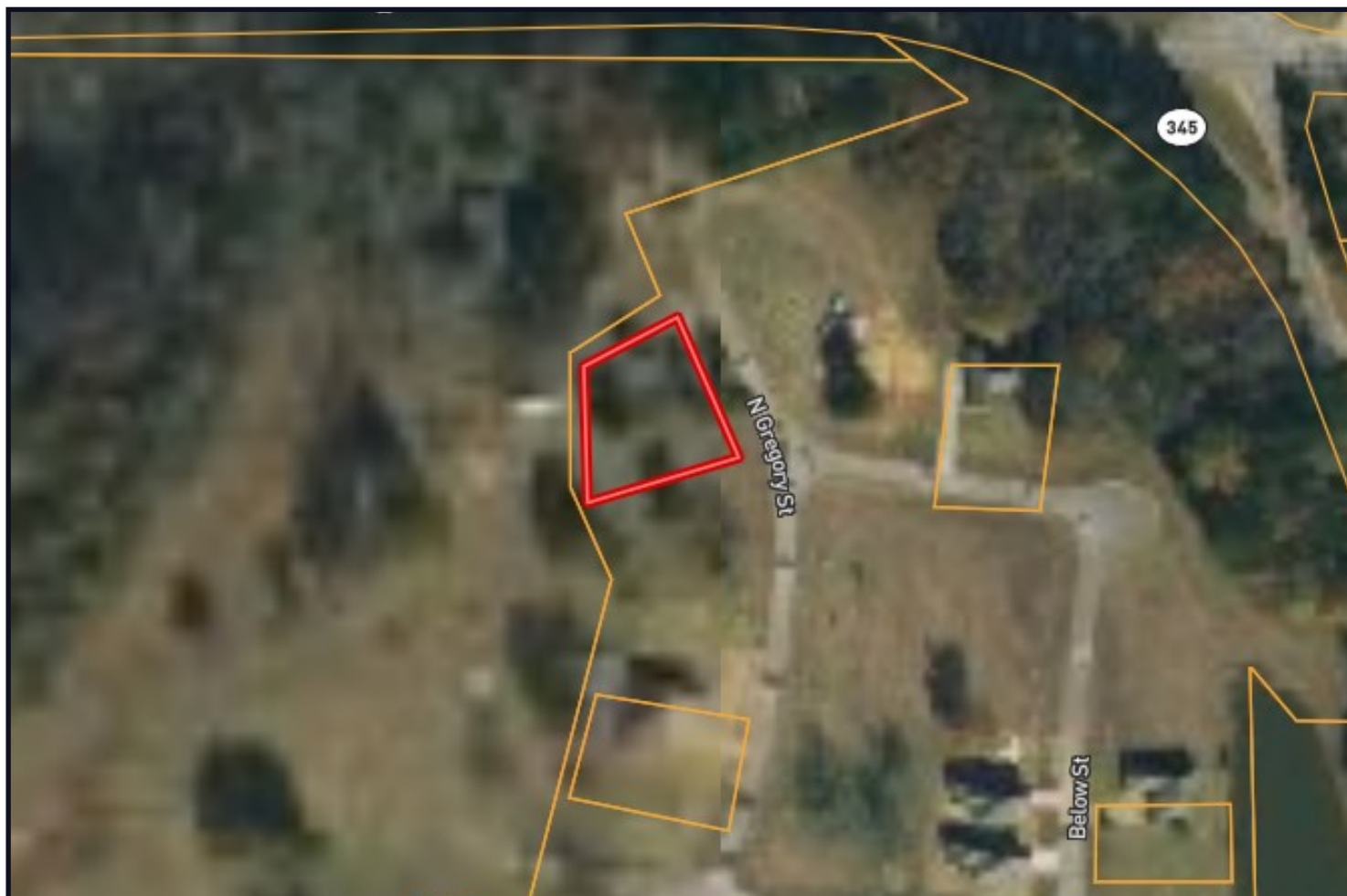


Expect More. Get More.

TomSmithLandandHomes.com

Information is believed to be accurate but not guaranteed.

AERIAL MAP



CLICK [HERE](#) FOR AN INTERACTIVE MAP

Call me today!

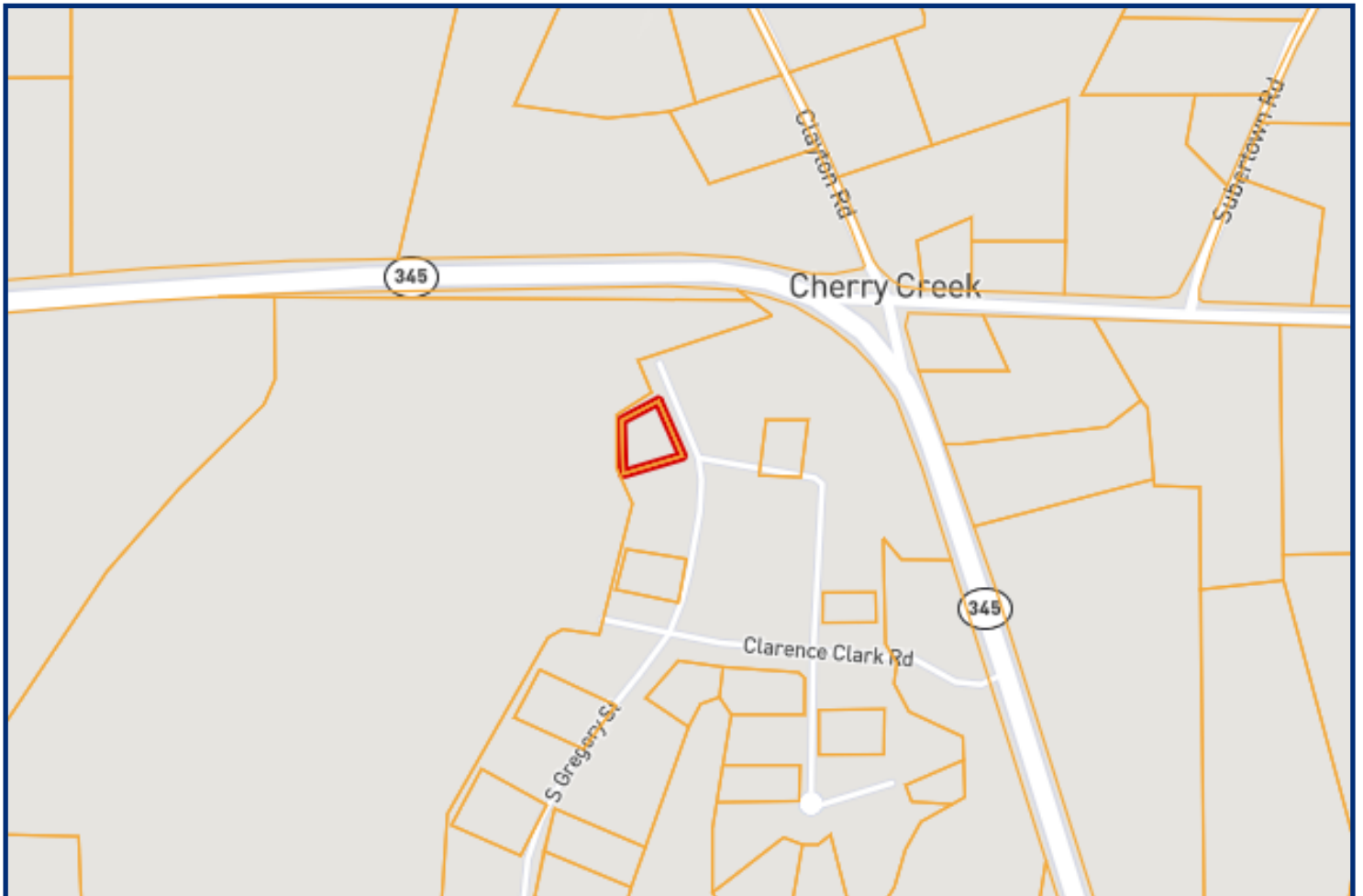
TRAVIS SMITH, REALTOR®
Travis@TomSmithLand.com
601.898.2772 office | 601.600.0428 cell



TomSmithLandandHomes.com

Information is believed to be accurate but not guaranteed.

OWNERSHIP MAP



Call me today!

TRAVIS SMITH, REALTOR®
Travis@TomSmithLand.com
601.898.2772 **office** | 601.600.0428 **cell**



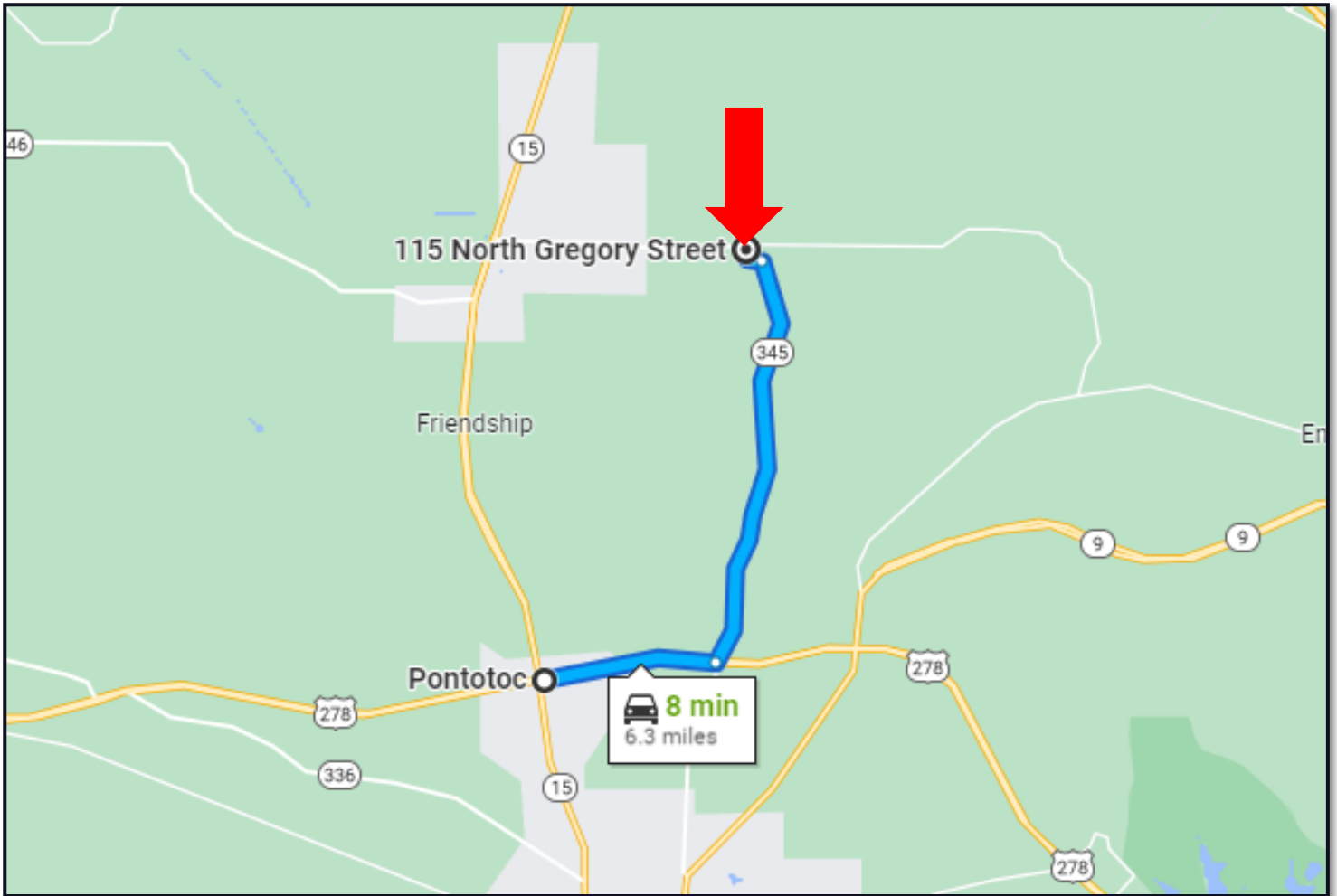
Expect More. Get More.



TomSmithLandandHomes.com

Information is believed to be accurate but not guaranteed.

DIRECTIONAL MAP



DIRECTIONS FROM FOUR WAY STOP OF HWY 278 AND HWY 15 IN PONTOTOC, MS:

Head east on US-278 E/Pontotoc Pkwy W for 1.8 miles then turn left onto MS-345 N for 4.2 miles. Turn left onto Clarence Creek Dr for 0.2 miles. Take a right onto N Gregory St and the destination is 0.1 miles on the left. Address: 115 N Gregory St Ecu, MS

[GOOGLE MAP LINK](#)



Call me today!

TRAVIS SMITH, REALTOR®

Travis@TomSmithLand.com

601.898.2772 office | 601.600.0428 cell



Expect More. Get More.

TomSmithLandandHomes.com

Information is believed to be accurate but not guaranteed.