

Cute Cottage w/ Guest House

Bolivar County, MS



1287 Memorial Drive Cleveland, MS 38732

\$225,000

Take a look at this cute cottage located in Cleveland, Bolivar County, MS. This 1763+/- sq ft home features three bedrooms and one and a half baths. The kitchen and bathrooms have been completely remodeled. The original hardwood floors are in immaculate shape. There is a gas fireplace to cozy up to on those cold days, and the front screened porch is perfect for those summer days. The lot is huge, making it perfect for outdoor entertainment or a room for a shop. The 515+/- sq ft guest house has one bedroom and one bathroom and is currently rented for \$700 a month. Call Tracey today for your private showing!

Directions from the intersection of Hwy 61 and Hwy 8 in Cleveland, MS: Travel west on Hwy 8 approximately 0.6 miles. Turn left onto North Leflore Ave and in 1.0 it turns into Memorial Drive. In 0.4 miles the destination is on the right.



Call me today!

TRACEY BELL, MANAGING BROKER
Tracey@TomSmithLand.com
662.441.2500 **office** | 662.719.4720 **cell**



Expect More. Get More.

TomSmithLandandHomes.com

Information is believed to be accurate but not guaranteed.



Call me today!

TRACEY BELL, MANAGING BROKER
 Tracey@TomSmithLand.com
 662.441.2500 **office** | 662.719.4720 **cell**



TomSmithLandandHomes.com

Information is believed to be accurate but not guaranteed.



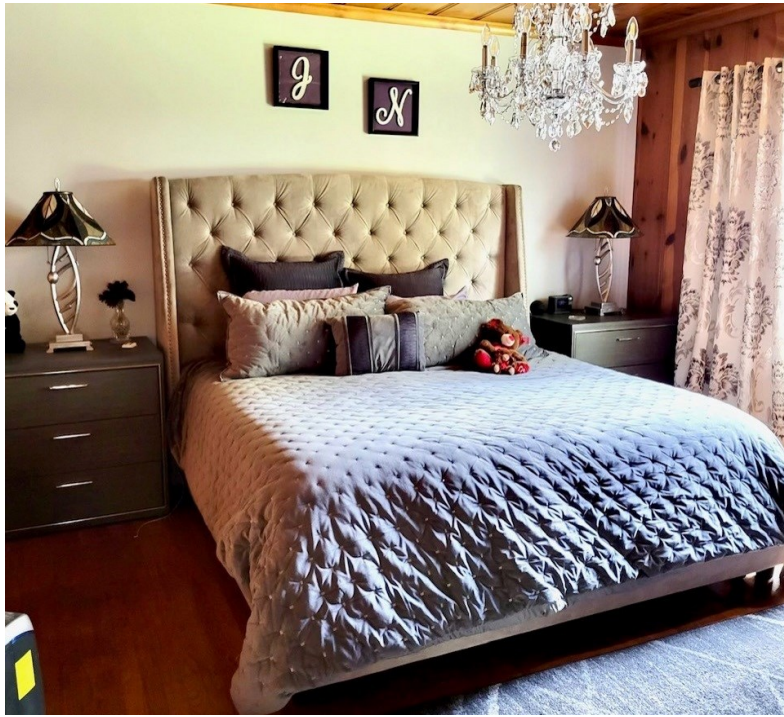
Call me today!

TRACEY BELL, MANAGING BROKER
 Tracey@TomSmithLand.com
 662.441.2500 **office** | 662.719.4720 **cell**



TomSmithLandandHomes.com

Information is believed to be accurate but not guaranteed.



Call me today!

TRACEY BELL, MANAGING BROKER

Tracey@TomSmithLand.com

662.441.2500 **office** | 662.719.4720 **cell**



Expect More. Get More.

TomSmithLandandHomes.com

Information is believed to be accurate but not guaranteed.



Call me today!

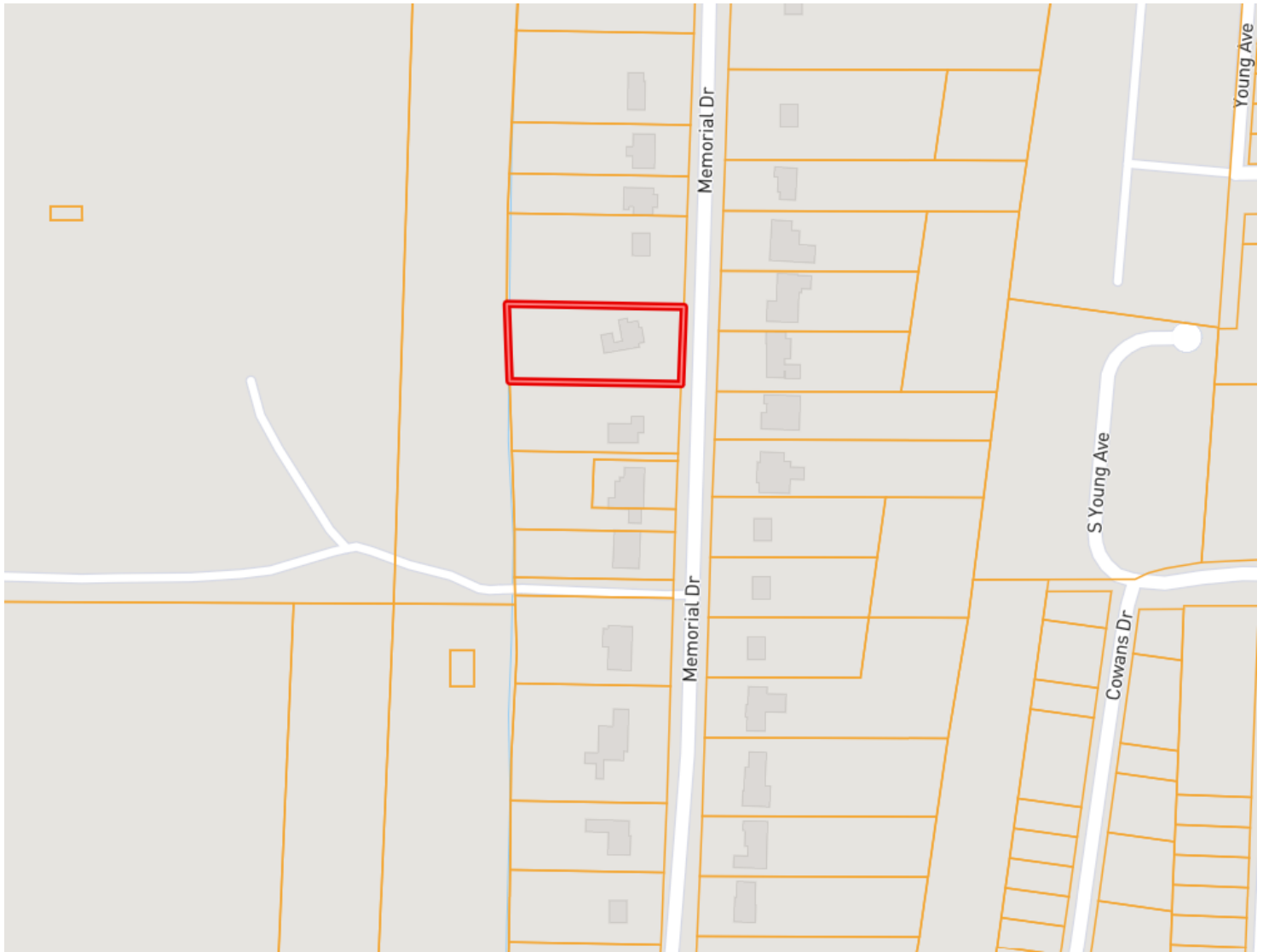
TRACEY BELL, MANAGING BROKER
 Tracey@TomSmithLand.com
 662.441.2500 **office** | 662.719.4720 **cell**



TomSmithLandandHomes.com

Information is believed to be accurate but not guaranteed.

OWNERSHIP MAP



Call me today!

TRACEY BELL, MANAGING BROKER
Tracey@TomSmithLand.com
662.441.2500 **office** | 662.719.4720 **cell**



TomSmithLandandHomes.com

Information is believed to be accurate but not guaranteed.

AERIAL MAP



[Click for Interactive Map](#)

Call me today!

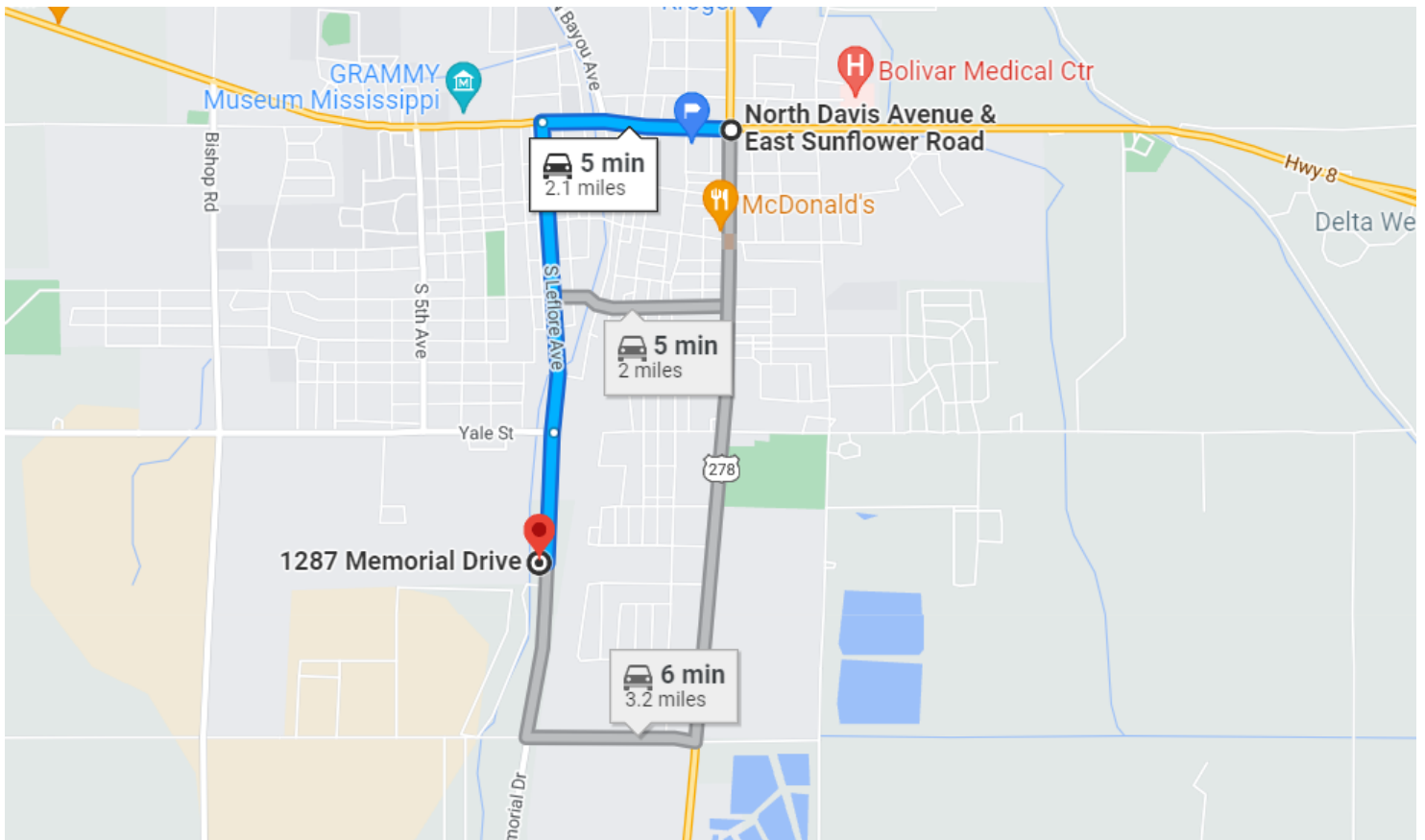
TRACEY BELL, MANAGING BROKER
Tracey@TomSmithLand.com
662.441.2500 **office** | 662.719.4720 **cell**



TomSmithLandandHomes.com

Information is believed to be accurate but not guaranteed.

DIRECTIONAL MAP



Address: 1287 Memorial Drive Cleveland, MS 38732

Directions from the intersection of Hwy 61 and Hwy 8 in Cleveland, MS: Travel west on HWY 8 for approximately 0.6 miles. Turn left onto North Leflore Ave and in 1.0 it turns into Memorial Drive. In 0.4 miles the destination is on the right. [Click for Google Maps.](#)

Call me today!

TRACEY BELL, MANAGING BROKER
Tracey@TomSmithLand.com
662.441.2500 **office** | 662.719.4720 **cell**



TomSmithLandandHomes.com

Information is believed to be accurate but not guaranteed.