

# 120 Acre Recreation/Timber Tract Oktober County, MS



\$4,125 per  
Acre

120 +/- acre property located approximately 25 minutes Northwest of Starkville, MS., approximately ½ mile North of MS Hwy 82 off Harpole road near the Center Grove community. The property is primarily Pine Chip & Saw timber which has been thinned once. No hardwoods were cut during the thinning leaving excellent Deer and Turkey hunting potential. Logging road were graded after logging was complete. Utilities are located on Harpole road. Call Doyes for your personal tour.

**Directions from Hwy 82 and 25 intersection in Starkville, MS:** Travel West on MS 82 for approximately 12 miles, turn right on Harpole road, then North for approximately ½ mile, tract will be on left of gravel road.



**DOYES  
HOLLAND**  
REALTOR®

Office: 662.268.6333

Cell: 662.312.2165

DHolland@TomSmithLand.com



**A Real Estate Expert You Can Trust**

TomSmithLandandHomes.com

Information is believed to be accurate but not guaranteed.







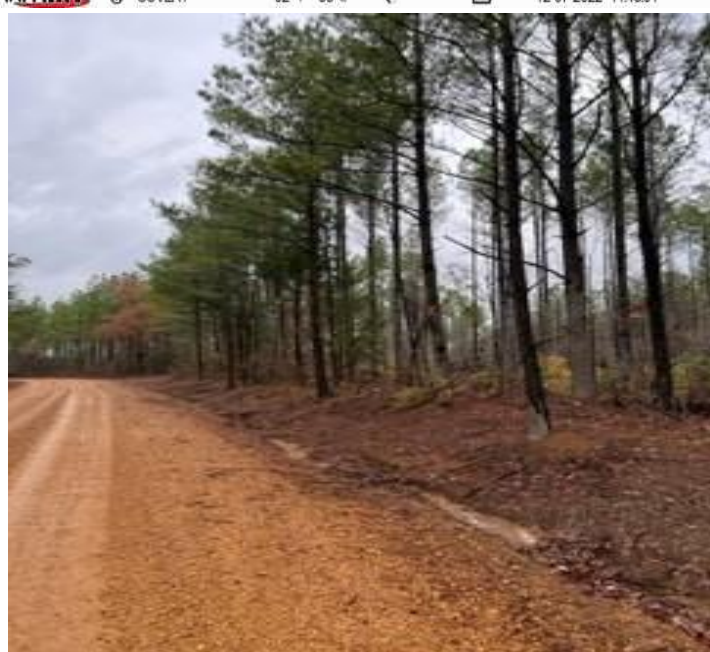
COVERT COVERT 69 °F 20 °C 12-06-2022 18:42:57



COVERT COVERT 92 °F 33 °C 12-07-2022 11:43:01



COVERT



DOYES  
**HOLLAND**  
REALTOR®

Office: 662.268.6333

Cell: 662.312.2165

DHolland@TomSmithLand.com



Expect More. Get More.

A Real Estate Expert You Can Trust

TomSmithLandandHomes.com

LikeReport  
2011-2024  
BEST





**DOYES  
HOLLAND**  
REALTOR®

Office: 662.268.6333  
Cell: 662.312.2165  
DHolland@TomSmithLand.com



Expect More. Get More.

**A Real Estate Expert You Can Trust**

TomSmithLandandHomes.com

Information is believed to be accurate but not guaranteed.







**DOYES  
HOLLAND**  
REALTOR®

Office: 662.268.6333

Cell: 662.312.2165

DHolland@TomSmithLand.com



Expect More. Get More.

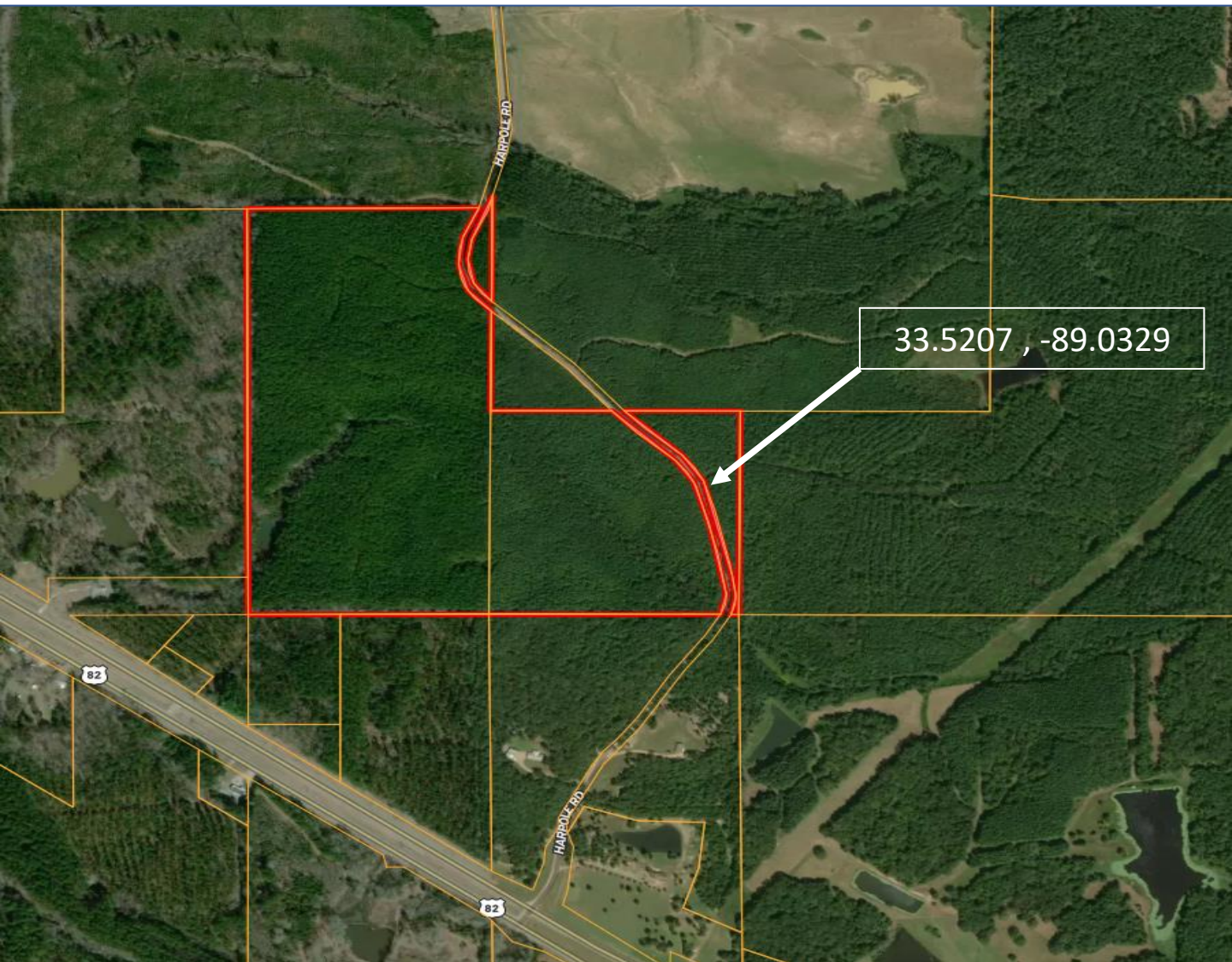
**A Real Estate Expert You Can Trust**

TomSmithLandandHomes.com

2011-2024  
BEST



# Aerial Map



[Click for Interactive map](#)



**DOYES  
HOLLAND**  
REALTOR®

Office: 662.268.6333

Cell: 662.312.2165

DHolland@TomSmithLand.com



Expect More. Get More.

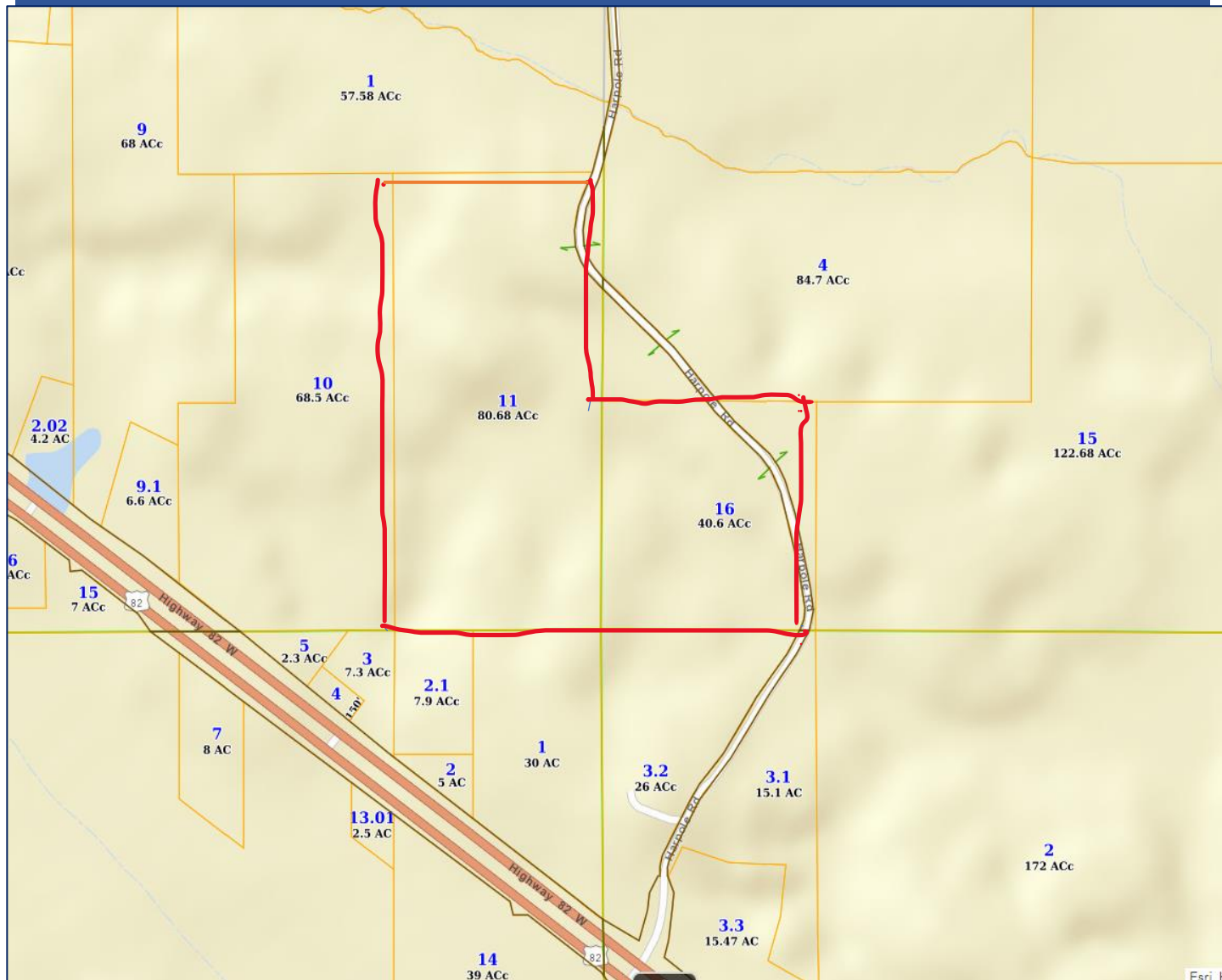
**A Real Estate Expert You Can Trust**

TomSmithLandandHomes.com

Information is believed to be accurate but not guaranteed.



# Ownership Map



**DOYES  
HOLLAND**  
REALTOR®

Office: 662.268.6333

Cell: 662.312.2165

DHolland@TomSmithLand.com



Expect More. Get More.

**A Real Estate Expert You Can Trust**

TomSmithLandandHomes.com

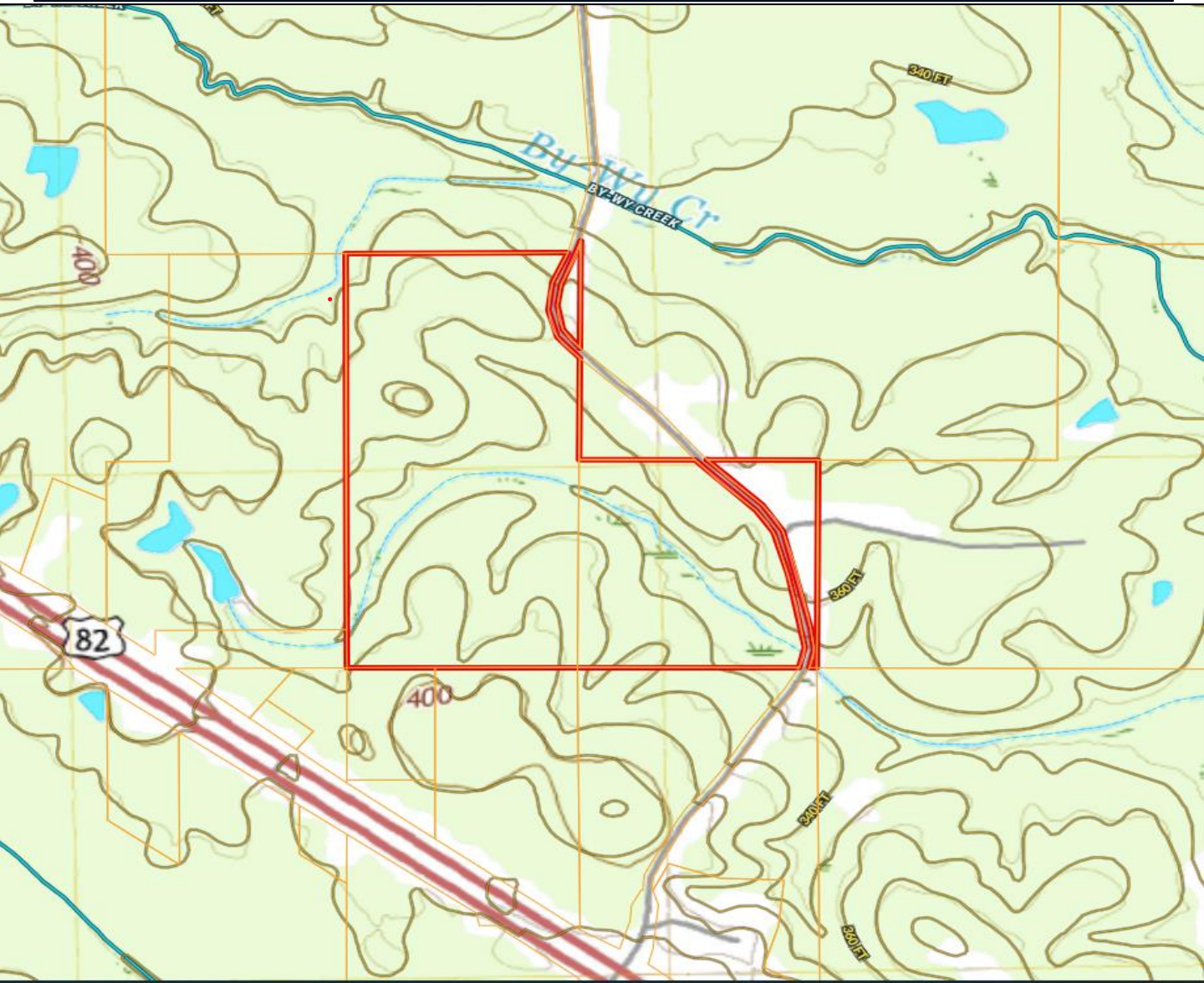
Information is believed to be accurate but not guaranteed.

Information is believed to be accurate but not guaranteed.





# Topographical Map



**DOYES  
HOLLAND**  
REALTOR®

Office: 662.268.6333

Cell: 662.312.2165

DHolland@TomSmithLand.com



Expect More. Get More.

**A Real Estate Expert You Can Trust**

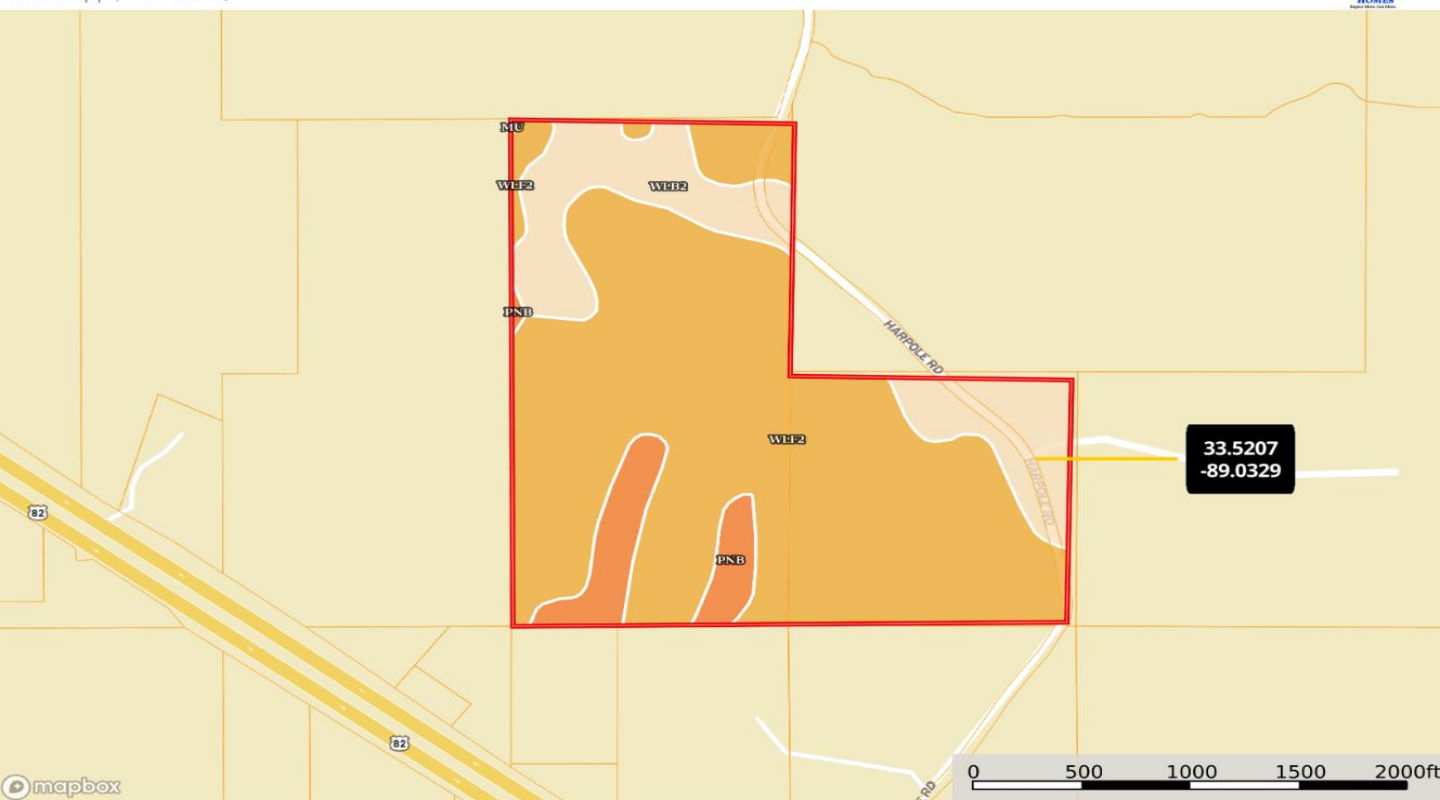
TomSmithLandandHomes.com

Information is believed to be accurate but not guaranteed.



# Soil Map

**120 Oktibbeha (Flora)**  
Mississippi, 120 AC +/-



| Boundary 116.57 ac

SOIL CODE	SOIL DESCRIPTION	ACRES	%	CPI	NCCPI	CAP
WIF2	Wilcox silty clay loam, 12 to 35 percent slopes, eroded	85.81	73.61	0	27	7e
WIB2	Wilcox silty clay loam, 2 to 5 percent slopes, moderately eroded	22.51	19.31	0	45	3e
PnB	Prentiss silt loam, 2 to 5 percent slopes	8.22	7.05	0	54	2e
Mu	Mathiston silt loam, 0 to 2 percent slopes, occasionally flooded	0.03	0.03	0	84	2w
TOTALS		116.57(*)	100%	-	32.39	5.87

(\*) Total acres may differ in the second decimal compared to the sum of each acreage soil. This is due to a round error because we only show the acres of each soil with two decimal.



**DOYES  
HOLLAND**  
REALTOR®

Office: 662.268.6333  
Cell: 662.312.2165  
DHolland@TomSmithLand.com



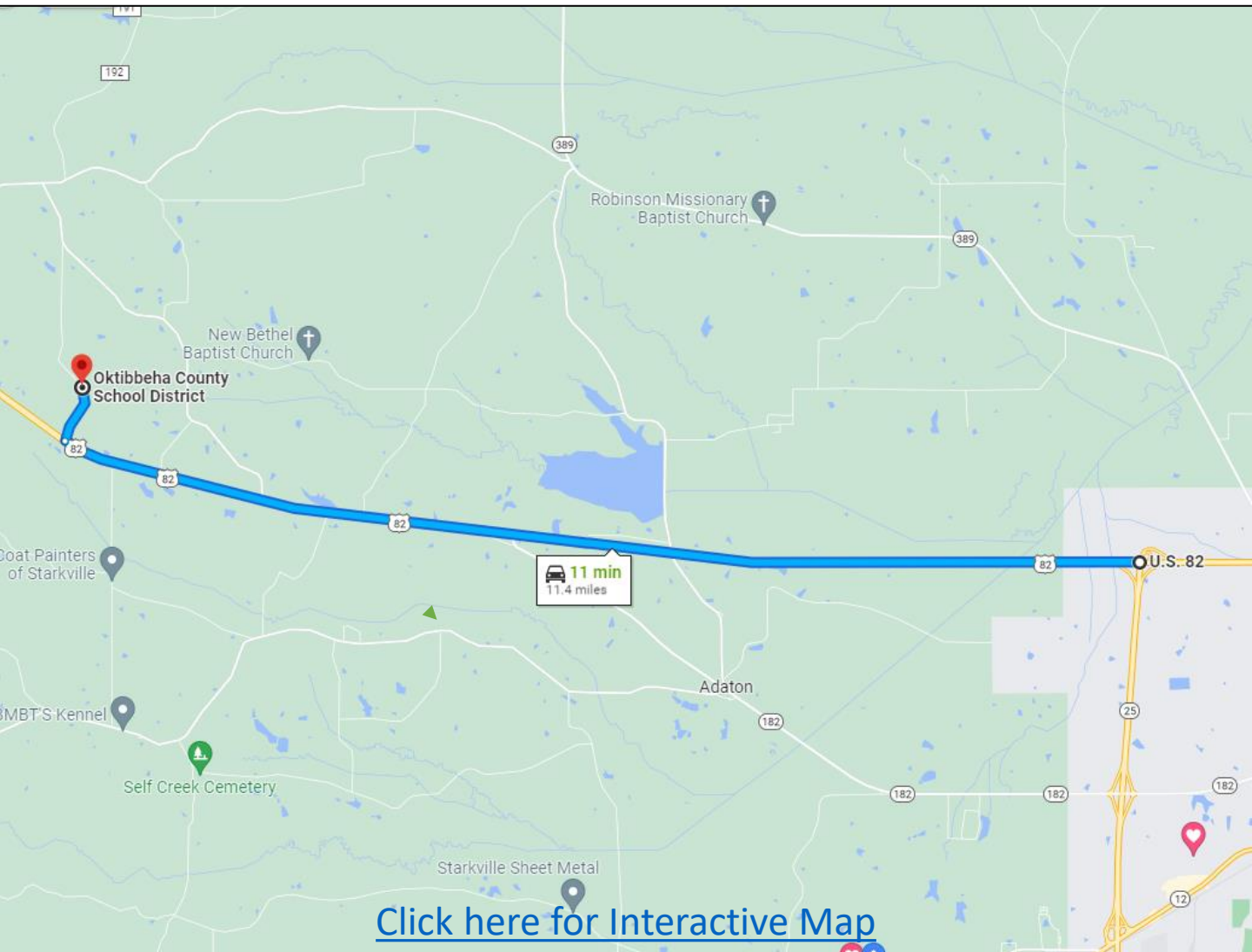
**A Real Estate Expert You Can Trust**  
TomSmithLandandHomes.com

Information is believed to be accurate but not guaranteed.





# Directional Map



**Directions from Hwy 82 and 25 intersection in Starkville, MS:** Travel West on MS 82 for approximately 11 miles, turn right on Harpole road, then North for approximately ½ mile, tract will be on left .



**DOYES  
HOLLAND**  
REALTOR®

Office: 662.268.6333  
Cell: 662.312.2165  
DHolland@TomSmithLand.com



**A Real Estate Expert You Can Trust**  
TomSmithLandandHomes.com

Information is believed to be accurate but not guaranteed.

