

DIVERSE RECREATIONAL TRACT

103± ACRES IN LAUDERDALE COUNTY, MS



\$475,000

Look at this rare property in Lauderdale County, MS, located just north of Meridian! Property in this area doesn't come up for sale too often, and this 103+/- acre tract boasts 1,800 feet of road frontage on highway 45 north. There are about 30+/- acres of merchantable timber on the southeast end of the property, and the remaining portion is in fenced pasture land ready for your cattle operation. Little Reed Creek runs through the center of the property, providing water for your herd and the wildlife, with wild turkeys and deer in abundance. Call Brett today to schedule your private showing!

DIRECTIONS FROM HWY 45 AND I-20 IN MERIDIAN, MS: Take exit 157B towards Macon. Merge onto Hwy 45 and travel 10.8 miles. The property will be on your right. [GOOGLE MAP LINK](#)



**BRETT
CARNEY**
REALTOR®

Office: 601.898.2772

Cell: 601.710.9633

Brett@TomSmithLand.com



Expect More. Get More.

A Real Estate Expert You Can Trust

TomSmithLandandHomes.com

Information is believed to be accurate but not guaranteed.





BRETT CARNEY

REALTOR®

Office: 601.898.2772

Cell: 601.710.9633

Brett@TomSmithLand.com



A Real Estate Expert You Can Trust

TomSmithLandandHomes.com

Information is believed to be accurate but not guaranteed.





BRETT CARNEY
REALTOR®

Office: 601.898.2772

Cell: 601.710.9633

Brett@TomSmithLand.com



A Real Estate Expert You Can Trust
TomSmithLandandHomes.com

Information is believed to be accurate but not guaranteed.



OWNERSHIP MAP



BRETT CARNEY

REALTOR®

Office: 601.898.2772

Cell: 601.710.9633

Brett@TomSmithLand.com



A Real Estate Expert You Can Trust

TomSmithLandandHomes.com

Information is believed to be accurate but not guaranteed.



AERIAL MAP



[CLICK HERE FOR AN INTERACTIVE MAP](#)

BRETT CARNEY

REALTOR®

Office: 601.898.2772

Cell: 601.710.9633

Brett@TomSmithLand.com



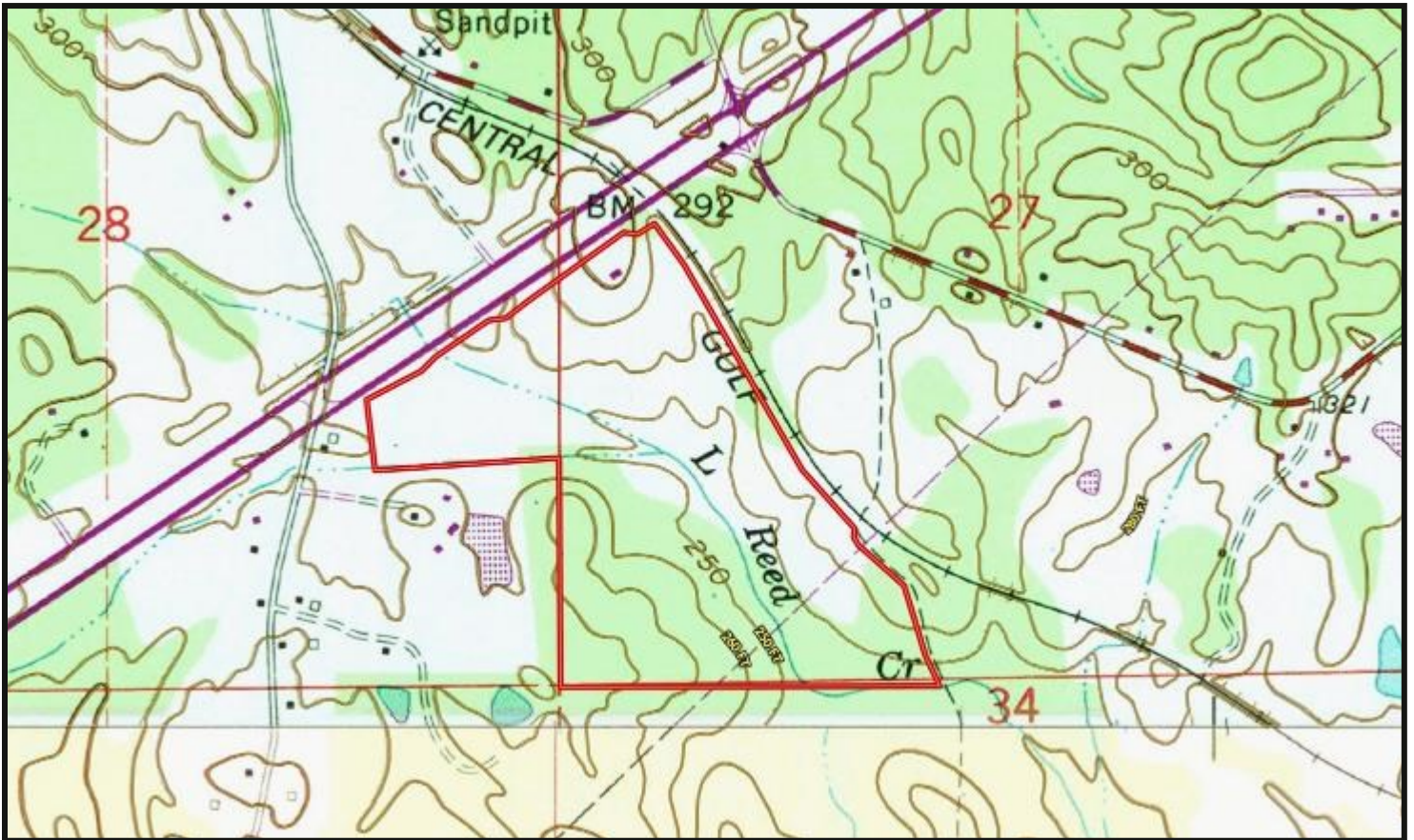
A Real Estate Expert You Can Trust

TomSmithLandandHomes.com

Information is believed to be accurate but not guaranteed.



TOPO MAP



BRETT CARNEY

REALTOR®

Office: 601.898.2772

Cell: 601.710.9633

Brett@TomSmithLand.com



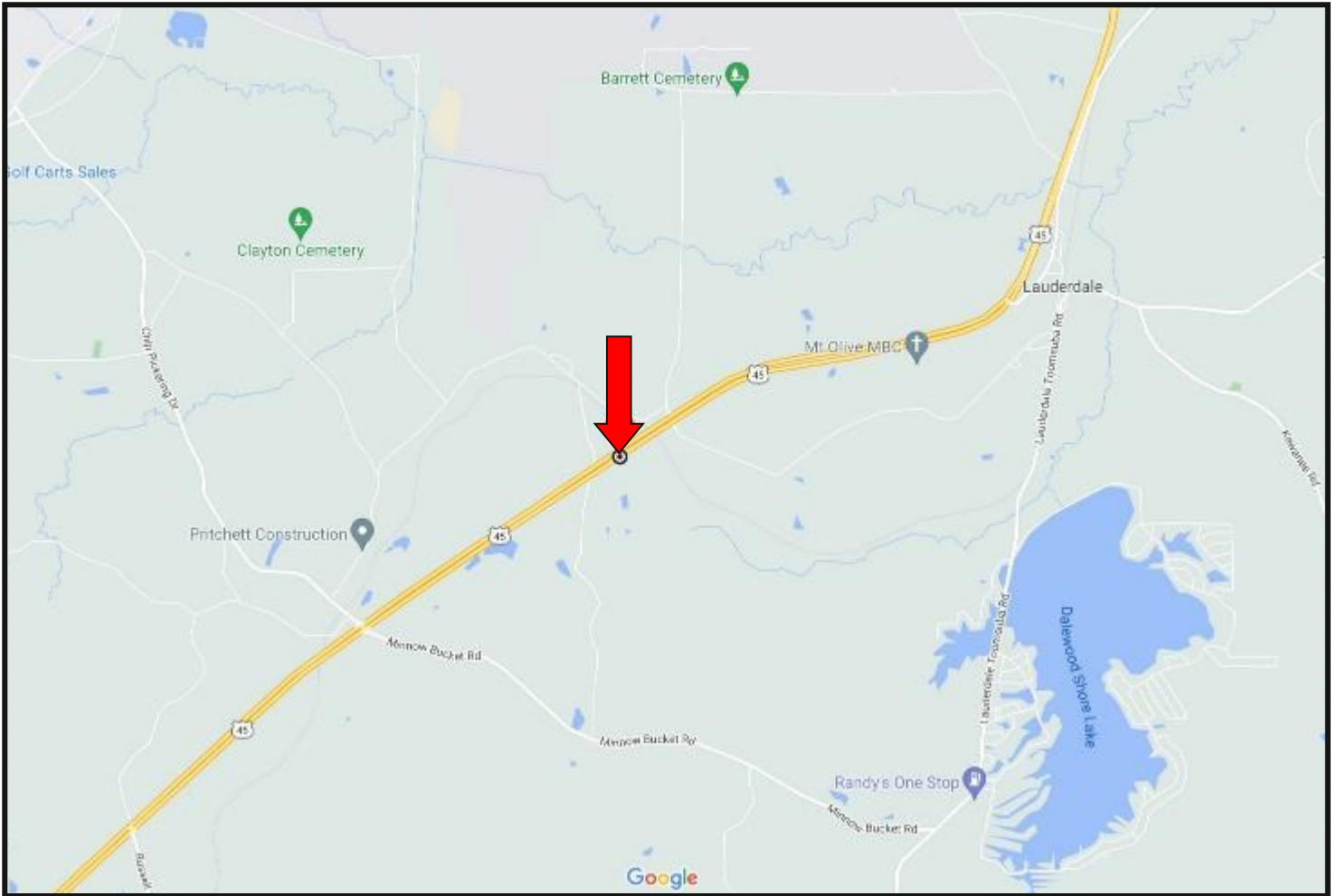
A Real Estate Expert You Can Trust

TomSmithLandandHomes.com

Information is believed to be accurate but not guaranteed.



DIRECTIONAL MAP



DIRECTIONS FROM HWY 45 AND I-20 IN MERIDIAN, MS: Take exit 157B towards Macon. Merge onto Hwy 45 and travel 10.8 miles. The property will be on your right.

[GOOGLE MAP LINK](#)



**BRETT
CARNEY**
REALTOR®

Office: 601.898.2772
Cell: 601.710.9633
Brett@TomSmithLand.com



A Real Estate Expert You Can Trust

TomSmithLandandHomes.com

Information is believed to be accurate but not guaranteed.

