

28.37± Acre Hunting Tract in Jefferson County, MS



Have you been searching for a hunting tract that produces deer and turkey? Welcome to your new 28.37± surveyed acre hunting tract in Jefferson County, MS. This 28.37± acre tract is situated 10 minutes south of Fayette, MS. As you enter the property, you will notice the established road system making for easy access. The timber makeup is a mixture of scattered hardwoods and pines. Hughes creek runs along the property's northern boundary, providing a great water supply for the local wildlife habitat. Deer and turkey signs were noted on the initial inspection, and the property features a good-sized food plot location. There is county road frontage, and utilities are available from the road. Call Kadero Edley today for your private showing!



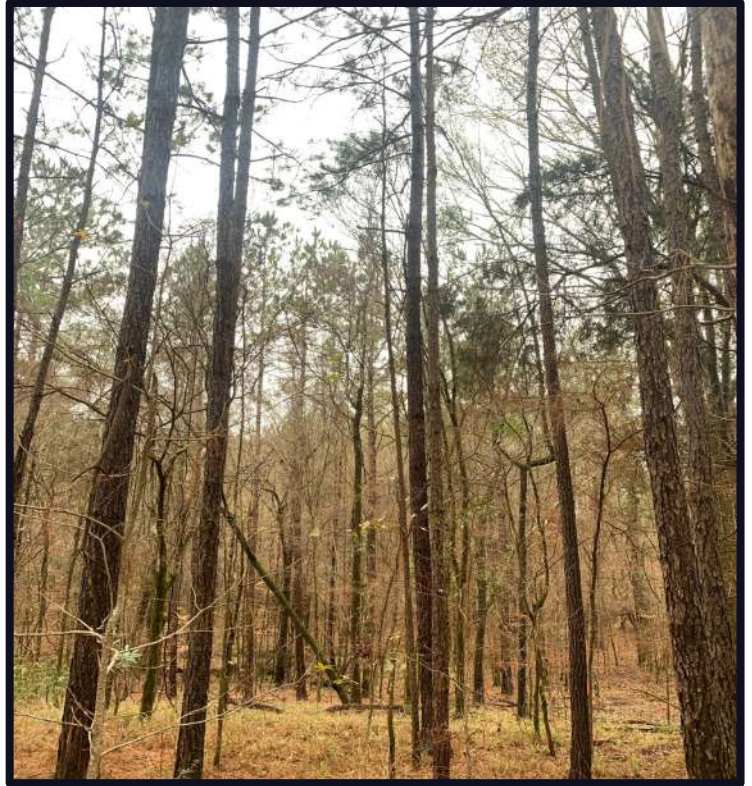
Call me today!

KADERO EDLEY, REALTOR®
Kadero@TomSmithLand.com
601.898.2772 **office** | 601.488.7000 **cell**



TomSmithLandandHomes.com

Information is believed to be accurate but not guaranteed.



Call me today!

KADERO EDLEY, REALTOR®
Kadero@TomSmithLand.com
601.898.2772 **office** | 601.488.7000 **cell**



Expect More. Get More.

TomSmithLandandHomes.com

Information is believed to be accurate but not guaranteed.



Call me today!

KADERO EDLEY, REALTOR®
Kadero@TomSmithLand.com
601.898.2772 office | 601.488.7000 cell



Expect More. Get More.

TomSmithLandandHomes.com

Information is believed to be accurate but not guaranteed.



Call me today!

KADERO EDLEY, REALTOR®
Kadero@TomSmithLand.com
601.898.2772 office | 601.488.7000 cell

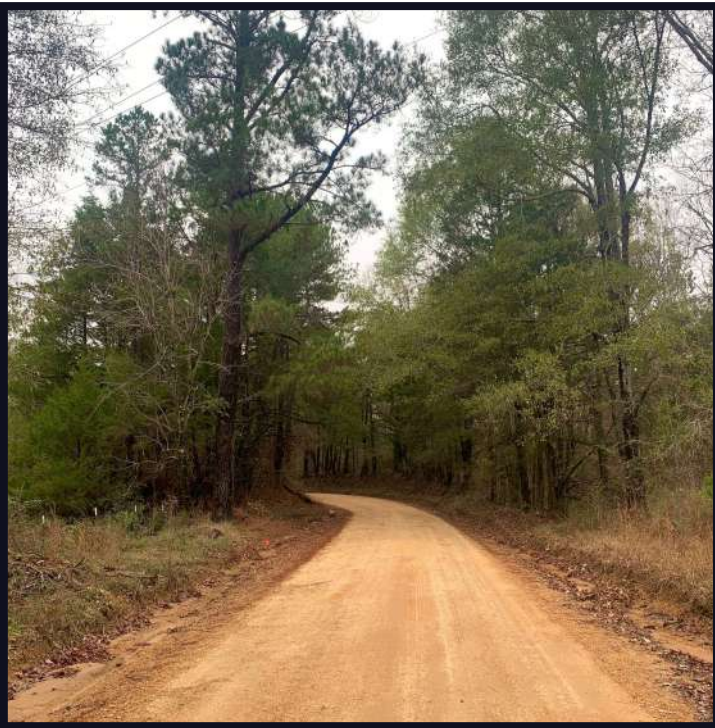


Expect More. Get More.



TomSmithLandandHomes.com

Information is believed to be accurate but not guaranteed.



Call me today!

KADERO EDLEY, REALTOR®
Kadero@TomSmithLand.com
601.898.2772 office | 601.488.7000 cell

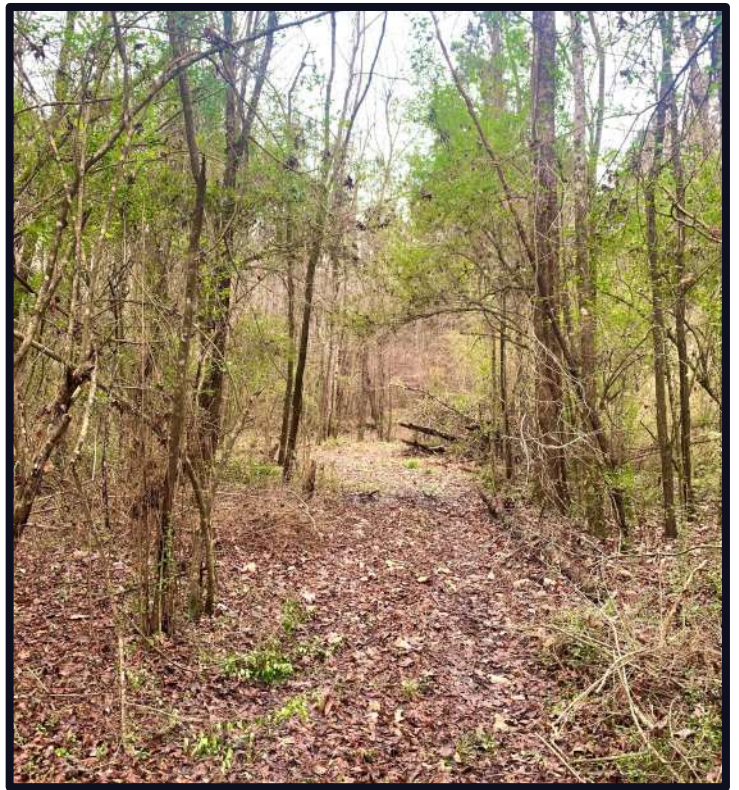


Expect More. Get More.



TomSmithLandandHomes.com

Information is believed to be accurate but not guaranteed.



Call me today!

KADERO EDLEY, REALTOR®
Kadero@TomSmithLand.com
601.898.2772 office | 601.488.7000 cell



Expect More. Get More.



TomSmithLandandHomes.com

Information is believed to be accurate but not guaranteed.

Aerial Map



[Click Here for Interactive Map](#)

Call me today!

KADERO EDLEY, REALTOR®
Kadero@TomSmithLand.com
601.898.2772 office | 601.488.7000 cell



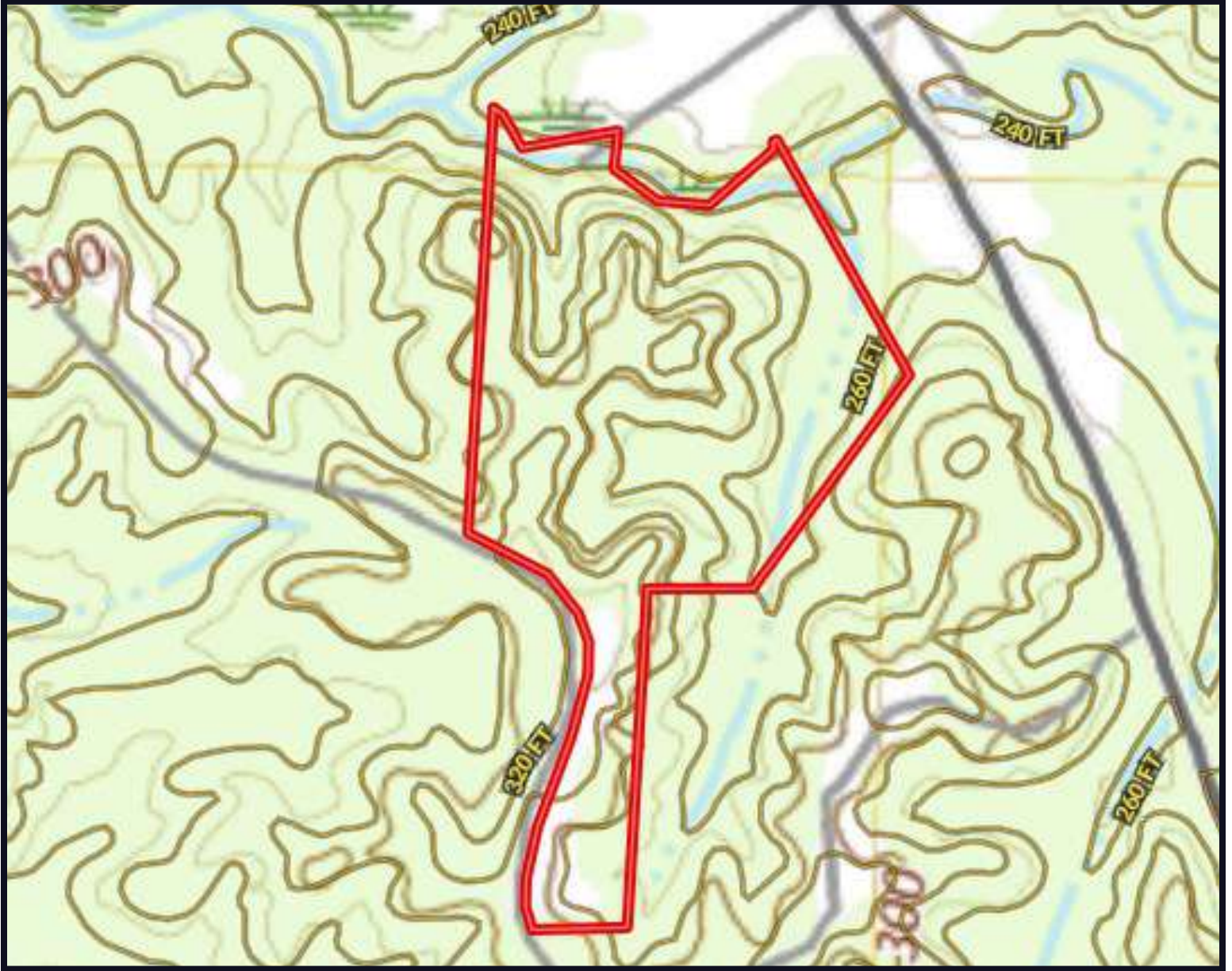
Expect More. Get More.



TomSmithLandandHomes.com

Information is believed to be accurate but not guaranteed.

Topographic Map



*Call me
today!*

KADERO EDLEY, REALTOR®
Kadero@TomSmithLand.com
601.898.2772 **office** | 601.488.7000 **cell**

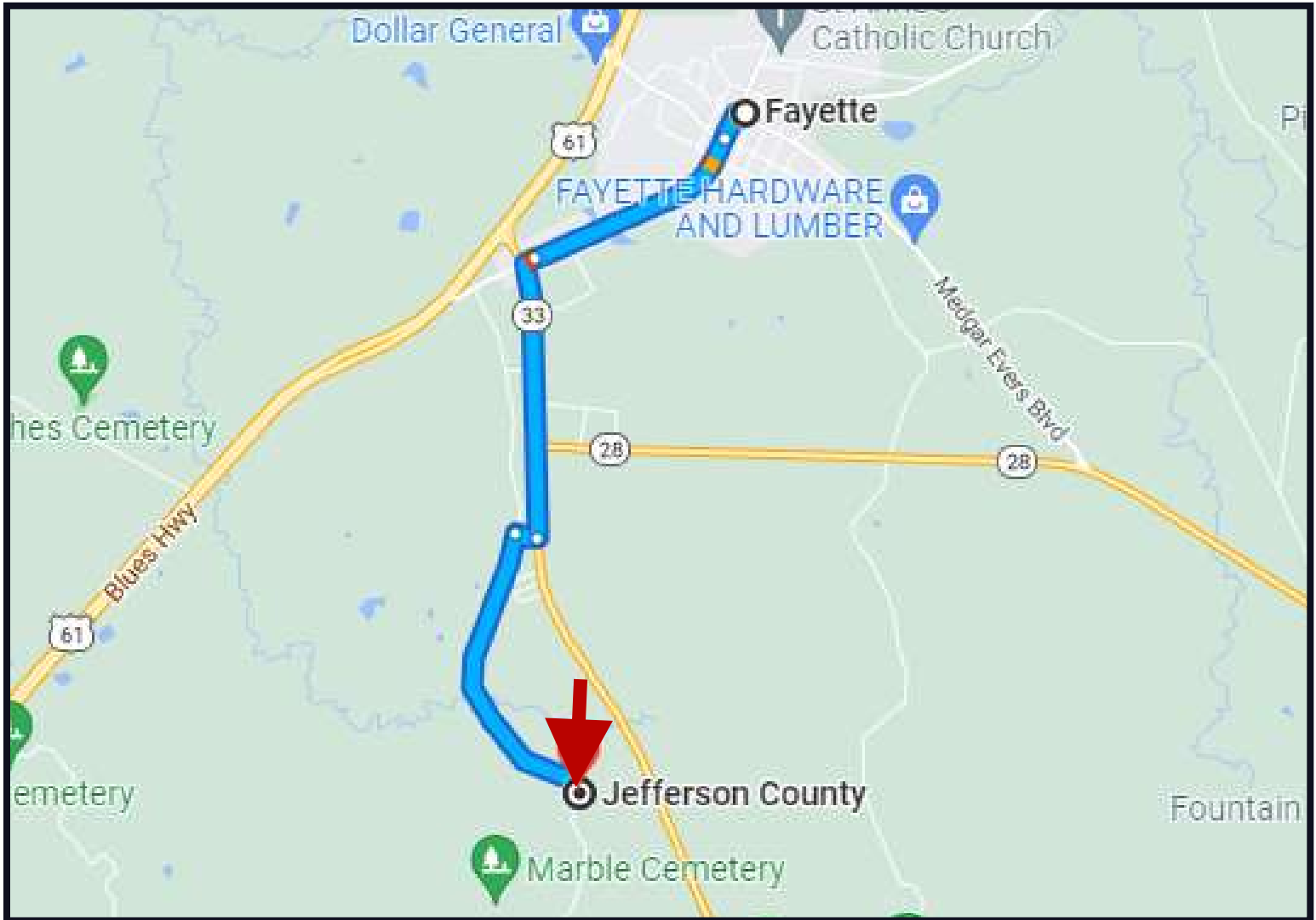


Expect More. Get More.

TomSmithLandandHomes.com

Information is believed to be accurate but not guaranteed.

Directional Map



Directions from Main Street in Fayette, MS: Travel south on Main Street for 0.2 miles. Turn left onto MS-33 south for 1.2 miles. Turn right onto Trudy Rd for 495 ft. Turn left onto McNair Rd for 1.3 miles and the property will be on your left.

[Google Maps Link](#)



Call me today!

KADERO EDLEY, REALTOR®
Kadero@TomSmithLand.com
601.898.2772 **office** | 601.488.7000 **cell**



TomSmithLandandHomes.com

Information is believed to be accurate but not guaranteed.