

# RECREATIONAL OR INVESTMENT PROPERTY

## 34± ACRES IN LEAKE COUNTY, MS



Check out this great Leake County, MS, recreational or investment tract consisting of 34± acres off Highway 35 just outside the city limits of Carthage. This tract is mostly all hardwoods consisting of red oak and water oak and is located less than a quarter mile from the Pearl River. This property would make a great hunting tract, with several deer signs noted upon initial inspection. Please call Chad for your showing today!

DIRECTIONS FROM HWY 16 AND HWY 35 IN CARTHAGE, MS: Travel South on Hwy 35 for 1.7 miles. Turn left on S Van Buren Street. The entrance to the property will be on your left.

[GOOGLE MAP LINK](#)



*Call me today!*

**CHAD WILSON, REALTOR®**  
Chad@TomSmithLand.com  
601.898.2772 **office** | 601.750.1970 **cell**



# TomSmithLandandHomes.com

Information is believed to be accurate but not guaranteed.





*Call me today!*

**CHAD WILSON, REALTOR®**  
 Chad@TomSmithLand.com  
 601.898.2772 **office** | 601.750.1970 **cell**



**TomSmithLandandHomes.com**

Information is believed to be accurate but not guaranteed.



# AERIAL MAP



[Click Here for an Interactive Map](#)

*Call me today!*

**CHAD WILSON**, REALTOR®

Chad@TomSmithLand.com

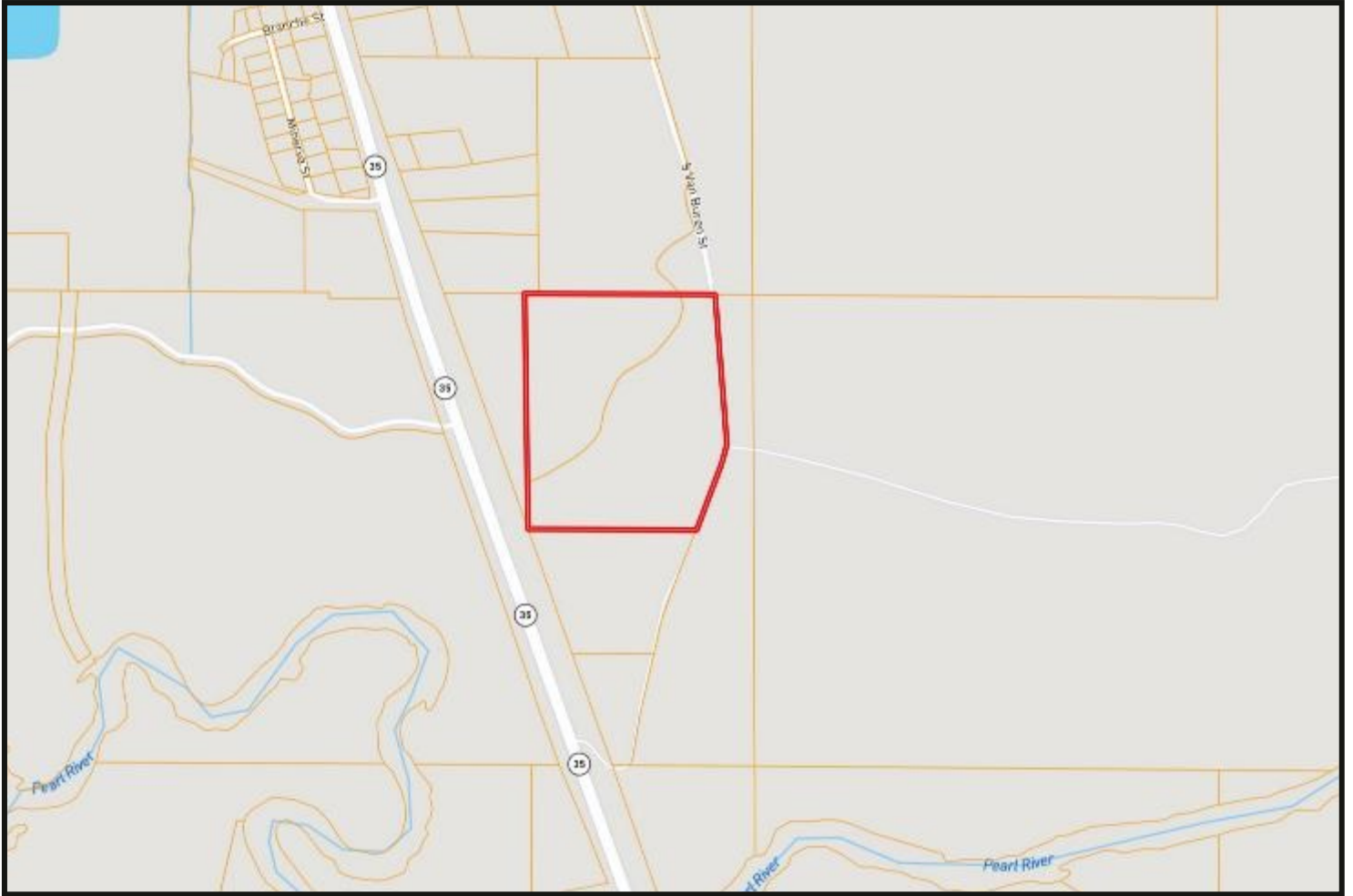
601.898.2772 **office** | 601.750.1970 **cell**



**TomSmithLandandHomes.com**

Information is believed to be accurate but not guaranteed.

# OWNERSHIP MAP



*Call me today!*

**CHAD WILSON, REALTOR®**

Chad@TomSmithLand.com

601.898.2772 **office** | 601.750.1970 **cell**

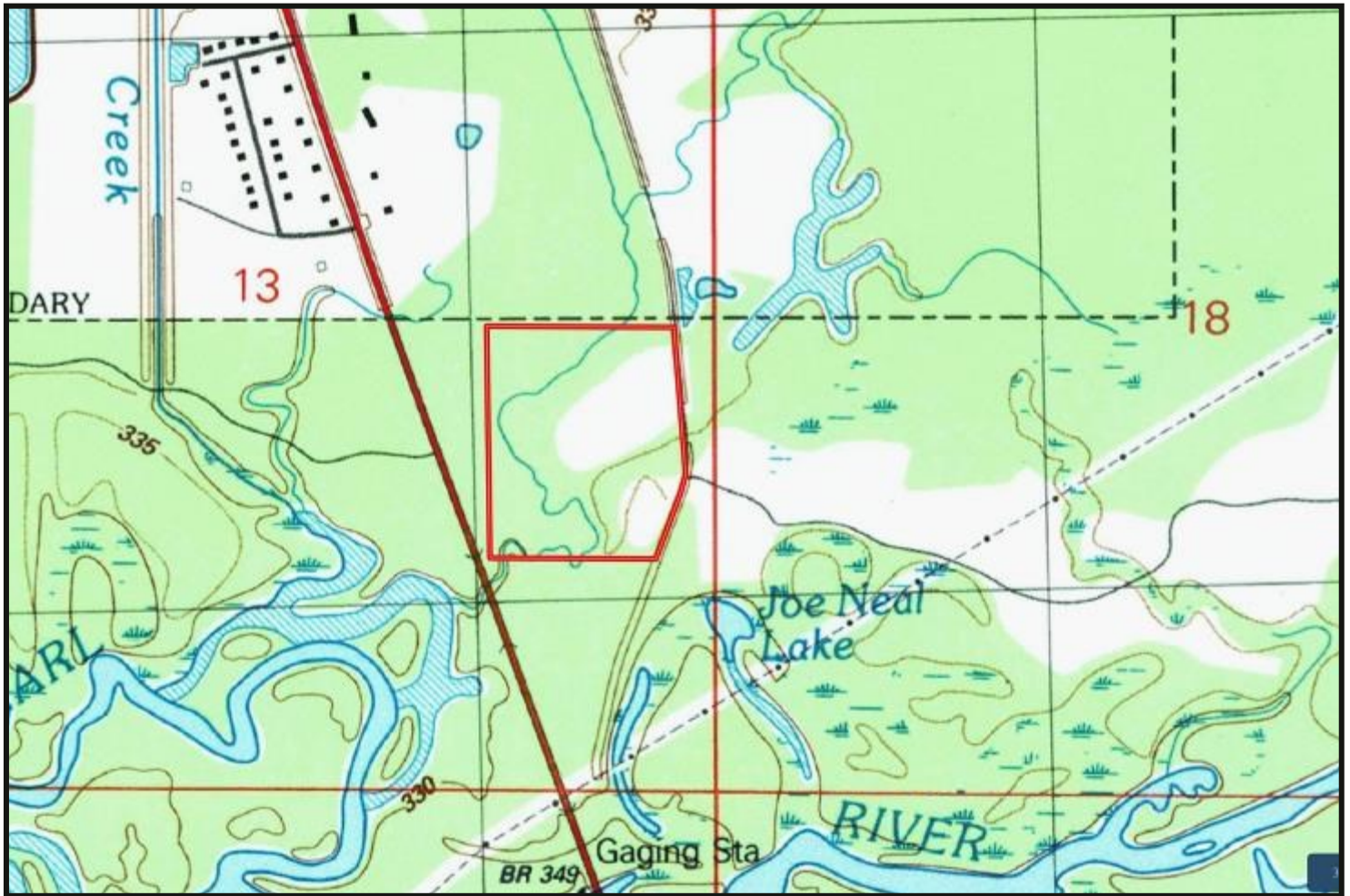


**TomSmithLandandHomes.com**

Information is believed to be accurate but not guaranteed.



# TOPOGRAPHY MAP



*Call me today!*

**CHAD WILSON, REALTOR®**

Chad@TomSmithLand.com

601.898.2772 office | 601.750.1970 cell

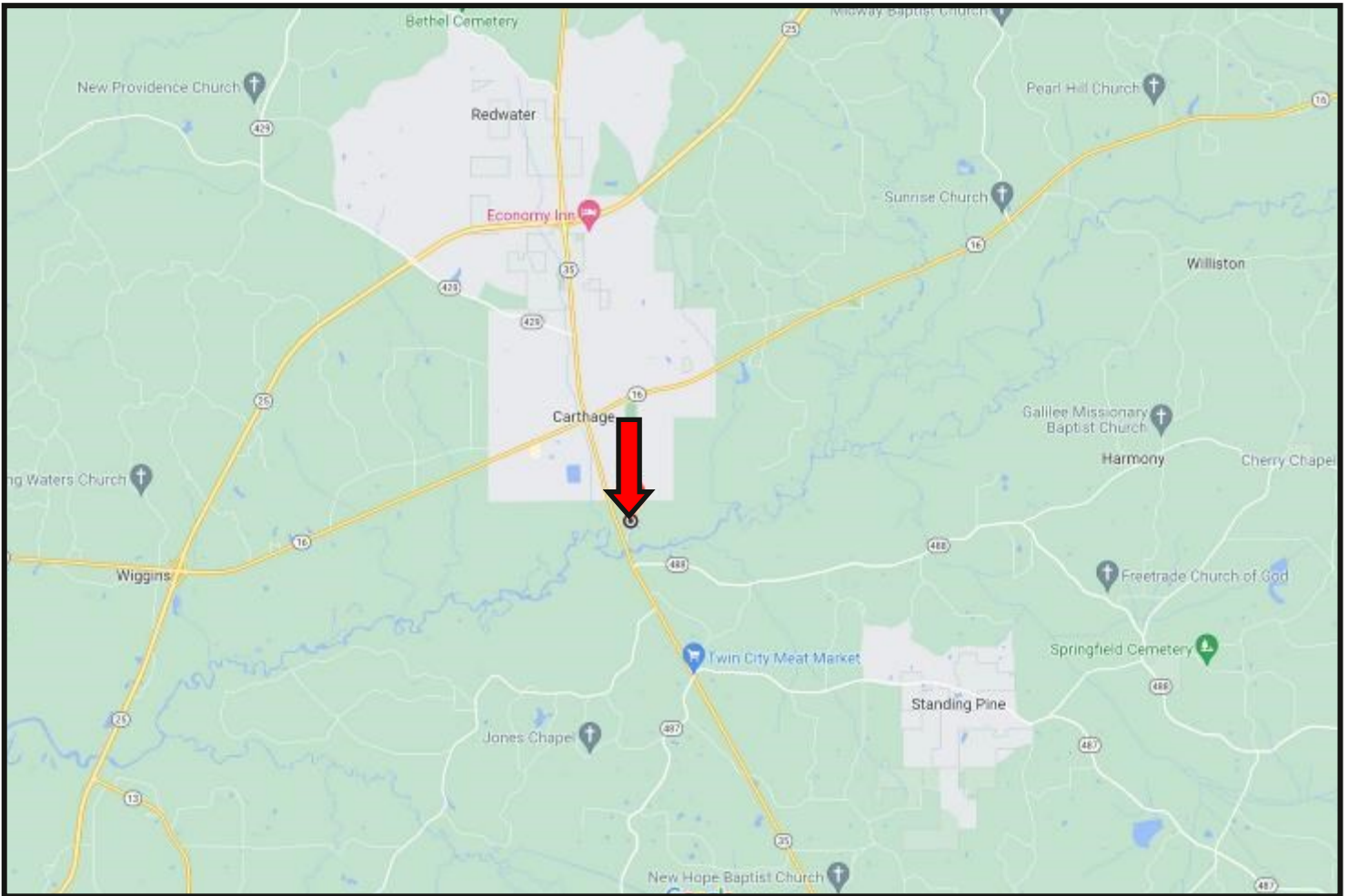


Expect More. Get More.

**TomSmithLandandHomes.com**

Information is believed to be accurate but not guaranteed.

# DIRECTIONAL MAP



**DIRECTIONS FROM HWY 16 AND HWY 35 IN CARTHAGE, MS:** Travel South on Hwy 35 for 1.7 miles. Turn left on S Van Buren Street. The entrance to the property will be on your left. [GOOGLE MAP LINK](#)



*Call me today!*

**CHAD WILSON, REALTOR®**  
Chad@TomSmithLand.com  
601.898.2772 **office** | 601.750.1970 **cell**



**TomSmithLandandHomes.com**

Information is believed to be accurate but not guaranteed.