

# Multi Family Rental Property

## Sunflower County, MS



**\$180,000**

### **109 East Percy Street Indianola, MS 38751**

This income-producing multi-family rental property has two spacious units currently leased and producing cash flow. The perfect location is on a large 0.25+/- acre lot close to downtown Indianola in Sunflower County, MS. Two stories with a unit on each floor totaling 2,475 square feet with large front porches facing East Percy Street. Call Emerson today for your private showing.

**Directions from the intersection of Hwy 49 and Hwy 82 in Indianola, MS:** Travel West on Hwy 82 for approximately 0.7 miles, turn left onto N. Sunflower Ave. In 0.3 miles turn right onto E. Percy St and in 0.2 miles the destination is on the right.



*Call me today!*

**EMERSON LOVELACE, REALTOR®**  
Emerson@TomSmithLand.com  
662.441.2500 **office** | 662.715.3302 **cell**



**TomSmithLandandHomes.com**

Information is believed to be accurate but not guaranteed.





*Call me today!*

**EMERSON LOVELACE**, REALTOR®  
 Emerson@TomSmithLand.com  
 662.441.2500 **office** | 662.715.3302 **cell**

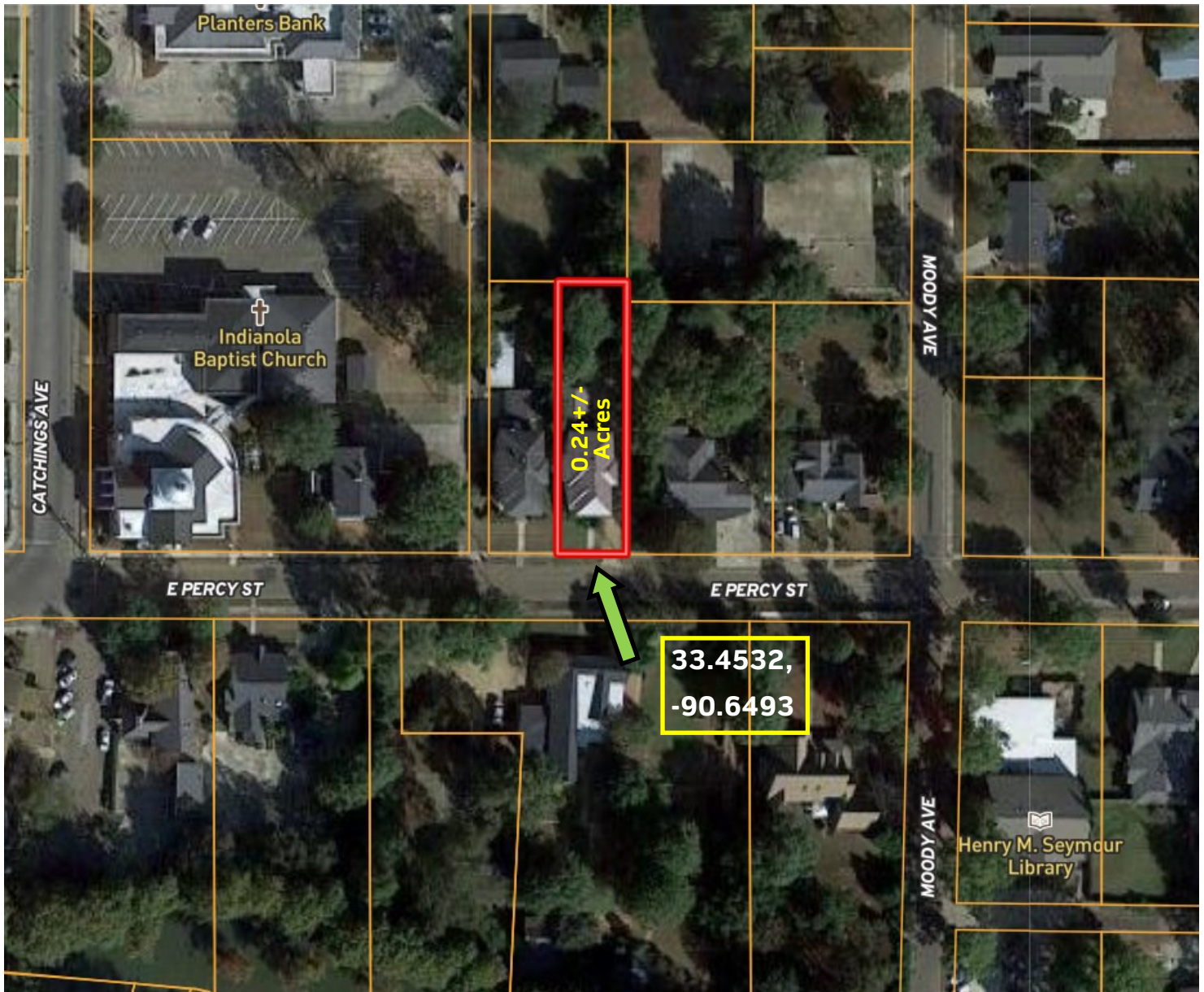


**TomSmithLandandHomes.com**

Information is believed to be accurate but not guaranteed.



# AERIAL MAP



[Click for Interactive Map](#)

*Call me today!*

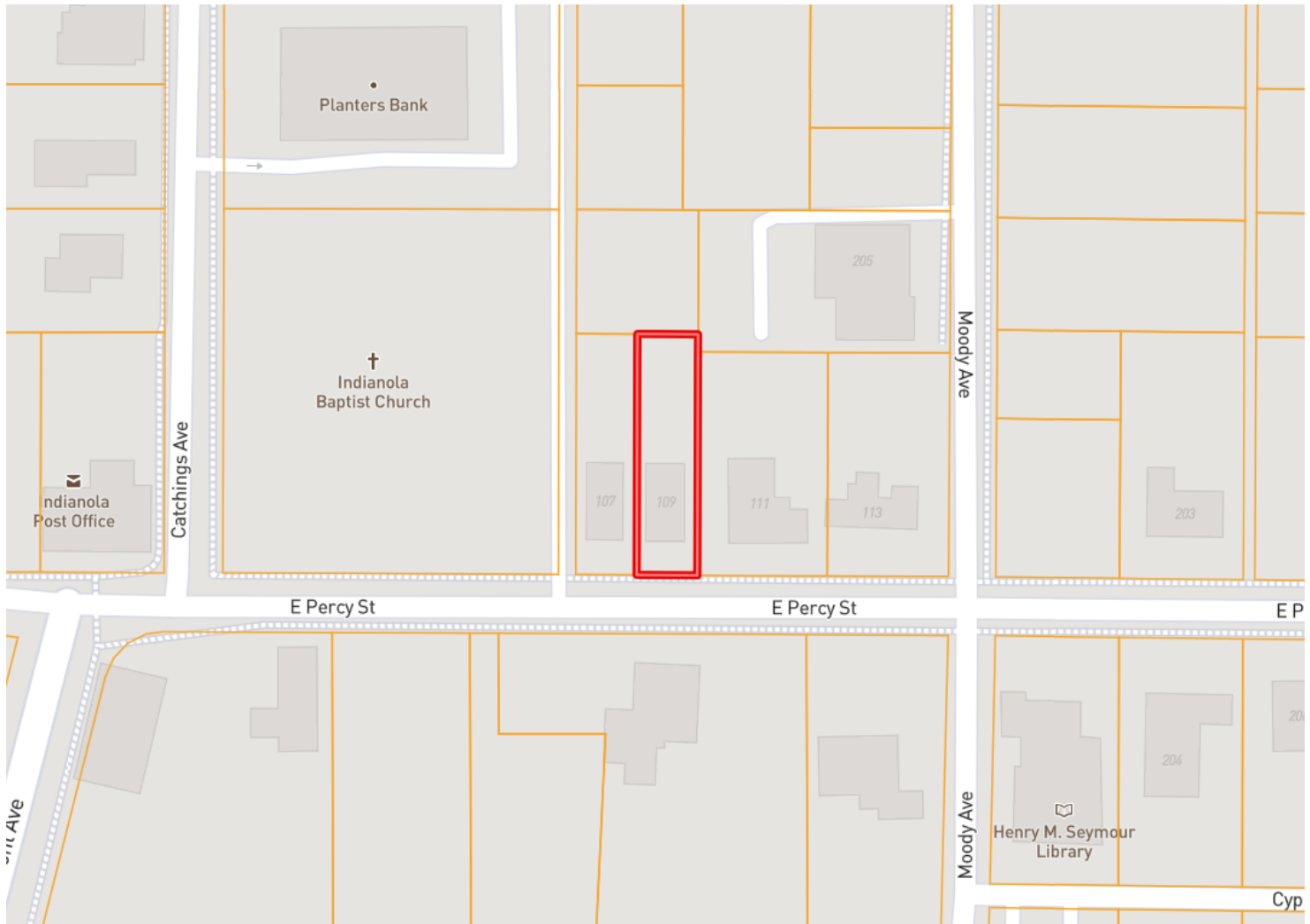
**EMERSON LOVELACE**, REALTOR®  
Emerson@TomSmithLand.com  
662.441.2500 **office** | 662.715.3302 **cell**



**TomSmithLandandHomes.com**

Information is believed to be accurate but not guaranteed.

# OWNERSHIP MAP



*Call me today!*

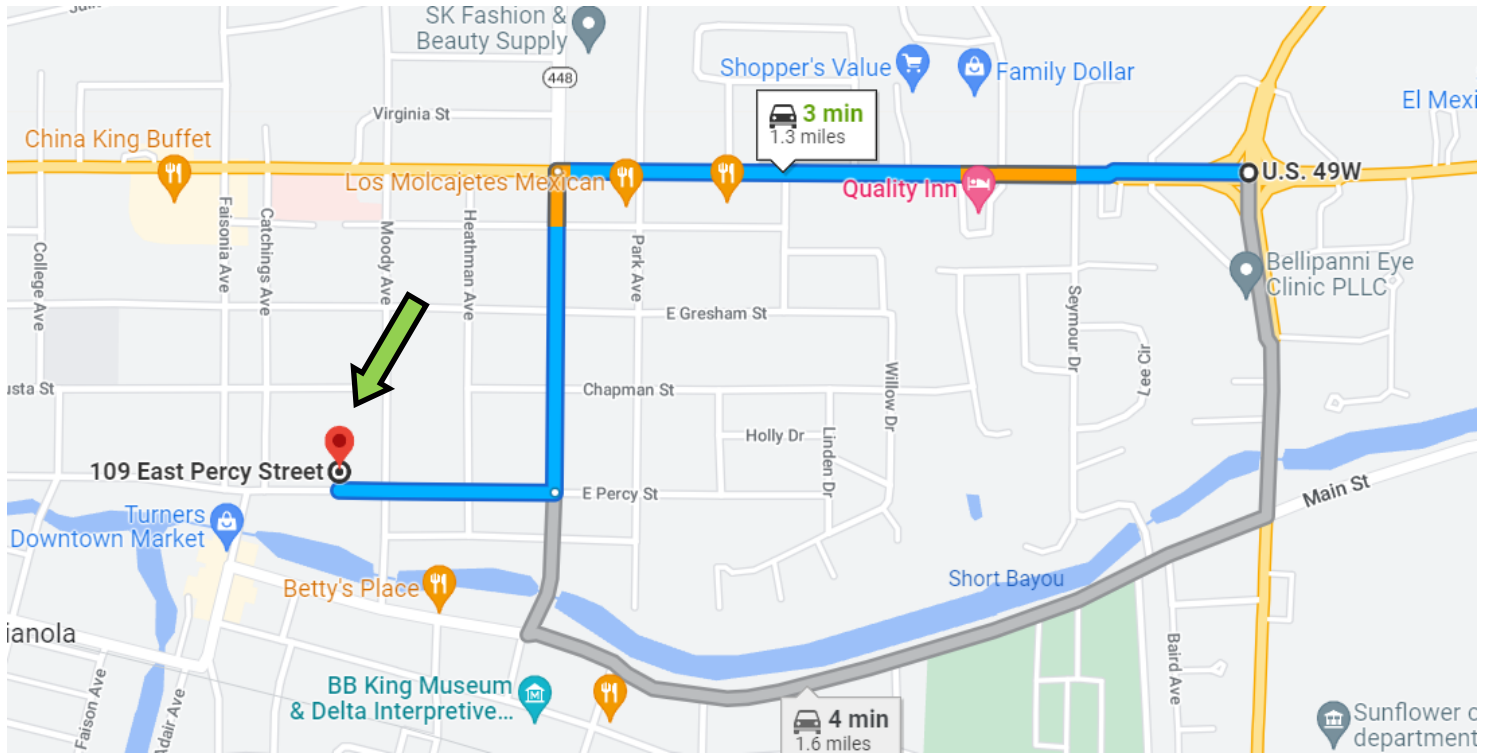
**EMERSON LOVELACE**, REALTOR®  
Emerson@TomSmithLand.com  
662.441.2500 **office** | 662.715.3302 **cell**



**TomSmithLandandHomes.com**

Information is believed to be accurate but not guaranteed.

# DIRECTIONAL MAP



**Address: 109 East Percy St. Indianola, MS 38751**

**Directions from the intersection of Hwy 49 & Hwy 82 in Indianola, MS:** Travel West on Hwy 82 for approximately 0.7 miles, turn left onto N. Sunflower Ave. In 0.3 miles turn right onto E. Percy St and in 0.2 miles the destination is on the right. [Click for Google Map directions.](#)

*Call me today!*

**EMERSON LOVELACE**, REALTOR®  
Emerson@TomSmithLand.com  
662.441.2500 **office** | 662.715.3302 **cell**



Expect More. Get More.

**TomSmithLandandHomes.com**

Information is believed to be accurate but not guaranteed.