

Quaint Family Home in Leflore County, MS

304 West Monroe Ave Greenwood, MS

\$129,500



Remodeled to perfection in Leflore County, MS! 304 West Monroe Ave in Greenwood, MS is a three bedroom, two bathroom house at 1,503 sq. ft. This beautiful home is just off Park Avenue, close to shopping and dining in downtown Greenwood. Here are just a few of its wonderful features: eat-in kitchen, new modern flooring throughout, remodeled bathrooms, freshly painted, formal dining featuring wainscoting, great size laundry/ mudroom, newly painted back deck perfect for entertaining, and excellent backyard with lots of room for kids or pets to play.



Call me today!

ANTHONY STEEN, REALTOR®
Anthony@TomSmithLand.com
662.441.2500 office | 662.645.5151 cell



TomSmithLandandHomes.com

Information is believed to be accurate but not guaranteed.



Call me today!

ANTHONY STEEN, REALTOR®
Anthony@TomSmithLand.com
662.441.2500 office | 662.645.5151 cell



Expect More. Get More.



TomSmithLandandHomes.com

Information is believed to be accurate but not guaranteed.



Call me today!

ANTHONY STEEN, REALTOR
Anthony@TomSmithLand.com

662.441.2500 **office** | 662.645.5151 **cell**



Expect More. Get More.



TomSmithLandandHomes.com

Information is believed to be accurate but not guaranteed.



Call me today!

ANTHONY STEEN, REALTOR
Anthony@TomSmithLand.com
662.441.2500 office | 662.645.5151 cell

Tom Smith
LAND AND HOMES
Expect More. Get More.

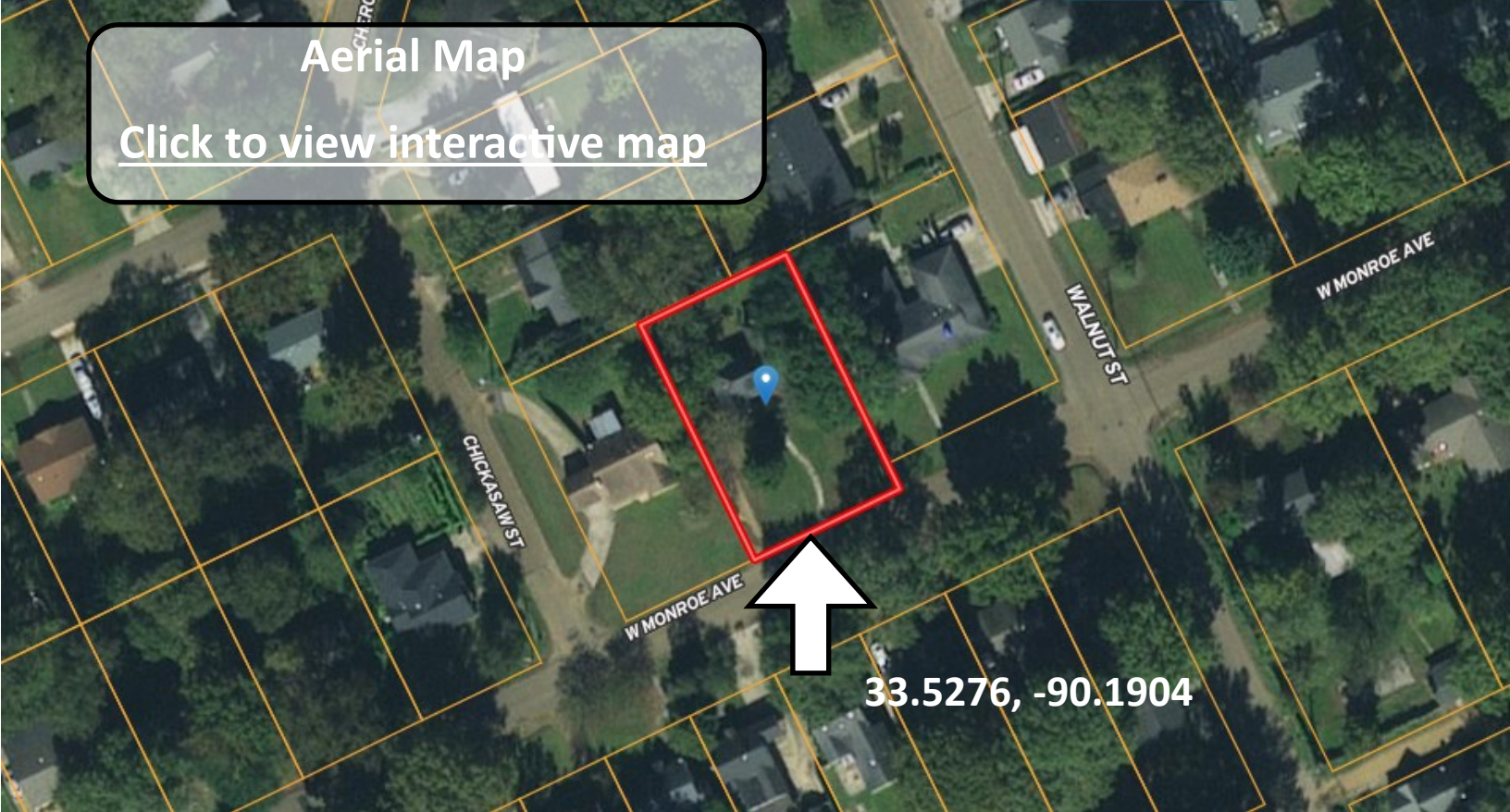
LandReport
2011-2022
BEST
BROKERAGES

TomSmithLandandHomes.com

Information is believed to be accurate but not guaranteed.

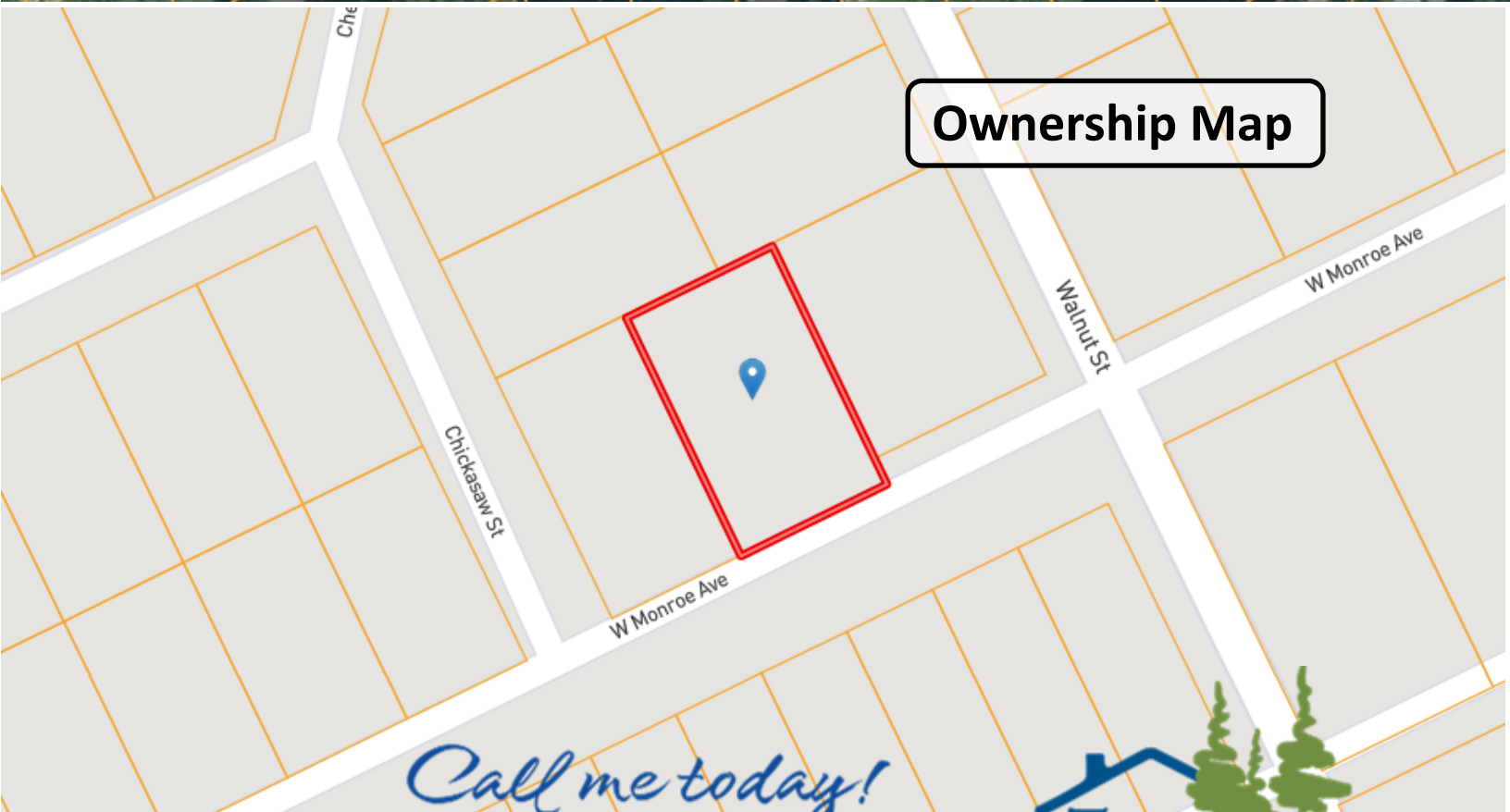
Aerial Map

[Click to view interactive map](#)



33.5276, -90.1904

Ownership Map



Call me today!

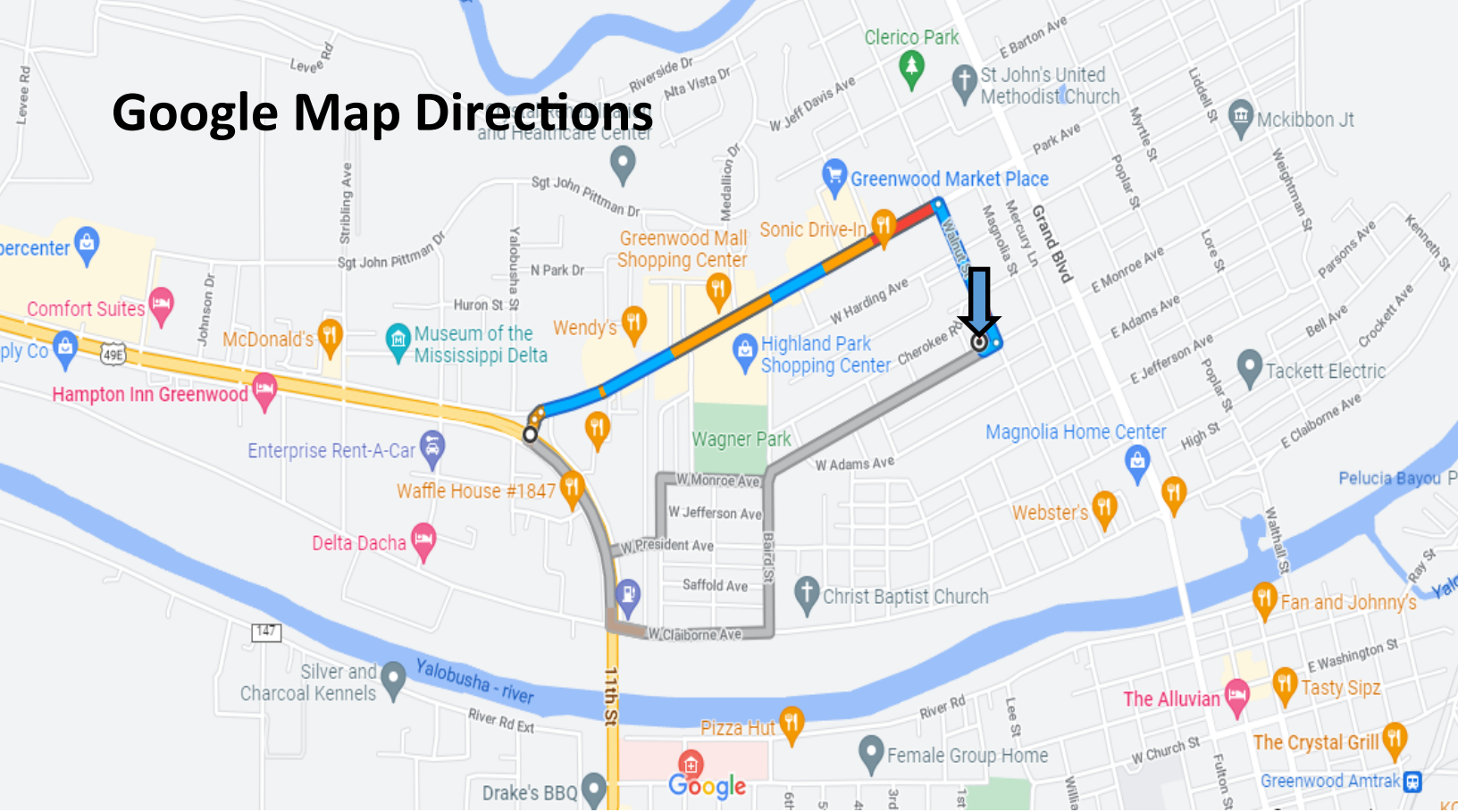


ANTHONY STEEN, REALTOR®
Anthony@TomSmithLand.com
662.441.2500 office | 662.645.5151 cell

TomSmithLandandHomes.com

Information is believed to be accurate but not guaranteed.

Google Map Directions



Directions from the intersection of Hwy 82 in Greenwood, MS:

Head northeast toward US-49E N/US-82 W. Turn right toward W Park Ave and make a slight right onto W Park Ave. Continue for .9 of a mile and make a right turn onto Walnut Street. In .3 of a mile, turn right onto Monroe Ave. The house will be on your right in 154 feet.

Address: 304 W Monroe Ave Greenwood, MS

[Google Map Link](#)

Call me today!

ANTHONY STEEN, REALTOR®
Anthony@TomSmithLand.com
662.441.2500 office | 662.645.5151 cell



TomSmithLandandHomes.com

Information is believed to be accurate but not guaranteed.