

# 3 Bed/2 Bath Home on .42± Acres in Rankin County, MS



**136 Valley Cove, Florence, MS**

**\$139,900**

Check out this well-kept three bedroom, two bathroom, 1,200± sq. ft. 2022 single wide mobile home. The mobile home is sitting on .42± acres in Florence, Rankin County, MS. This property is located just minutes from the amenities of Florence, MS, and just 20 minutes from the shopping, dining, and entertainment found in the Jackson Metro area. This would make an ideal first time home for someone or could even be used as an income producing property if it were turned into a rental home. Additionally, it is located less than an hour from the Nissan plant and the Amazon distribution center. Call Preston Smith O:601.990.5070 C:601.209.7150 for a private showing today!

*Directions from the intersection of Hwy 469 and US 49S in Florence, MS: Travel south on US-49S in 1.1 miles, turn left onto Eagle Post Rd in .7 miles, turn right onto Williams Rd in .8 miles, turn right onto Rolling Hills Blvd, in .2 miles, turn left onto Valley Cove, in .1 miles, the property will be on the left.*



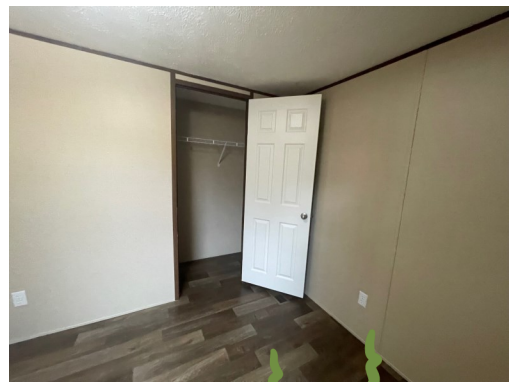
*Call me today!*

**PRESTON SMITH**, MANAGING BROKER  
Preston@TomSmithLand.com  
601.990.5070 **office** | 601.209.7150 **cell**



**TomSmithLandandHomes.com**

Information is believed to be accurate but not guaranteed.



*Call me today!*

**PRESTON SMITH**, MANAGING BROKER  
Preston@TomSmithLand.com  
601.990.5070 office | 601.209.7150 cell



**TomSmithLandandHomes.com**

Information is believed to be accurate but not guaranteed.



*Call me today!*

**PRESTON SMITH**, MANAGING BROKER  
Preston@TomSmithLand.com  
601.990.5070 office | 601.209.7150 cell



**TomSmithLandandHomes.com**

Information is believed to be accurate but not guaranteed.



*Call me today!*

**PRESTON SMITH**, MANAGING BROKER  
Preston@TomSmithLand.com  
601.990.5070 office | 601.209.7150 cell



**TomSmithLandandHomes.com**

Information is believed to be accurate but not guaranteed.



32.1481  
-90.0862



.42± Acres

[Interactive Map Link](#)

**Aerial Map**

*Call me today!*

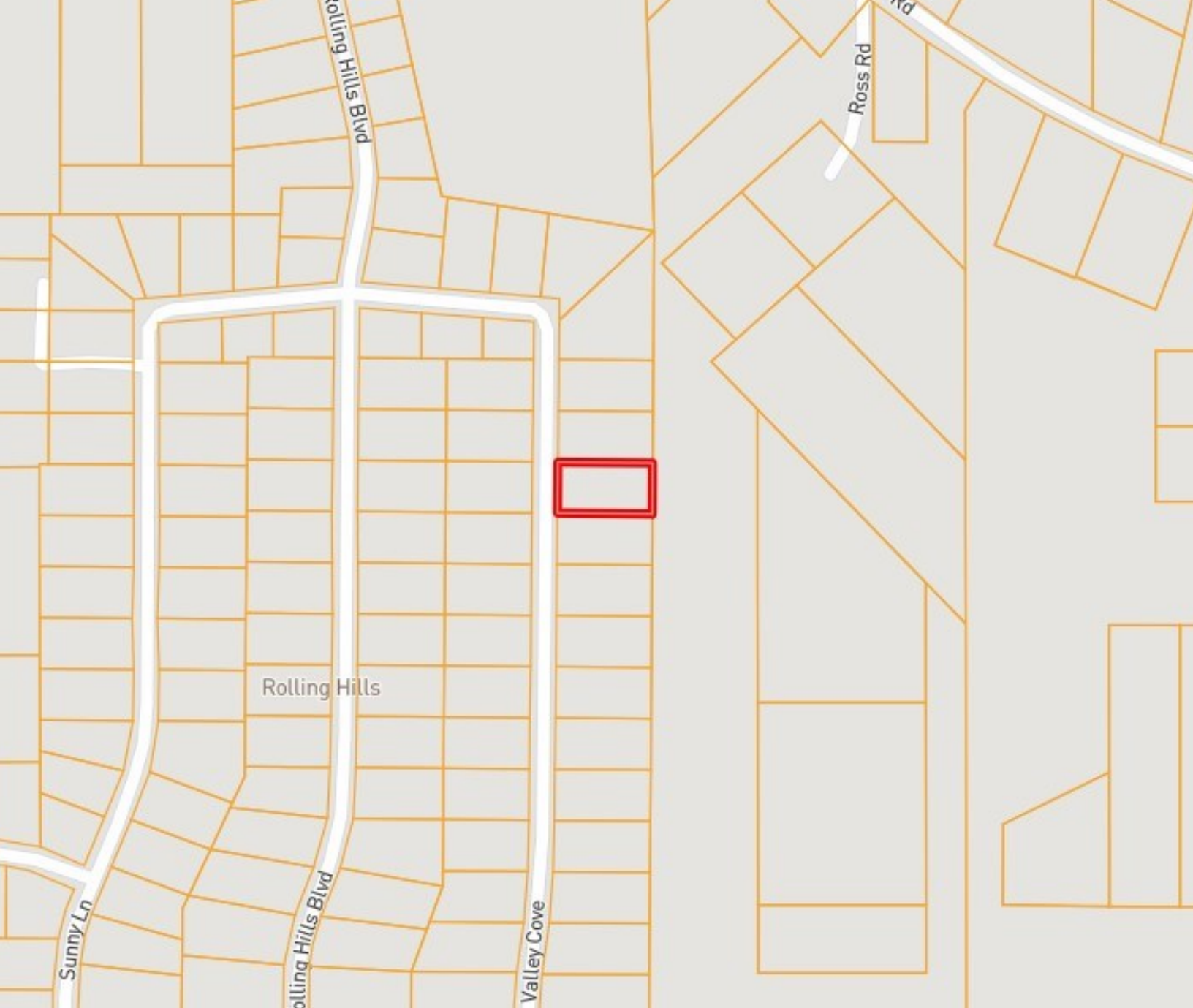
**PRESTON SMITH**, MANAGING BROKER  
Preston@TomSmithLand.com  
601.990.5070 **office** | 601.209.7150 **cell**



Expect More. Get More.

**TomSmithLandandHomes.com**

Information is believed to be accurate but not guaranteed.



## Ownership Map

*Call me today!*

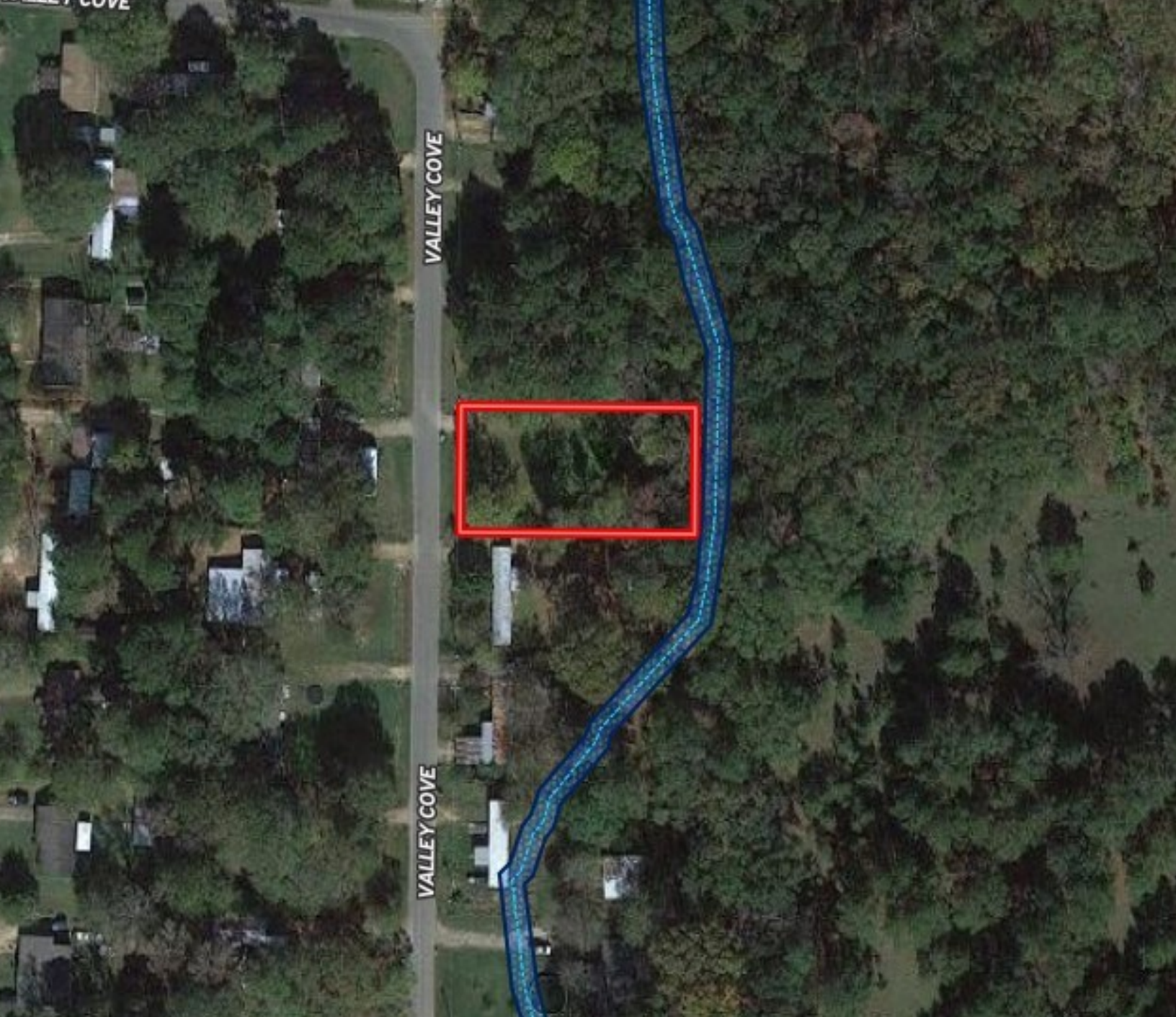
**PRESTON SMITH**, MANAGING BROKER  
Preston@TomSmithLand.com  
601.990.5070 **office** | 601.209.7150 **cell**



Expect More. Get More.

**TomSmithLandandHomes.com**

Information is believed to be accurate but not guaranteed.



## Flood Map

*Call me today!*

**PRESTON SMITH**, MANAGING BROKER  
Preston@TomSmithLand.com  
601.990.5070 **office** | 601.209.7150 **cell**



Expect More. Get More.

**TomSmithLandandHomes.com**

Information is believed to be accurate but not guaranteed.



[Google Map Link](#)

## Directional Map

*Directions from the intersection of Hwy 469 and US 49S in Florence, MS: Travel south on US-49S in 1.1 miles, turn left onto Eagle Post Rd in .7 miles, turn right onto Williams Rd in .8 miles, turn right onto Rolling Hills Blvd, in .2 miles, turn left onto Valley Cove, in .1 miles, the property will be on the left.*

*Call me today!*

**PRESTON SMITH**, MANAGING BROKER  
Preston@TomSmithLand.com  
601.990.5070 **office** | 601.209.7150 **cell**



Expect More. Get More.

[TomSmithLandandHomes.com](http://TomSmithLandandHomes.com)

Information is believed to be accurate but not guaranteed.