

Diamond Island

487.5± ACRES IN MADISON PARISH, LOUISIANA



\$5,950/ACRE

Welcome to Diamond Island! One of the South's best-kept secrets for trophy whitetail. Once you enter the gates of this private island, you will quickly realize that you are in a special place. The island lies on the Mississippi River banks and has been intensely managed for decades. The property features 487.5± acres of hardwood bottoms with timber ranging in age from 40-plus years old to very mature massive hardwood timber. There is over one mile of river frontage on the high side of the river, and it rarely floods. There is water and underground power already on the property. The purchase of this property also includes a lot on Diamond Island, providing an excellent building site for your lodge or cabin. There are nine established food plots and a gas line running through part of the interior property that provides for massive food plots and hunting areas. The western 205± acres are made up of magnificent hardwood timber, which also makes for an excellent timber investment. You will find several small ponds on the property that may provide fishing for your enjoyment. The internal road system is extensive, providing access throughout the property. Once you have spent your day hunting for your trophy or smashing ducks, you are just a short drive from the quality restaurants and casino nightlife in Vicksburg, MS. To schedule your private tour of this 487.5± acres of paradise, give Tom Smith a call at 601.454.9397.



*Call the
land man
today!*

TOM SMITH, ALC®, BROKER

Tom@TomSmithLand.com

601.898.2772 **office** | 601.454.9397 **cell**



TomSmithLandandHomes.com

Information is believed to be accurate but not guaranteed.



*Call the
land man
today!*

TOM SMITH, ALC®, BROKER

Tom@TomSmithLand.com

601.898.2772 **office** | 601.454.9397 **cell**



Expect More. Get More.

TomSmithLandandHomes.com

Information is believed to be accurate but not guaranteed.



*Call the
land man
today!*

TOM SMITH, ALC®, BROKER

Tom@TomSmithLand.com

601.898.2772 **office** | 601.454.9397 **cell**



Expect More. Get More.

TomSmithLandandHomes.com

Information is believed to be accurate but not guaranteed.



Call the land man today!

TOM SMITH, ALC®, BROKER

Tom@TomSmithLand.com

601.898.2772 **office** | 601.454.9397 **cell**



Expect More. Get More.

TomSmithLandandHomes.com

Information is believed to be accurate but not guaranteed.



*Call the
land man
today!*

TOM SMITH, ALC®, BROKER

Tom@TomSmithLand.com

601.898.2772 **office** | 601.454.9397 **cell**

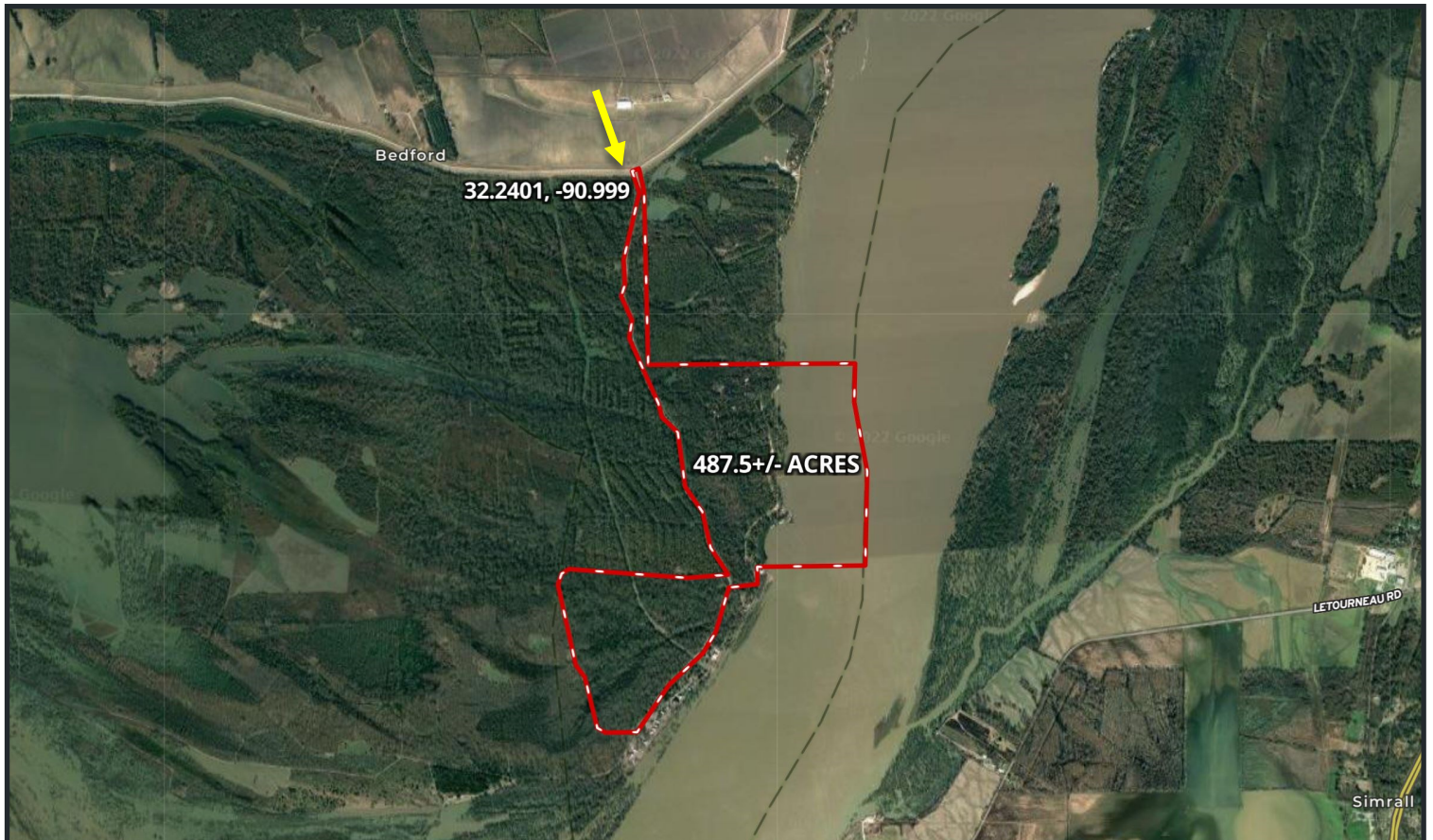


Expect More. Get More.

TomSmithLandandHomes.com

Information is believed to be accurate but not guaranteed.

AERIAL MAP



[CLICK HERE FOR AN INTERACTIVE MAP](#)

*Call the
land man
today!*

TOM SMITH, ALC®, BROKER

Tom@TomSmithLand.com

601.898.2772 **office** | 601.454.9397 **cell**

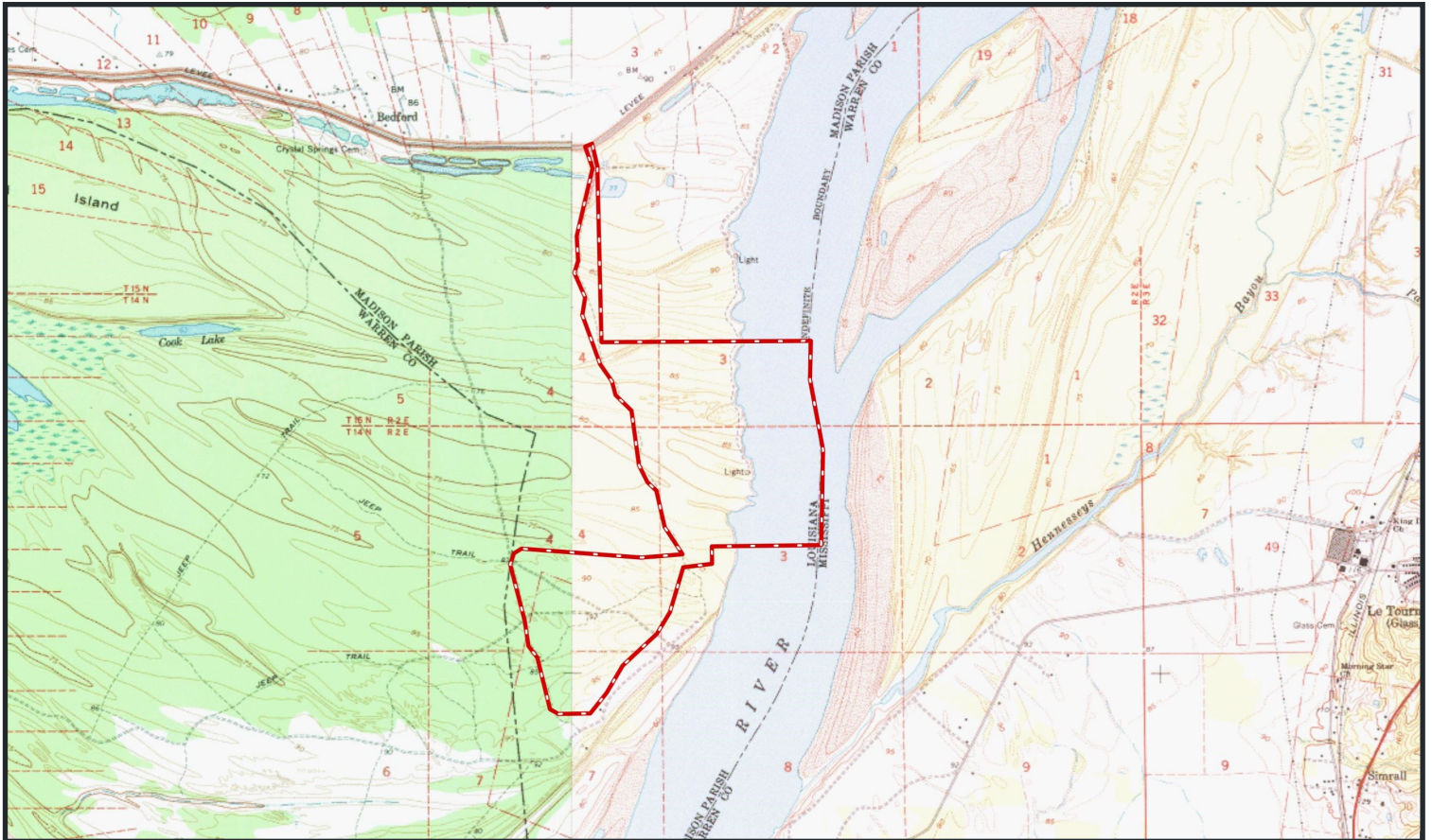


Expect More. Get More.

TomSmithLandandHomes.com

Information is believed to be accurate but not guaranteed.

TOPO MAP



*Call the
land man
today!*

TOM SMITH, ALC[®], BROKER

Tom@TomSmithLand.com

601.898.2772 **office** | 601.454.9397 **cell**

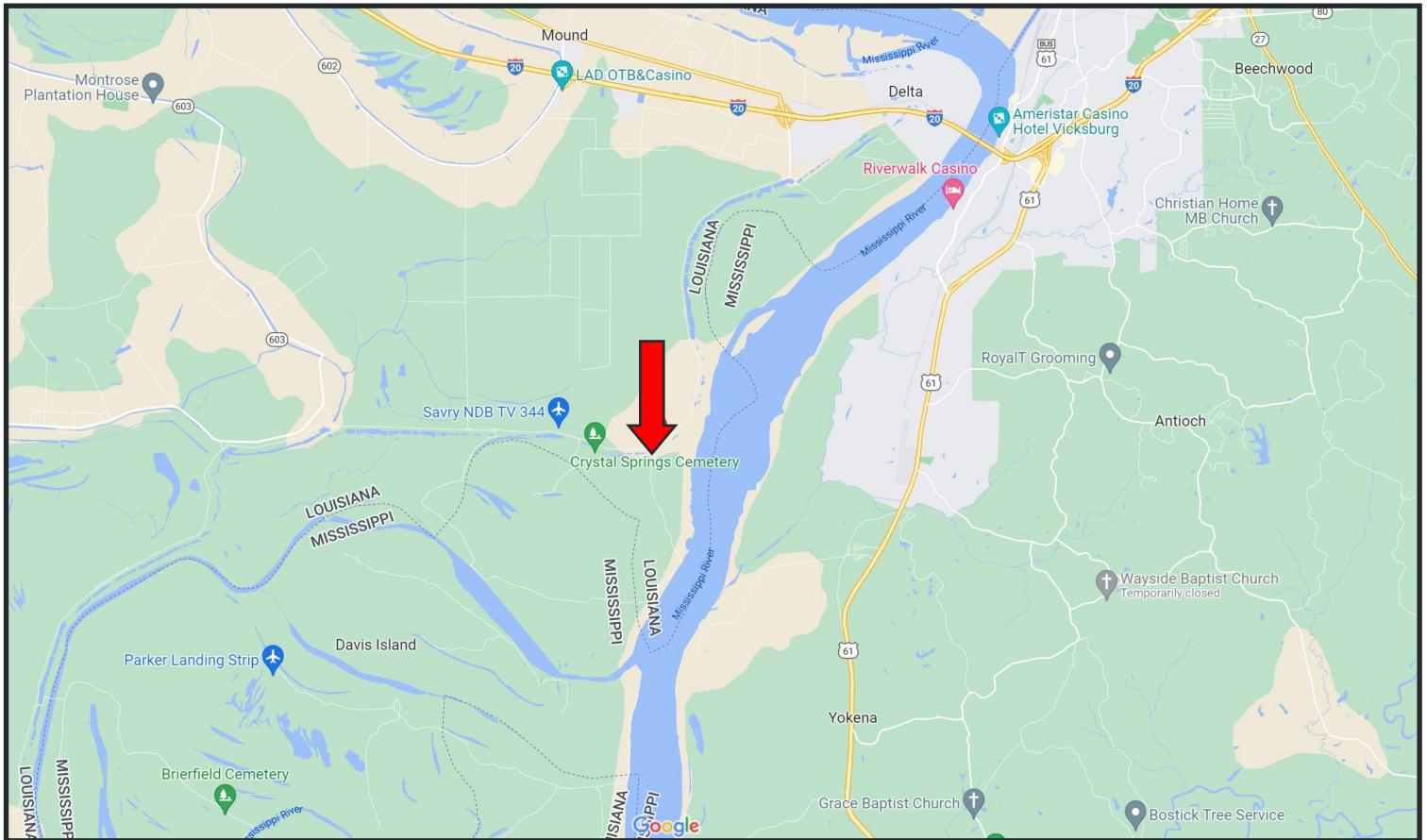


Expect More. Get More.

TomSmithLandandHomes.com

Information is believed to be accurate but not guaranteed.

DIRECTIONAL MAP



DIRECTIONS FROM I-20 AND HWY 80 IN DELTA, LA: Take exit 186 onto Hwy 80 for Delta, LA. Keep left at the fork and continue to Hwy 80 E. Turn right onto Hodge Rd. and travel 5.9 miles. The entrance to the property will be on your left.
[GOOGLE MAP LINK](#)



Call the land man today!

TOM SMITH, ALC®, BROKER
Tom@TomSmithLand.com
601.898.2772 **office** | 601.454.9397 **cell**



TomSmithLandandHomes.com

Information is believed to be accurate but not guaranteed.