

# MISSISSIPPI DELTA HOME

207 Percy Street Indianola, MS 38751



**\$459,900**

This classic Sunflower County, Mississippi Delta home is one of the first original homes built in Indianola, MS! Just under 1 acre in the middle of town, close to everything. The home features five bedrooms, 4.5 baths, and 4518 sq/ft, and it was built in 1904, beautifully renovated and remodeled with an up-to-date kitchen and bathrooms—Ready for your family to move in and stretch out in style in the Heart of the Delta. Give Emerson a call to schedule your showing of this MS Delta gem today!



2011-2022  
AMERICA'S  
**BEST**  
BROKERAGES



*Call me today!*

**EMERSON LOVELACE**, REALTOR®  
Emerson@TomSmithLand.com  
662.441.2500 office | 662.715.3302 cell



**TomSmithLandandHomes.com**

Information is believed to be accurate but not guaranteed.



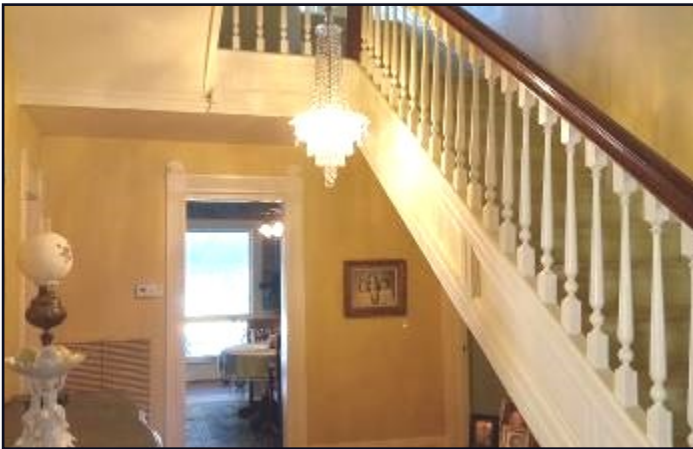
*Call me today!*

**EMERSON LOVELACE**, REALTOR®  
Emerson@TomSmithLand.com  
662.441.2500 **office** | 662.715.3302 **cell**



**TomSmithLandandHomes.com**

Information is believed to be accurate but not guaranteed.



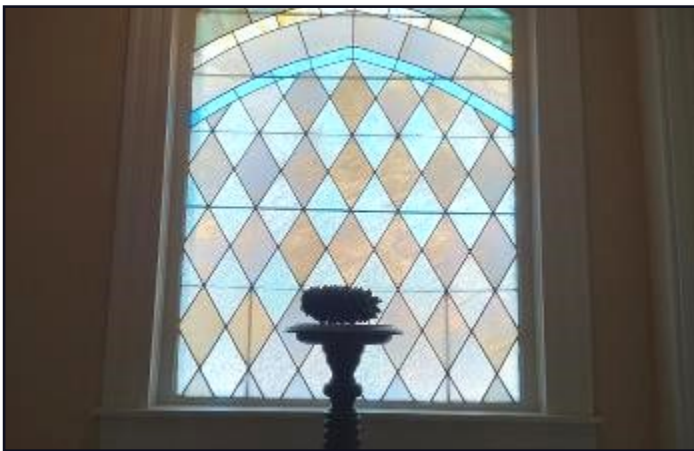
*Call me today!*

**EMERSON LOVELACE**, REALTOR®  
Emerson@TomSmithLand.com  
662.441.2500 **office** | 662.715.3302 **cell**



**TomSmithLandandHomes.com**

Information is believed to be accurate but not guaranteed.



*Call me today!*

**EMERSON LOVELACE**, REALTOR®  
Emerson@TomSmithLand.com  
662.441.2500 **office** | 662.715.3302 **cell**

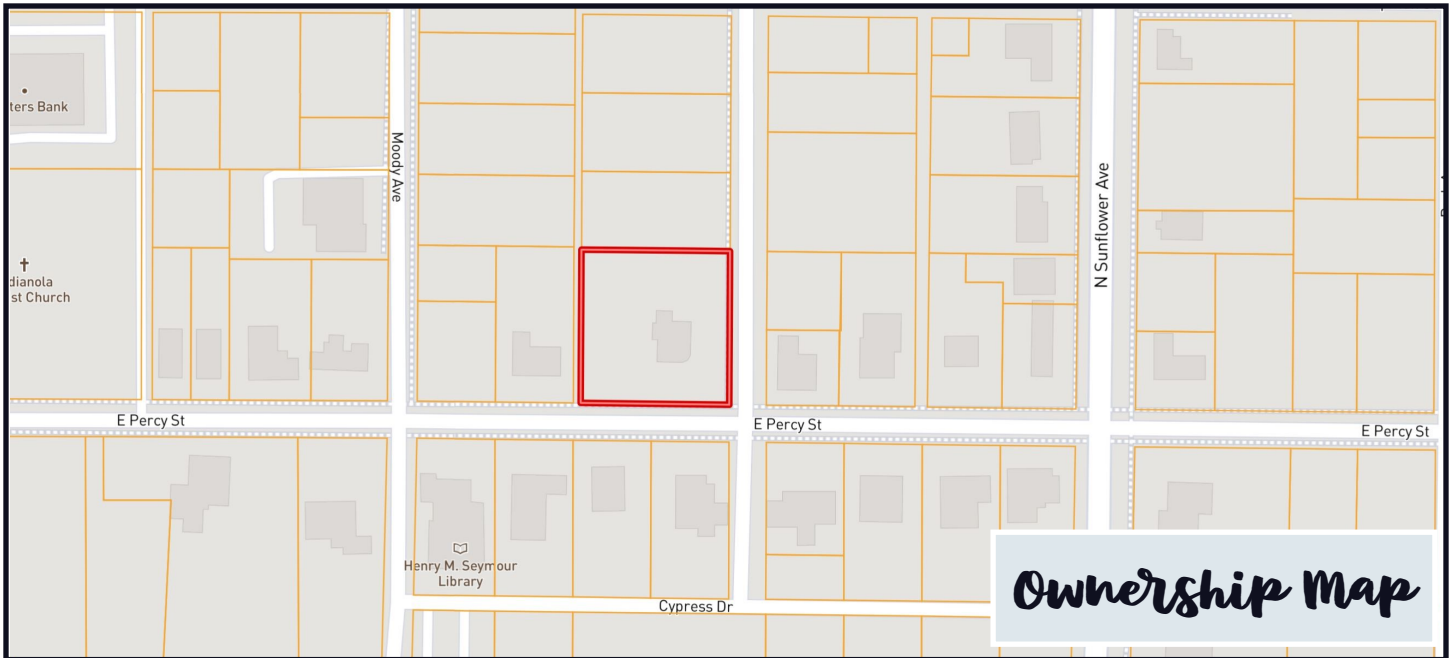


Expect More. Get More.



**TomSmithLandandHomes.com**

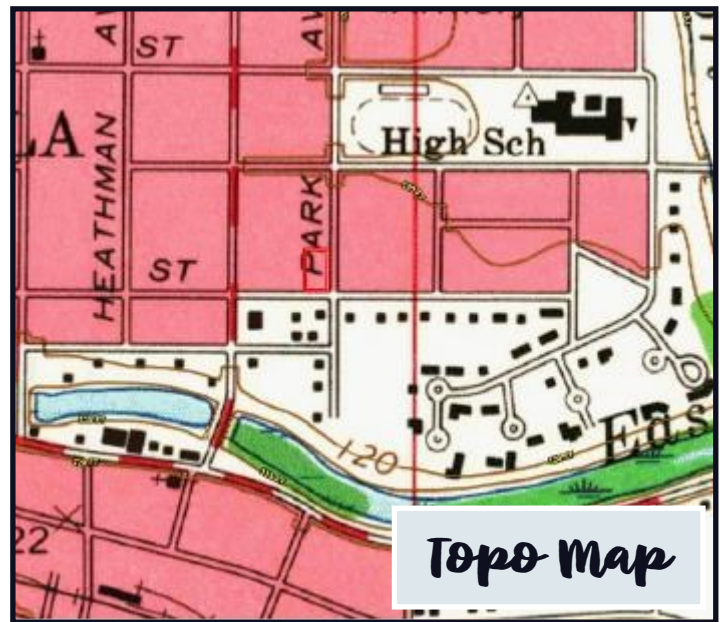
Information is believed to be accurate but not guaranteed.



Ownership Map



Aerial Map



Topo Map

[CLICK HERE FOR AN INTERACTIVE MAP](#)

*Call me today!*

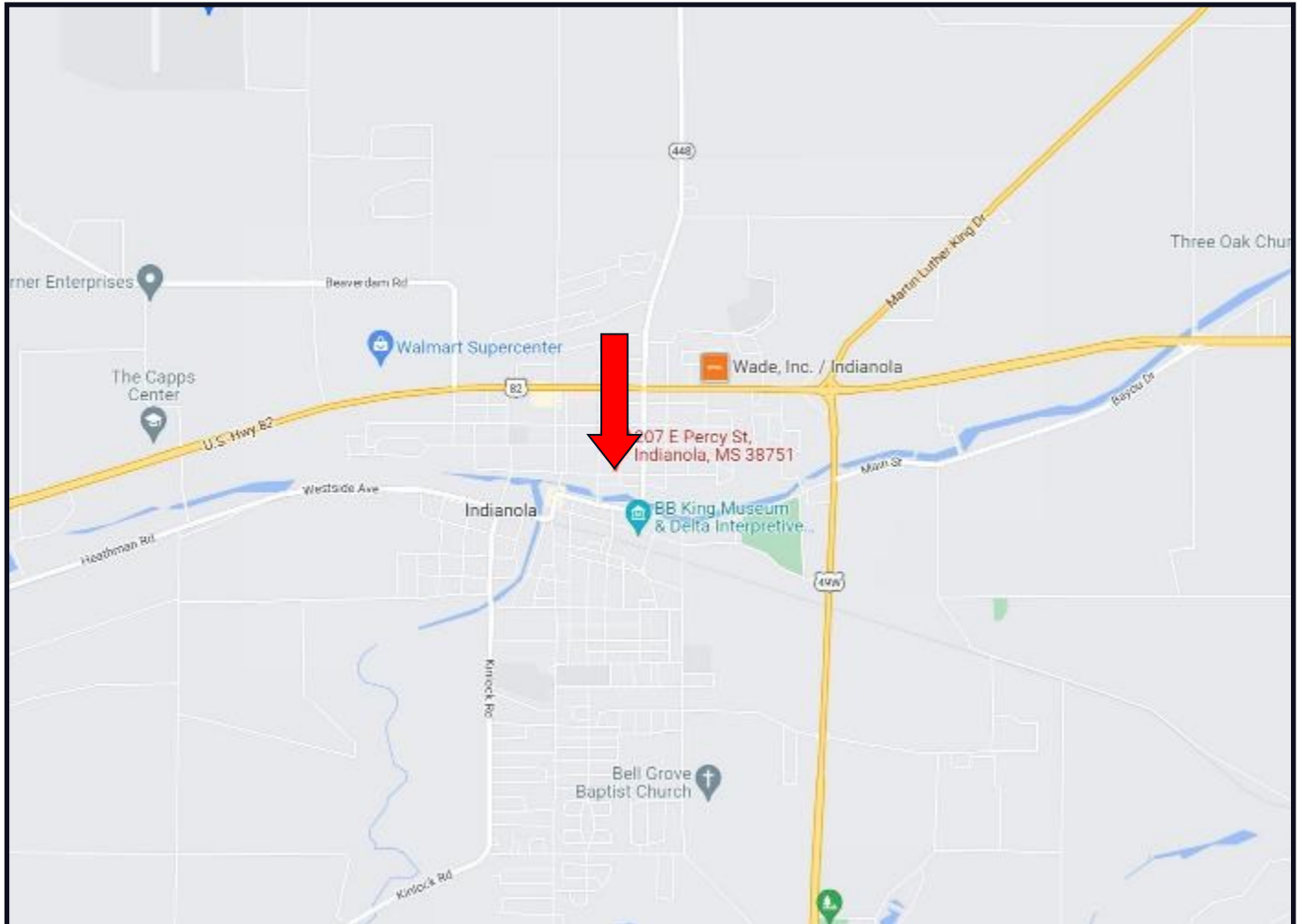
**EMERSON LOVELACE**, REALTOR®  
 Emerson@TomSmithLand.com  
 662.441.2500 office | 662.715.3302 cell



**TomSmithLandandHomes.com**

Information is believed to be accurate but not guaranteed.

# Directional Map



**DIRECTIONS FROM Hwy 49 and Hwy 82 in Indianola, MS:** Travel Hwy 82 for .7 miles. Turn left onto N Sunflower Avenue and travel .3 miles. Turn right on East Percy Street, after passing Heatherman Avenue the home will be the first home on the right. Click for Directions: [207 East Percy St. Indianola, MS 38751](#)



*Call me today!*

**EMERSON LOVELACE**, REALTOR®  
Emerson@TomSmithLand.com  
662.441.2500 office | 662.715.3302 cell



Expect More. Get More.

**TomSmithLandandHomes.com**

Information is believed to be accurate but not guaranteed.