

MISSISSIPPI DELTA HOME

207 Percy Street Indianola, MS 38751



\$373,500

This classic Sunflower County, Mississippi Delta home is one of the first original homes built in Indianola, MS! Just under 1 acre in the middle of town, close to everything. The home features five bedrooms, 4.5 baths, and 4518 sq/ft, and it was built in 1904, beautifully renovated and remodeled with an up-to-date kitchen and bathrooms—Ready for your family to move in and stretch out in style in the Heart of the Delta. Give Emerson a call to schedule your showing of this MS Delta gem today!



2011-2022
AMERICA'S
BEST
BROKERAGES



Call me today!

EMERSON LOVELACE, REALTOR®
Emerson@TomSmithLand.com
662.441.2500 office | 662.715.3302 cell



TomSmithLandandHomes.com

Information is believed to be accurate but not guaranteed.



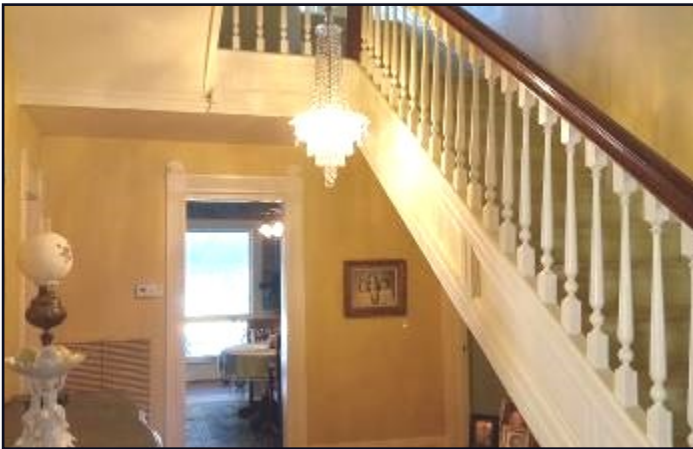
Call me today!

EMERSON LOVELACE, REALTOR®
Emerson@TomSmithLand.com
662.441.2500 **office** | 662.715.3302 **cell**



TomSmithLandandHomes.com

Information is believed to be accurate but not guaranteed.



Call me today!

EMERSON LOVELACE, REALTOR®
Emerson@TomSmithLand.com
662.441.2500 **office** | 662.715.3302 **cell**

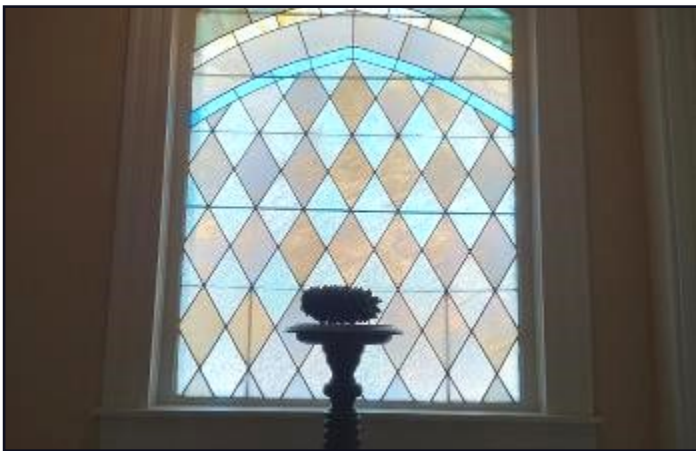


Expect More. Get More.



TomSmithLandandHomes.com

Information is believed to be accurate but not guaranteed.



Call me today!

EMERSON LOVELACE, REALTOR®
Emerson@TomSmithLand.com
662.441.2500 **office** | 662.715.3302 **cell**

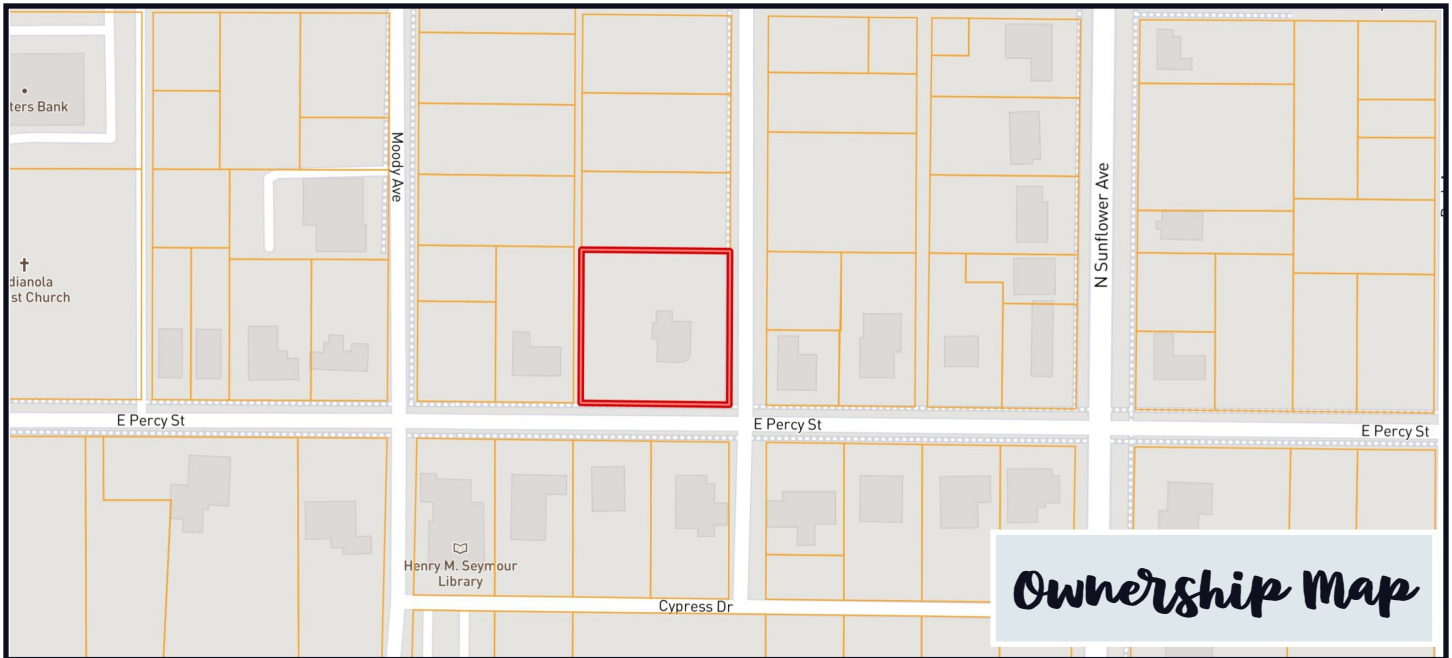


Expect More. Get More.

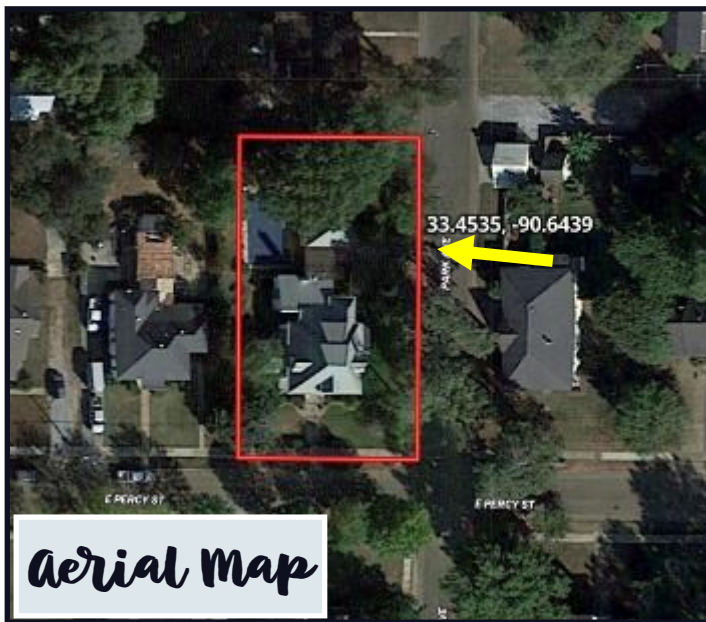


TomSmithLandandHomes.com

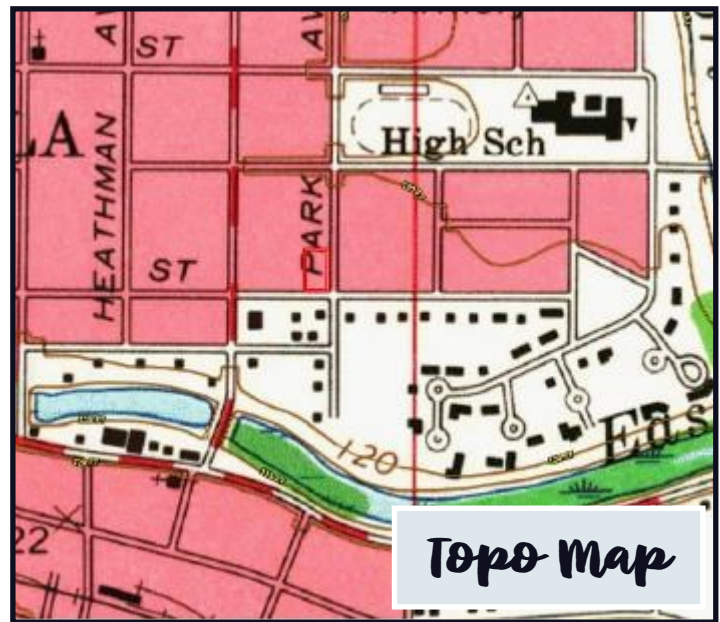
Information is believed to be accurate but not guaranteed.



Ownership Map



Aerial Map



Topo Map

CLICK HERE FOR AN INTERACTIVE MAP

Call me today!

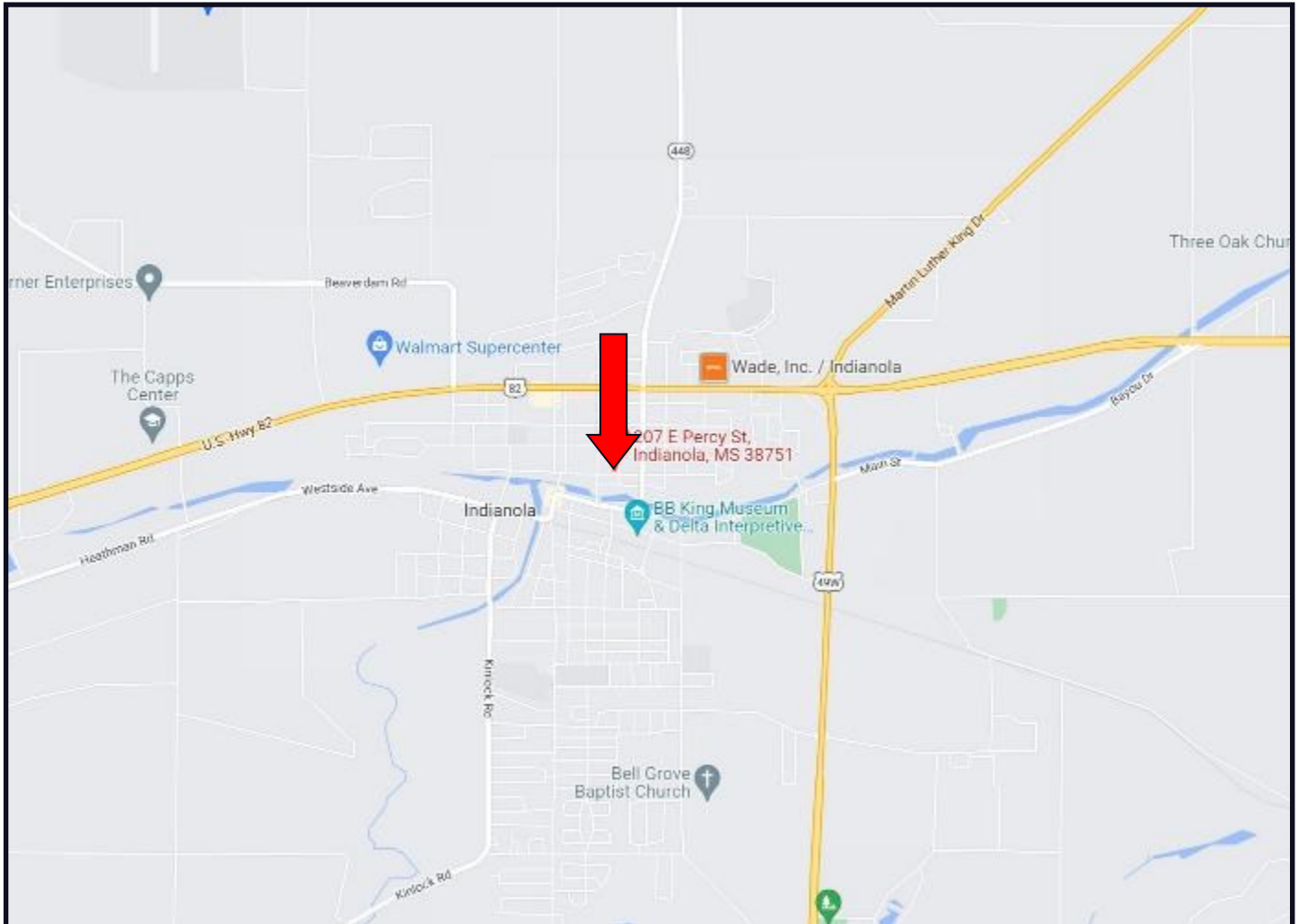
EMERSON LOVELACE, REALTOR®
 Emerson@TomSmithLand.com
 662.441.2500 office | 662.715.3302 cell



TomSmithLandandHomes.com

Information is believed to be accurate but not guaranteed.

Directional Map



DIRECTIONS FROM Hwy 49 and Hwy 82 in Indianola, MS: Travel Hwy 82 for .7 miles. Turn left onto N Sunflower Avenue and travel .3 miles. Turn right on East Percy Street, after passing Heatherman Avenue the home will be the first home on the right. Click for Directions: [207 East Percy St. Indianola, MS 38751](#)



2011-2022
AMERICA'S
BEST
BROKERAGES

Call me today!

EMERSON LOVELACE, REALTOR®
Emerson@TomSmithLand.com
662.441.2500 **office** | 662.715.3302 **cell**



TomSmithLandandHomes.com

Information is believed to be accurate but not guaranteed.