

1.82+/- Acre Home Site Pike County, MS



4156 Summit Holmesville Road McComb, MS 39648

This 1.82 +/- acre lot in Pike County, MS, is the perfect place to build a home. It is located in the highly coveted North Pike School District and is conveniently located just 15 minutes from the amenities of McComb. The property has paved road frontage on Summit Holmesville Road and gravel road frontage on Blue Ridge Lane. Utilities are available at the road. Covenants apply. Call Tara today to schedule a viewing!

Directions from I-55 in McComb, MS: Take exit 17 and travel east on Delaware Avenue. Travel for 1.1 miles and turn left onto W Michigan Avenue. Travel 0.3 miles and turn right onto N Broadway. Travel 0.2 miles and turn left onto MS-44 E/State Street. Travel 2.7 miles and turn right onto Summit Holmesville Road. The property will be on the right in 1.1 miles. Address: 4156 Summit Holmesville Road McComb, MS 39648



Call me today!

TARA WALKER SMITH, REALTOR®
Tara@TomSmithHomes.com
601.990.5070 office | 601.407.4315 cell



TomSmithLandandHomes.com

Information is believed to be accurate but not guaranteed.



Call me today!

TARA WALKER SMITH, REALTOR®
Tara@TomSmithHomes.com
601.990.5070 office | 601.407.4315 cell

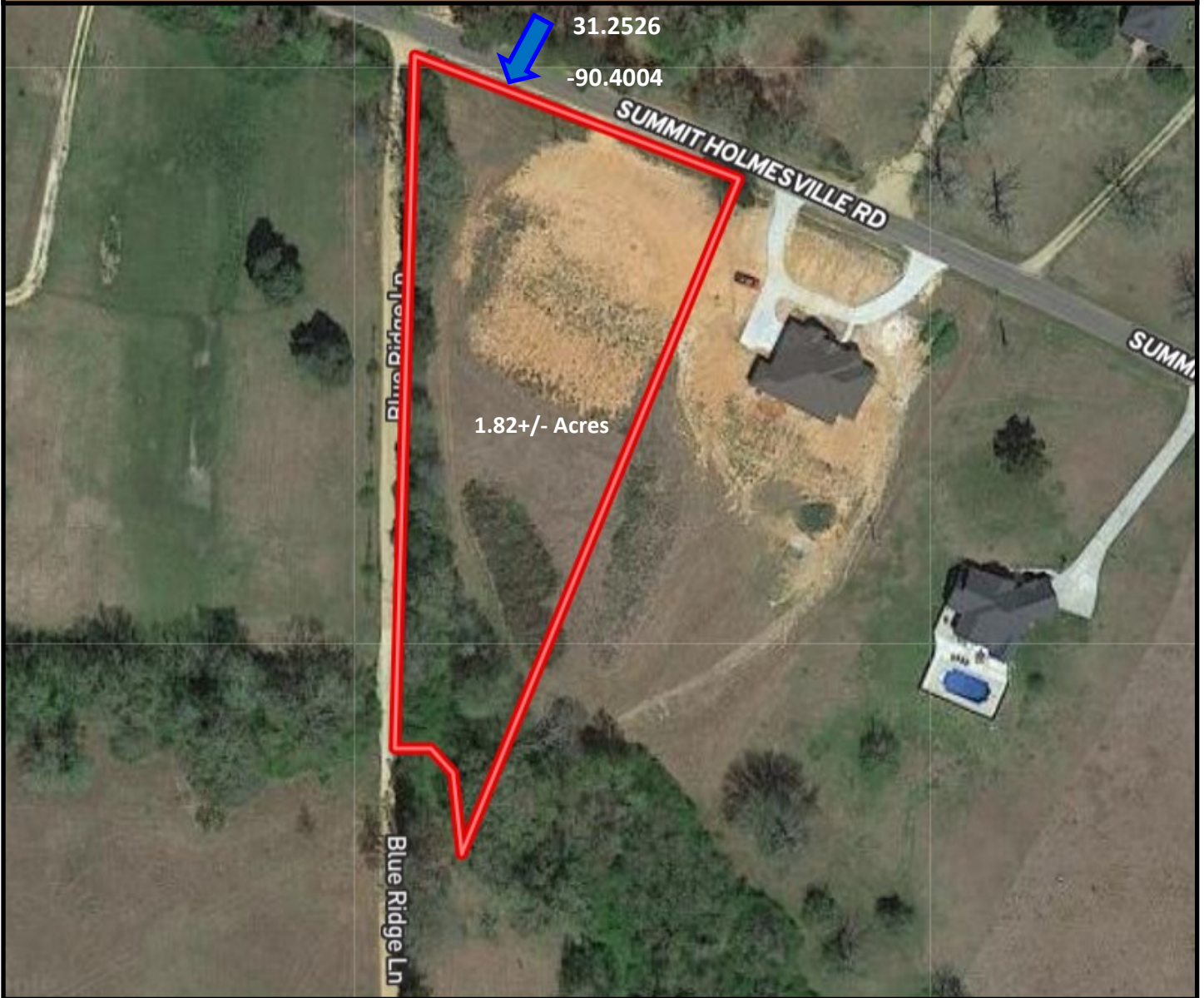


Expect More. Get More.

TomSmithLandandHomes.com

Information is believed to be accurate but not guaranteed.

Aerial Map



[Click for Interactive Map](#)



LandReport
2011-2022
AMERICA'S
BEST
BROKERAGES

Call me today!

TARA WALKER SMITH, REALTOR®
Tara@TomSmithHomes.com
601.990.5070 **office** | 601.407.4315 **cell**

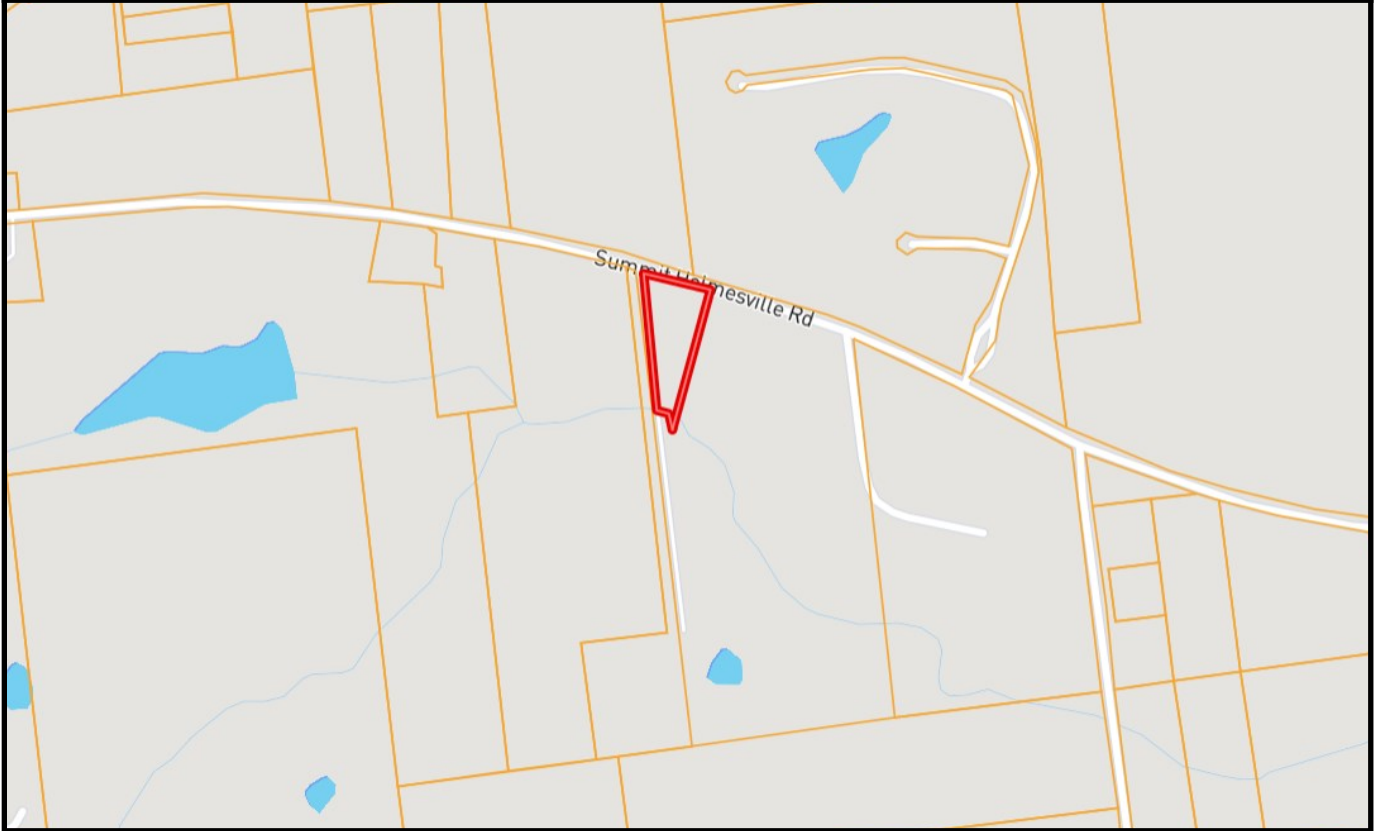


Expect More. Get More.

TomSmithLandandHomes.com

Information is believed to be accurate but not guaranteed.

Ownership Map



Call me today!

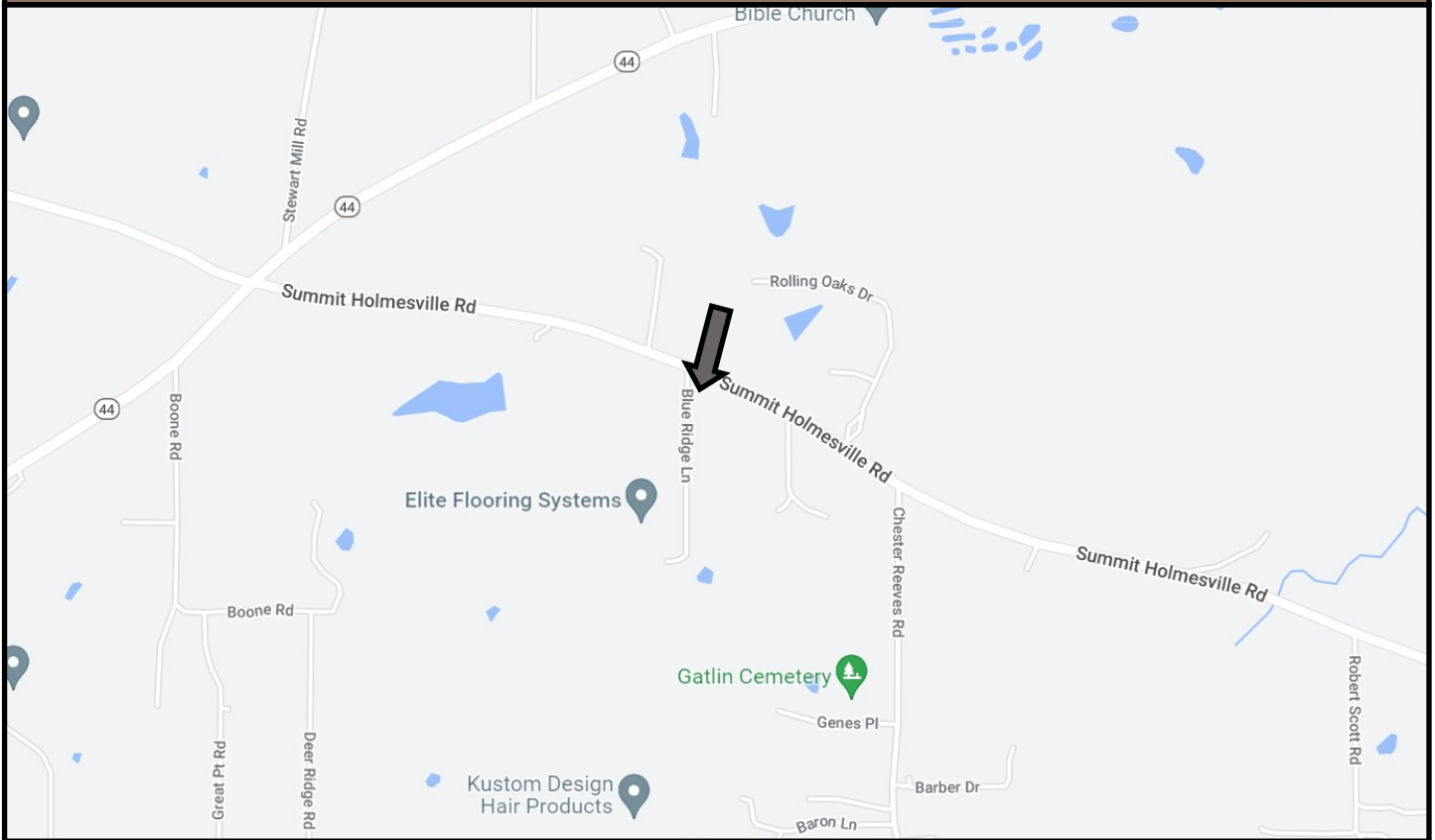
TARA WALKER SMITH, REALTOR®
Tara@TomSmithHomes.com
601.990.5070 **office** | 601.407.4315 **cell**



TomSmithLandandHomes.com

Information is believed to be accurate but not guaranteed.

Directional Map



Directions from I-55 in McComb, MS: Take exit 17 and travel east on Delaware Avenue. Travel for 1.1 miles and turn left onto W Michigan Avenue. Travel 0.3 miles and turn right onto N Broadway. Travel 0.2 miles and turn left onto MS-44 E/State Street. Travel 2.7 miles and turn right onto Summit Holmesville Road. The property will be on the right in 1.1 miles. Address: 4156 Summit Holmesville Road McComb, MS 39648

[Click here for Google Map](#)



Call me today!

TARA WALKER SMITH, REALTOR®
Tara@TomSmithHomes.com
601.990.5070 office | 601.407.4315 cell



TomSmithLandandHomes.com

Information is believed to be accurate but not guaranteed.