

6+/- Acres Homesite in Warren County , MS



3890 Duncan Road
Vicksburg, MS 39180

\$65,000

If you want to build your dream home, here are the perfect 6+/- acres in the Bovina Community in Warren County, MS. This wonderful property is the perfect place to create memories for a lifetime. The 6+/- acres provide ample space for a home, a large yard, and plenty of space for that mini farm you have always wanted. With beautiful trees lining the main road and another grove of large oaks in the middle of the property, plenty of homesites are available. Electricity is available at the road. There is even a great place to build a pond! Some Covenants apply, so call Clif Cannon today for more information

Directions from the Intersection of Interstate 20 and Tiffentown Road in Bovina, MS: Exit I-20 at exit 11 and travel south on Tiffentown Road for .3 miles. Turn left onto Bivina Drive and travel for .2 miles. Turn left onto Warriors Trail and travel for .3 miles. Continue straight onto Bovina Cutoff Road and travel for 3.5 miles. Turn left onto Duncan Road and travel .3 miles. The property will be on the left.

[Google Maps](#)

Call me today!

CLIF CANNON, REALTOR®
Clif@TomSmithLand.com
601.990.5070 office | 601.565.1070 cell



TomSmithLandandHomes.com

Information is believed to be accurate but not guaranteed.



Call me today!

CLIF CANNON, REALTOR®
Clif@TomSmithLand.com
601.990.5070 office | 601.565.1070 cell



TomSmithLandandHomes.com

Information is believed to be accurate but not guaranteed.

Aerial Map



[Interactive Map](#)

Call me today!

CLIF CANNON, REALTOR®
Clif@TomSmithLand.com
601.990.5070 office | 601.565.1070 cell



TomSmithLandandHomes.com

Information is believed to be accurate but not guaranteed.

Topographic Map



Call me today!

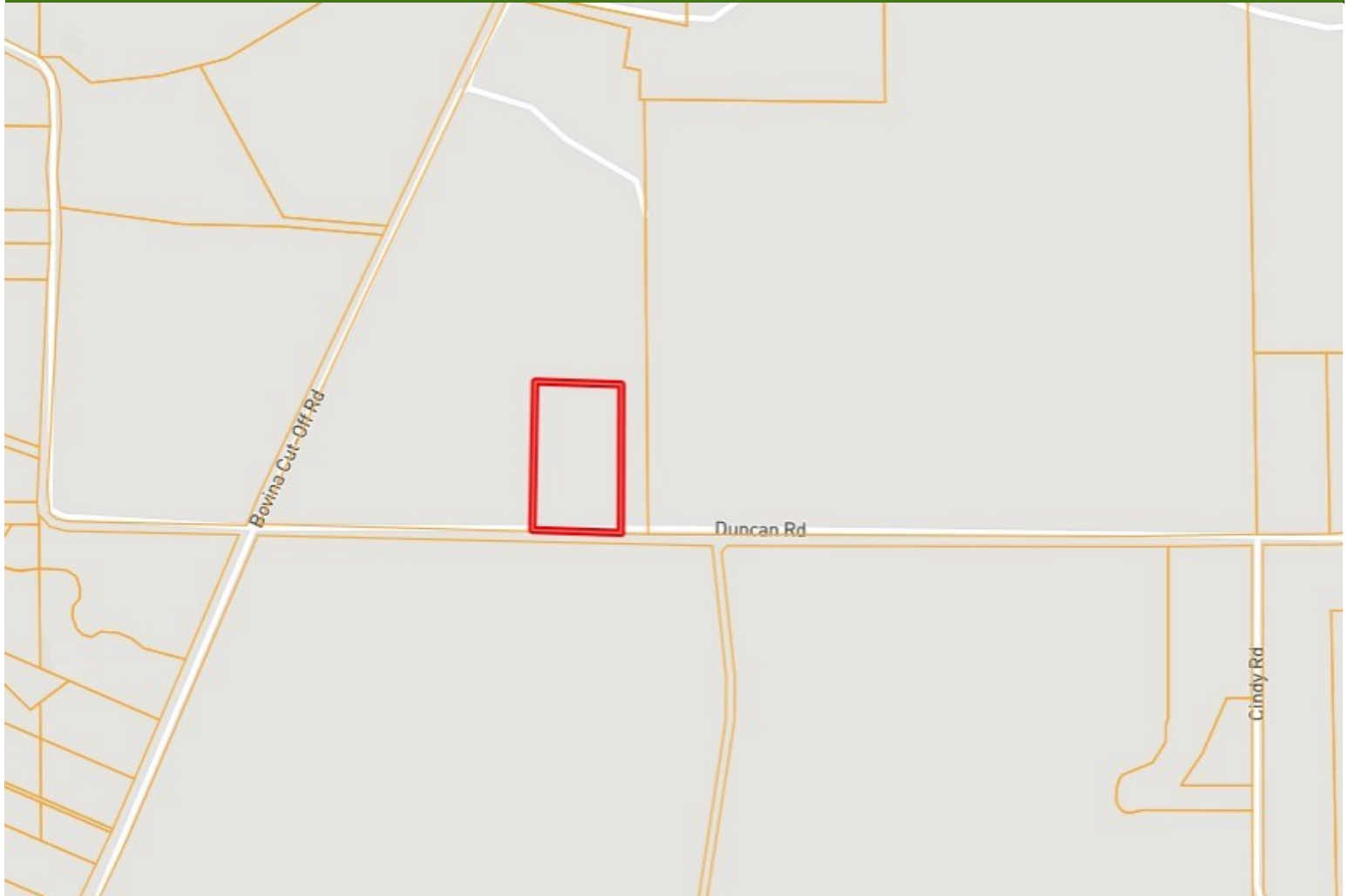
CLIF CANNON, REALTOR®
Clif@TomSmithLand.com
601.990.5070 office | 601.565.1070 cell



TomSmithLandandHomes.com

Information is believed to be accurate but not guaranteed.

Ownership Map



Call me today!

CLIF CANNON, REALTOR®
Clif@TomSmithLand.com
601.990.5070 **office** | 601.565.1070 **cell**



TomSmithLandandHomes.com

Information is believed to be accurate but not guaranteed.

Flood Map



Call me today!

CLIF CANNON, REALTOR®

Clif@TomSmithLand.com

601.990.5070 office | 601.565.1070 cell



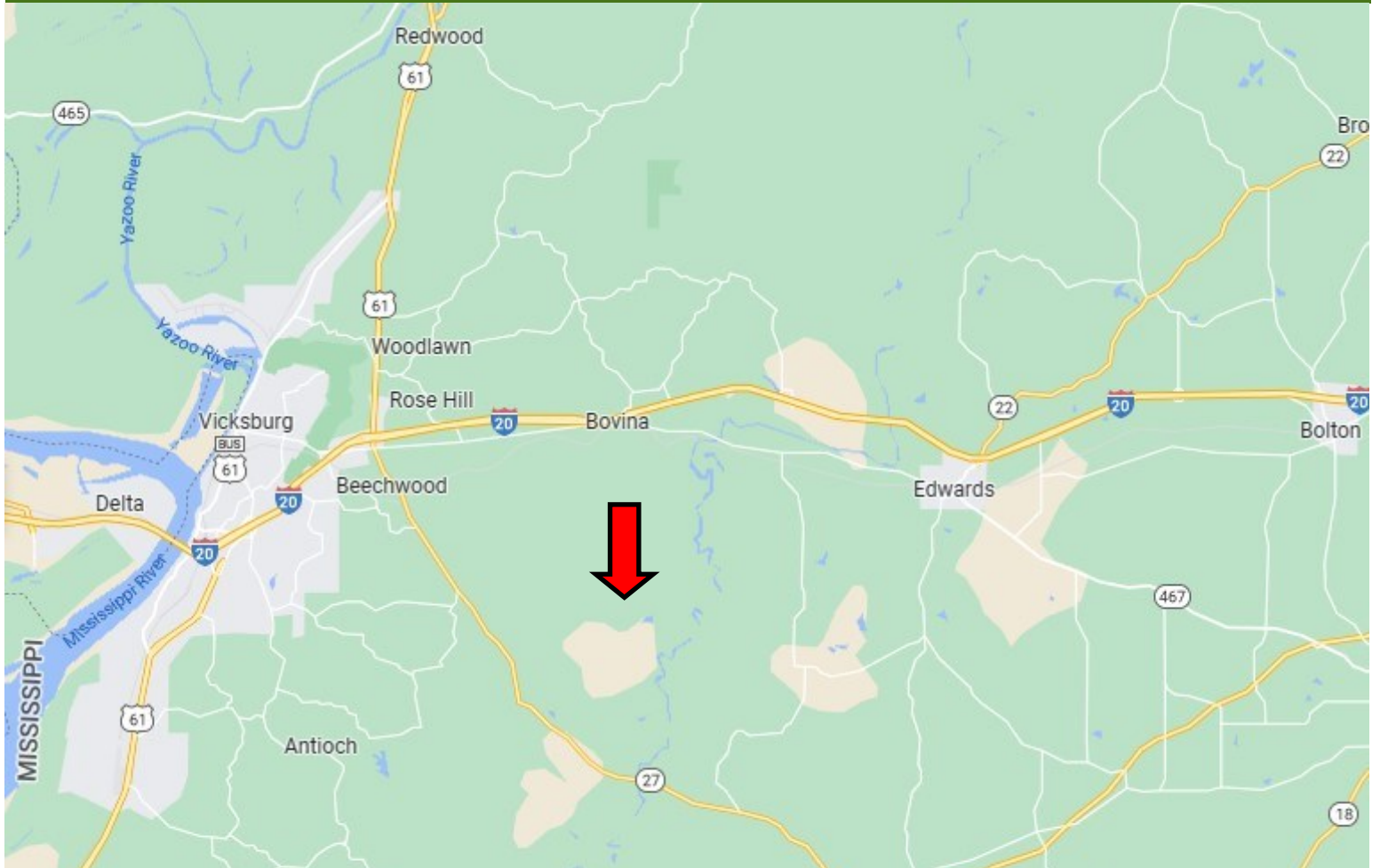
Expect More. Get More.



TomSmithLandandHomes.com

Information is believed to be accurate but not guaranteed.

Directional Map



[Google Maps](#)

Directions from Lorman, MS: Travel east on MS -552 for 3.4 miles. Turn left onto Woodvine Road and travel for 2.3 miles. Turn right on to Red Lick Road and travel for .6 miles. Turn left onto Tillman Chapel Road for 1.5 miles. The property will be on the left.

1481 Tillman Chapel Road
Lorman, MS 39096

Call me today!

CLIF CANNON, REALTOR®
Clif@TomSmithLand.com
601.990.5070 **office** | 601.565.1070 **cell**



TomSmithLandandHomes.com

Information is believed to be accurate but not guaranteed.