

# 76+/- Acre Tract In Tallahatchie County, MS



\$266,000

## Scallion Road Grenada, MS 38901

This 76+/- acre, partially cleared tract is perfectly situated just off Scallions Road and ready for multiple uses. Great deer and turkey hunting on this parcel and the perfect place to build your family cabin getaway in a beautiful private setting. A must see in a great location in Tallahatchie County, MS. Call Emerson today! (662)441-2500 or (662)715-3302

**Directions from the intersection of Hwy 8 and Hwy 51 in Grenada, MS:** Head North on Hwy 51 for 4.4 miles, turn left onto Pearidge Rd. Continue on Pearidge Rd for approximately 6.7 miles and turn right onto Mays Rd. In 2.2 miles the road makes a slight left and turns into Scallion Rd. The destination is on the left.



*Call me today!*

**EMERSON LOVELACE**, REALTOR®  
Emerson@TomSmithLand.com  
662.441.2500 office | 662.715.3302 cell



**TomSmithLandandHomes.com**

Information is believed to be accurate but not guaranteed.



*Call me today!*

**EMERSON LOVELACE**, REALTOR®  
Emerson@TomSmithLand.com  
662.441.2500 **office** | 662.715.3302 **cell**

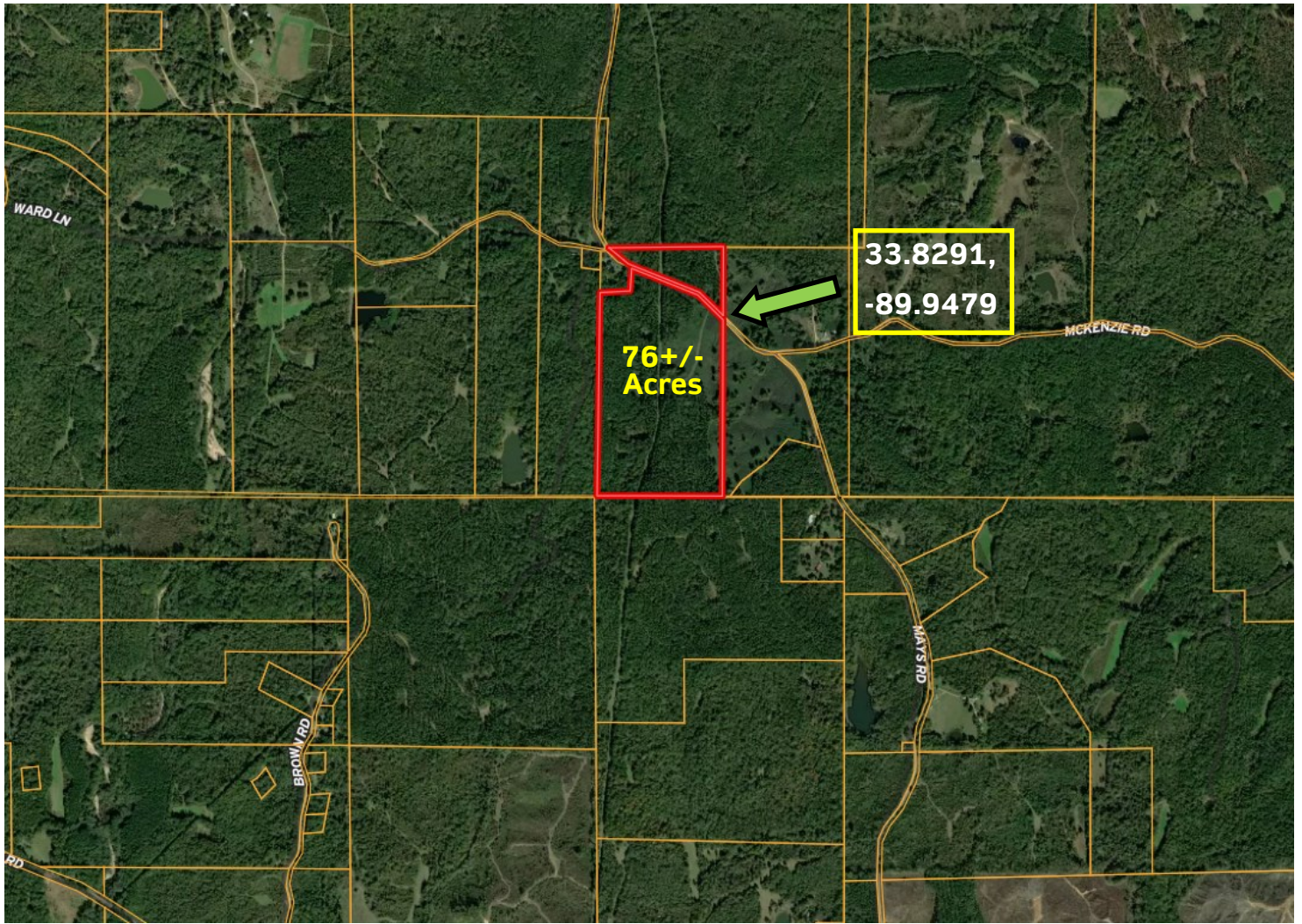


Expect More. Get More.

**TomSmithLandandHomes.com**

Information is believed to be accurate but not guaranteed.

# AERIAL MAP



[Click for Interactive Map](#)

*Call me today!*

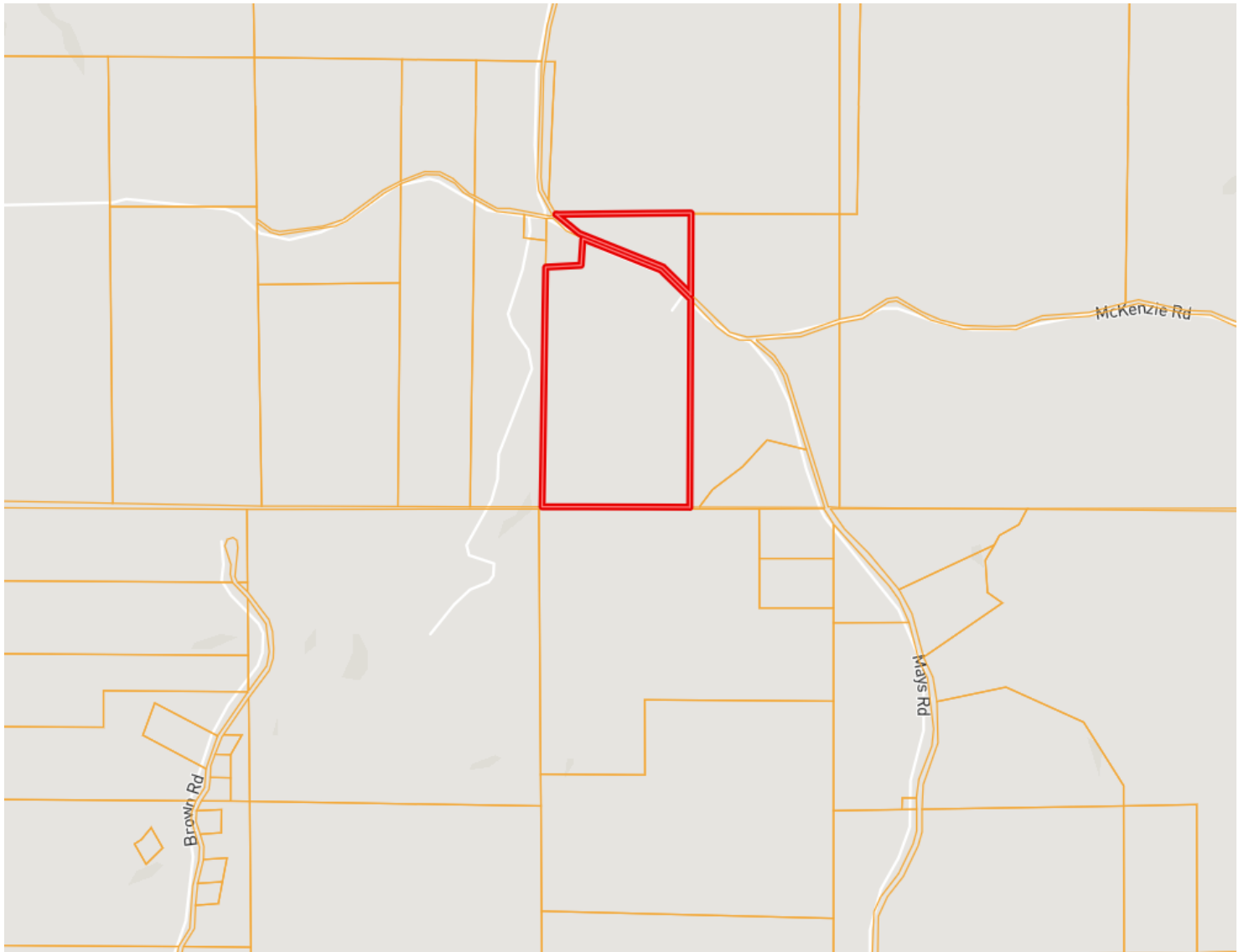
**EMERSON LOVELACE**, REALTOR®  
Emerson@TomSmithLand.com  
662.441.2500 **office** | 662.715.3302 **cell**



[TomSmithLandandHomes.com](http://TomSmithLandandHomes.com)

Information is believed to be accurate but not guaranteed.

# OWNERSHIP MAP



*Call me today!*

**EMERSON LOVELACE**, REALTOR<sup>®</sup>  
Emerson@TomSmithLand.com  
662.441.2500 **office** | 662.715.3302 **cell**



**TomSmithLandandHomes.com**

Information is believed to be accurate but not guaranteed.

# SOIL MAP



▣ All Polygons 76.02 ac

SOIL CODE	SOIL DESCRIPTION	ACRES	%	CPI	NCCPI	CAP
MeF3	Memphis silt loam, 17 to 40 percent slopes, severely eroded	26.57	34.95	0	18	7e
MeF	Memphis silt loam, 17 to 40 percent slopes	17.22	22.65	0	20	7e
MeD3	Memphis silt loam, 5 to 12 percent slopes, severely eroded	11.53	15.17	0	76	4e
Fa	Falaya silt loam	8.88	11.68	0	76	2w
GuF	Gullied land-Memphis complex, 8 to 40 percent slopes	7.79	10.25	0	1	7e
MeE3	Memphis silt loam, 12 to 17 percent slopes, severely eroded	2.63	3.46	0	71	6e
MeC2	Memphis silt loam, 5 to 8 percent slopes, eroded	0.65	0.85	0	82	3e
LoC2	Loring silt loam, 5 to 8 percent slopes, moderately eroded, central	0.53	0.7	0	47	4e
MgF	Memphis-Guin complex, 17 to 50 percent slopes (memphis, saffell)	0.18	0.24	0	16	7e
FI	Falaya silt loam, local alluvium	0.04	0.05	0	76	2w
TOTALS		76.02( )	100%	-	34.89	5.87

(\*) Total acres may differ in the second decimal compared to the sum of each acreage soil. This is due to a round error because we only show the acres of each soil with two decimal.

*Call me today!*

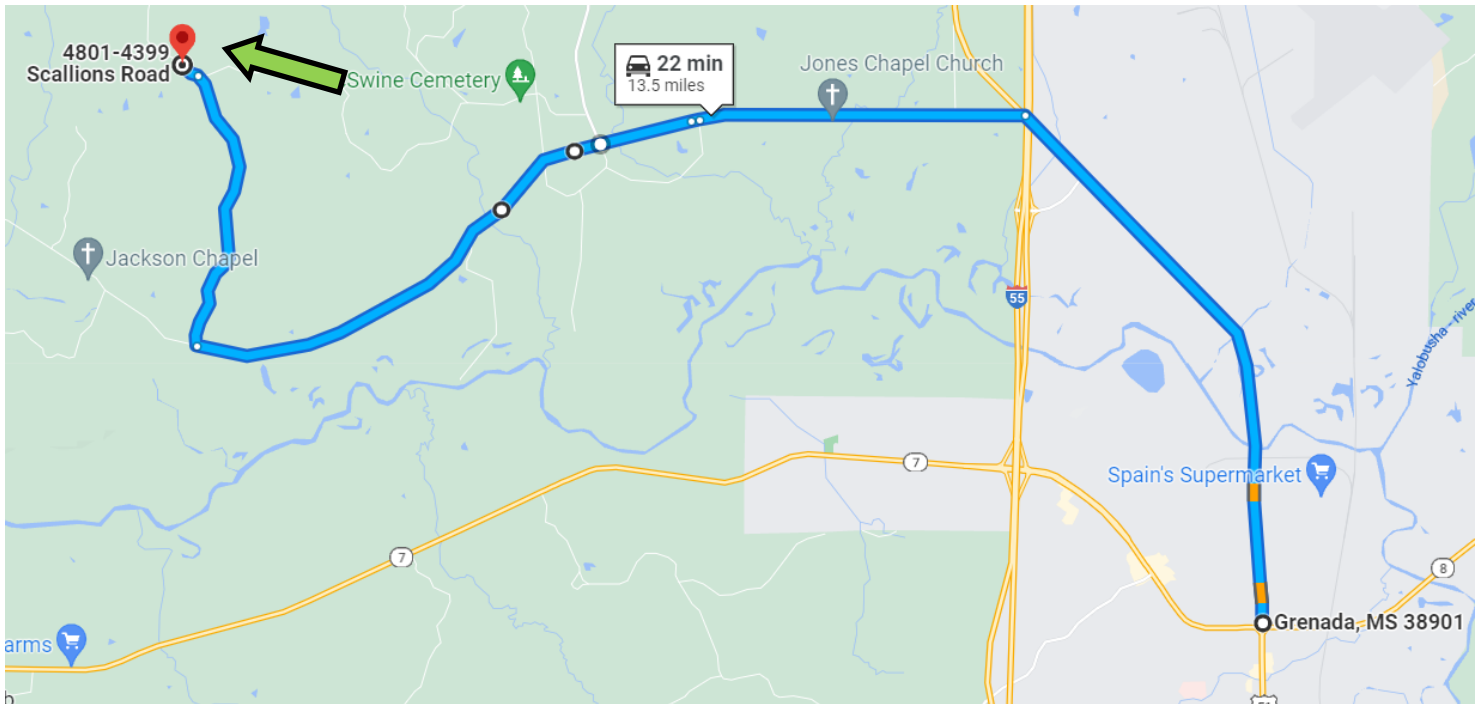
**EMERSON LOVELACE**, REALTOR®  
 Emerson@TomSmithLand.com  
 662.441.2500 **office** | 662.715.3302 **cell**



**TomSmithLandandHomes.com**

Information is believed to be accurate but not guaranteed.

# DIRECTIONAL MAP



**Address: Scallion Road Grenada, MS 38901**

**Directions from the intersection of Hwy 8 and Hwy 51 in Grenada, MS:** Travel North on Hwy 51 for 4.4 miles, turn left onto Pearidge Rd. Continue on Pearidge Rd for approximately 6.7 miles and turn right onto Mays Rd. In 2.2 miles the road makes a slight left and turns into Scallion Rd. The destination is on the left. [Click for Google Maps.](#)



*Call me today!*

**EMERSON LOVELACE**, REALTOR®  
Emerson@TomSmithLand.com  
662.441.2500 office | 662.715.3302 cell



**TomSmithLandandHomes.com**

Information is believed to be accurate but not guaranteed.