



0.19+/- ACRE RESIDENTIAL LOT IN RANKIN COUNTY, MS



\$10,000

Nelda Drive, Brandon, MS 39042

An undeveloped residential lot is available right off Nelda Drive in the subdivision of Shady Lake in Rankin County. Just far enough away to give you that rural feel while simultaneously being within Brandon's city limits. Contact your realtor today to schedule a showing!

Directions from Hwy 18 E: Head southeast on MS-18 E towards Sanctuary Dr. Turn Right onto Sanctuary Drive; Turn left onto Old Lake Rd. Take Holiday Road and Hilda Joy Drive to Nelda Drive. The property will be on your right. [GOOGLE MAP LINK](#)



LandReport
2011-2022
AMERICA'S
BEST
BROKERAGES

Call me today!

CLAY SIMMONS, REALTOR®
Clay@TomSmithHomes.com
601.898.2772 office | 601.672.6864 cell



TomSmithLandandHomes.com

Information is believed to be accurate but not guaranteed.

AERIAL MAP



INTERACTIVE AERIAL



Call me today!

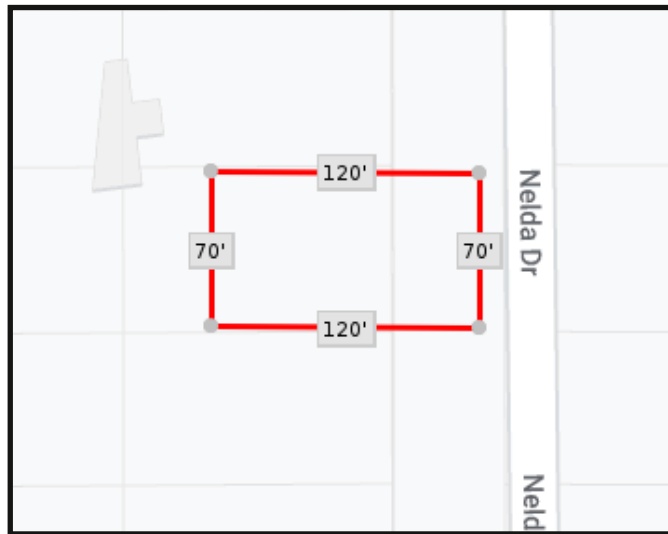
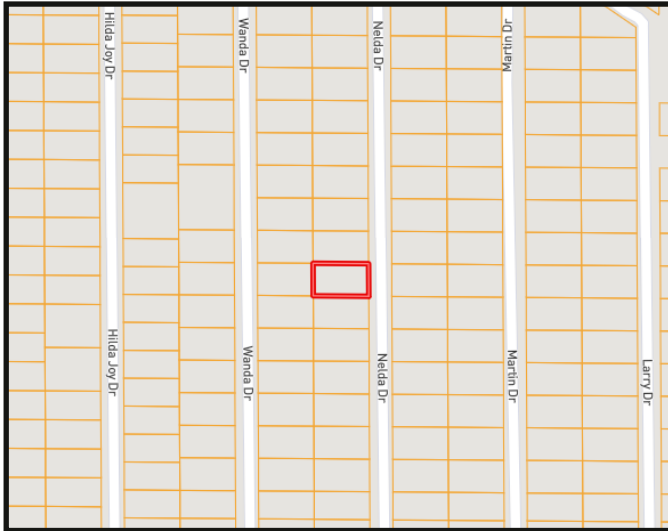
CLAY SIMMONS, REALTOR®
Clay@TomSmithHomes.com
601.898.2772 office | 601.672.6864 cell



TomSmithLandandHomes.com

Information is believed to be accurate but not guaranteed.

OWNERSHIP MAP



Call me today!

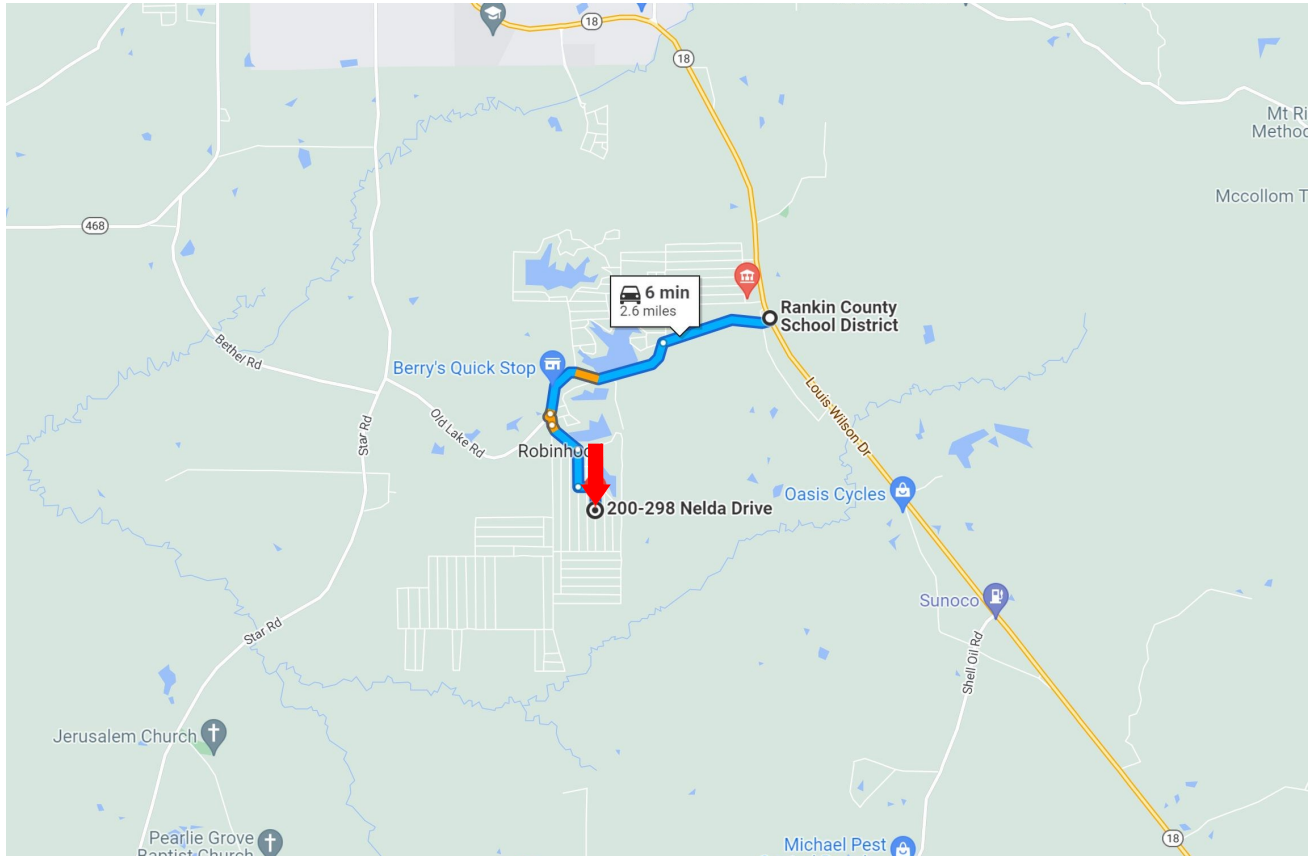
CLAY SIMMONS, REALTOR®
Clay@TomSmithHomes.com
601.898.2772 office | 601.672.6864 cell



TomSmithLandandHomes.com

Information is believed to be accurate but not guaranteed.

DIRECTIONAL MAP



Directions from Hwy 18 E: Head southeast on MS-18 E towards Sanctuary Dr. Turn Right onto Sanctuary Drive. Turn left onto Old Lake Rd. Take Holiday Road and Hilda Joy Drive to Nelda Drive. The property will be on your right. [GOOGLE MAP LINK](#)



Call me today!

CLAY SIMMONS, REALTOR®
Clay@TomSmithHomes.com
601.898.2772 **office** | 601.672.6864 **cell**



TomSmithLandandHomes.com

Information is believed to be accurate but not guaranteed.