

8.49± Acre Homesite in Clarke County, MS



\$30,000

Have you been searching for a great weekend getaway? Welcome to your new 8.49± acre homesite in Clarke County, MS! Situated just 10 minutes north of Quitman, MS, and 20 minutes west of the MS/AL State line. This 8.49± acre tract is an ideal spot! The property features a 0.5± acre cleared location ready for new construction, and the timber make-up is primarily mature pines, and several deer signs were noted during the initial inspection. The Clarkco State Park is conveniently yet unspoiled, only five minutes north of the property. Offering camping, cabin rentals, and water sports, the Clarkco State Park has been a favorite Mississippi recreation spot for years! Enjoy a beautiful sunrise from your front porch or a deer hunt from the back porch. There is county road frontage, water provided with harmony water association, and electricity with East Mississippi EBA. Call Kadero Edley today for your private showing!



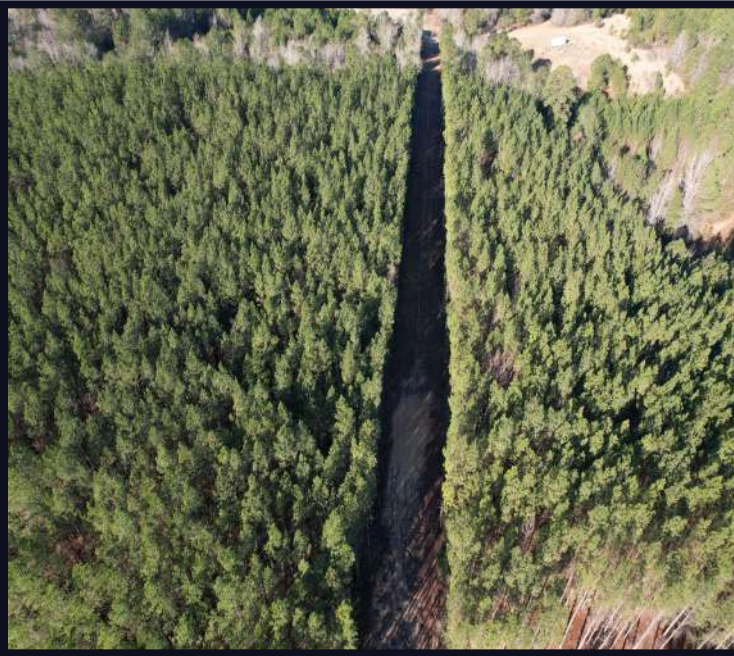
Call me today!

KADERO EDLEY, REALTOR®
Kadero@TomSmithLand.com
601.898.2772 office | 601.488.7000 cell



TomSmithLandandHomes.com

Information is believed to be accurate but not guaranteed.



Call me today!

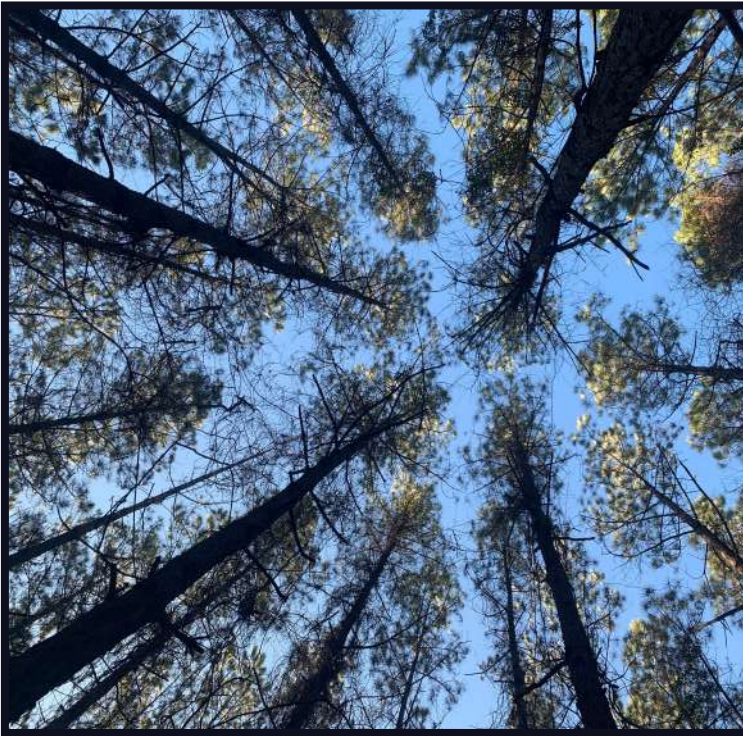
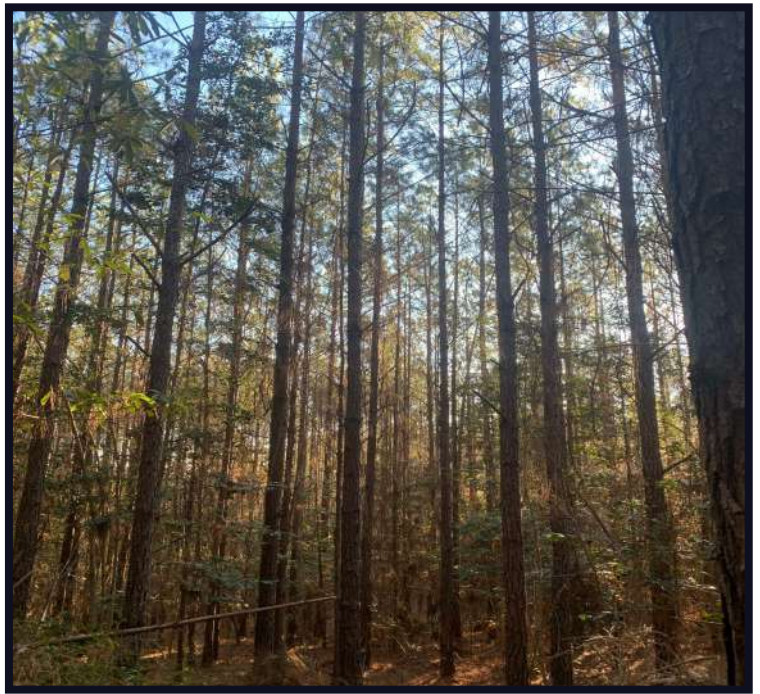
KADERO EDLEY, REALTOR®
Kadero@TomSmithLand.com
601.898.2772 **office** | 601.488.7000 **cell**



Expect More. Get More.

TomSmithLandandHomes.com

Information is believed to be accurate but not guaranteed.



Call me today!

KADERO EDLEY, REALTOR®
Kadero@TomSmithLand.com
601.898.2772 **office** | 601.488.7000 **cell**

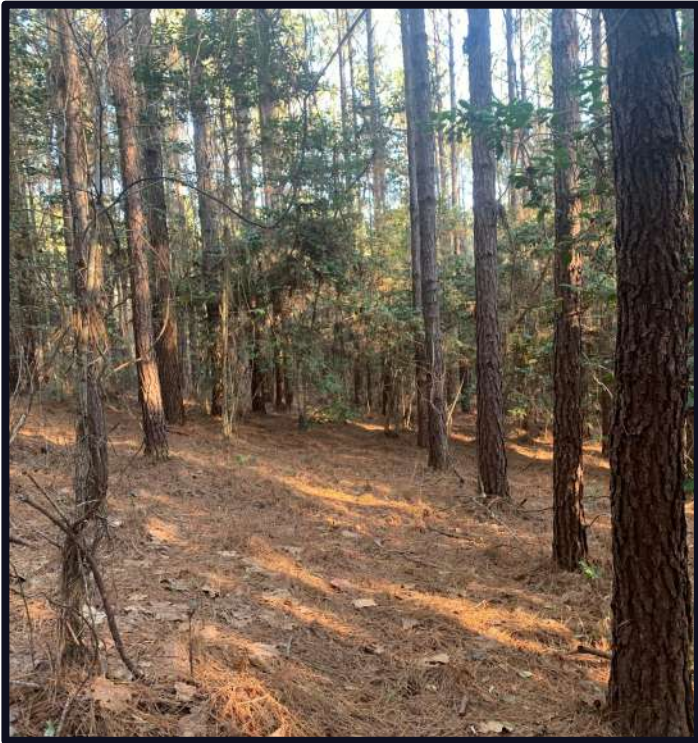
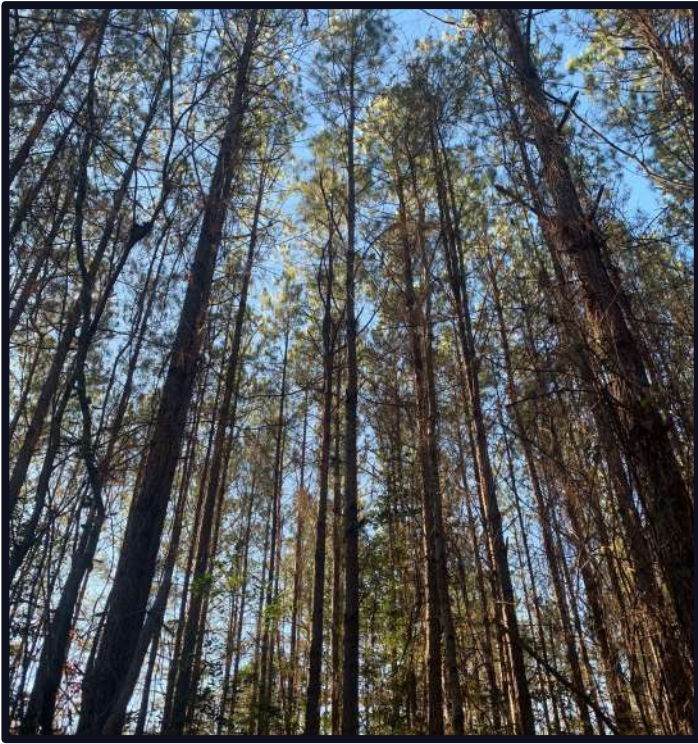


Expect More. Get More.



TomSmithLandandHomes.com

Information is believed to be accurate but not guaranteed.



Call me today!

KADERO EDLEY, REALTOR®
Kadero@TomSmithLand.com
601.898.2772 office | 601.488.7000 cell



Expect More. Get More.



TomSmithLandandHomes.com

Information is believed to be accurate but not guaranteed.

Aerial Map



[Click Here for Interactive Map](#)

Call me today!

KADERO EDLEY, REALTOR®
Kadero@TomSmithLand.com
601.898.2772 office | 601.488.7000 cell



Expect More. Get More.

TomSmithLandandHomes.com

Information is believed to be accurate but not guaranteed.

Ownership Map



*Call me
today!*

KADERO EDLEY, REALTOR®
Kadero@TomSmithLand.com
601.898.2772 **office** | 601.488.7000 **cell**

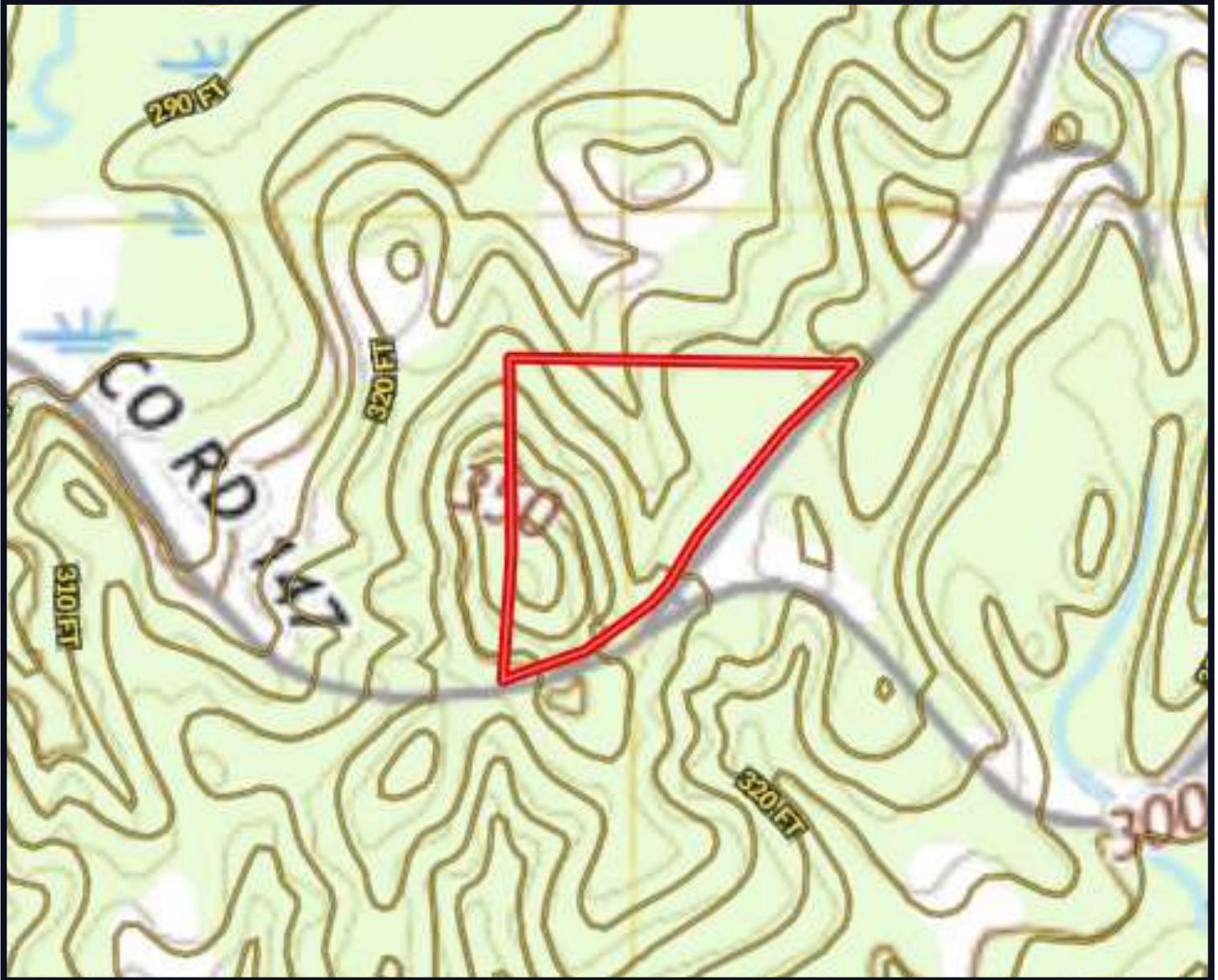


Expect More. Get More.

TomSmithLandandHomes.com

Information is believed to be accurate but not guaranteed.

Topographic Map



Call me today!

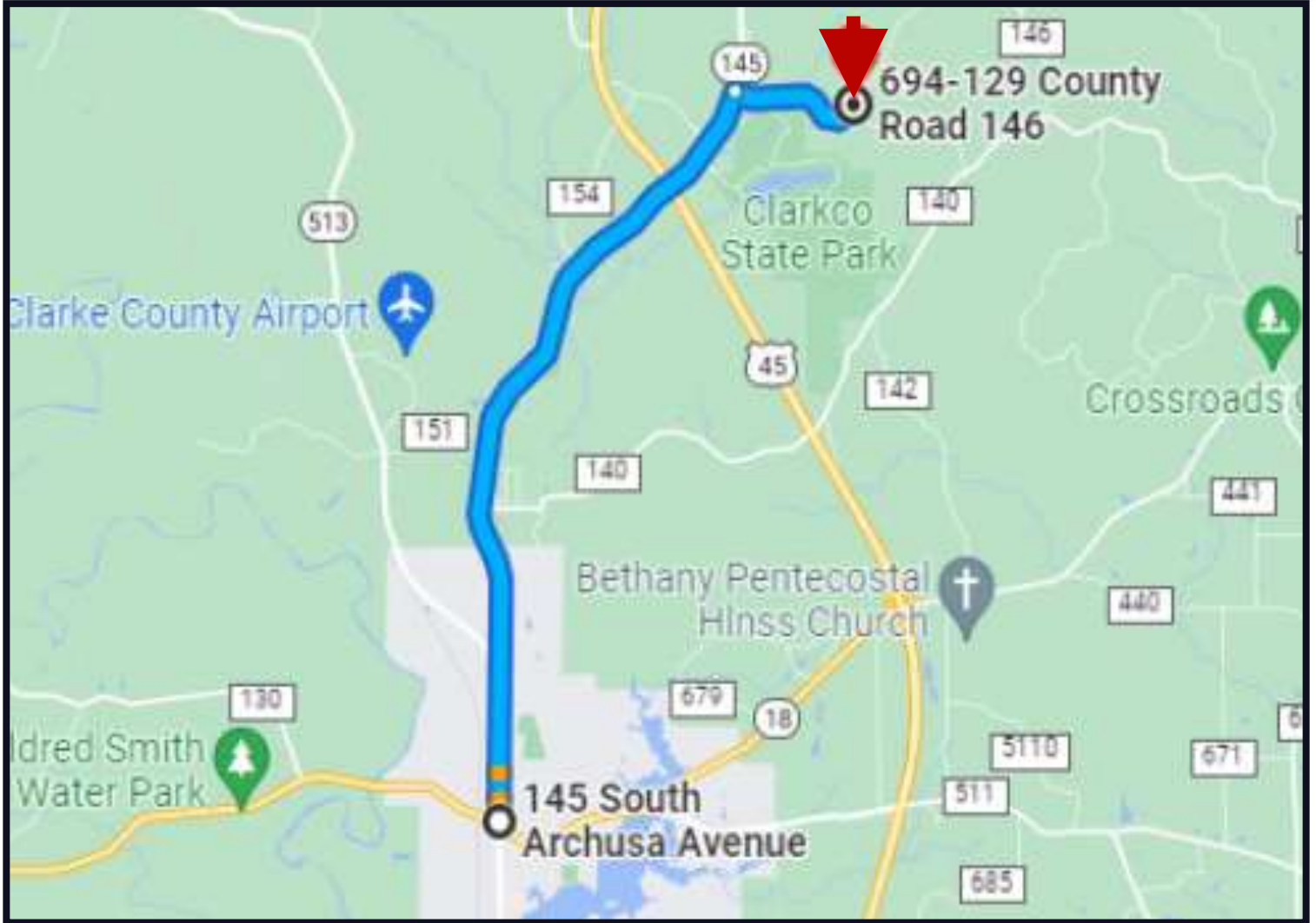
KADERO EDLEY, REALTOR®
Kadero@TomSmithLand.com
601.898.2772 office | 601.488.7000 cell



TomSmithLandandHomes.com

Information is believed to be accurate but not guaranteed.

Directional Map



Directions from Archusa Ave in Quitman, MS: Travel north on Archusa Ave for 5.7 miles. Turn right onto county road 147 for 0.9 miles. Continue onto county road 146 for 305 ft. and the property will be on your left.

[Google Maps Link](#)



Call me today!

KADERO EDLEY, REALTOR®
Kadero@TomSmithLand.com
601.898.2772 office | 601.488.7000 cell



TomSmithLandandHomes.com

Information is believed to be accurate but not guaranteed.