

Beautiful Home

Carroll County, MS



\$435,000

537 CR 216 Greenwood, MS 38930

Take a look at this beautiful 3,700 sq.ft., four bedroom three and a half bathroom home located right outside of Greenwood, Carroll County, MS. Situated on 2.26+/- acres, this home has a large front and back porch with in-ground swimming pool, deck for sunbathing and entertaining and large detached shop. The kitchen is equipped with all Viking appliances and granite countertops. This home also has a tankless hot water heater, sprinkler system, built-in vacuum cleaner system and generator hookups. Call Sarah Reese for your private showing today! (662)441-2500 or (662)641-6696.

Directions from the intersection of Hwy 82 and Hwy 49 Greenwood, MS: Travel East on Hwy 82 for approximately 8.8 miles. Take a sharp left onto Hwy 82 then turn right in 0.5 miles onto Miles Rd. The destination is on the left.



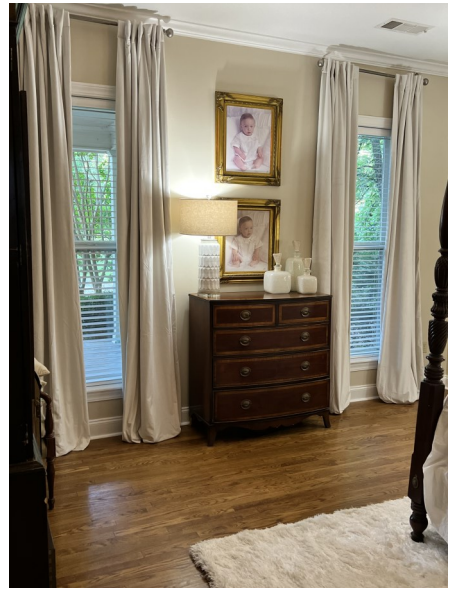
Call me today!

SARAH-REESE WRIGHT, REALTOR®
SarahReese@TomSmithLand.com
662.441.2500 office | 662.641.6696 cell



TomSmithLandandHomes.com

Information is believed to be accurate but not guaranteed.



Call me today!

SARAH-REESE WRIGHT, REALTOR®
 SarahReese@TomSmithLand.com
 662.441.2500 office | 662.641.6696 cell

Tom Smith
LAND AND HOMES
 Expect More. Get More.



TomSmithLandandHomes.com

Information is believed to be accurate but not guaranteed.

AERIAL MAP



[Click for Interactive Map](#)

Call me today!

SARAH-REESE WRIGHT, REALTOR®
SarahReese@TomSmithLand.com
662.441.2500 **office** | 662.641.6696 **cell**



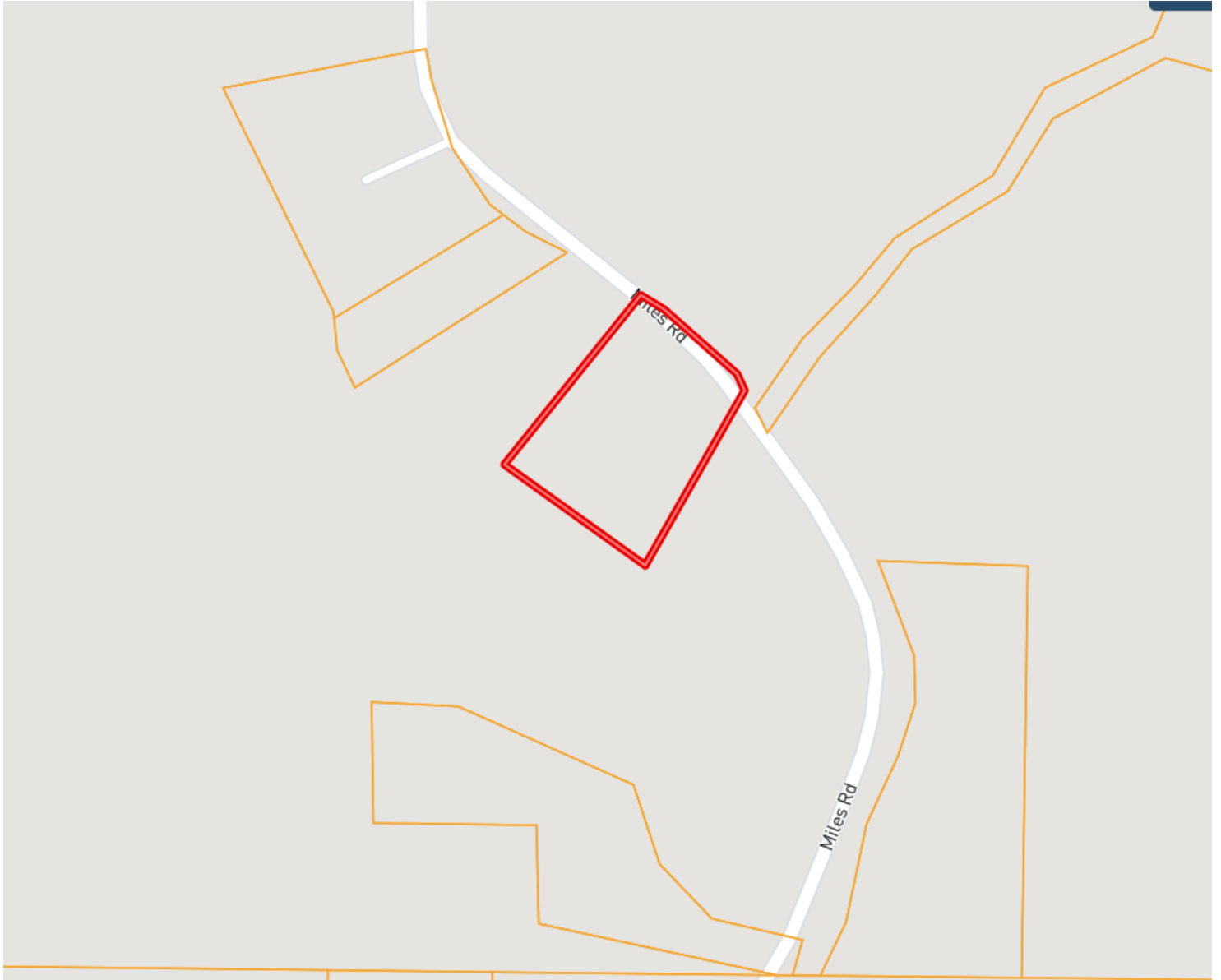
Expect More. Get More.



TomSmithLandandHomes.com

Information is believed to be accurate but not guaranteed.

OWNERSHIP MAP



*Call me
today!*

SARAH-REESE WRIGHT, REALTOR®
SarahReese@TomSmithLand.com
662.441.2500 **office** | 662.641.6696 **cell**



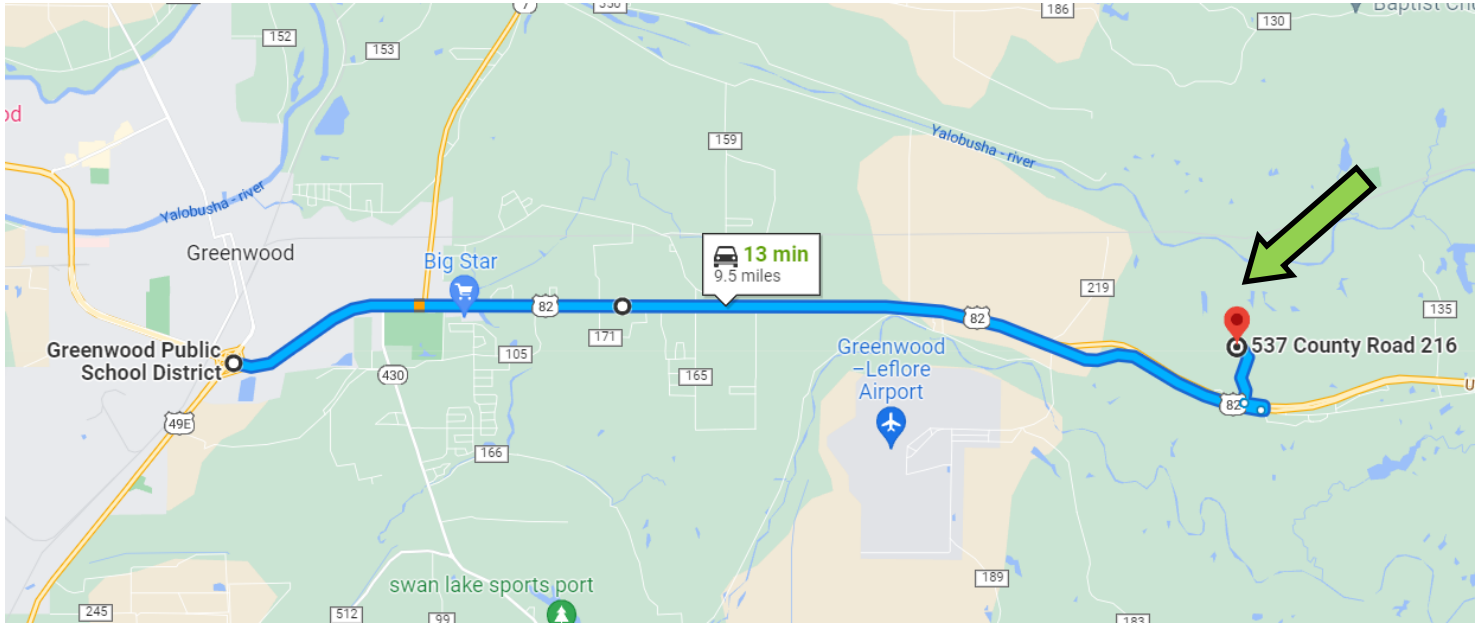
Expect More. Get More.



TomSmithLandandHomes.com

Information is believed to be accurate but not guaranteed.

DIRECTIONAL MAP



537 CR 216 Greenwood, MS 38930

Directions from the intersection of Hwy 82 and Hwy 49 Greenwood, MS:
Travel East on Hwy 82 for approximately 8.8 miles. Take a sharp left onto Hwy 82 then turn right in 0.5 miles onto Miles Rd. The destination is on the left.

[Click for Google Maps.](#)



Call me today!

SARAH-REESE WRIGHT, REALTOR®
SarahReese@TomSmithLand.com
662.441.2500 **office** | 662.641.6696 **cell**



TomSmithLandandHomes.com

Information is believed to be accurate but not guaranteed.