

# Mississippi Delta Farm Land

148± ACRES IN SHARKEY COUNTY, MS



Directions From Hwy 14 and Hwy 149 in Midnight, MS: Travel Hwy 14 for 4.5 miles. Turn right onto Alligator Lake Road. The property will be on your right. [GOOGLE MAP LINK](#)



*Call me today!*

**BRUCE WEST, REALTOR®**  
Bruce@TomSmithLand.com  
662.441.2500 **office** | 662.873.3007 **cell**



[TomSmithLandandHomes.com](http://TomSmithLandandHomes.com)

Information is believed to be accurate but not guaranteed.



Have you been looking to invest in farmland in the Mississippi delta? Take advantage of this 148± acre tract in Sharkey County, MS. The land consists of 128± acres of cultivatable land, and the property has had soybeans, corn, and cotton planted by the previous owner. The soil is mixed, with 20± acres being land formed. This property has excellent yield potential. There are 20 acres in an abandoned fish pond that could be easily turned into a duck hole or put back into row crop production. The property is easily accessed by Alligator Lake Road. The current owner is requesting to lease the property and continue farming this land.



*Call me today!*

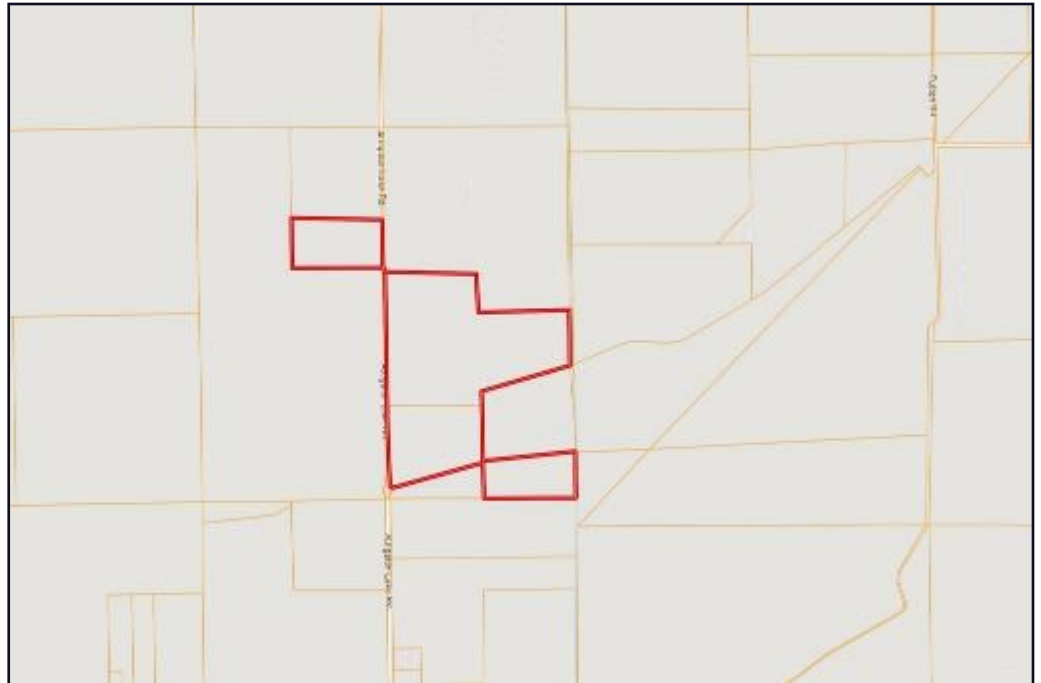
**BRUCE WEST**, REALTOR\*  
Bruce@TomSmithLand.com  
662.441.2500 **office** | 662.873.3007 **cell**



**TomSmithLandandHomes.com**

Information is believed to be accurate but not guaranteed.

# Ownership Map



[CLICK HERE FOR AN INTERACTIVE MAP](#)

# Aerial Map



*Call me today!*

**BRUCE WEST**, REALTOR\*  
Bruce@TomSmithLand.com  
662.441.2500 office | 662.873.3007 cell

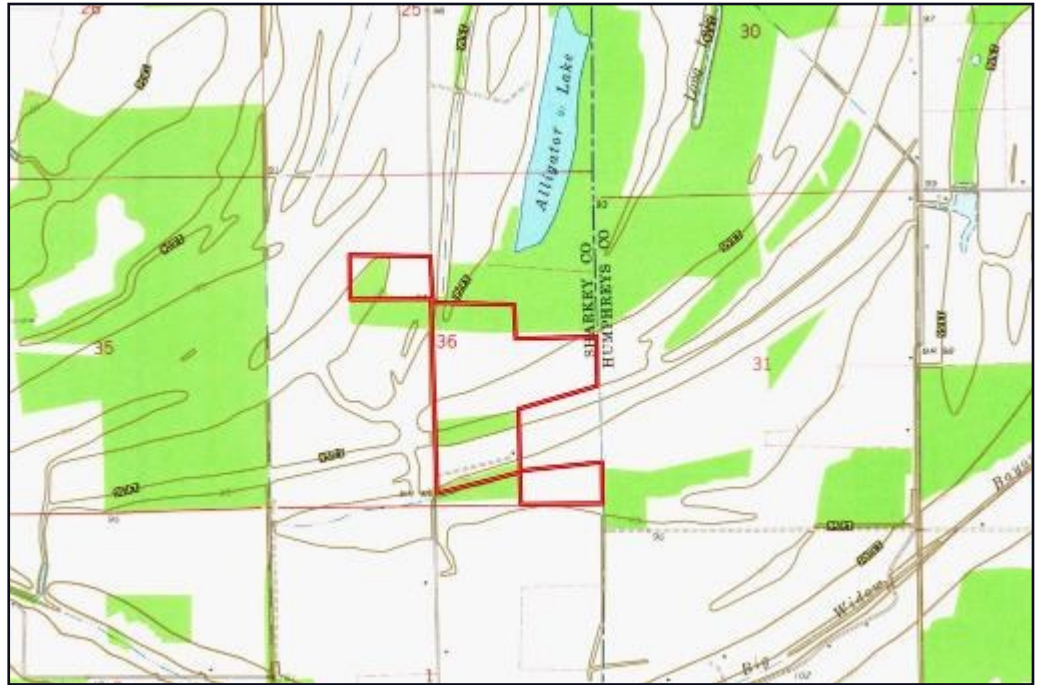


**TomSmithLandandHomes.com**

Information is believed to be accurate but not guaranteed.



# Topography Map



# Soil Map



SOIL CODE	SOIL DESCRIPTION	ACRES	%	DP	NCCP	CAP
Da	Dowling clay, frequently flooded (sharkey)	61.57	40.46	0	17	5w
Ac	Alligator clay, 0 to 2 percent slopes, frequently flooded	50.01	32.87	0	17	3e
Ab	Alligator clay, 0.5 to 2 percent slopes, occasionally flooded	20.12	13.22	0	49	3c
Fd	Forestdale silty clay loam, 0 to 2 percent slopes	8.8	5.78	0	65	3w
W	Water	8.4	5.52	0	-	-
Ae	Alligator silty clay loam, 0 to 2 percent slopes	2.36	1.55	0	49	3e
Sr	Sharkey, Alligator, and Dowling soils, frequently flooded (sharkey, alligator, sharkey)	0.85	0.56	0	19	5w
Db	Dowling clay, frequently flooded (alligator)	0.05	0.03	0	30	3e

*Call me today!*

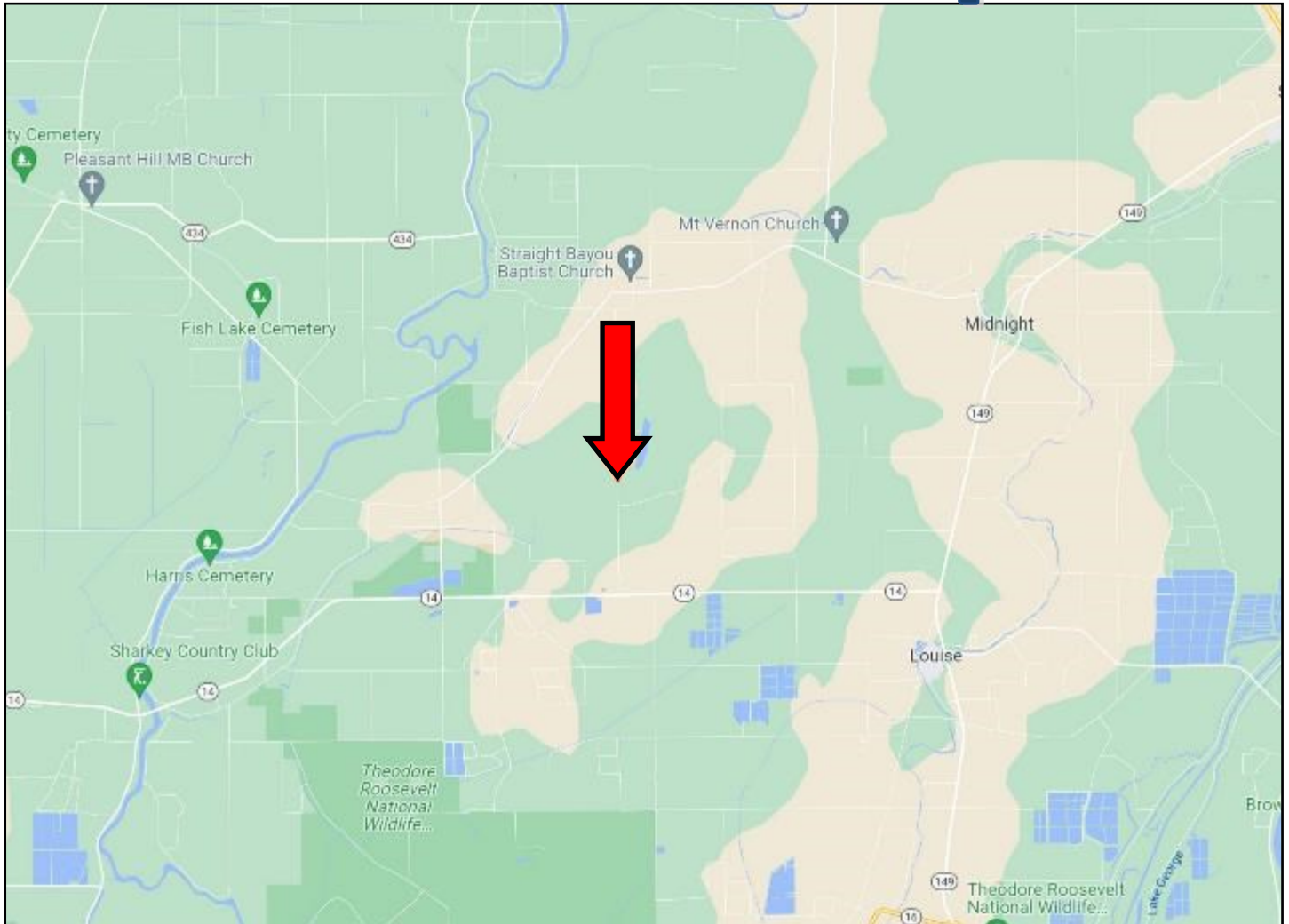
**BRUCE WEST**, REALTOR\*  
 Bruce@TomSmithLand.com  
 662.441.2500 office | 662.873.3007 cell



**TomSmithLandandHomes.com**

Information is believed to be accurate but not guaranteed.

# Directional Map



Directions From Hwy 14 and Hwy 149 in Midnight, MS: Travel Hwy 14 for 4.5 miles. Turn right onto Alligator Lake Road. The property will be on your right. [GOOGLE MAP LINK](#)



*Call me today!*

**BRUCE WEST, REALTOR®**  
Bruce@TomSmithLand.com  
662.441.2500 office | 662.873.3007 cell



[TomSmithLandandHomes.com](http://TomSmithLandandHomes.com)

Information is believed to be accurate but not guaranteed.