

# Investment Property

## Bolivar County, MS



606 Rosemary Rd. Cleveland, MS

\$299,000

Have you been looking for an investment property in Bolivar County, MS? This 12+/- acre property consists of farmland that is zoned A1. City water and sewer are already in place on the property. This tract has the potential for apartments which is rare in Cleveland. Call Tracey today for more information at (662)441-2500 or (662)719-4720.

Directions from the intersection of Hwy 8 and Hwy 61 in Cleveland, MS: Travel North on Hwy 61 for approximately 1.0 miles. Turn left onto East Rosemary Rd and in 0.8 miles the destination is on the right.



*Call me today!*

**TRACEY BELL**, MANAGING BROKER  
Tracey@TomSmithLand.com  
662.441.2500 **office** | 662.719.4720 **cell**



**TomSmithLandandHomes.com**

Information is believed to be accurate but not guaranteed.



# AERIAL MAP



[Click for Interactive Map](#)

*Call me today!*

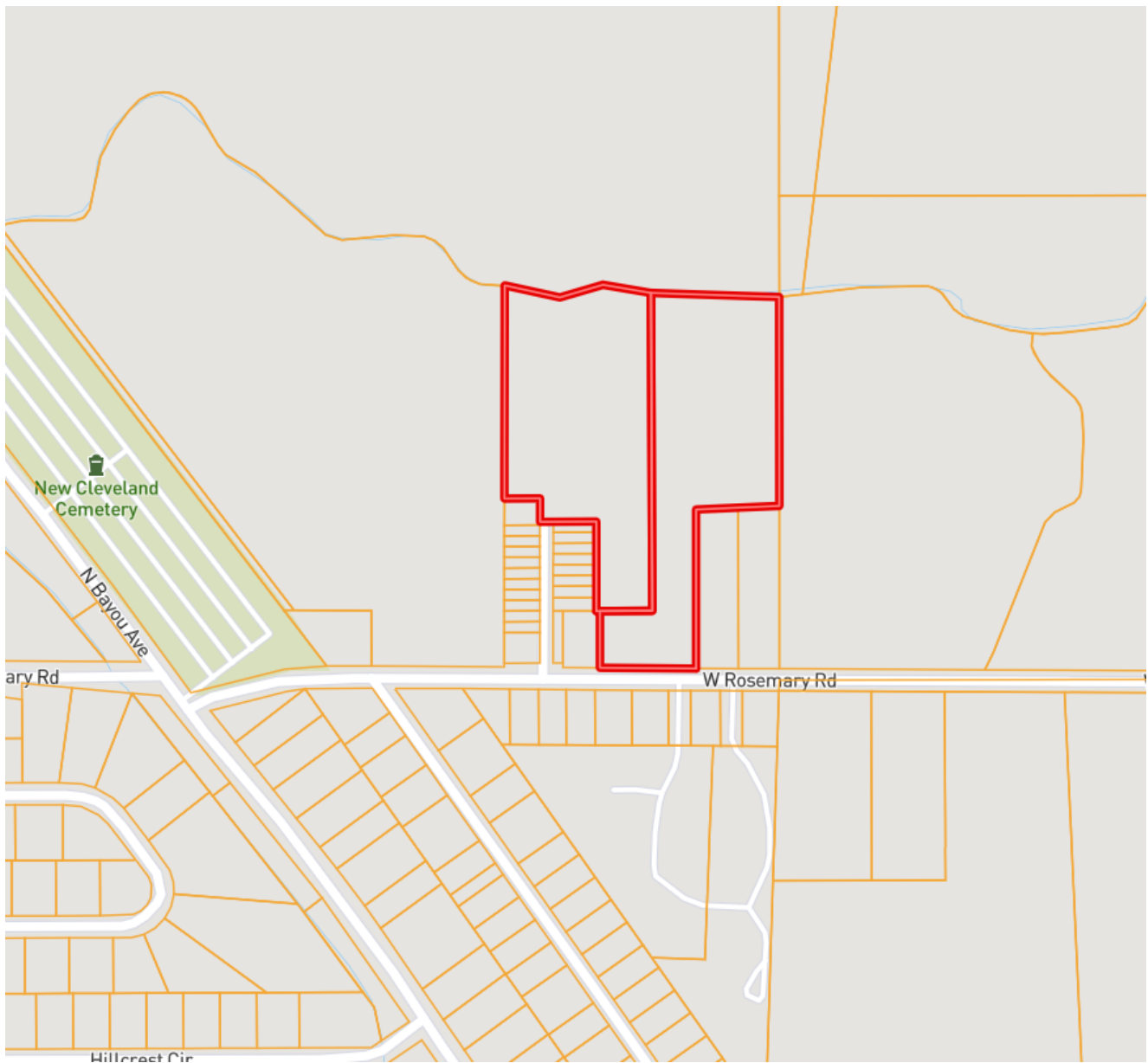
**TRACEY BELL**, MANAGING BROKER  
Tracey@TomSmithLand.com  
662.441.2500 **office** | 662.719.4720 **cell**



[TomSmithLandandHomes.com](http://TomSmithLandandHomes.com)

Information is believed to be accurate but not guaranteed.

# OWNERSHIP MAP



*Call me today!*

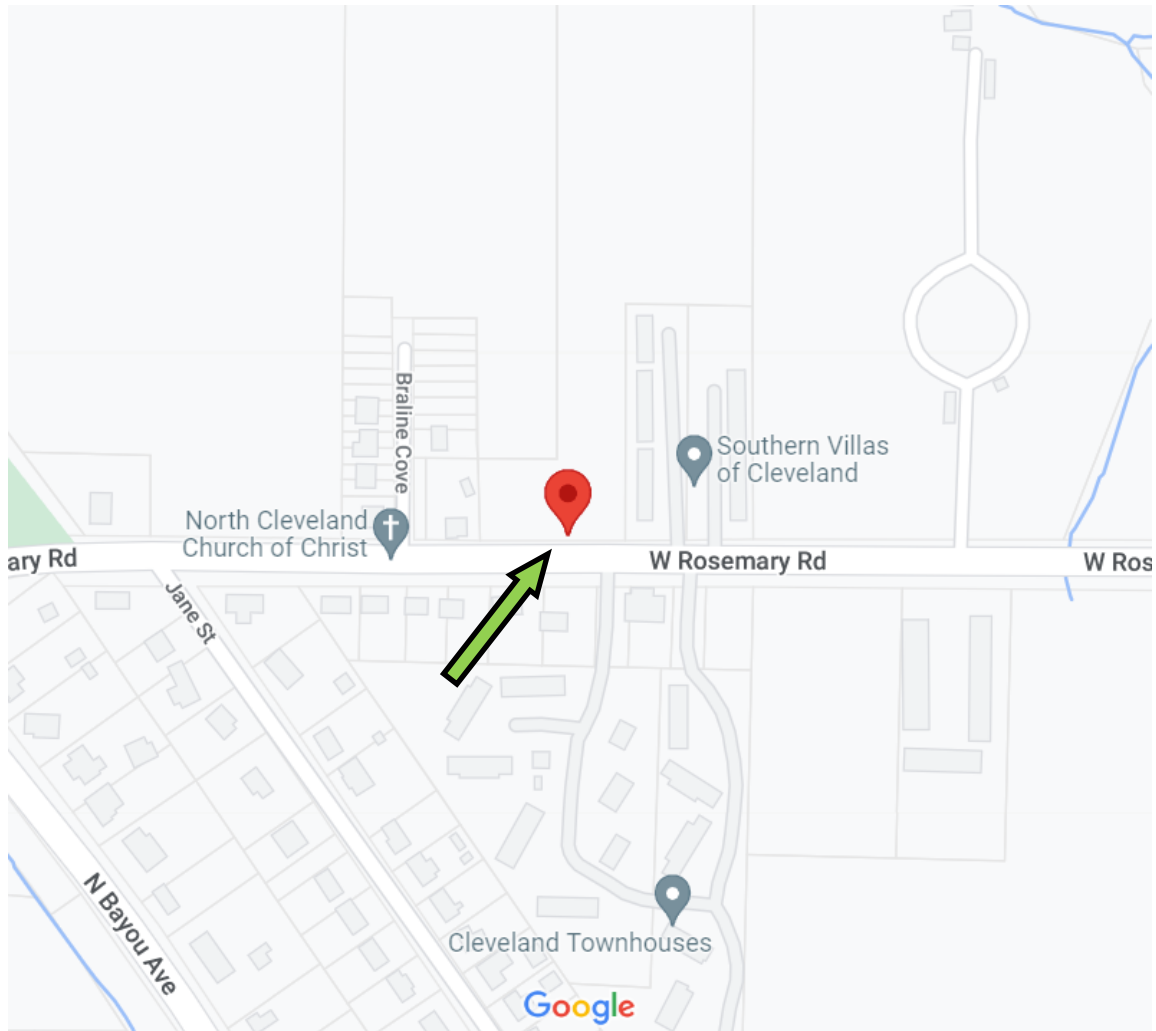
**TRACEY BELL**, MANAGING BROKER  
Tracey@TomSmithLand.com  
662.441.2500 **office** | 662.719.4720 **cell**



**TomSmithLandandHomes.com**

Information is believed to be accurate but not guaranteed.

# DIRECTIONAL MAP



Address: 606 Rosemary Road Cleveland, MS 38732

Directions from the intersection of Hwy 8 and Hwy 61 in Cleveland, MS: Travel North on Hwy 61 for approximately 1.0 miles. Turn left onto East Rosemary Rd and in 0.8 miles the destination is on the right. [Click for Google Maps.](#)

*Call me today!*

**TRACEY BELL**, MANAGING BROKER  
Tracey@TomSmithLand.com  
662.441.2500 **office** | 662.719.4720 **cell**



**TomSmithLandandHomes.com**

Information is believed to be accurate but not guaranteed.