

2 Bedroom-2.5 Bath Home on 1+/- Acre in Pike County, MS



1019 Busy Lane
Summit, MS 39666

\$145,000

Are you looking for a quiet and safe home in Pike County, MS? Then look no further than this wonderful two-bedroom, two-and-a-half-bathroom home located on 1+/- acre just off of Hwy 570 in Summit, MS. Built-in 1998, this beautifully kept 1,800+/- square foot home is just waiting for you! The open floor plan offers effortless movement between the home's main areas, with the bedrooms separated from the living room. The primary bedroom has an adjoining home office with a built-in desk and shelving. The two-car garage joins that main home via a combination pantry/mudroom that also features a half bath. Located in the McComb School District, this exceptional home has a large yard shaded by large mature oaks. With additional features like a Generac generator for those occasional power outages and a paved driveway, this one won't last long! Call Clif Cannon to schedule a showing today!

Directions from the intersection of MS-570 and I-55 in McComb, MS: Take exit 18 from I-55 and travel west on MS-570 for 4 miles. Turn left onto Busy Lane and travel for 475 ft. The home will be on the left.

[Google Map](#)

Call me today!

CLIF CANNON, REALTOR®
Clif@TomSmithLand.com
601.990.5070 office | 601.565.1070 cell



2011-2022
AMERICA'S
BEST
BROKERAGES

TomSmithLandandHomes.com

Information is believed to be accurate but not guaranteed.



Call me today!

CLIF CANNON, REALTOR

Clif@TomSmithLand.com

601.990.5070 office | 601.565.1070 cell



Expect More. Get More.



TomSmithLandandHomes.com

Information is believed to be accurate but not guaranteed.



Clif@TomSmithLand.com
601.990.5070 office | 601.565.1070 cell



Expect More. Get More.

TomSmithLandandHomes.com

Information is believed to be accurate but not guaranteed.



Call me today!

CLIF CANNON, REALTOR®

Clif@TomSmithLand.com
601.990.5070 office | 601.565.1070 cell



Expect More. Get More.



TomSmithLandandHomes.com

Information is believed to be accurate but not guaranteed.

Aerial Map



Call me today!

CLIF CANNON, REALTOR®
Clif@TomSmithLand.com
601.990.5070 **office** | 601.565.1070 **cell**



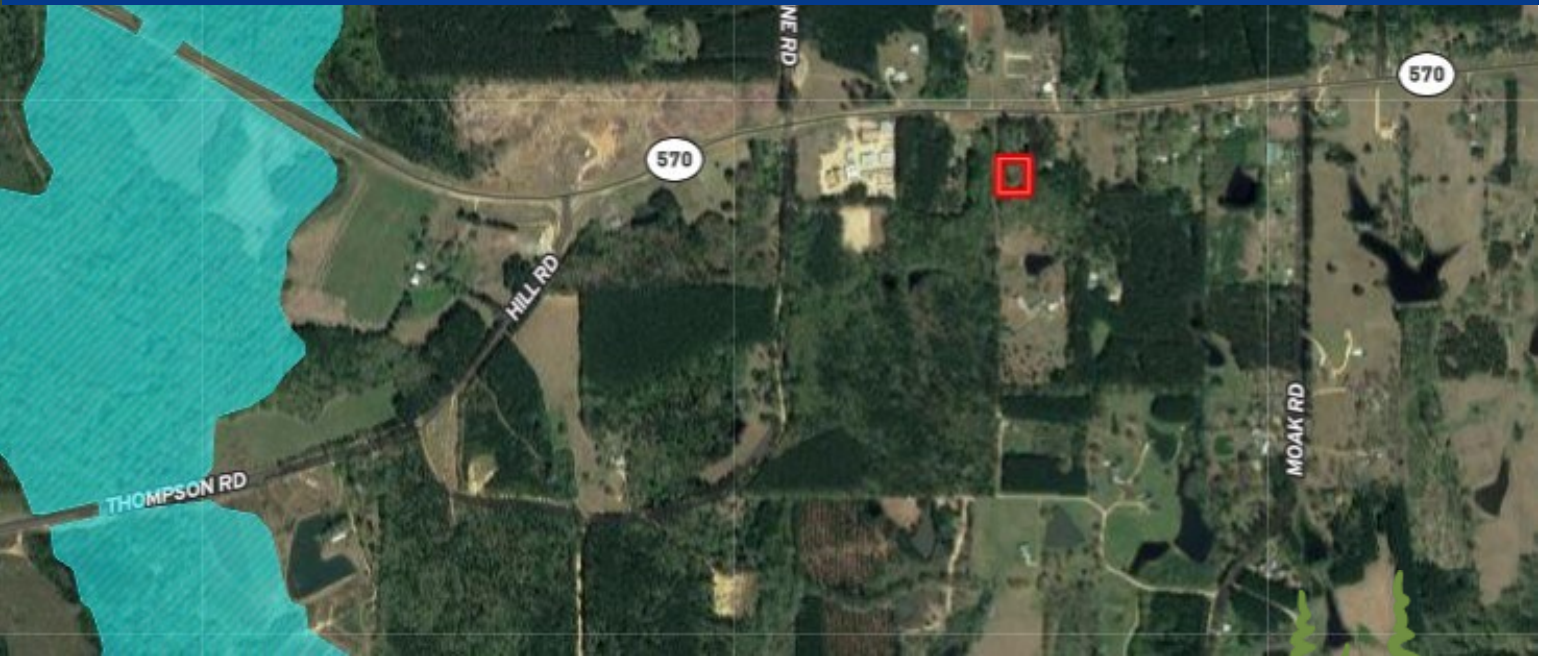
TomSmithLandandHomes.com

Information is believed to be accurate but not guaranteed.

Ownership Map



Flood Map



Call me today!

CLIF CANNON, REALTOR®

Clif@TomSmithLand.com

601.990.5070 office | 601.565.1070 cell



Expect More. Get More.

TomSmithLandandHomes.com

Information is believed to be accurate but not guaranteed.

Directional Map



[Google Map](#)

Directions from the intersection of MS-570 and I-55 in McComb, MS: Take exit 18 from I-55 and travel west on MS-570 for 4 miles. Turn left onto Busy Lane and travel for 475 ft. The home will be on the left.

1019 Busy Lane
Summit, MS 39666

Call me today!

CLIF CANNON, REALTOR®
Clif@TomSmithLand.com
601.990.5070 **office** | 601.565.1070 **cell**



TomSmithLandandHomes.com

Information is believed to be accurate but not guaranteed.