

0.27+/- Acre Home Site Harrison County, MS



\$57,500

2567 River Place Blvd Biloxi, MS, 39531

Look at this great 0.27 +/- acre lot in a developed neighborhood just minutes from the beach! This residential lot is located in Harrison County, MS, in River Place Development. Covenants do apply. The property is convenient to the Gulf Coast and all its amenities, dining, shopping, casinos, fishing, boating, and more. This property is near I10 and only 1 hour from New Orleans, LA. Call Tara today to schedule a viewing!

Directions from the intersection of US-90 and Eisenhower Drive in Biloxi, MS: Travel North on Eisenhower Drive and travel 0.8 miles. Turn right onto Pass Road and travel 0.3 miles. Turn left onto Big Lake Road and travel 0.3 miles. Turn right onto River Place Blvd. The property will be on the right in 4436 feet.



Call me today!

TARA WALKER SMITH, REALTOR®
Tara@TomSmithHomes.com
601.990.5070 office | 601.407.4315 cell



TomSmithLandandHomes.com

Information is believed to be accurate but not guaranteed.



Call me today!

TARA WALKER SMITH, REALTOR®
Tara@TomSmithHomes.com
601.990.5070 office | 601.407.4315 cell



Expect More. Get More.

TomSmithLandandHomes.com

Information is believed to be accurate but not guaranteed.

Aerial Map



[Click for Interactive Map](#)



LandReport
2011-2022
AMERICA'S
BEST
BROKERAGES

Call me today!

TARA WALKER SMITH, REALTOR®
Tara@TomSmithHomes.com
601.990.5070 **office** | 601.407.4315 **cell**

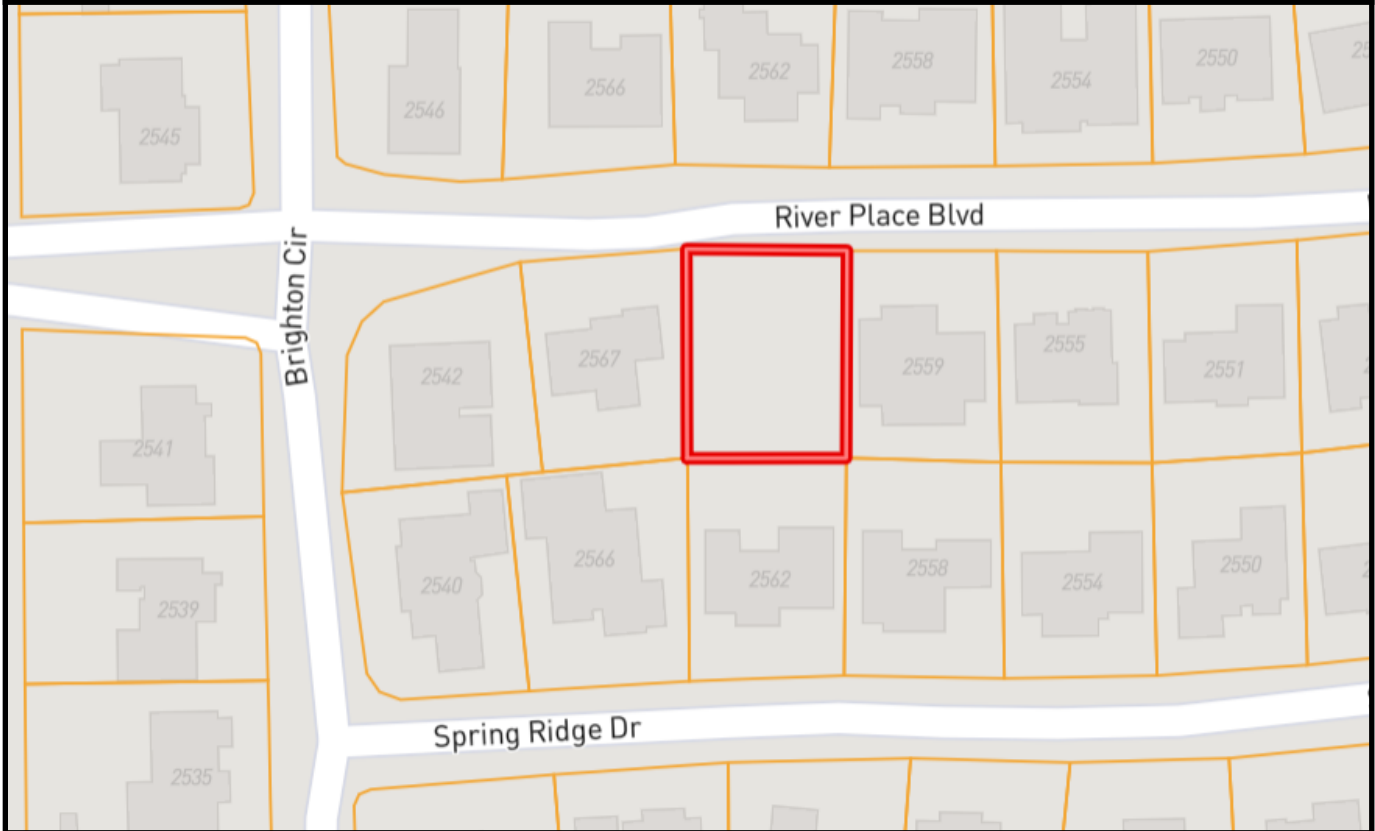


Expect More. Get More.

TomSmithLandandHomes.com

Information is believed to be accurate but not guaranteed.

Ownership Map



Call me today!

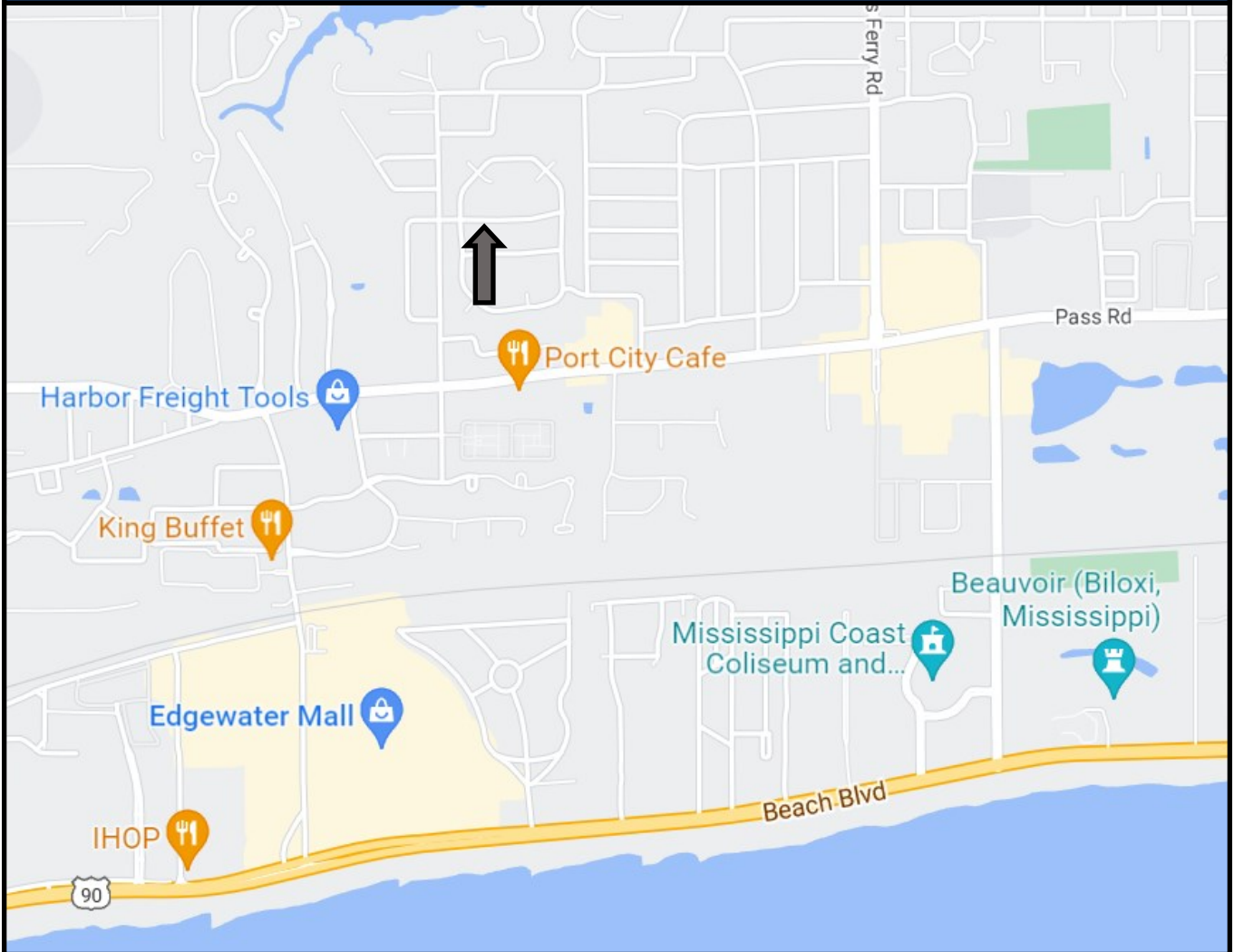
TARA WALKER SMITH, REALTOR®
Tara@TomSmithHomes.com
601.990.5070 office | 601.407.4315 cell



TomSmithLandandHomes.com

Information is believed to be accurate but not guaranteed.

Directional Map



Directions from the intersection of US-90 and Eisenhower Drive in Biloxi, MS: Travel North on Eisenhower Drive and travel 0.8 miles. Turn right onto Pass Road and travel 0.3 miles. Turn left onto Big Lake Road and travel 0.3 miles. Turn right onto River Place Blvd. The property will be on the right in 4436 feet.

[Click for Google Map](#)



Call me today!

TARA WALKER SMITH, REALTOR®
Tara@TomSmithHomes.com
601.990.5070 office | 601.407.4315 cell



TomSmithLandandHomes.com

Information is believed to be accurate but not guaranteed.