

5 Bedroom 3 Bath Home on 3.28± Acres in Rankin County, MS



505 White Oak Rd, Florence, MS \$640,000

Check out this fantastic five bedroom, three bath, 2,700± sf home located in the Deer Valley Subdivision of Florence, MS. This Rankin County home is just minutes from the amenities of Florence, MS, and just over twenty minutes from the amenities of the Metro Jackson area! The home features scored concrete floors and has plenty of room and space for everyone to spread out and have their own space. This two-story home sits on a 3.28± acre lot and has plenty of room for the kids to play. As you step out of the back door, you will see the pool and a covered outside lounging area perfect for entertaining. The 40ftx110ft shop in the back of the property is on a slab and has been framed, wired, and plumbed to add another living quarter. The shop has a 14ft roll-up door and a nice area for a workshop. Call Preston to schedule your private showing today!

Directions from Hwy 49 and Hwy 469S/E Main St. in Florence, MS: Travel Hwy 469 S/E Main St. for .5 miles. Turn left onto Hwy 469 S/Cemetery St/S Church St/Seventh Day Rd and travel .2 miles, then turn right onto Cleary Rd. Travel 1.5 miles, then turn left onto Whitetail Blvd. Travel in 1 mile, then turn right onto White Oak Rd. After 295 feet, the property will be on the left.



Call me today!

PRESTON SMITH, MANAGING BROKER
Preston@TomSmithLand.com
601.990.5070 **office** | 601.209.7150 **cell**



TomSmithLandandHomes.com

Information is believed to be accurate but not guaranteed.



Call me today!

PRESTON SMITH, MANAGING BROKER
Preston@TomSmithLand.com
601.990.5070 office | 601.209.7150 cell



TomSmithLandandHomes.com

Information is believed to be accurate but not guaranteed.



Call me today!

PRESTON SMITH, MANAGING BROKER
Preston@TomSmithLand.com
601.990.5070 office | 601.209.7150 cell



TomSmithLandandHomes.com

Information is believed to be accurate but not guaranteed.



Call me today!

PRESTON SMITH, MANAGING BROKER
Preston@TomSmithLand.com
601.990.5070 office | 601.209.7150 cell



TomSmithLandandHomes.com

Information is believed to be accurate but not guaranteed.

32.1356
-90.1961



WHITE OAK RD

WHITETAIL BLVD

WHITE OAK RD

3.28±
Acres

[Interactive Map Link](#)

Aerial Map

Call me today!

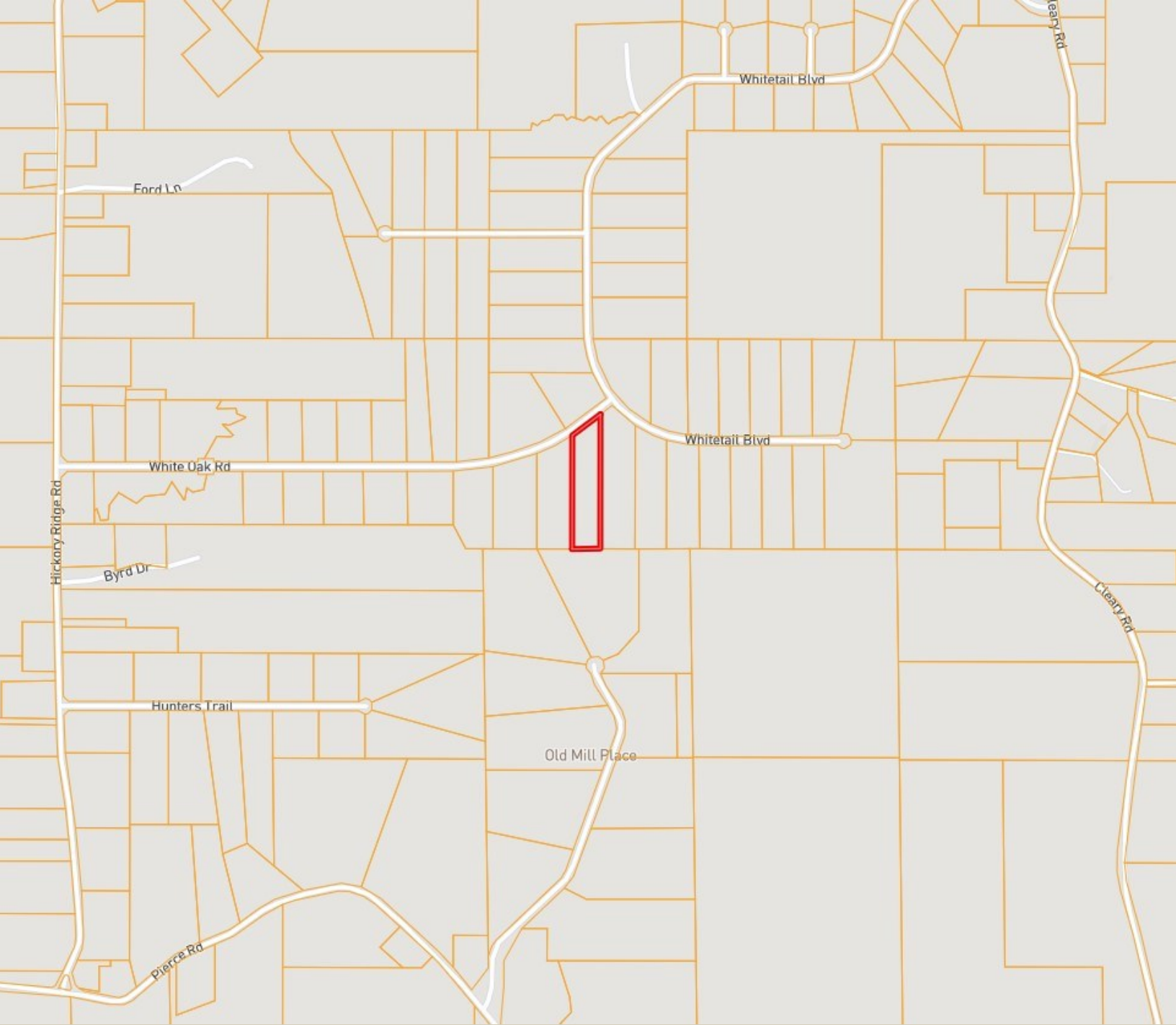
PRESTON SMITH, MANAGING BROKER
Preston@TomSmithLand.com
601.990.5070 **office** | 601.209.7150 **cell**



Expect More. Get More.

TomSmithLandandHomes.com

Information is believed to be accurate but not guaranteed.



Ownership Map

Call me today!

PRESTON SMITH, MANAGING BROKER
Preston@TomSmithLand.com
601.990.5070 **office** | 601.209.7150 **cell**



Expect More. Get More.

TomSmithLandandHomes.com

Information is believed to be accurate but not guaranteed.



Topography Map

Call me today!

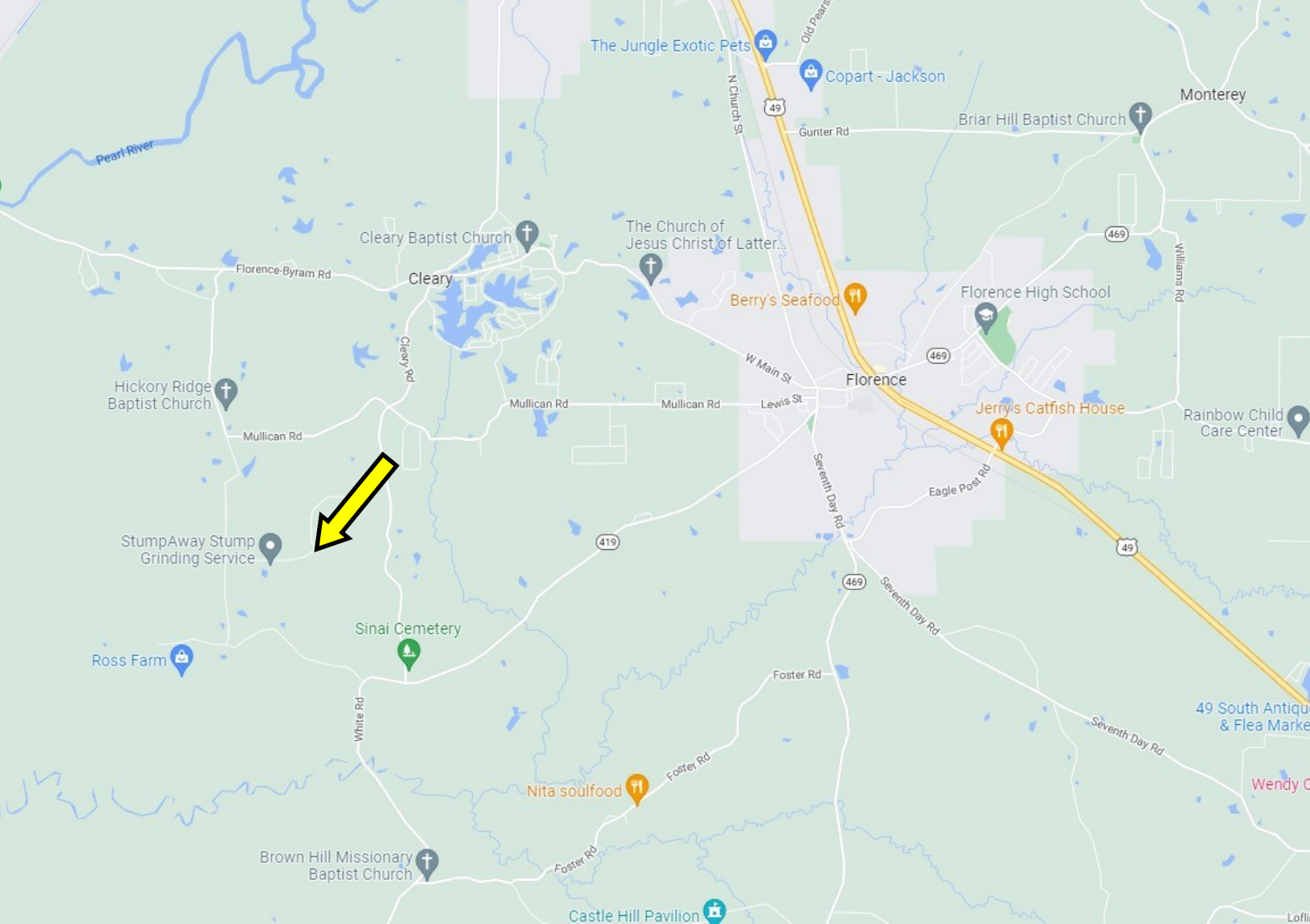
PRESTON SMITH, MANAGING BROKER
Preston@TomSmithLand.com
601.990.5070 **office** | 601.209.7150 **cell**



Expect More. Get More.

TomSmithLandandHomes.com

Information is believed to be accurate but not guaranteed.



Directional Map

Directions from US-49 in Florence, MS: Exit onto Hwy 469 S/E Main St, in .5 miles, turn left onto Hwy 469 S/Cemetery St/S Church St/Seventh Day Rd, in .2 miles, turn tight onto Clery Rd, in 1.5 miles, turn left onto Whitetail Blvd, in 1.0 mile, turn right onto White Oak Rd, in 295 feet, the property will be on the left.

Address: 505 White Oak Rd, Florence, MS 39073

Google Map Link

Call me today!

PRESTON SMITH, MANAGING BROKER
Preston@TomSmithLand.com
601.990.5070 **office** | 601.209.7150 **cell**



Expect More. Get More.

TomSmithLandandHomes.com

Information is believed to be accurate but not guaranteed.