

BEAUTIFUL RANKIN COUNTY HOME ON 3.28± ACRES

505 White Oak Road Florence, MS 39073



Discover this incredible five-bedroom, three-bathroom, 2,700± square foot home located within the charming Deer Valley Subdivision in Florence, MS. This home, located in Rankin County, offers quick access to Florence's amenities and is just a short twenty-minute drive from the Metro Jackson area. The home features scored concrete floors and has plenty of room and space for everyone to spread out and have their own space. This two-story home sits on a 3.28± acre lot and has plenty of room for the kids to play. The backyard features a pool and a covered outdoor lounge area, ideal for hosting gatherings. At the rear of the property, you'll find a 40ftx110ft shop with a slab foundation, framing, wiring, and plumbing in place for potential additional living quarters. The shop also includes a 14ft roll-up door and a convenient workshop area. Contact Haley today to schedule your private viewing!



**HALEY
BELDEN**
REALTOR®

Office: 601.898.2772

Cell: 601.209.2310

Haley@TomSmithHomes.com



A Real Estate Expert You Can Trust

TomSmithLandandHomes.com

Information is believed to be accurate but not guaranteed.





HALEY BELDEN

REALTOR®

Office: 601.898.2772

Cell: 601.209.2310

Haley@TomSmithHomes.com



A Real Estate Expert You Can Trust

TomSmithLandandHomes.com

Information is believed to be accurate but not guaranteed.





HALEY BELDEN

REALTOR®

Office: 601.898.2772

Cell: 601.209.2310

Haley@TomSmithHomes.com



A Real Estate Expert You Can Trust

TomSmithLandandHomes.com

Information is believed to be accurate but not guaranteed.





HALEY BELDEN

REALTOR®

Office: 601.898.2772

Cell: 601.209.2310

Haley@TomSmithHomes.com



A Real Estate Expert You Can Trust

TomSmithLandandHomes.com

Information is believed to be accurate but not guaranteed.





HALEY BELDEN

REALTOR®

Office: 601.898.2772

Cell: 601.209.2310

Haley@TomSmithHomes.com



A Real Estate Expert You Can Trust

TomSmithLandandHomes.com

Information is believed to be accurate but not guaranteed.



Aerial Map



[Click Here for an Interactive Map](#)

HALEY BELDEN

REALTOR®

Office: 601.898.2772

Cell: 601.209.2310

Haley@TomSmithHomes.com



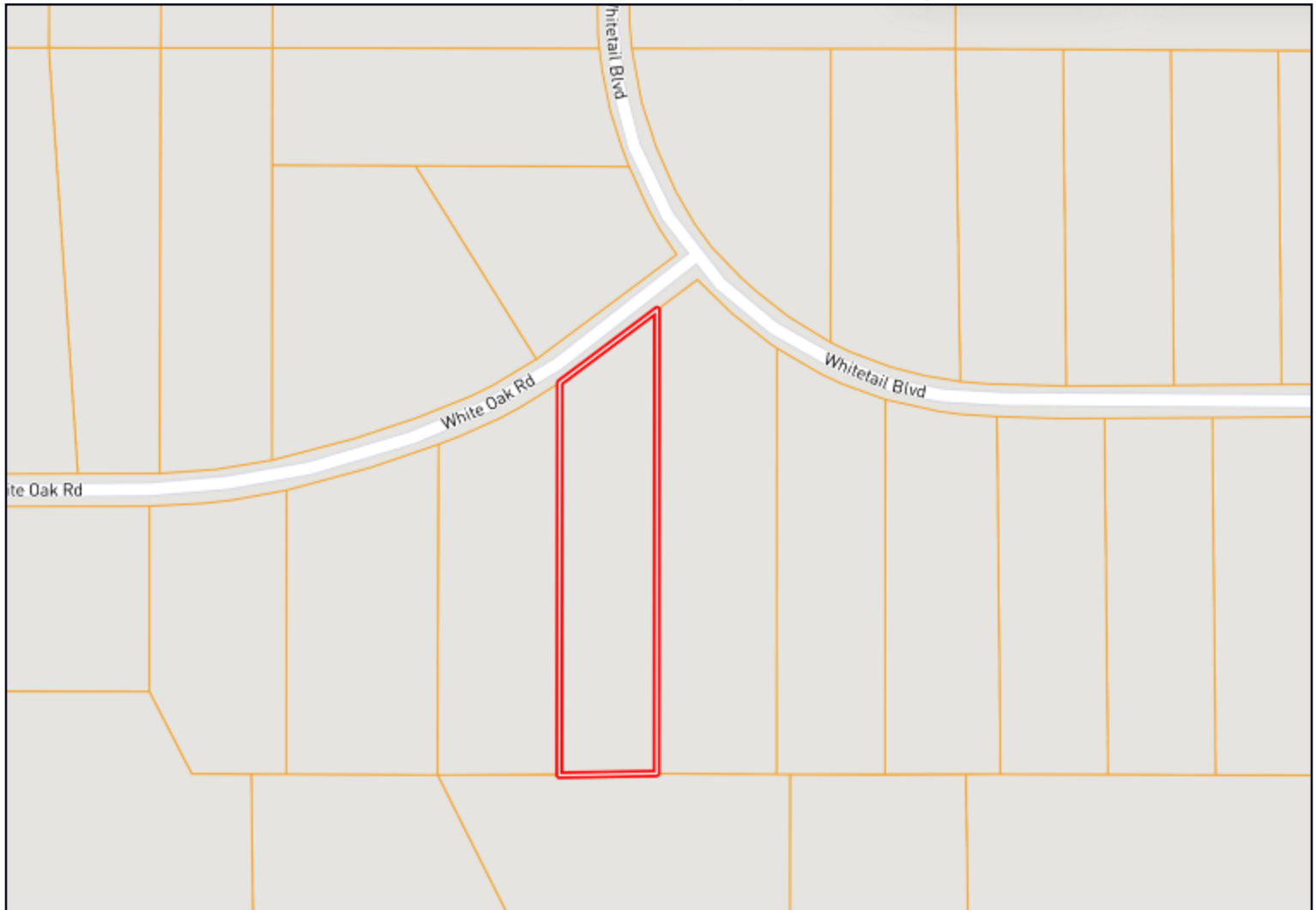
A Real Estate Expert You Can Trust

TomSmithLandandHomes.com

Information is believed to be accurate but not guaranteed.



Ownership Map



HALEY BELDEN

REALTOR®

Office: 601.898.2772

Cell: 601.209.2310

Haley@TomSmithHomes.com



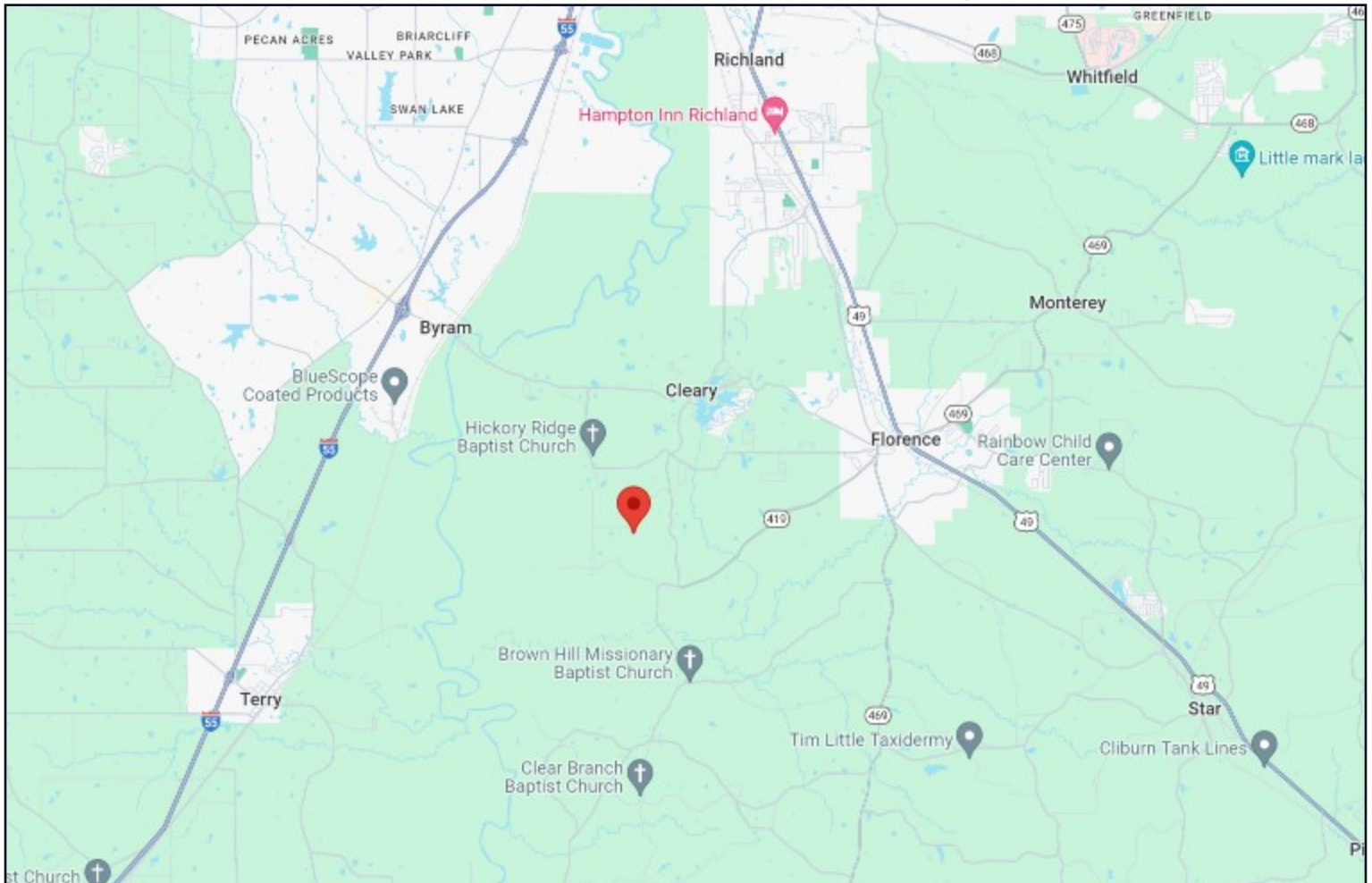
A Real Estate Expert You Can Trust

TomSmithLandandHomes.com

Information is believed to be accurate but not guaranteed.



Directional Map



Directions from the Intersection of Hwy 469 and Hwy 49 in Florence, MS: Turn onto Hwy 469 S/E Main St and travel .5 miles. Turn left onto Hwy 469 S/Cemetery St/S Church St/Seventh Day Rd and travel .2 miles. Turn right onto Cleary Rd and travel 1.5 miles. Turn left onto Whitetail Blvd, then in 1.0 mile, turn right onto White Oak Rd. After 295 feet, the property will be on the left.

505 White Oak Rd, Florence, MS 39073—Google Map Link



**HALEY
BELDEN**
REALTOR®

Office: 601.898.2772

Cell: 601.209.2310

Haley@TomSmithHomes.com



A Real Estate Expert You Can Trust

TomSmithLandandHomes.com

Information is believed to be accurate but not guaranteed.

