

2+/- Acres Oktibbeha County, MS Potential Development Tract



This 2+/- acre lot is located just past Hickory Grove Road on the north side of Hwy 182. This Oktibbeha County, MS, property, would be an excellent location for a commercial business. The majority of this land is pasture with good topography helping on the initial prep work for construction. Located in an Opportunity Zone with utilities available. There will be some light deed restrictions. Additional land is available to the west and east of this lot.

Directions from the intersection of Hwy 182 and Hwy 82 in Clayton Village: Travel east 3.2 miles on Hwy 182. The property will be just east of Hickory Grove Road on the north side of Hwy 182.

[GOOGLE MAPS LINK](#)

Call me today!

MICHAEL COOPER, REALTOR®
Mcooper@TomSmithLand.com
662.268.6333 office | 662.285.8686 cell



TomSmithLandandHomes.com

Information is believed to be accurate but not guaranteed.



Call me today!

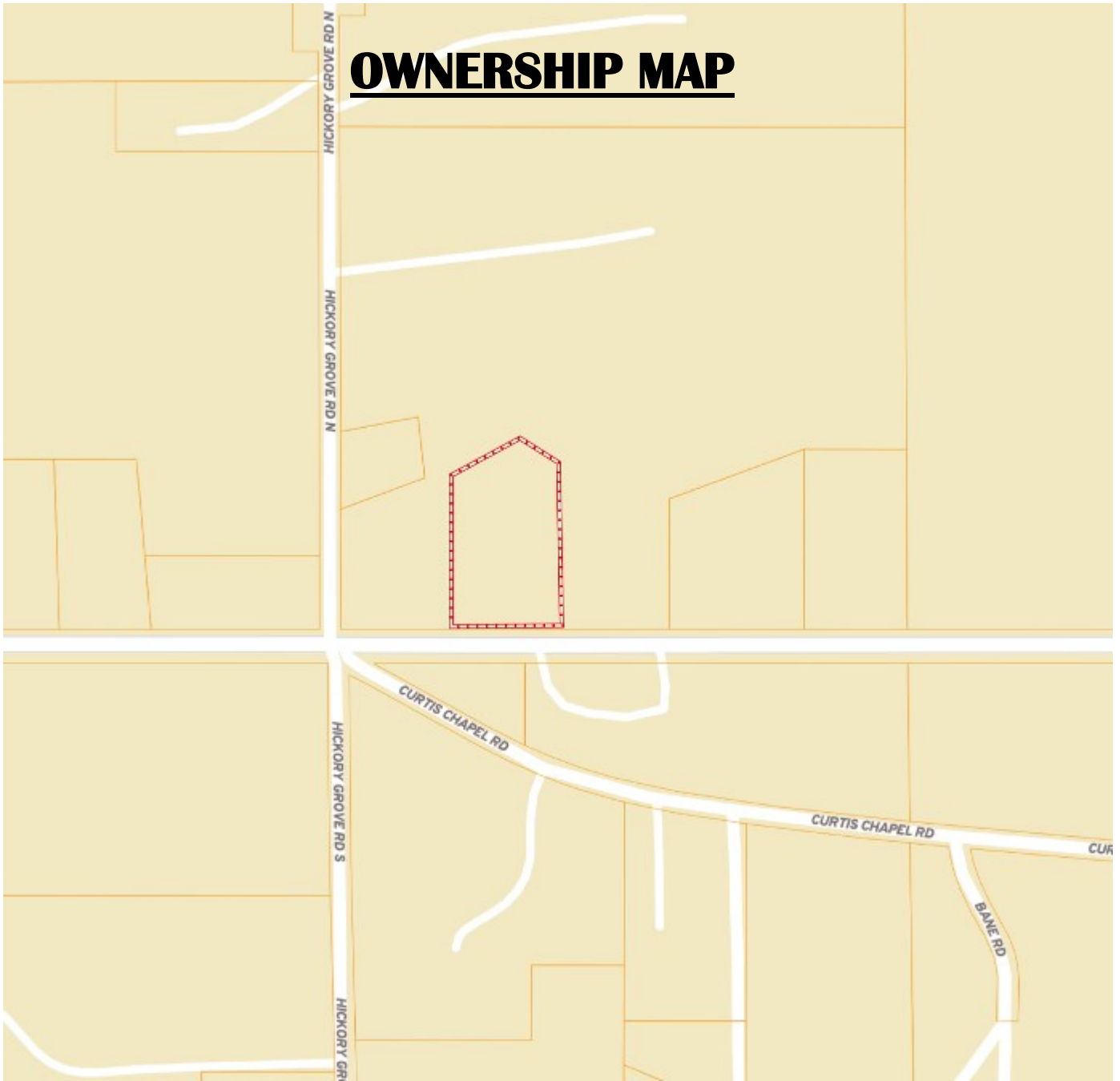
MICHAEL COOPER, REALTOR®
Mcooper@TomSmithLand.com
662.268.6333 office | 662.285.8686 cell



TomSmithLandandHomes.com

Information is believed to be accurate but not guaranteed.

OWNERSHIP MAP



Call me today!

MICHAEL COOPER, REALTOR®
Mcooper@TomSmithLand.com
662.268.6333 office | 662.285.8686 cell

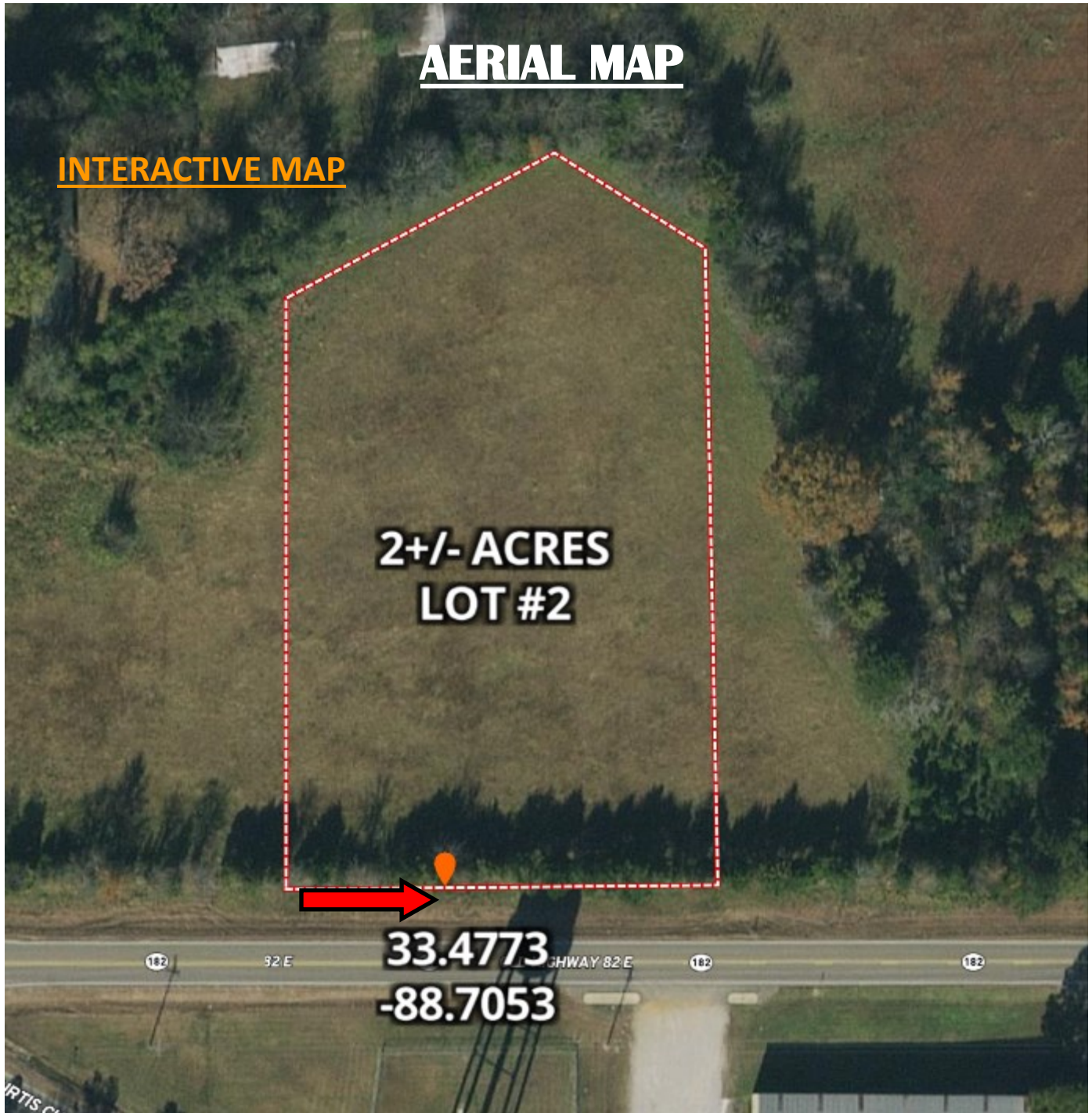


TomSmithLandandHomes.com

Information is believed to be accurate but not guaranteed.

AERIAL MAP

INTERACTIVE MAP



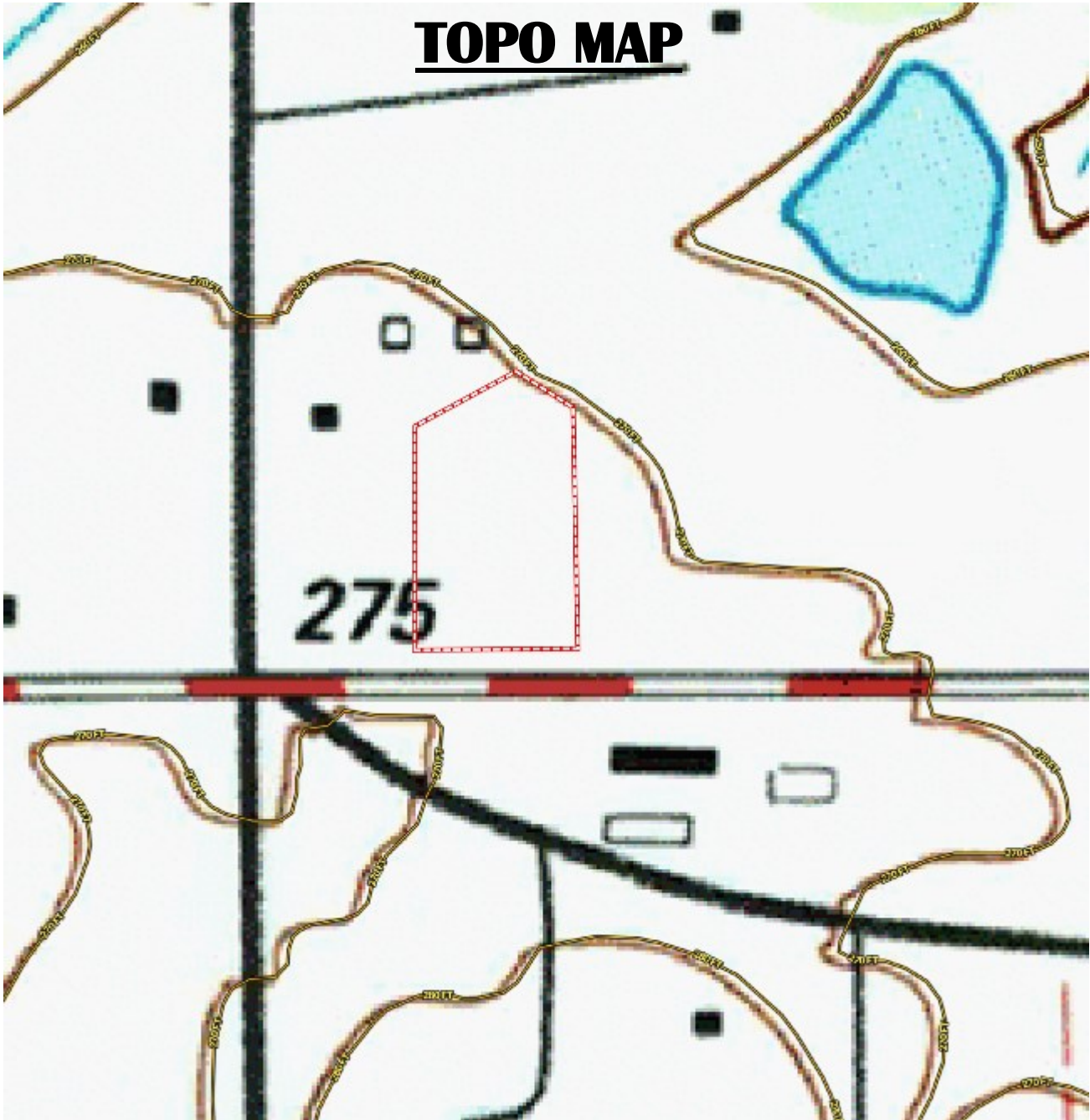
Call me today!

MICHAEL COOPER, REALTOR®
Mcooper@TomSmithLand.com
662.268.6333 office | 662.285.8686 cell



TomSmithLandandHomes.com

Information is believed to be accurate but not guaranteed.



Call me today!

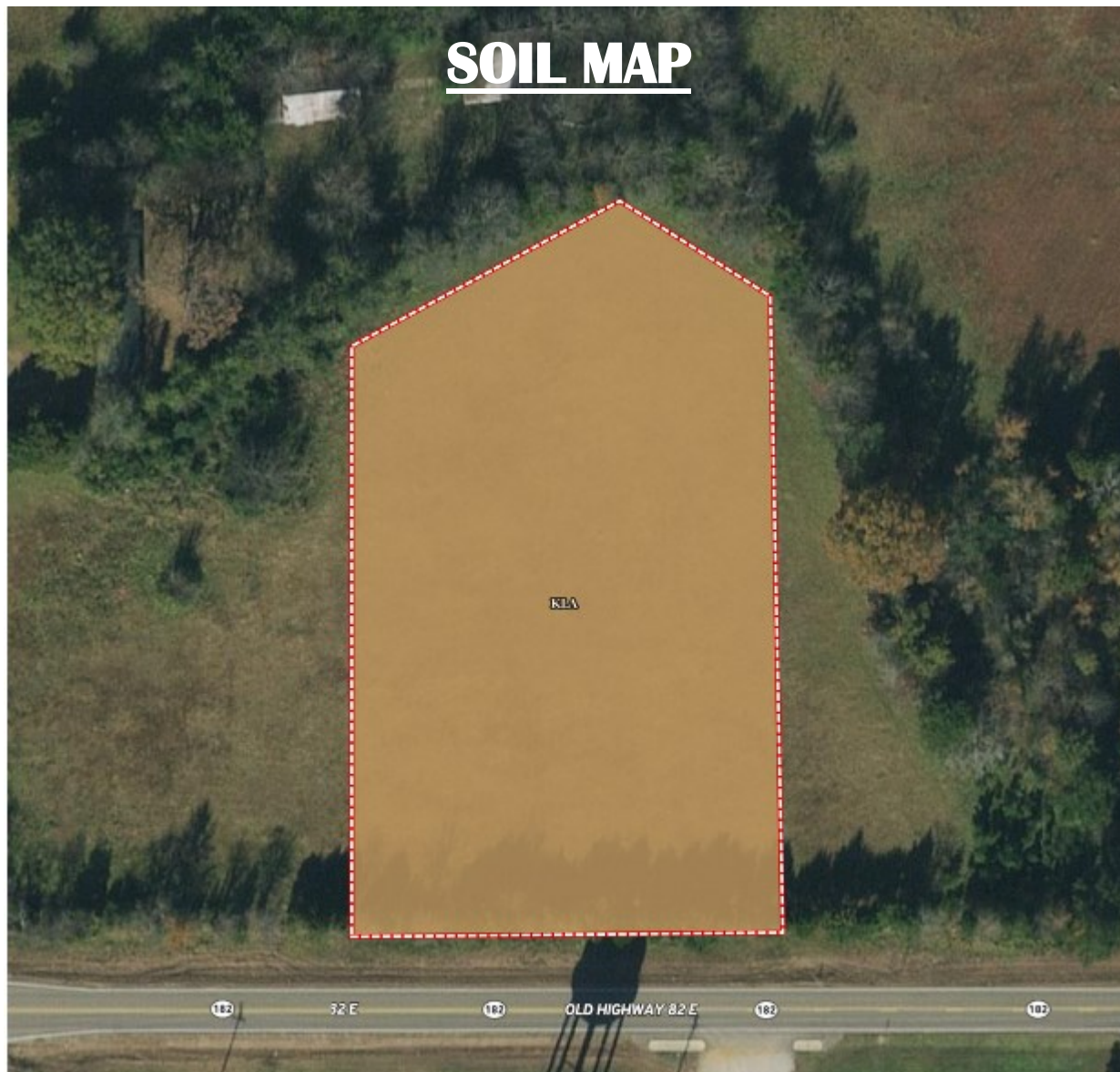
MICHAEL COOPER, REALTOR®
Mcooper@TomSmithLand.com
662.268.6333 office | 662.285.8686 cell



TomSmithLandandHomes.com

Information is believed to be accurate but not guaranteed.

SOIL MAP



SOIL CODE	SOIL DESCRIPTION	ACRES	%	CPI	NCCPI	CAP
KIA	Kipling silty clay loam, 0 to 2 percent slopes	2.37	100.0	0	61	3w
TOTALS		2.37(*)	100%	-	61.0	3.0



Call me today!

MICHAEL COOPER, REALTOR®
 Mcooper@TomSmithLand.com
 662.268.6333 office | 662.285.8686 cell

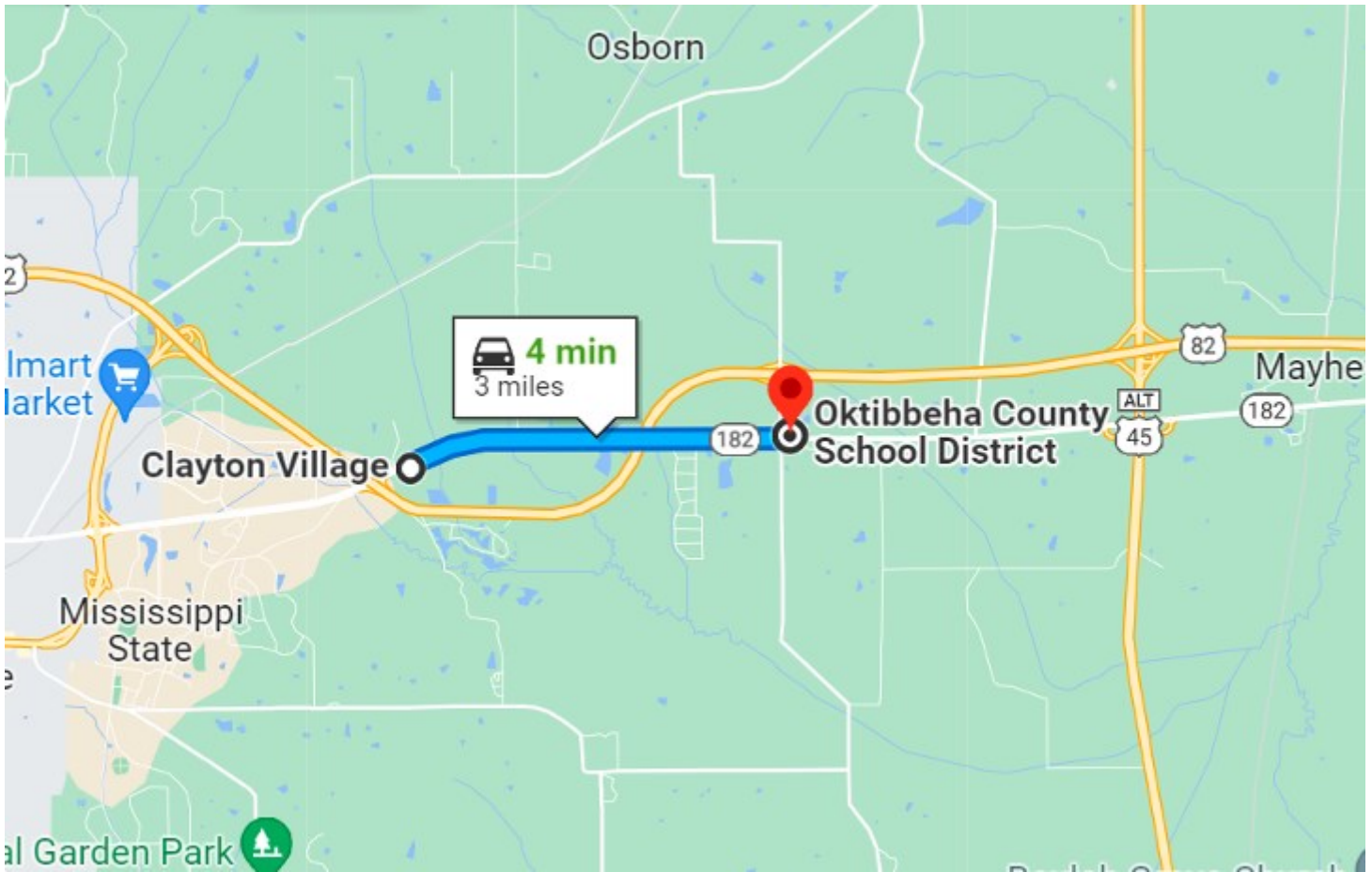


Expect More. Get More.

TomSmithLandandHomes.com

Information is believed to be accurate but not guaranteed.

DIRECTIONAL MAP



Directions from the intersection of Hwy 182 and Hwy 82 in Clayton Village: Travel east 3.2 miles on Hwy 182. The property will be just east of Hickory Grove Road on the north side of Hwy 182.

[GOOGLE MAPS LINK](#)



Call me today!

MICHAEL COOPER, REALTOR®
Mcooper@TomSmithLand.com
662.268.6333 office | 662.285.8686 cell



TomSmithLandandHomes.com

Information is believed to be accurate but not guaranteed.