

1.5+/- Acre Investment Property In Sunflower County, MS



\$69,500

1534 Hwy. 82 Indianola, MS 38751

This 1.5+/- acre tract is conveniently located just off Highway 82 East in Indianola, Sunflower County, MS. A perfect spot for your business with plenty of highway frontage. This highway has over 20,000 daily traffic count. Visibility is key to maximizing this valuable tract for multiple uses, all located just off the heartline of the Delta, Highway 82. Call Emerson for your private showing today.

Directions from the intersection of Hwy 49 and Hwy 82 in Indianola, MS: Travel West on Hwy 82 for approximately 1.0 miles and the destination is on the left.



Call me today!

EMERSON LOVELACE, REALTOR®
Emerson@TomSmithLand.com
662.441.2500 office | 662.715.3302 cell



TomSmithLandandHomes.com

Information is believed to be accurate but not guaranteed.



Call me today!

EMERSON LOVELACE, REALTOR®
Emerson@TomSmithLand.com
662.441.2500 **office** | 662.715.3302 **cell**



TomSmithLandandHomes.com

Information is believed to be accurate but not guaranteed.

AERIAL MAP



[Click for Interactive Map](#)

Call me today!

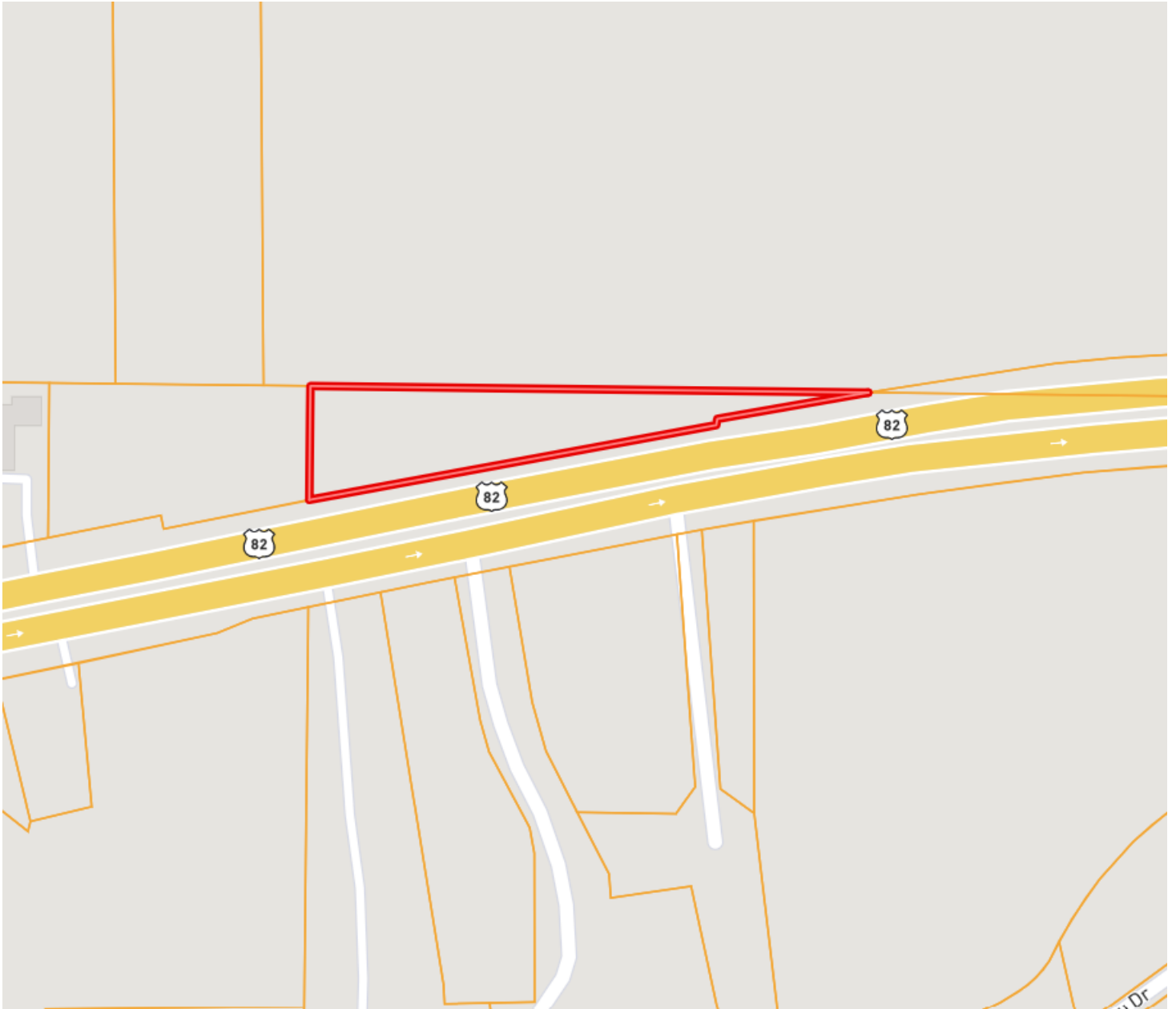
EMERSON LOVELACE, REALTOR®
Emerson@TomSmithLand.com
662.441.2500 **office** | 662.715.3302 **cell**



TomSmithLandandHomes.com

Information is believed to be accurate but not guaranteed.

OWNERSHIP MAP



Call me today!

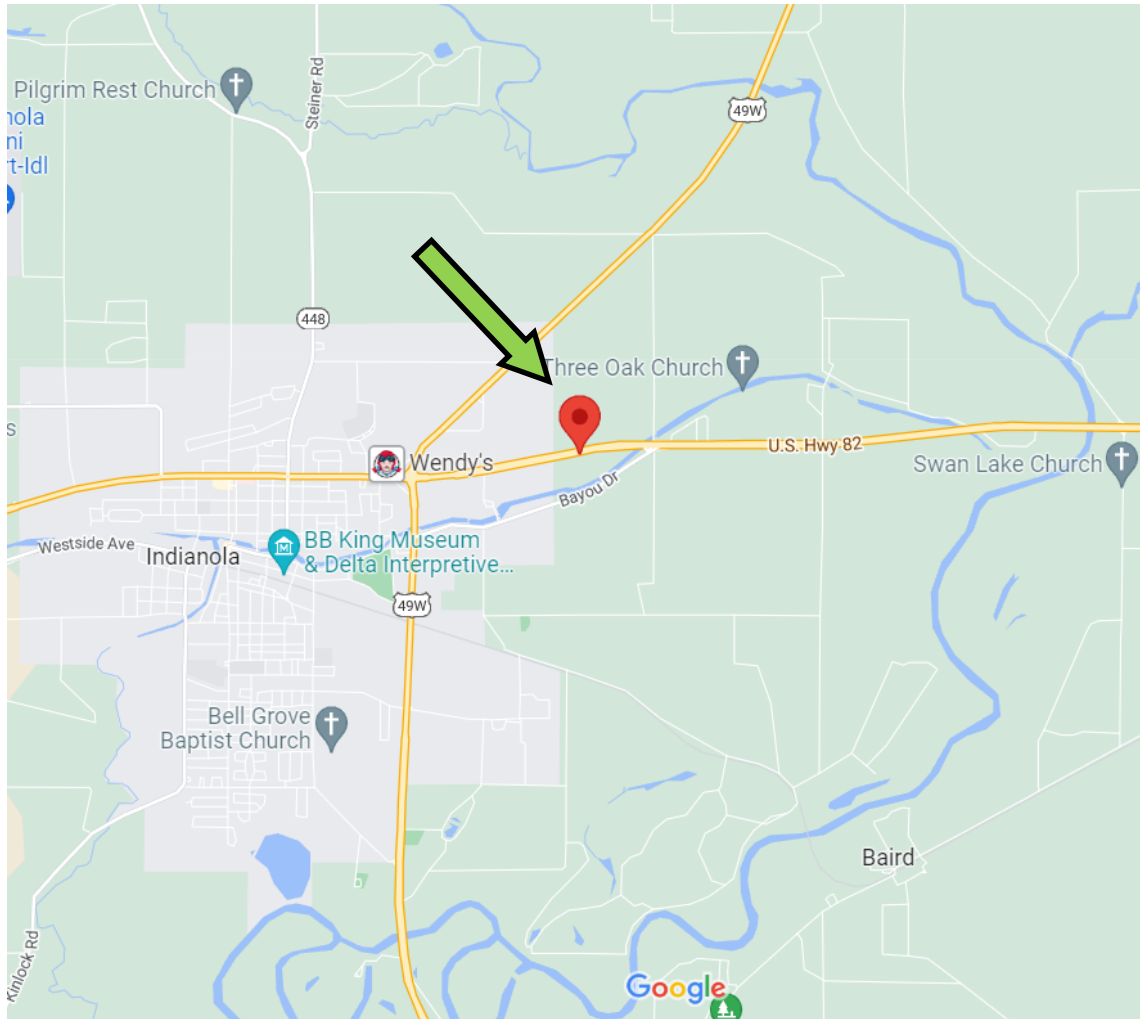
EMERSON LOVELACE, REALTOR®
Emerson@TomSmithLand.com
662.441.2500 **office** | 662.715.3302 **cell**



TomSmithLandandHomes.com

Information is believed to be accurate but not guaranteed.

DIRECTIONAL MAP



Address: 1534 Hwy 82 Indianola, MS 38751

Directions from the intersection of Hwy 49 & Hwy 82 in Indianola, MS: Travel West on Hwy 82 for approximately 1.0 miles and the destination is on the left. [Click for Google Maps.](#)



Call me today!

EMERSON LOVELACE, REALTOR®
Emerson@TomSmithLand.com
662.441.2500 **office** | 662.715.3302 **cell**



TomSmithLandandHomes.com

Information is believed to be accurate but not guaranteed.