

Recreational Homesite

36± Acres in Lawrence County, MS



\$154,900

Are you looking for a recreational tract or a place to build in Lawrence County, MS? Look at this 36+/- acre property on the Lincoln/Lawrence County line. Access to this property is convenient and easy, with road frontage on E Lincoln Road and Ben Mason Road in Monticello. This one is a perfect hunting tract with established food plots. There is also an excellent internal road system to walk or ride. The majority of the property is pines with some hills. Utilities are available at the road, and it is located in Lawrence County School District. Call Chad today to schedule a viewing!



**CHAD
WILSON**
REALTOR®

Office: 601.898.2772

Cell: 601.750.1970

Chad@TomSmithLand.com



A Real Estate Expert You Can Trust

TomSmithLandandHomes.com

Information is believed to be accurate but not guaranteed.





CHAD WILSON
REALTOR®

Office: 601.898.2772

Cell: 601.750.1970

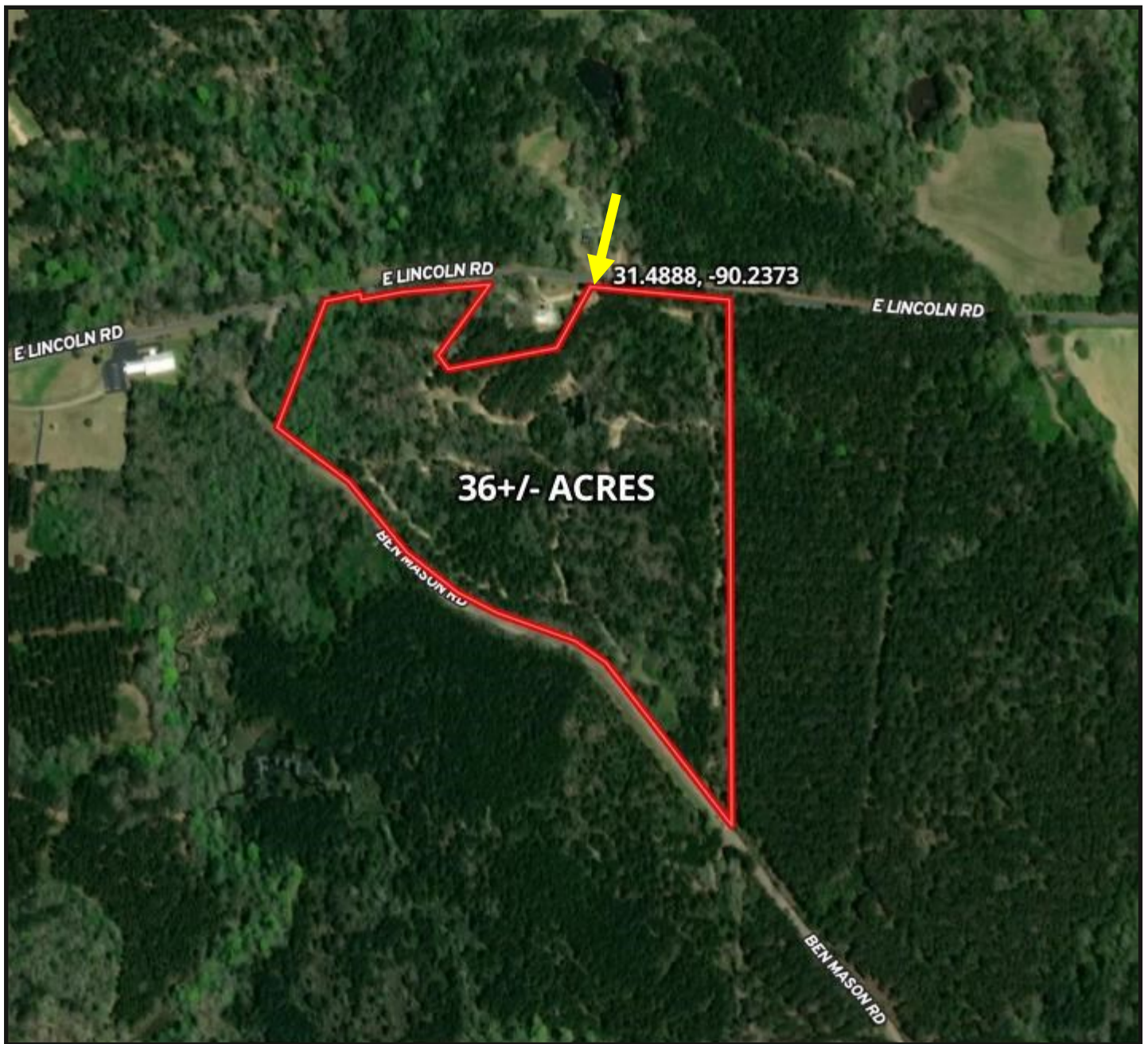
Chad@TomSmithLand.com



A Real Estate Expert You Can Trust
TomSmithLandandHomes.com

Information is believed to be accurate but not guaranteed.





Aerial Map

[Click here for an Interactive Map](#)

CHAD WILSON

REALTOR®

Office: 601.898.2772

Cell: 601.750.1970

Chad@TomSmithLand.com

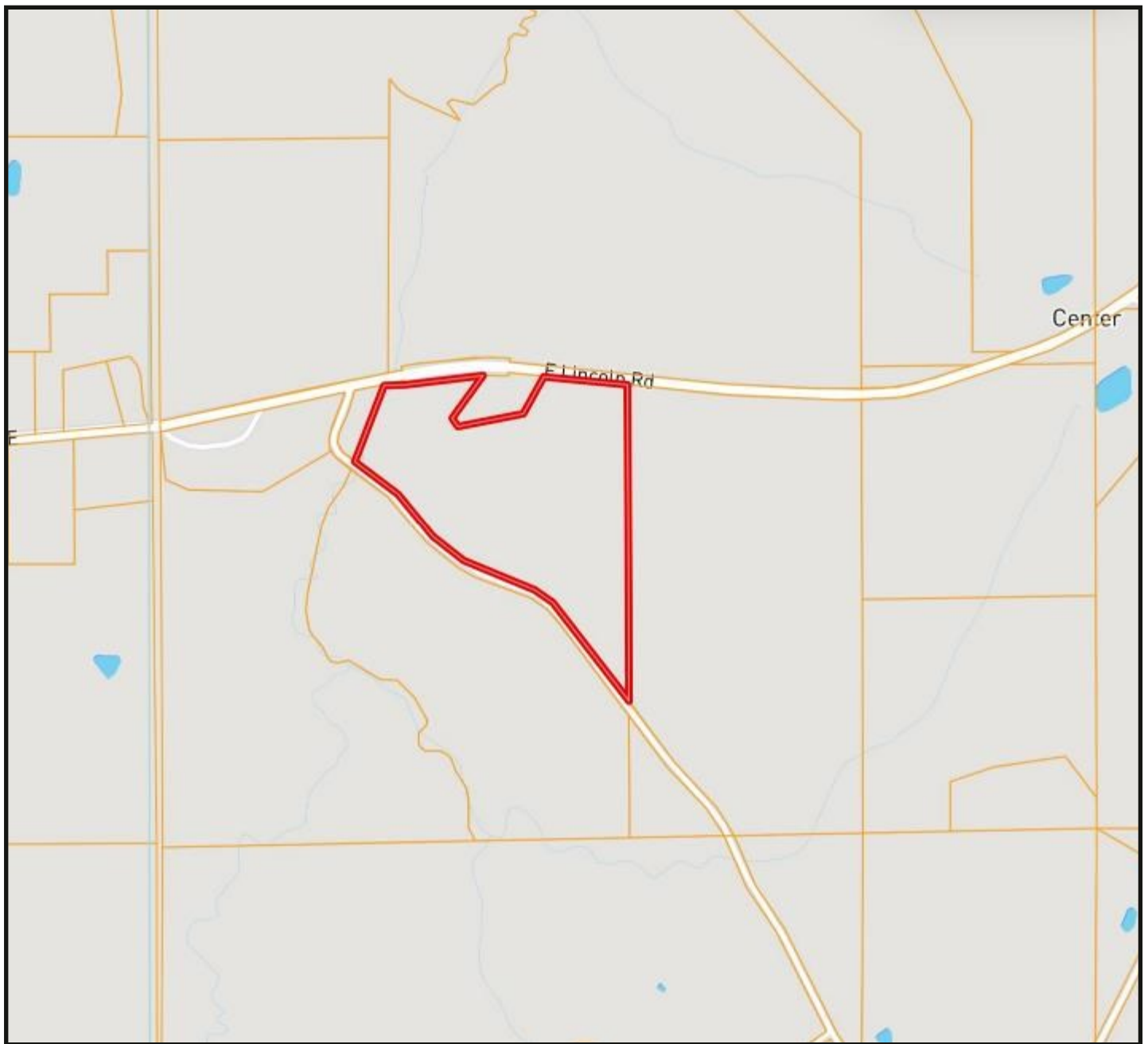


A Real Estate Expert You Can Trust

TomSmithLandandHomes.com

Information is believed to be accurate but not guaranteed.





Ownership Map

CHAD WILSON
REALTOR®

Office: 601.898.2772

Cell: 601.750.1970

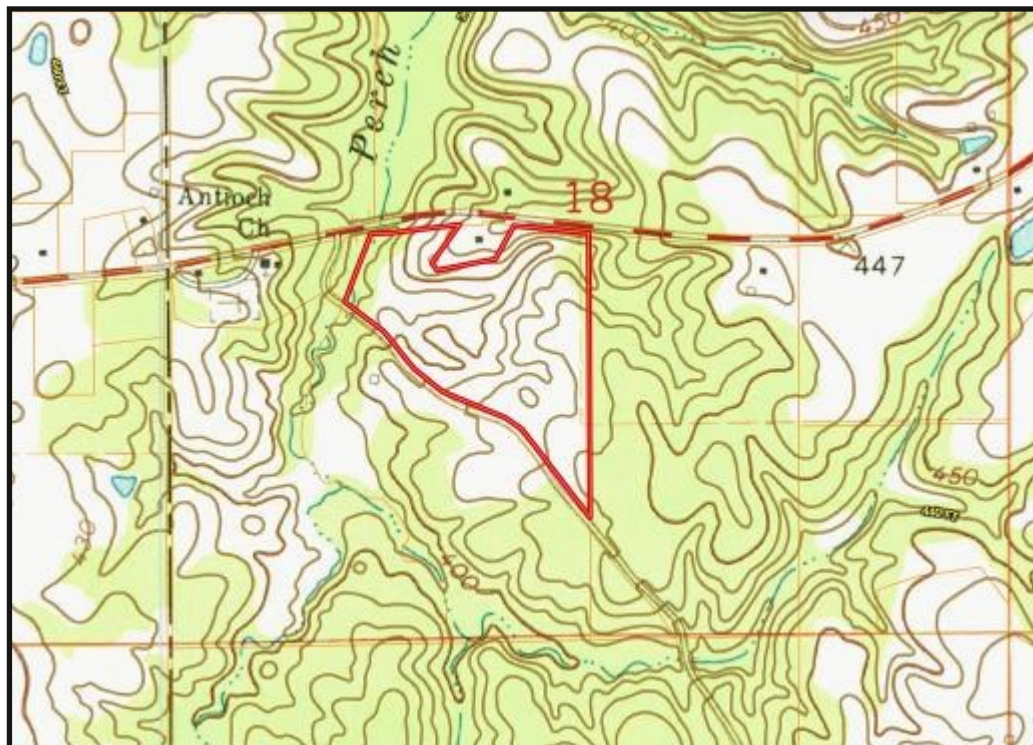
Chad@TomSmithLand.com



A Real Estate Expert You Can Trust
TomSmithLandandHomes.com

Information is believed to be accurate but not guaranteed.





Topo Map



Soil Map

SOIL CODE	SOIL DESCRIPTION	ACRES	%	CPI	NCCPI	CAP
PrB	Providence silt loam, 2 to 5 percent slopes	18.22	51.95	0	49	2e
SmE	Smithdale sandy loam, 15 to 30 percent slopes	16.55	47.19	0	37	7e
Ar	Arkabutla soils, frequently flooded	0.3	0.86	0	68	4w

CHAD WILSON

REALTOR®

Office: 601.898.2772

Cell: 601.750.1970

Chad@TomSmithLand.com

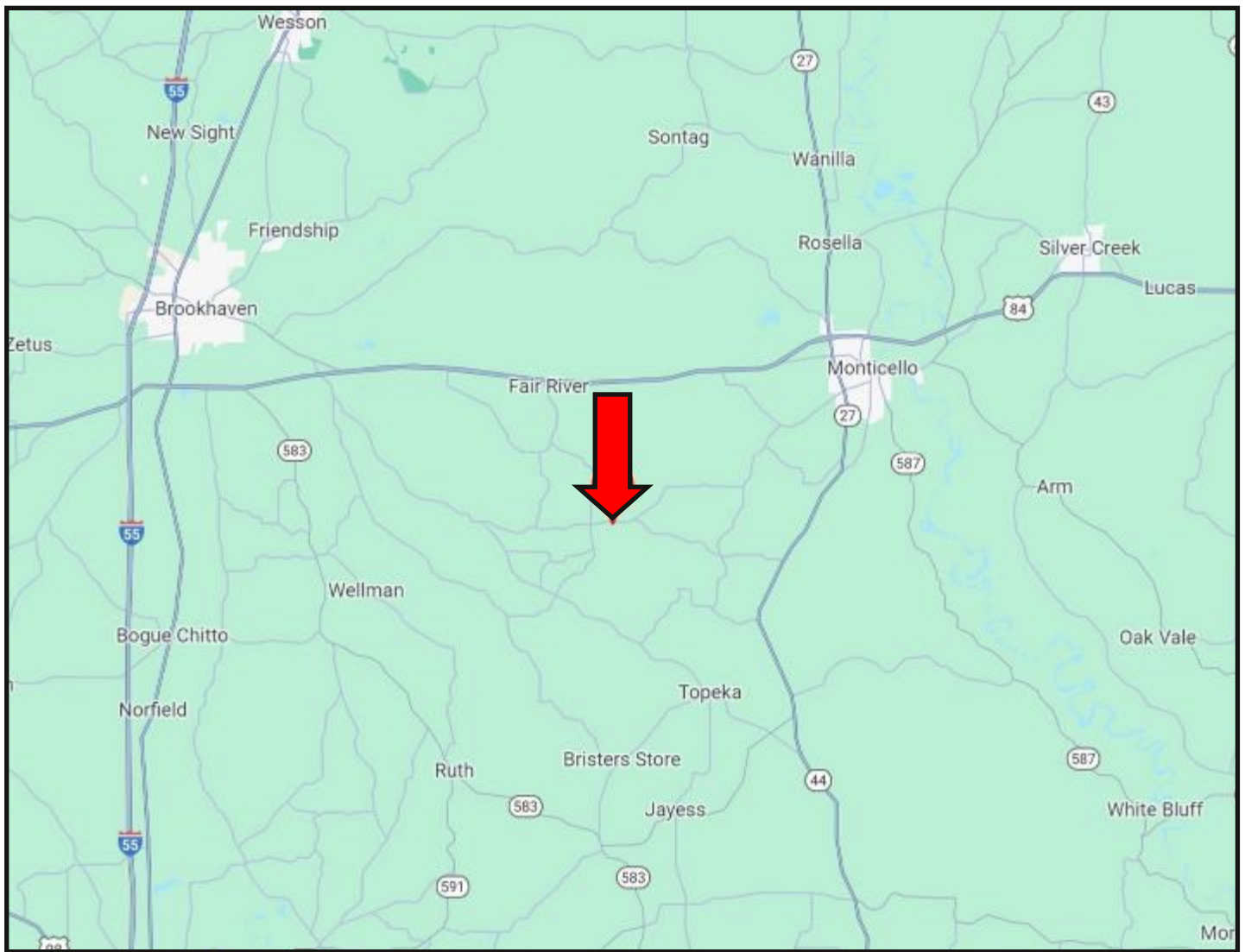


A Real Estate Expert You Can Trust

TomSmithLandandHomes.com

Information is believed to be accurate but not guaranteed.





Directional Map

Directions from the intersection of Hwy 84/ Hwy 51 in Brookhaven, MS: Travel east on Hwy 84 for 4.4 miles. Turn right onto East Lincoln Road SE. Travel 10.9 miles and the property will be on the right. [GOOGLE MAP LINK](#)



**CHAD
WILSON**
REALTOR®

Office: 601.898.2772
Cell: 601.750.1970
Chad@TomSmithLand.com



A Real Estate Expert You Can Trust

TomSmithLandandHomes.com

Information is believed to be accurate but not guaranteed.

