



36+ /- Acre Recreational Tract Lawrence County, MS



\$154,900

Are you looking for a recreational tract or a place to build in Lawrence County, MS? Look at this 36+ /- acre property on the Lincoln/ Lawrence County line. Access to this property is convenient and easy, with road frontage on E Lincoln Road and Ben Mason Road in Monticello. This one is a perfect hunting tract with established food plots. There is also an excellent internal road system to walk or ride. The majority of the property is pines with some hills. Utilities are available at the road, and it is located in Lawrence County School District. Call Eli today to schedule a viewing!

Directions from the intersection of Hwy 84/ Hwy 51 in Brookhaven, MS: Travel east on Hwy 84 for 4.4 miles. Turn right onto East Lincoln Road SE. Travel 10.9 miles and the property will be on the right. Look for the Tom Smith Land and Homes sign.



LandReport
2011-2022
AWARDED
BEST
BROKERAGES

Call me today!

ELI FERGUSON, REALTOR®
Eli@TomSmithLand.com
601.990.5070 **office** | 601.757.7117 **cell**



Expect More. Get More.

TomSmithLandandHomes.com

Information is believed to be accurate but not guaranteed.



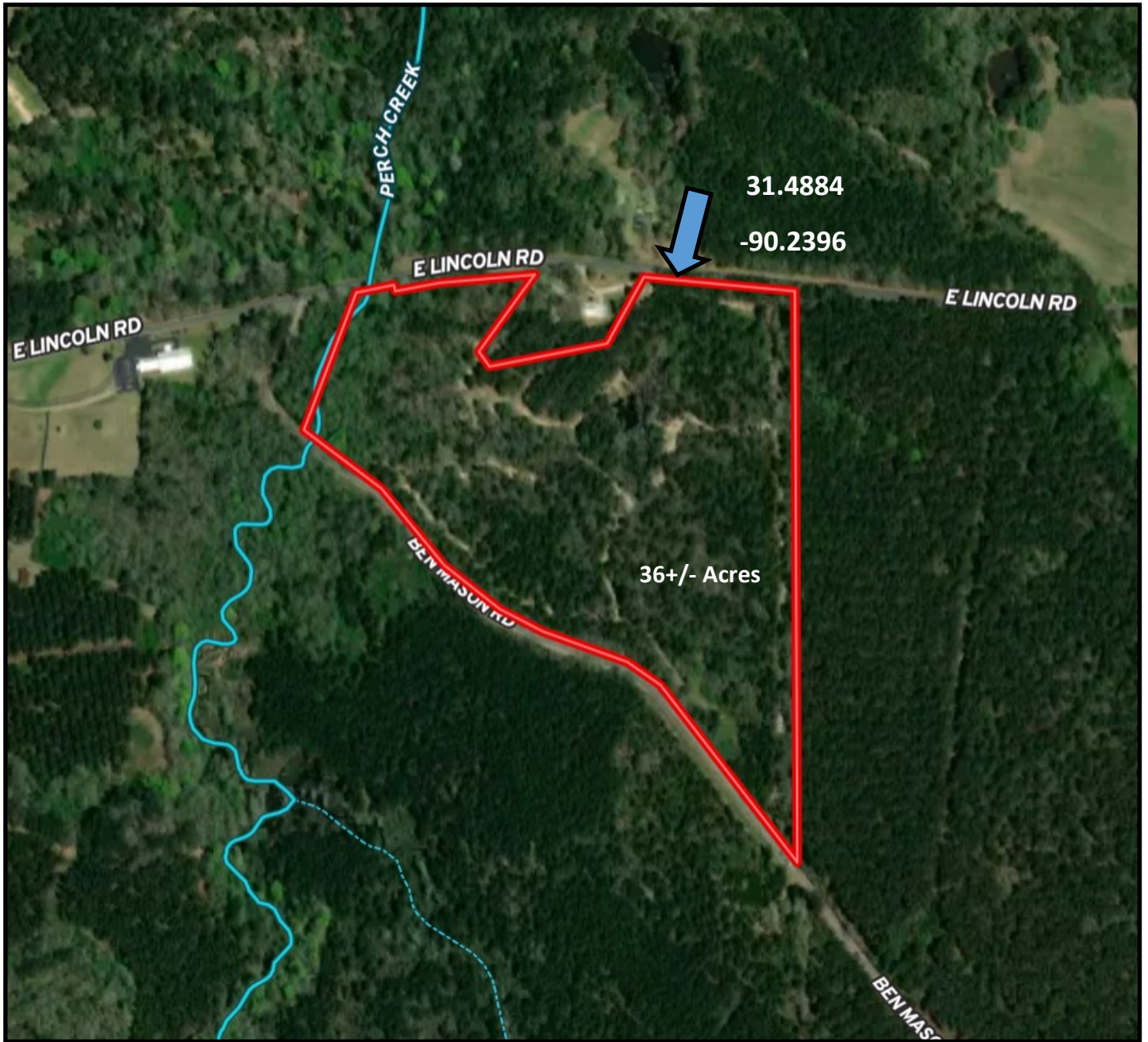
Call me today!

ELI FERGUSON, REALTOR®
Eli@TomSmithLand.com
601.990.5070 **office** | 601.757.7117 **cell**



TomSmithLandandHomes.com

Information is believed to be accurate but not guaranteed.



Aerial Map

[Click for Interactive Map](#)

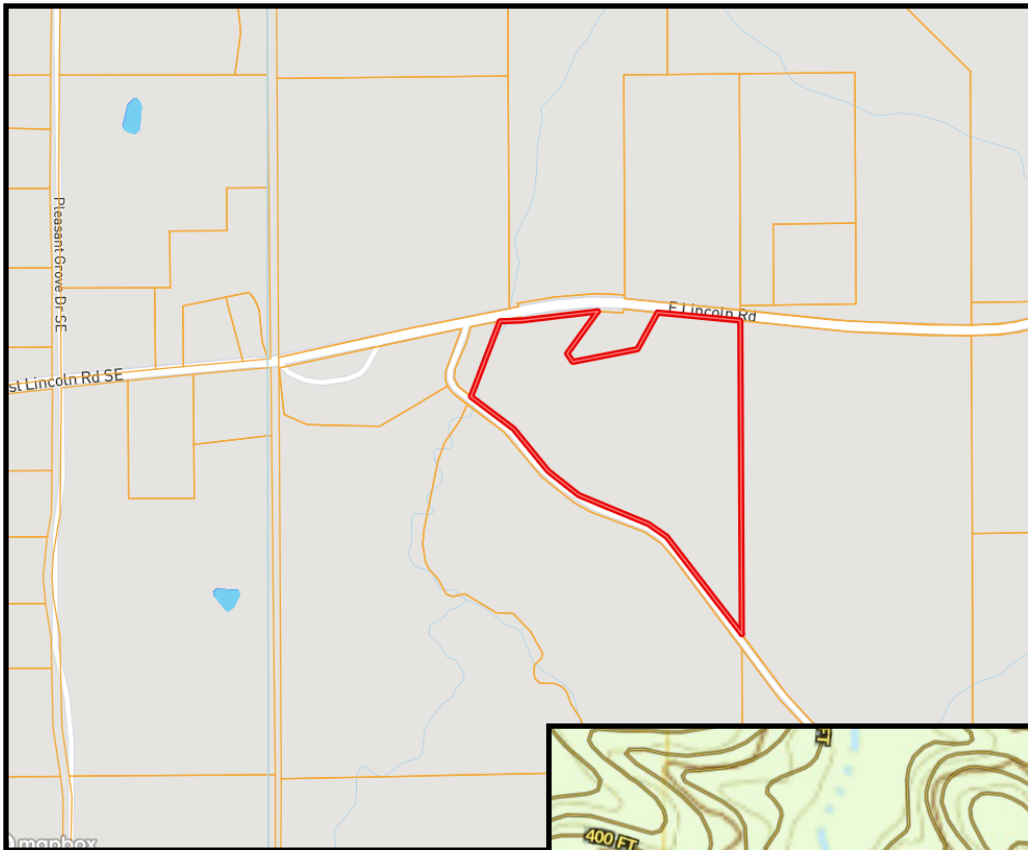
Call me today!

ELI FERGUSON, REALTOR®
Eli@TomSmithLand.com
601.990.5070 **office** | 601.757.7117 **cell**

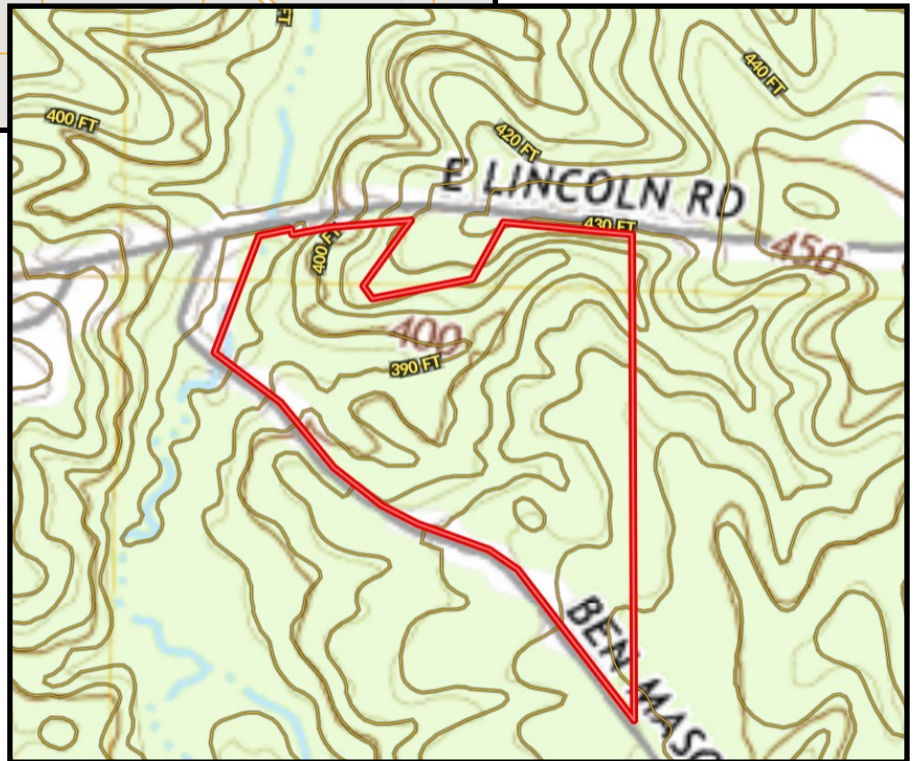


TomSmithLandandHomes.com

Information is believed to be accurate but not guaranteed.



Ownership
Map



Topo
Map



Call me today!

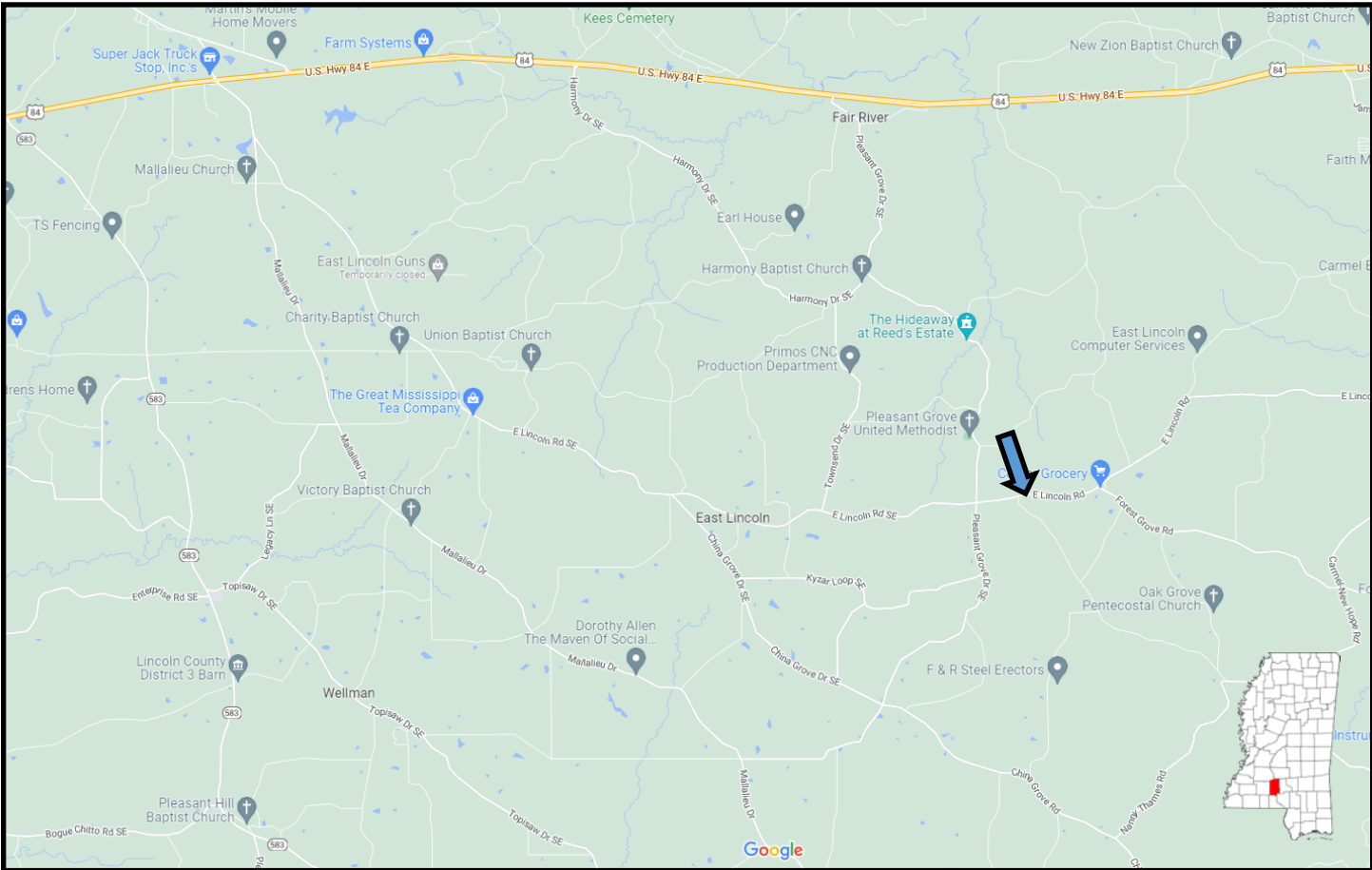
ELI FERGUSON, REALTOR®
Eli@TomSmithLand.com
601.990.5070 office | 601.757.7117 cell



TomSmithLandandHomes.com

Information is believed to be accurate but not guaranteed.

Directional Map



Directions from the intersection of Hwy 84/ Hwy 51 in Brookhaven, MS: Travel east on Hwy 84 for 4.4 miles. Turn right onto East Lincoln Road SE. Travel 10.9 miles and the property will be on the right. Look for the Tom Smith Land and Homes sign.

[Click for Google Map](#)



Call me today!

ELI FERGUSON, REALTOR®
Eli@TomSmithLand.com
601.990.5070 **office** | 601.757.7117 **cell**



Expect More. Get More.

TomSmithLandandHomes.com

Information is believed to be accurate but not guaranteed.