

# HUNTING OR TIMBER INVESTMENT 12± ACRES IN LEAKE COUNTY, MS

## \$31,800



Have you been searching for the perfect small hunting or timber investment property? This 12+/- acre property in Leake County, MS, consists primarily of hardwoods and a few pines. This tract adjoins a 34+/- acre tract that is also listed, which could easily make this an excellent 46+/- acre property. The location is ideal, within walking distance of the Pearl River and just outside the city limits of Carthage. Call Chad to schedule your private showing today!



*Call me today!*

**CHAD WILSON, REALTOR®**  
Chad@TomSmithLand.com  
601.898.2772 **office** | 601.750.1970 **cell**



## TomSmithLandandHomes.com

Information is believed to be accurate but not guaranteed.





*Call me today!*

**CHAD WILSON, REALTOR®**  
 Chad@TomSmithLand.com  
 601.898.2772 **office** | 601.750.1970 **cell**



**TomSmithLandandHomes.com**

Information is believed to be accurate but not guaranteed.





*Call me today!*

**CHAD WILSON, REALTOR®**  
 Chad@TomSmithLand.com  
 601.898.2772 **office** | 601.750.1970 **cell**

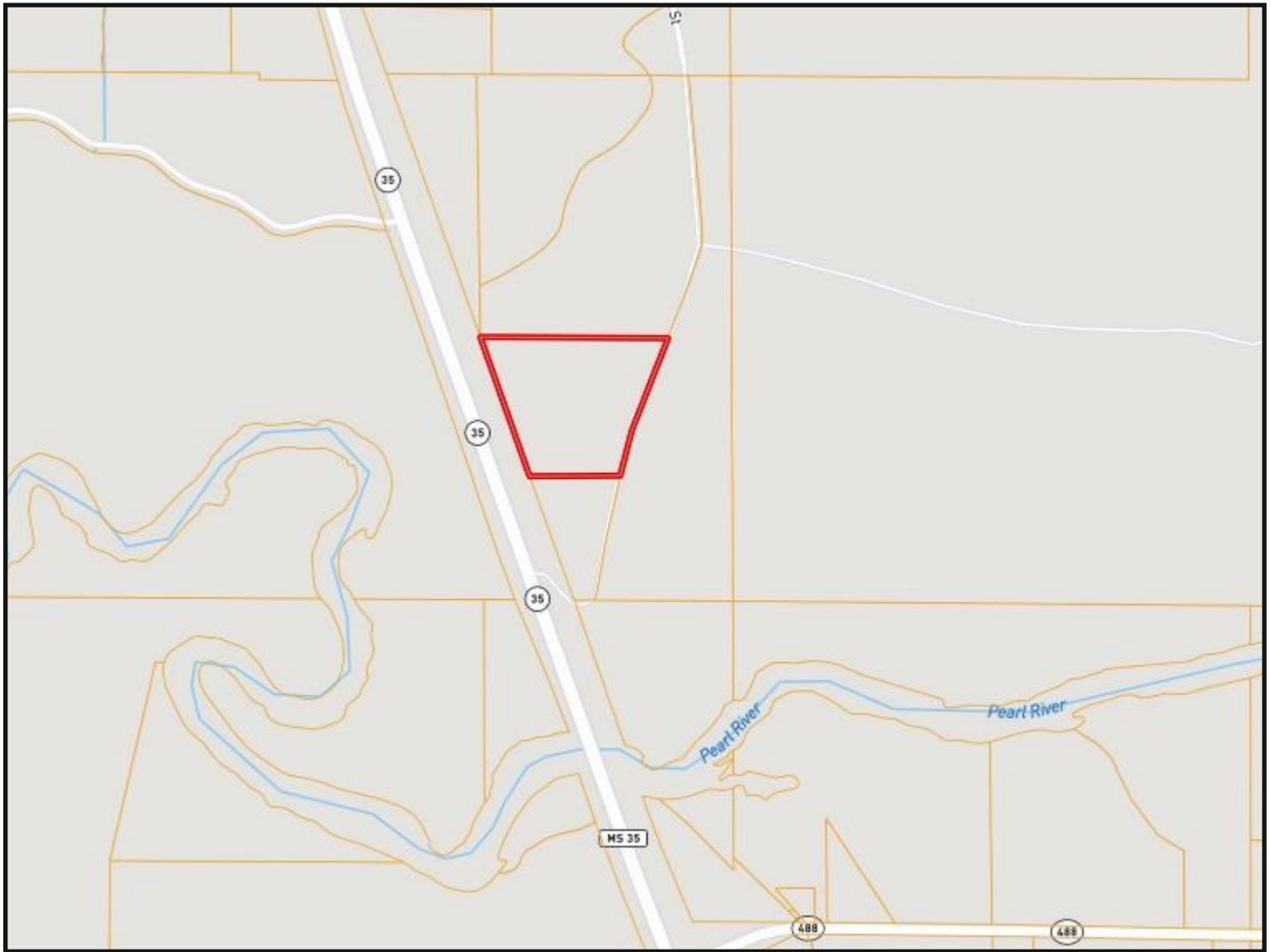


**TomSmithLandandHomes.com**

Information is believed to be accurate but not guaranteed.



# OWNERSHIP MAP



*Call me today!*

**CHAD WILSON**, REALTOR®  
Chad@TomSmithLand.com  
601.898.2772 **office** | 601.750.1970 **cell**



**TomSmithLandandHomes.com**

Information is believed to be accurate but not guaranteed.

# AERIAL MAP



[CLICK HERE FOR AN INTERACTIVE MAP](#)

*Call me today!*

**CHAD WILSON**, REALTOR®  
Chad@TomSmithLand.com  
601.898.2772 **office** | 601.750.1970 **cell**

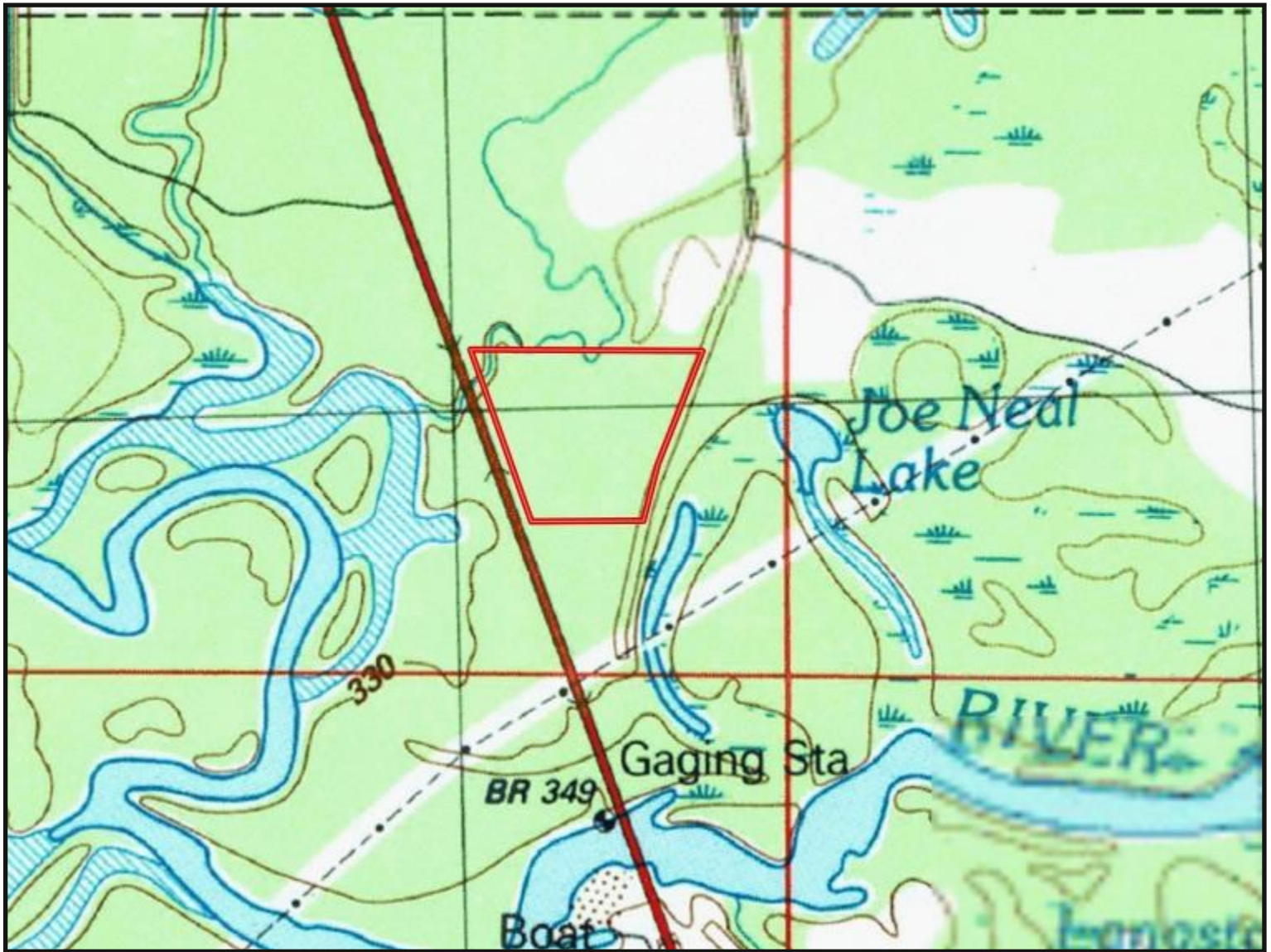


**TomSmithLandandHomes.com**

Information is believed to be accurate but not guaranteed.



# TOPO MAP



*Call me today!*

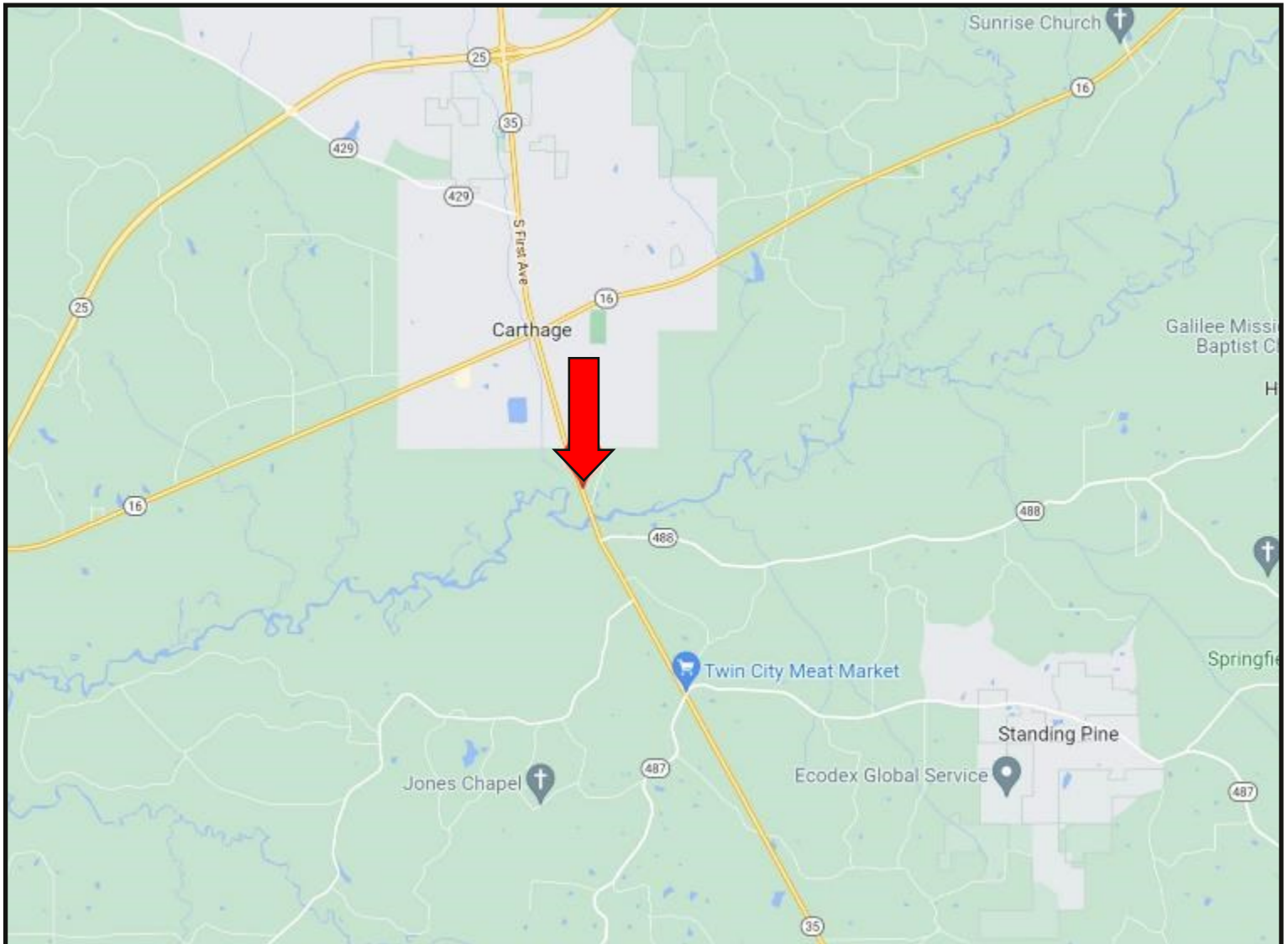
**CHAD WILSON**, REALTOR®  
Chad@TomSmithLand.com  
601.898.2772 **office** | 601.750.1970 **cell**



**TomSmithLandandHomes.com**

Information is believed to be accurate but not guaranteed.

# DIRECTIONAL MAP



DIRECTIONS FROM HWY 16 AND HWY 35 IN CARTHAGE, MS: Travel Hwy 35 south for 1.5 miles. The entrance to the property will be on your left. [GOOGLE MAP LINK](#)



*Call me today!*

**CHAD WILSON, REALTOR®**  
Chad@TomSmithLand.com  
601.898.2772 **office** | 601.750.1970 **cell**



**TomSmithLandandHomes.com**

Information is believed to be accurate but not guaranteed.