

4.98+/- COMMERCIALLY ZONED ACRES LOCATED IN STARKVILLE OKTIBBEHA COUNTY, MS



\$747,000

DEVELOPERS, THIS ONE IS FOR YOU!!! Look at this 4.98+/- surveyed commercial acre property in Oktibbeha County, MS. The property is in the city limits of Starkville and features 419 feet of frontage on Hwy 25 South. This property is unique as it is in proximity to the City of Starkville's latest development, Cornerstone Park! Cornerstone Park is a 124+/- acre athletic complex set to open in 2023. This park will be the newest destination in the Southeast for elite sports, recreation, and events. This property is also located near Hwy 12. Hwy 12 is home to Wal-Mart, Kroger, Lowe's, George Bryan Airport, and other major retailers just east of this property. The superior visibility and incredible location make this a perfect site for a hotel, restaurant, retail shopping center, or gas station. This property is zoned commercial and will need to be developed according to the City of Starkville specifications and guidelines. Utilities for the property are available. For more details and to schedule a showing, call Michael Halfacre or Michael Cooper today!

Directions from Wal-Mart on Hwy 12 in Starkville, MS: Travel approximately .5 miles west and take the Hwy 25 South exit. Travel approximately 0.6 miles and turn left, crossing the Hwy 25 median. Property will be on your right. [GOOGLE MAP LINK](#)



MICHAEL HALFACRE, MANAGING BROKER
MHalfacre@TomSmithLand.com
662.268.6333 office | 662.242.4220 cell



Call us today!



MICHAEL COOPER, REALTOR*
MCooper@TomSmithLand.com
662.268.6333 office | 662.285.8686 cell

TomSmithLandandHomes.com

Information is believed to be accurate but not guaranteed.





MICHAEL HALFACRE, MANAGING BROKER
 MHalfacre@TomSmithLand.com
 662.268.6333 office | 662.242.4220 cell



MICHAEL COOPER, REALTOR®
 MCooper@TomSmithLand.com
 662.268.6333 office | 662.285.8686 cell

TomSmithLandandHomes.com

Information is believed to be accurate but not guaranteed.





MICHAEL HALFACRE, MANAGING BROKER
 MHalfacre@TomSmithLand.com
 662.268.6333 office | 662.242.4220 cell



MICHAEL COOPER, REALTOR®
 MCooper@TomSmithLand.com
 662.268.6333 office | 662.285.8686 cell

TomSmithLandandHomes.com

Information is believed to be accurate but not guaranteed.





MICHAEL HALFACRE, MANAGING BROKER
 MHalfacre@TomSmithLand.com
 662.268.6333 office | 662.242.4220 cell



MICHAEL COOPER, REALTOR®
 MCooper@TomSmithLand.com
 662.268.6333 office | 662.285.8686 cell

TomSmithLandandHomes.com

Information is believed to be accurate but not guaranteed.



Interactive Aerial Map



MICHAEL HALFACRE, MANAGING BROKER
MHalfacre@TomSmithLand.com
662.268.6333 office | 662.242.4220 cell

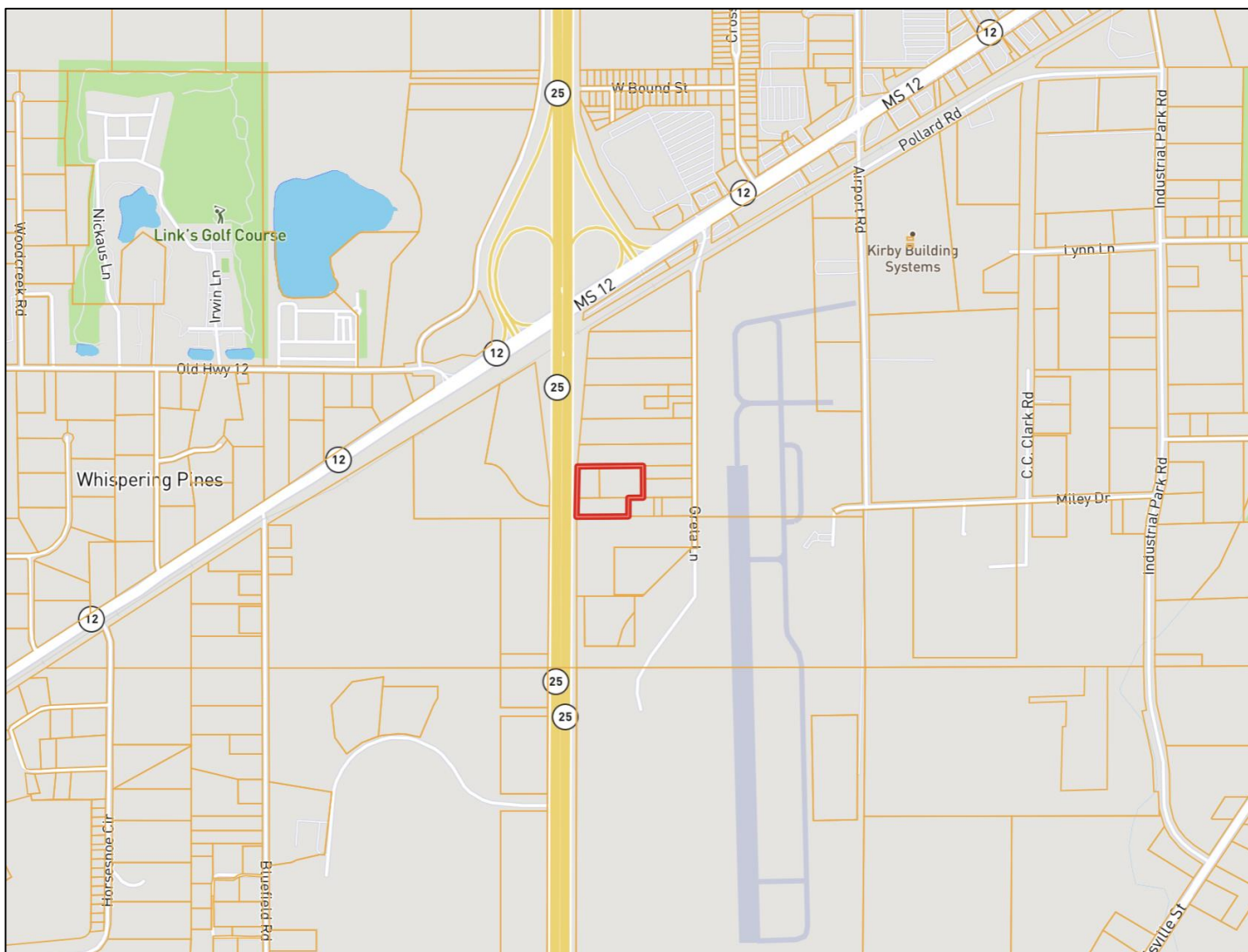
MICHAEL COOPER, REALTOR®
MCooper@TomSmithLand.com
662.268.6333 office | 662.285.8686 cell

TomSmithLandandHomes.com

Information is believed to be accurate but not guaranteed.



Ownership Map



MICHAEL HALFACRE, MANAGING BROKER
MHalfacre@TomSmithLand.com
662.268.6333 office | 662.242.4220 cell

MICHAEL COOPER, REALTOR®
MCooper@TomSmithLand.com
662.268.6333 office | 662.285.8686 cell

TomSmithLandandHomes.com

Information is believed to be accurate but not guaranteed.



Soil Map and Soil Description



MICHAEL HALFACRE, MANAGING BROKER
 MHalfacre@TomSmithLand.com
 662.268.6333 office | 662.242.4220 cell

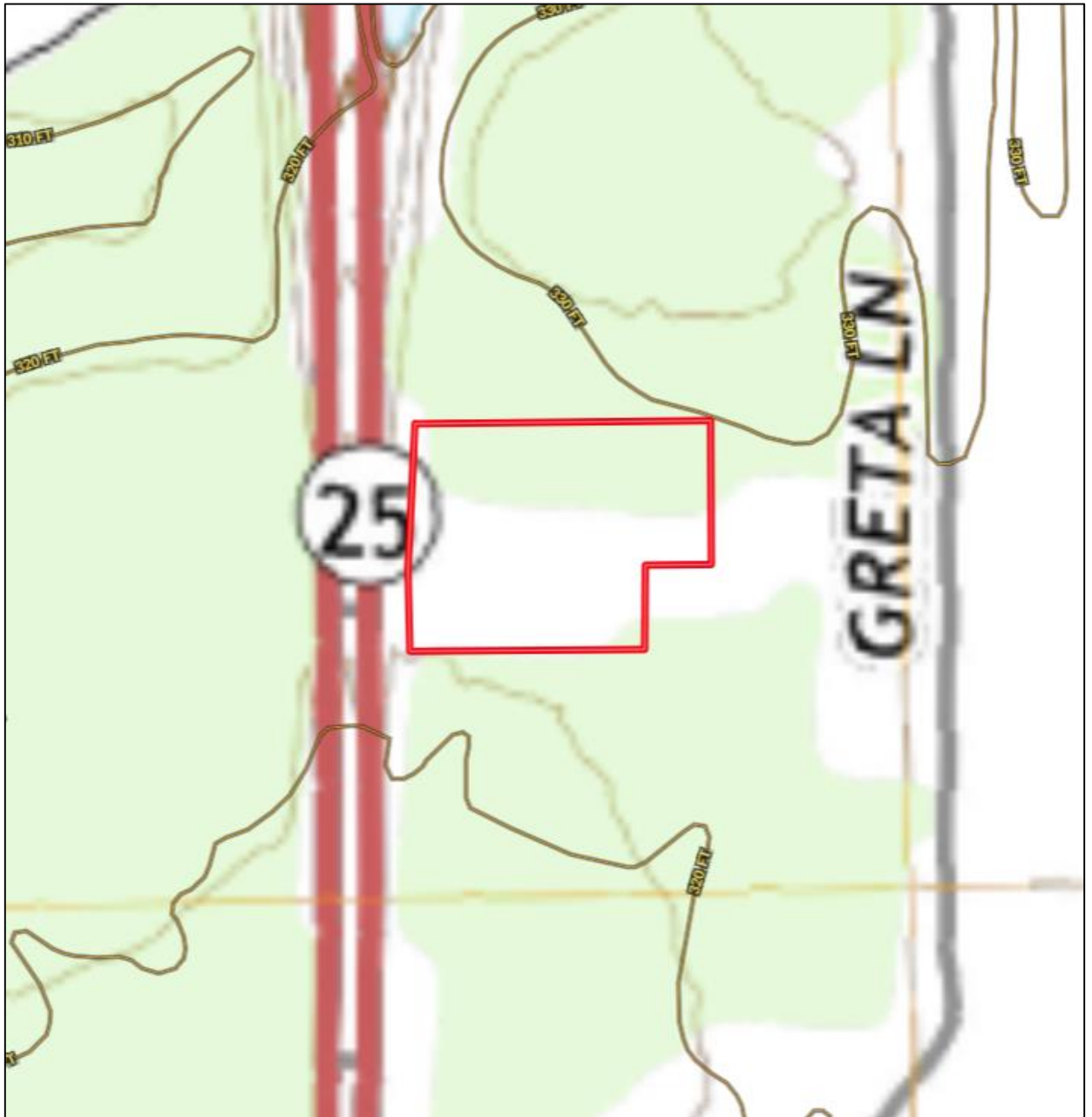
MICHAEL COOPER, REALTOR®
 MCooper@TomSmithLand.com
 662.268.6333 office | 662.285.8686 cell

TomSmithLandandHomes.com

Information is believed to be accurate but not guaranteed.



Topographical Map



MICHAEL HALFACRE, MANAGING BROKER
MHalfacre@TomSmithLand.com
662.268.6333 office | 662.242.4220 cell

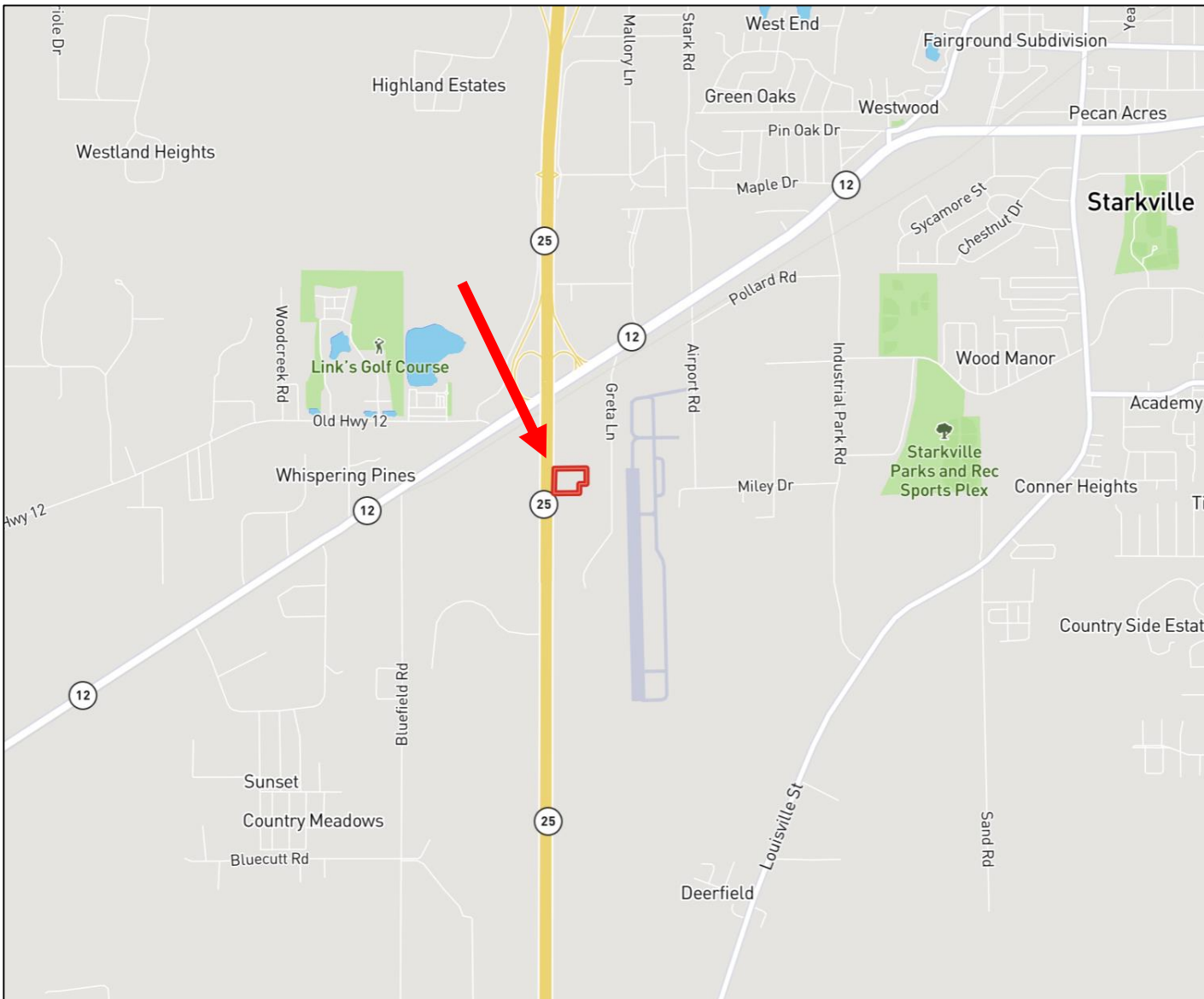
MICHAEL COOPER, REALTOR®
MCooper@TomSmithLand.com
662.268.6333 office | 662.285.8686 cell

TomSmithLandandHomes.com

Information is believed to be accurate but not guaranteed.



Directional Map



Directions from Wal-Mart on Hwy 12 in Starkville, MS: Travel approximately .5 miles west and take the Hwy 25 South exit. Travel approximately 0.6 miles and turn left, crossing the Hwy 25 median. Property will be on your right.

[GOOGLE MAP LINK](#)



MICHAEL HALFACRE, MANAGING BROKER
MHalfacre@TomSmithLand.com
662.268.6333 office | 662.242.4220 cell

MICHAEL COOPER, REALTOR®
MCooper@TomSmithLand.com
662.268.6333 office | 662.285.8686 cell

TomSmithLandandHomes.com

Information is believed to be accurate but not guaranteed.

