

Lot #13 in Chatmoss Gated Community in Cleveland, MS

\$65,000



This is the perfect opportunity to build your dream home! This 0.48± acre, ready-to-build lot is within the exclusive Hunter Cove, the only gated community in Cleveland. Situated just outside town limits in Bolivar County, this prime location offers a perfect blend of tranquility and accessibility to nearby amenities. City water and sewage services are already in place, and the lot comes with build-out covenants (available upon request from the listing agent). If you are ready to build your dream home, call Tracey Bell to schedule your private showing!



TRACEY
BELL

MANAGING BROKER

Office: 662.441.2500

Cell: 662.719.4720

Tracey@TomSmithLand.com



A Real Estate Expert You Can Trust

TomSmithLandandHomes.com

Information is believed to be accurate but not guaranteed.





TRACEY BELL

MANAGING BROKER

Office: 662.441.2500

Cell: 662.719.4720

Tracey@TomSmithLand.com

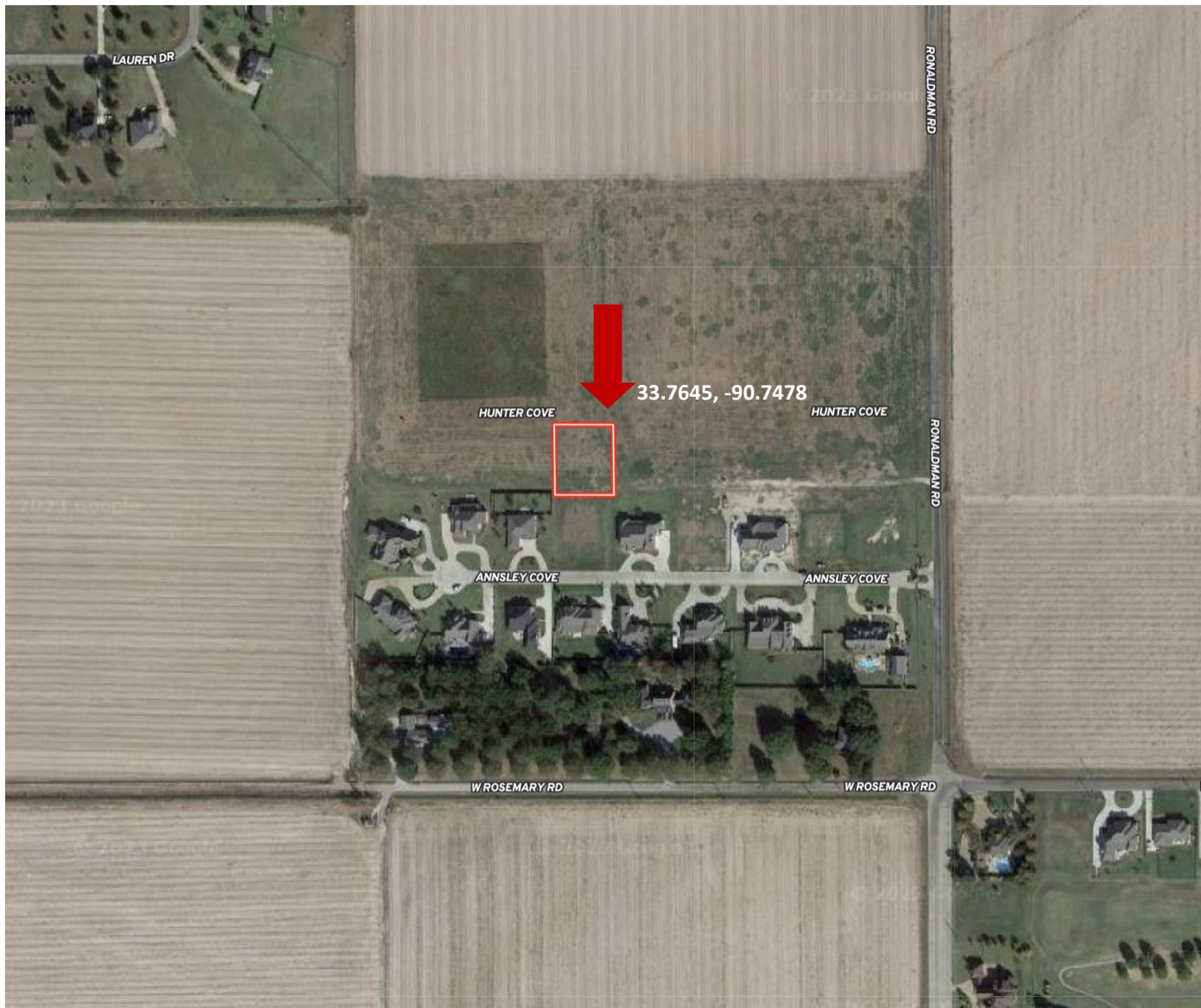


A Real Estate Expert You Can Trust
TomSmithLandandHomes.com

Information is believed to be accurate but not guaranteed.



AERIAL MAP



[Click for Interactive Map](#)

TRACEY
BELL

MANAGING BROKER

Office: 662.441.2500

Cell: 662.719.4720

Tracey@TomSmithLand.com

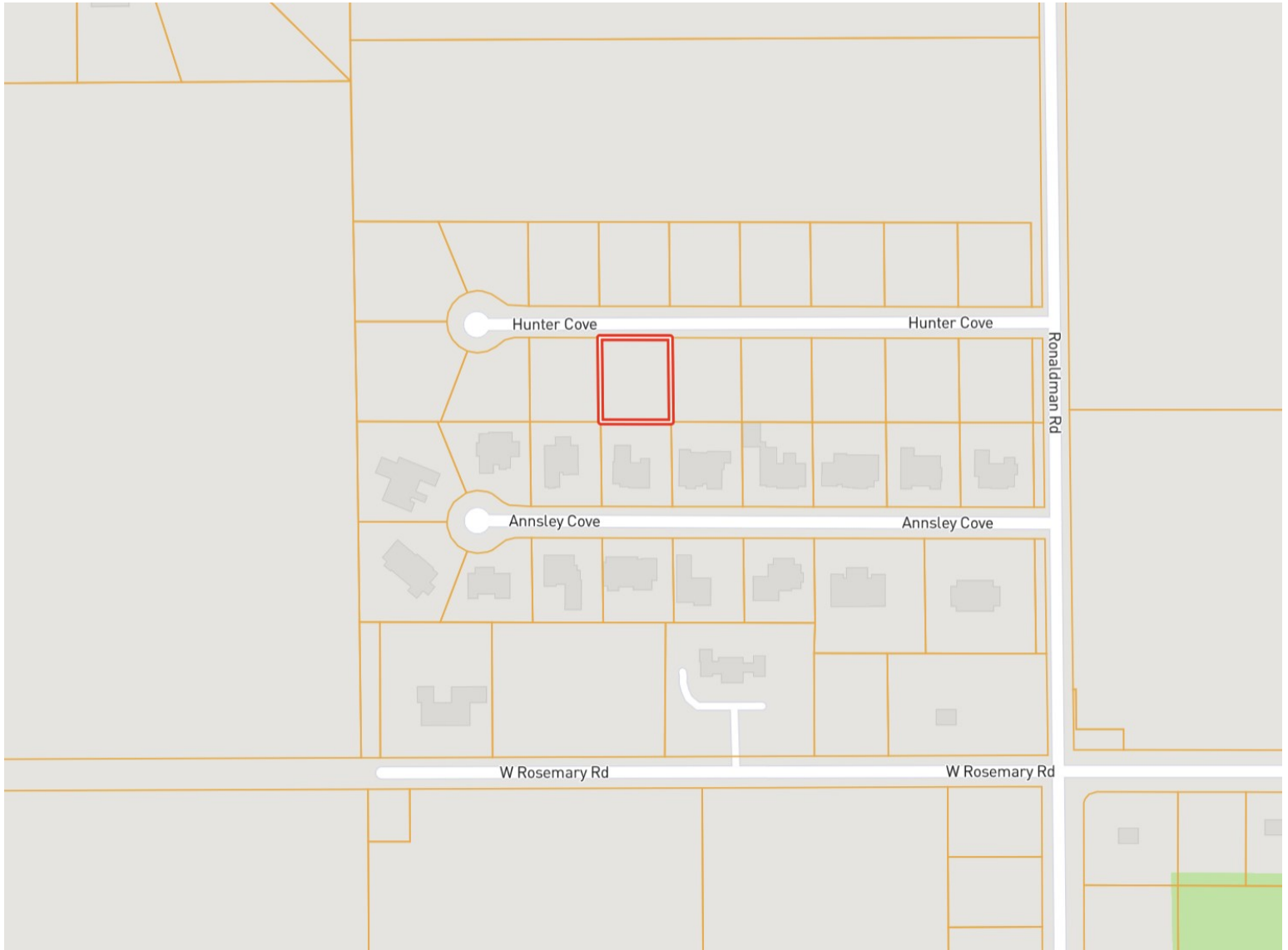


A Real Estate Expert You Can Trust
TomSmithLandandHomes.com

Information is believed to be accurate but not guaranteed.

LandReport
2011-2023
BEST
BROKERAGES

OWNERSHIP MAP



TRACEY
BELL

MANAGING BROKER

Office: 662.441.2500

Cell: 662.719.4720

Tracey@TomSmithLand.com

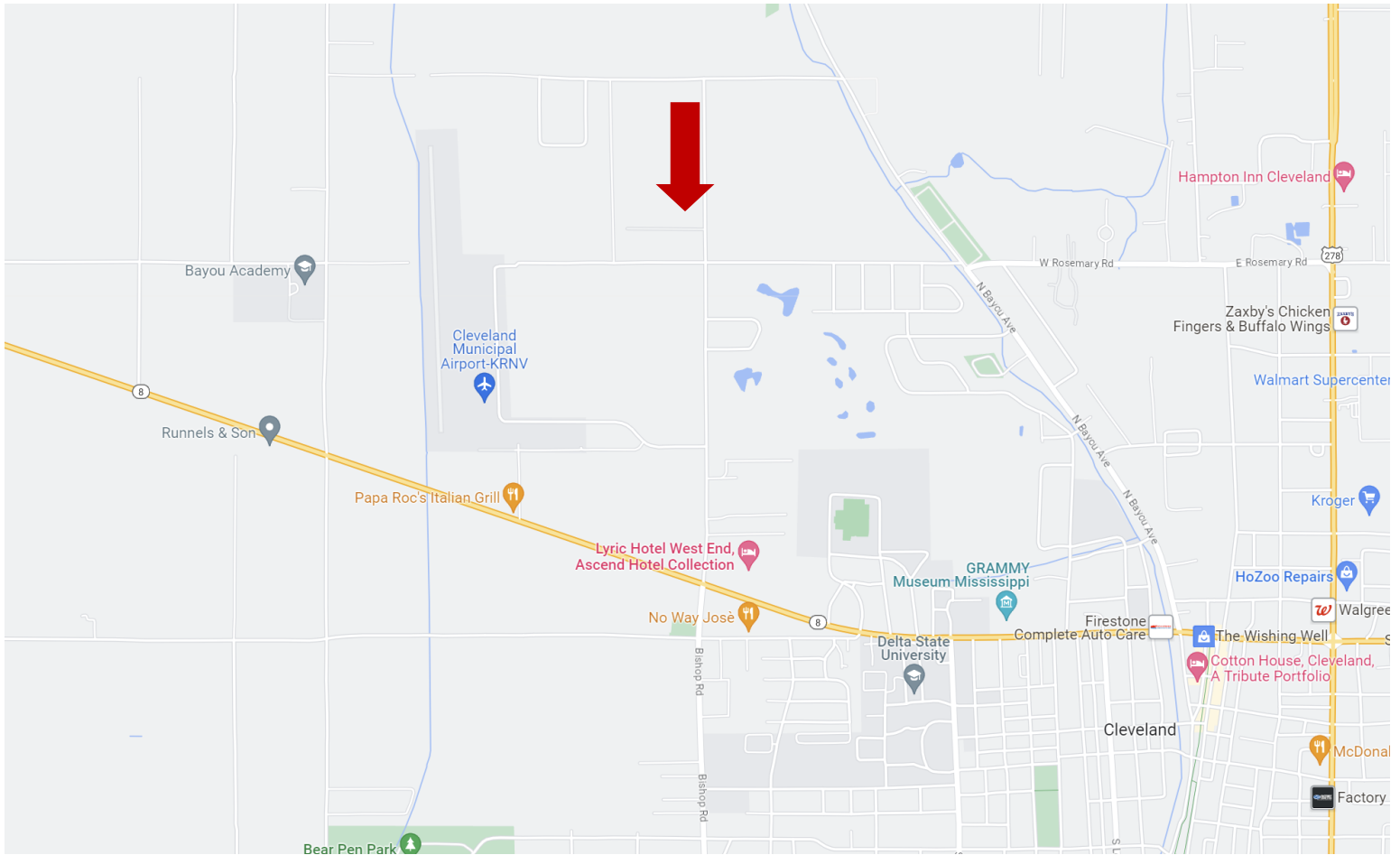


A Real Estate Expert You Can Trust
TomSmithLandandHomes.com

Information is believed to be accurate but not guaranteed.



DIRECTIONAL MAP



Address: Lot #13 Chatmoss 2nd Addition Hunter Cove, Cleveland, MS 38732

Directions from Hwy 8 and Hwy 61 Cleveland, MS: Travel west on HWY 8 for 0.4 miles. Turn right onto N Bayou Road and travel 1.2 miles. Turn left onto Rosemary Road, then in 0.7 miles turn right on Ronaldman Road. The property will be on the left. [Click for Google Maps.](#)



**TRACEY
BELL**

MANAGING BROKER

Office: 662.441.2500

Cell: 662.719.4720

Tracey@TomSmithLand.com



A Real Estate Expert You Can Trust

TomSmithLandandHomes.com

Information is believed to be accurate but not guaranteed.

