

# Lot #14 in Chatmoss Gated Community in Cleveland, MS

\$63,500



This is the perfect opportunity to build your dream home! This 0.5± acre, ready-to-build lot is within the exclusive Hunter Cove, the only gated community in Cleveland. Situated just outside town limits in Bolivar County, this prime location offers a perfect blend of tranquility and accessibility to nearby amenities. City water and sewage services are already in place, and the lot comes with build-out covenants (available upon request from the listing agent). If you are ready to build your dream home, call Tracey Bell to schedule your private showing!



**TRACEY  
BELL**

MANAGING BROKER

Office: 662.441.2500

Cell: 662.719.4720

Tracey@TomSmithLand.com



**A Real Estate Expert You Can Trust**

TomSmithLandandHomes.com

Information is believed to be accurate but not guaranteed.





## TRACEY BELL

MANAGING BROKER

Office: 662.441.2500

Cell: 662.719.4720

[Tracey@TomSmithLand.com](mailto:Tracey@TomSmithLand.com)

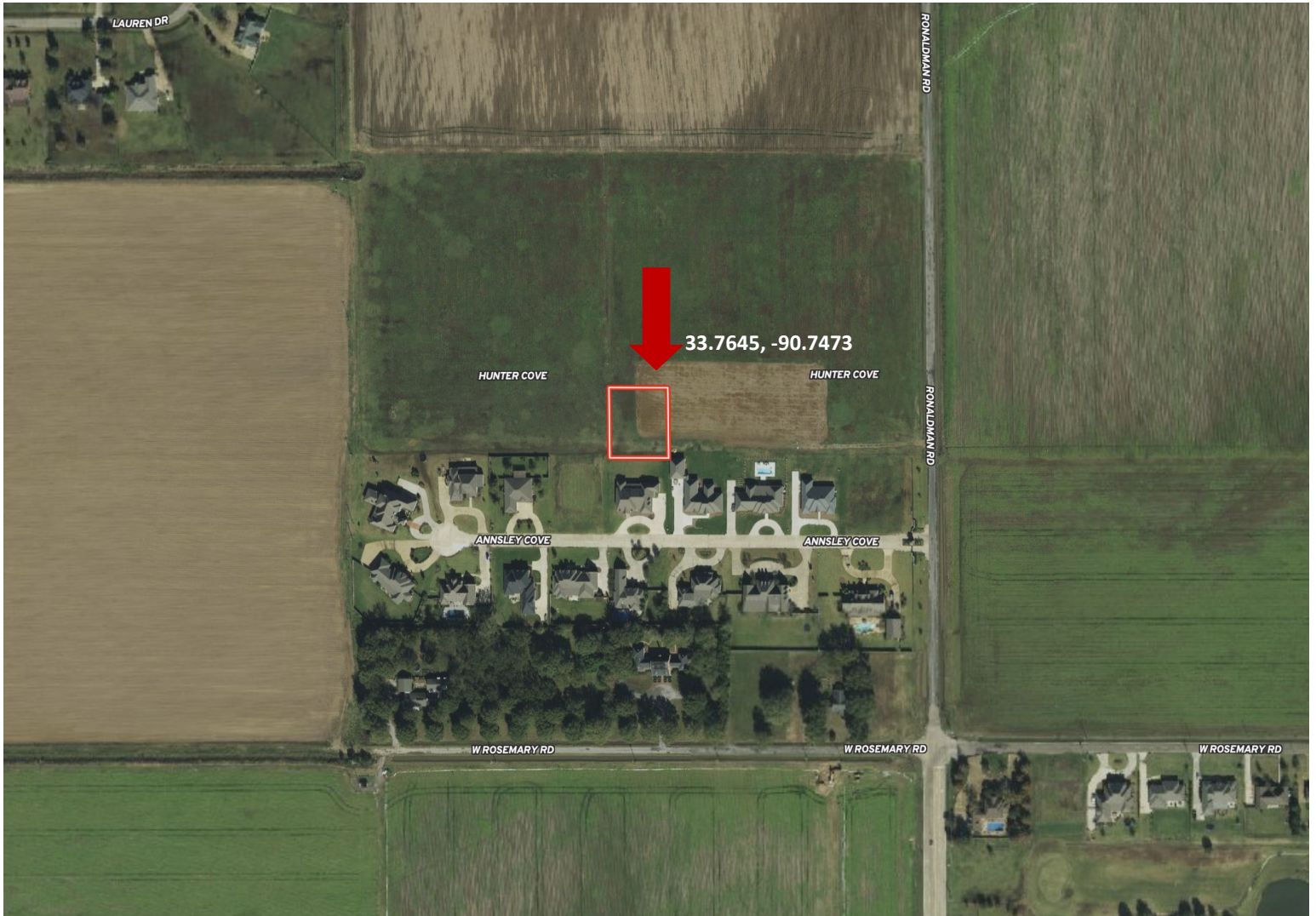


**A Real Estate Expert You Can Trust**  
[TomSmithLandandHomes.com](http://TomSmithLandandHomes.com)

Information is believed to be accurate but not guaranteed.



# AERIAL MAP



[Click for Interactive Map](#)

TRACEY  
**BELL**

MANAGING BROKER

Office: 662.441.2500

Cell: 662.719.4720

Tracey@TomSmithLand.com

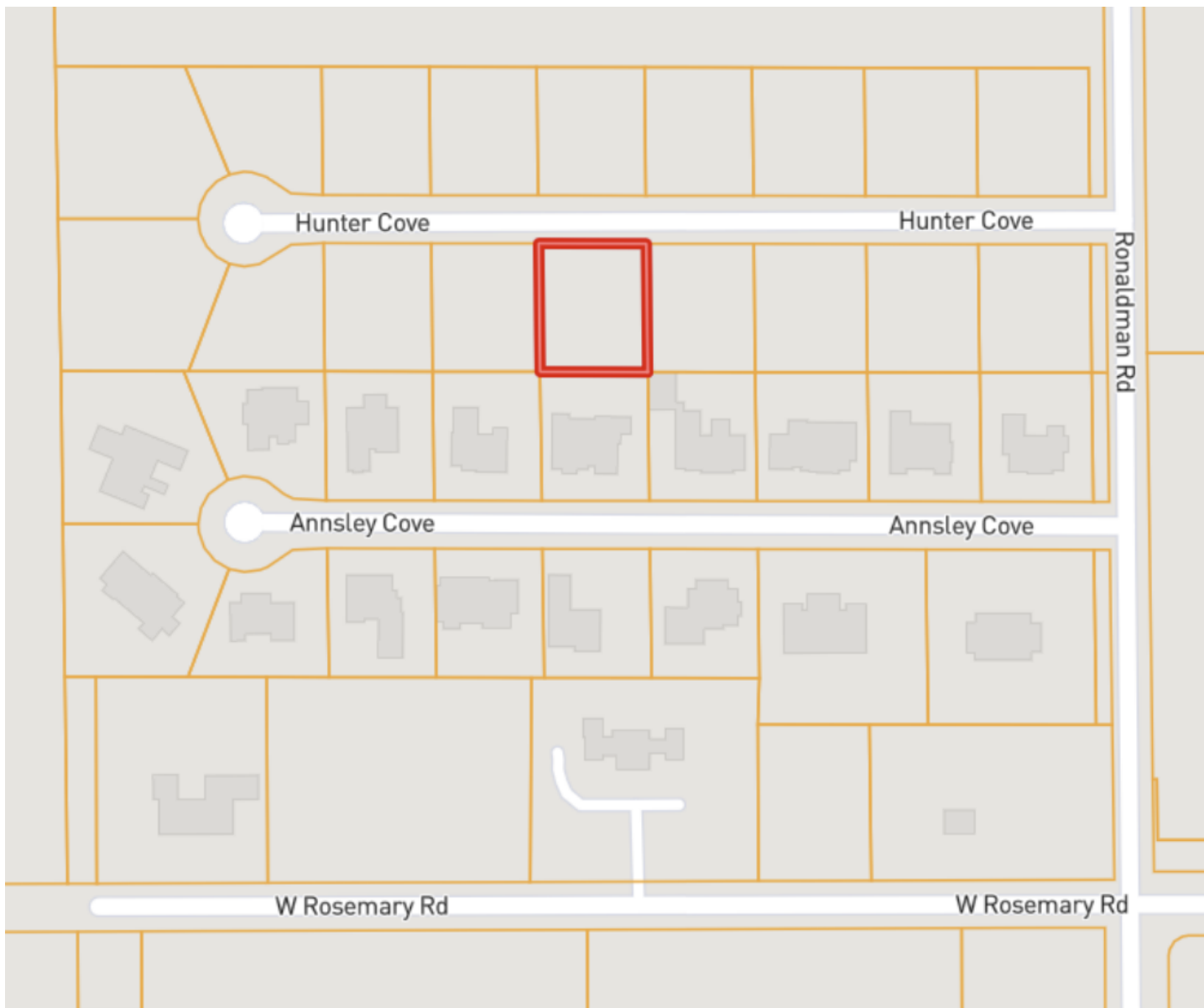


A Real Estate Expert You Can Trust  
TomSmithLandandHomes.com

Information is believed to be accurate but not guaranteed.

LandReport  
2011-2023  
BEST  
BROKERAGES

# OWNERSHIP MAP



TRACEY  
**BELL**

MANAGING BROKER

Office: 662.441.2500

Cell: 662.719.4720

Tracey@TomSmithLand.com

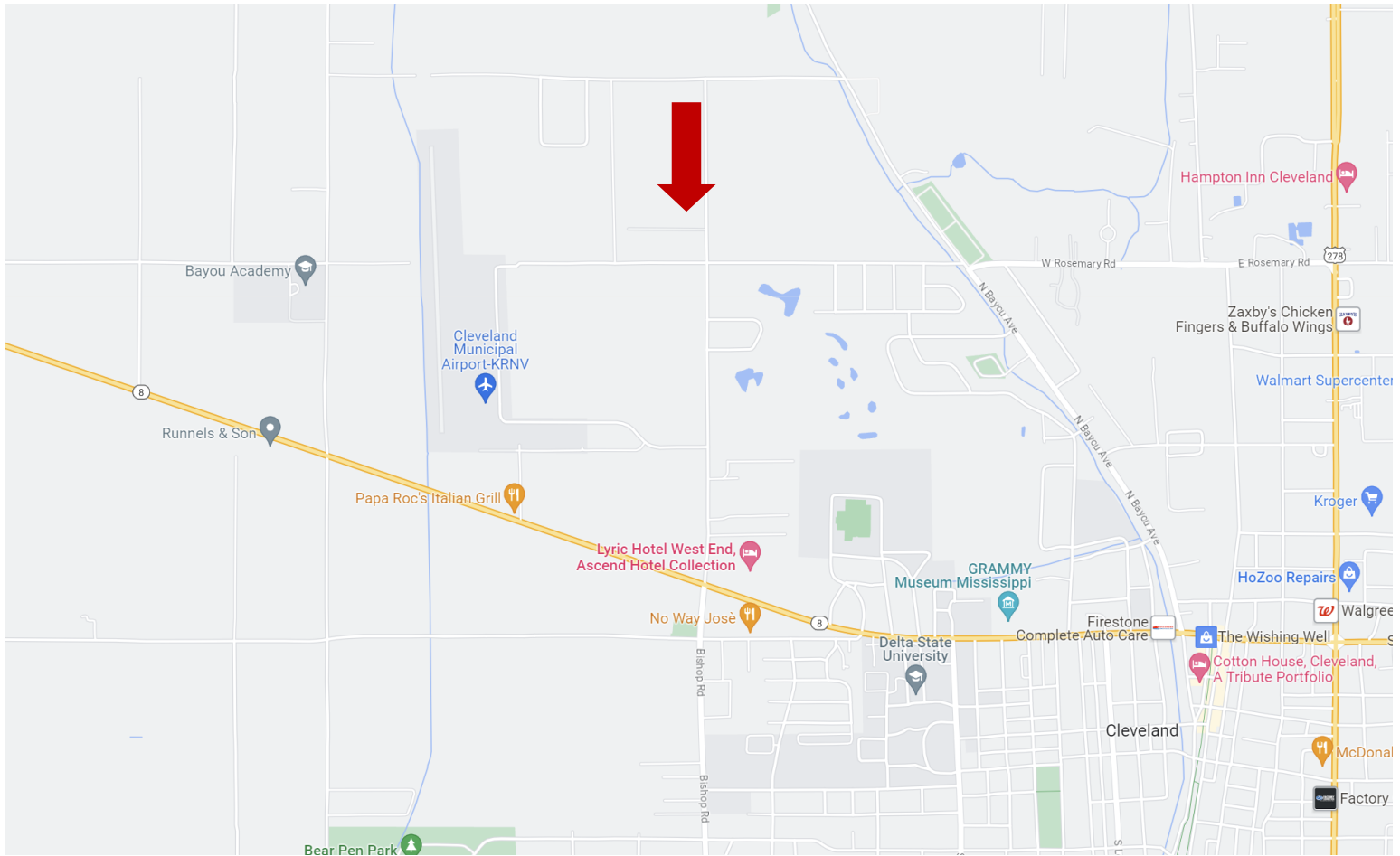


A Real Estate Expert You Can Trust  
TomSmithLandandHomes.com

Information is believed to be accurate but not guaranteed.



# DIRECTIONAL MAP



**Address: Lot #14 Chatmoss 2nd Addition Hunter Cove, Cleveland, MS 38732**

**Directions from Hwy 8 and Hwy 61 Cleveland, MS:** Travel west on HWY 8 for 0.4 miles. Turn right onto N Bayou Road and travel 1.2 miles. Turn left onto Rosemary Road, then in 0.7 miles turn right on Ronaldman Road. The property will be on the left. [Click for Google Maps.](#)



**TRACEY  
BELL**

MANAGING BROKER

Office: 662.441.2500

Cell: 662.719.4720

Tracey@TomSmithLand.com



**A Real Estate Expert You Can Trust**

TomSmithLandandHomes.com

Information is believed to be accurate but not guaranteed.

