

Lot 14 Chatmoss in Cleveland Bolivar County, MS



\$65,000

Address: Lot Number 14 Chatmoss 2nd Add Hunter Cove, Cleveland, MS 38732

This 0.5+/- acre, ready to build lot is located in the only gated community in Cleveland, Bolivar County. Hunter Cove is located right outside of town but close to all of the amenities. This lot includes city water and sewage and has build out covenants, see listing agent for a copy. If you are ready to build your dream home, call Tracey today! (662)719-4720 or (662)441-2500

Directions from the intersection of Hwy 61 and Hwy 8 in Cleveland, MS: Travel West on Hwy 8 for 0.4 miles and turn right onto North Bayou Road. In 1.2 miles turn left onto Rosemary Rd, then in 0.7 miles turn right on Ronaldman Rd also known as N. Bishop Rd. and in 0.2 miles the destination will be on the left. [Click for Google Map Directions.](#)



Call me today!

TRACEY BELL, MANAGING BROKER
Tracey@TomSmithLand.com
662.441.2500 **office** | 662.719.4720 **cell**



TomSmithLandandHomes.com

Information is believed to be accurate but not guaranteed.



Call me today!

TRACEY BELL, MANAGING BROKER
Tracey@TomSmithLand.com
662.441.2500 **office** | 662.719.4720 **cell**



TomSmithLandandHomes.com

Information is believed to be accurate but not guaranteed.

AERIAL MAP



[Click for Interactive Map](#)

Call me today!

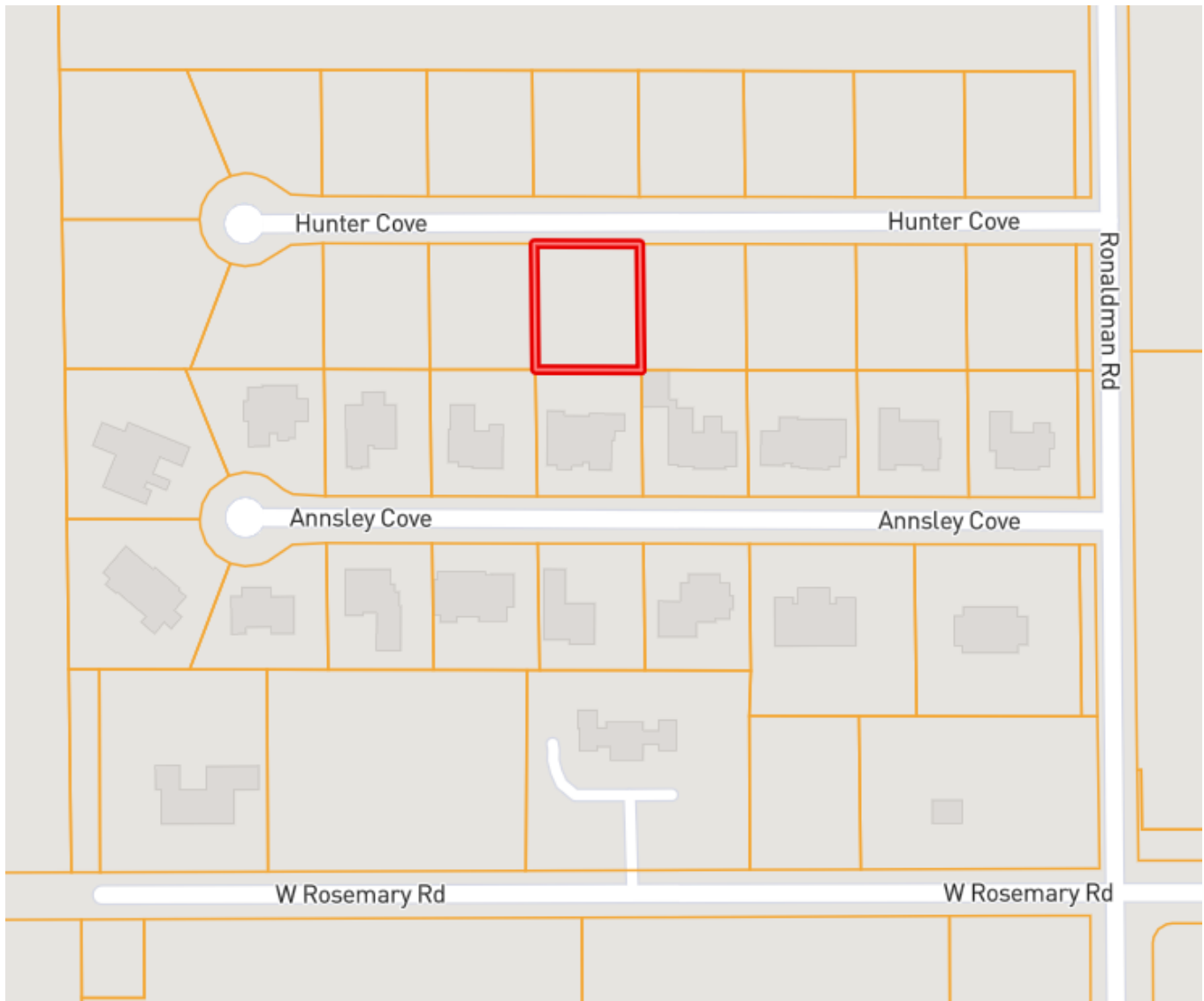
TRACEY BELL, MANAGING BROKER
Tracey@TomSmithLand.com
662.441.2500 **office** | 662.719.4720 **cell**



TomSmithLandandHomes.com

Information is believed to be accurate but not guaranteed.

OWNERSHIP MAP



Call me today!

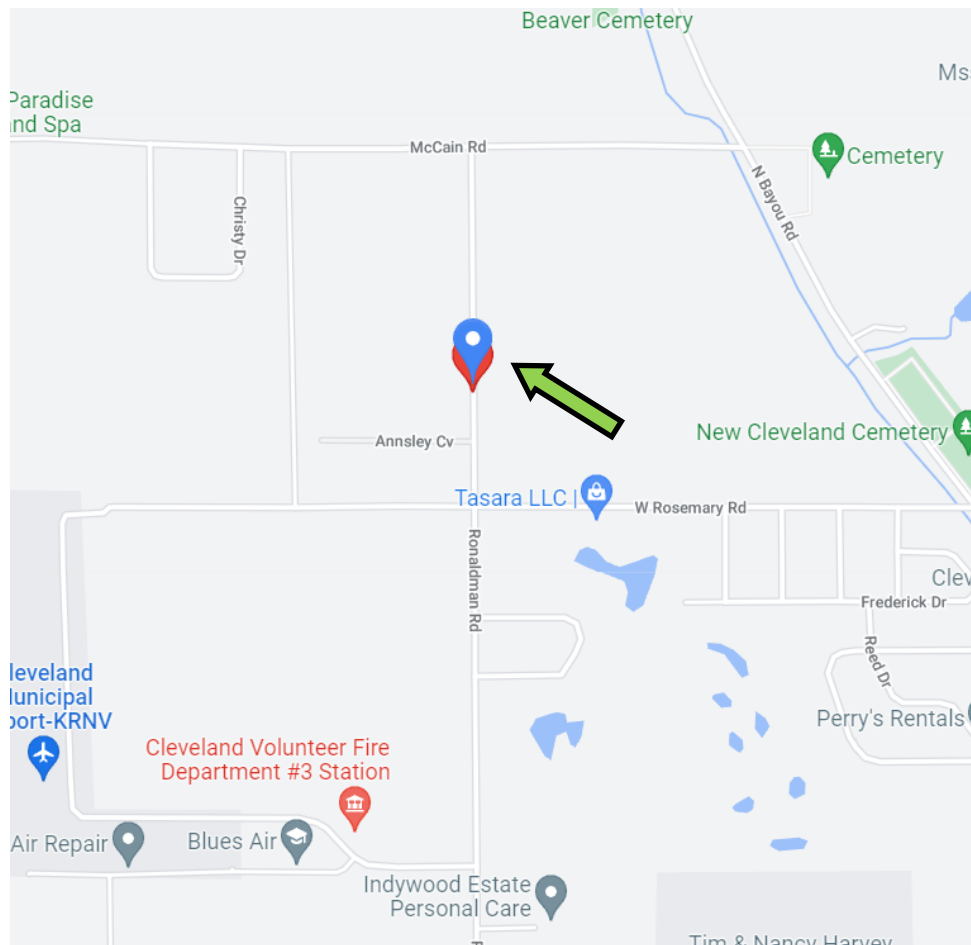
TRACEY BELL, MANAGING BROKER
Tracey@TomSmithLand.com
662.441.2500 **office** | 662.719.4720 **cell**



TomSmithLandandHomes.com

Information is believed to be accurate but not guaranteed.

DIRECTIONAL MAP



Address: Lot Number 14 Chatmoss 2nd Addition Hunter Cove, Cleveland, MS 38732

Directions from the intersection of Hwy 61 and Hwy 8 in Cleveland, MS: Travel West on Hwy 8 for 0.4 miles and turn right onto North Bayou Road. In 1.2 miles turn left onto Rosemary Rd, then in 0.7 miles turn right on Ronaldman Rd also known as N. Bishop Rd. and in 0.2 miles the destination will be on the left. [Click for Google Map Directions.](#)



Call me today!

TRACEY BELL, MANAGING BROKER
Tracey@TomSmithLand.com
662.441.2500 **office** | 662.719.4720 **cell**



TomSmithLandandHomes.com

Information is believed to be accurate but not guaranteed.