

Lovely Cottage Minutes from the Beach Harrison County, MS



Check out this lovely cottage just minutes from the beach! Don't miss out on this property in Harrison County, MS. This one bedroom, one bath, 400 +/- sq ft cottage is conveniently located on Saucier Avenue in the golf cart district and only blocks away from restaurants, boutiques, galleries, Pass Christian Harbor and the beach. HOA dues apply. Call Tara today to schedule a viewing!

Directions from the intersection of E Beach Blvd and Davis Ave in Pass Christian, MS:
Turn right onto Davis Ave and travel 0.1 miles. Turn left onto E 2nd Street and travel 472 feet. Turn right onto Saucier Ave. After 243 feet, the home will be on the left.



Call me today!

TARA WALKER SMITH, REALTOR®
Tara@TomSmithHomes.com
601.990.5070 office | 601.407.4315 cell



TomSmithLandandHomes.com

Information is believed to be accurate but not guaranteed.



Call me today!

TARA WALKER SMITH, REALTOR®
Tara@TomSmithHomes.com
601.990.5070 office | 601.407.4315 cell



Expect More. Get More.

TomSmithLandandHomes.com

Information is believed to be accurate but not guaranteed.



Call me today!

TARA WALKER SMITH, REALTOR®
Tara@TomSmithHomes.com
601.990.5070 **office** | 601.407.4315 **cell**

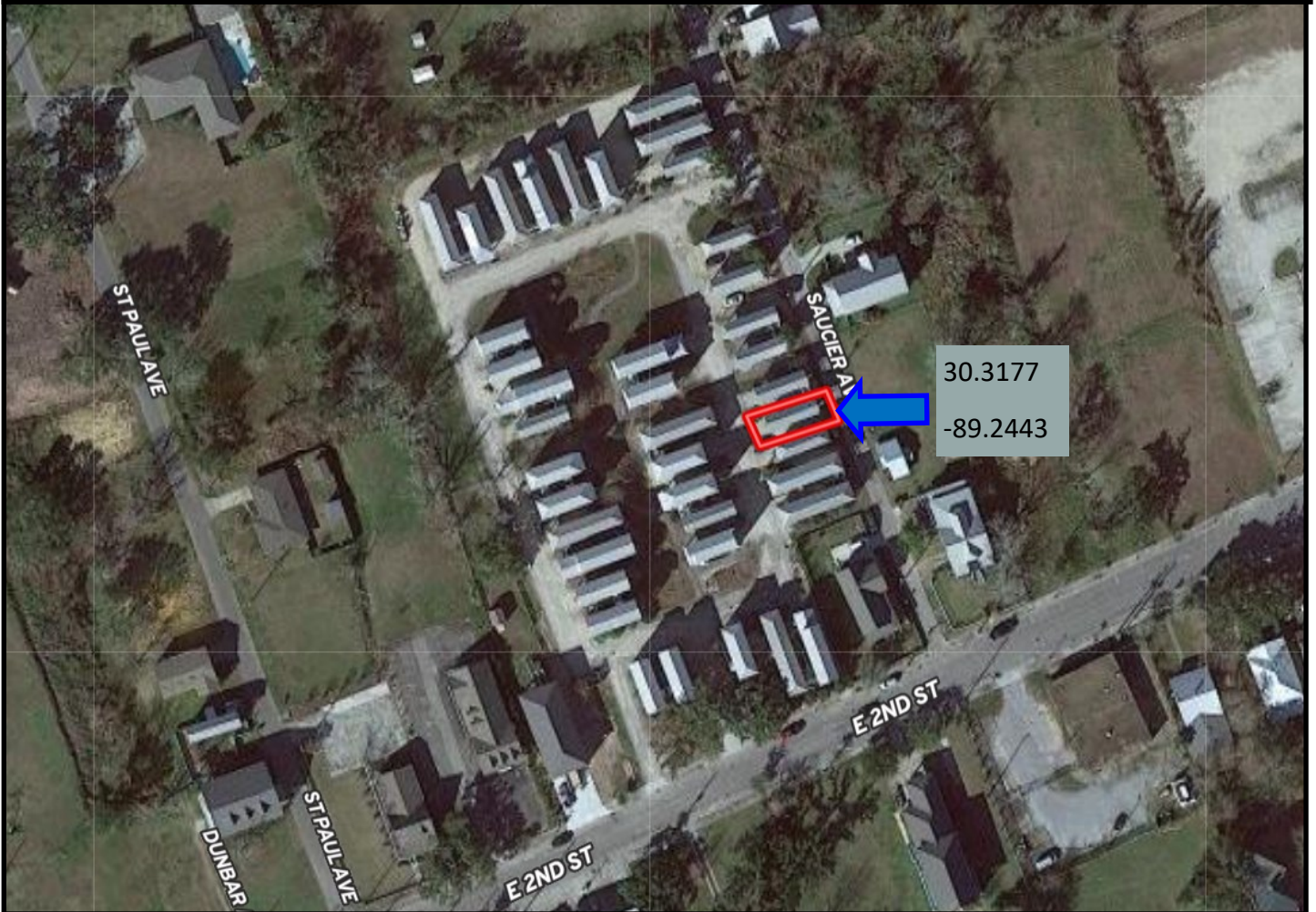


Expect More. Get More.

TomSmithLandandHomes.com

Information is believed to be accurate but not guaranteed.

Aerial Map



[Click for Interactive Map](#)



Call me today!

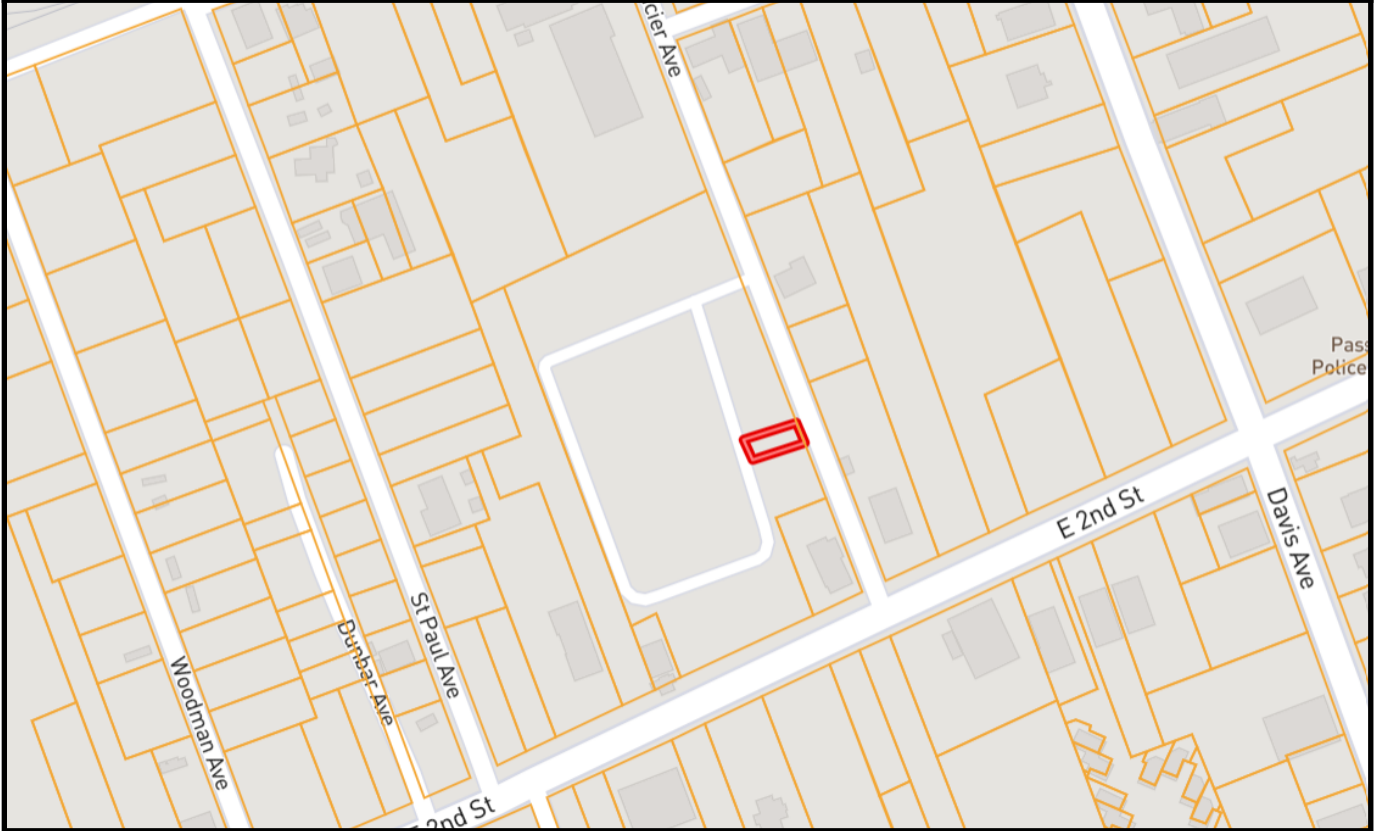
TARA WALKER SMITH, REALTOR®
Tara@TomSmithHomes.com
601.990.5070 office | 601.407.4315 cell



TomSmithLandandHomes.com

Information is believed to be accurate but not guaranteed.

Ownership Map



Call me today!

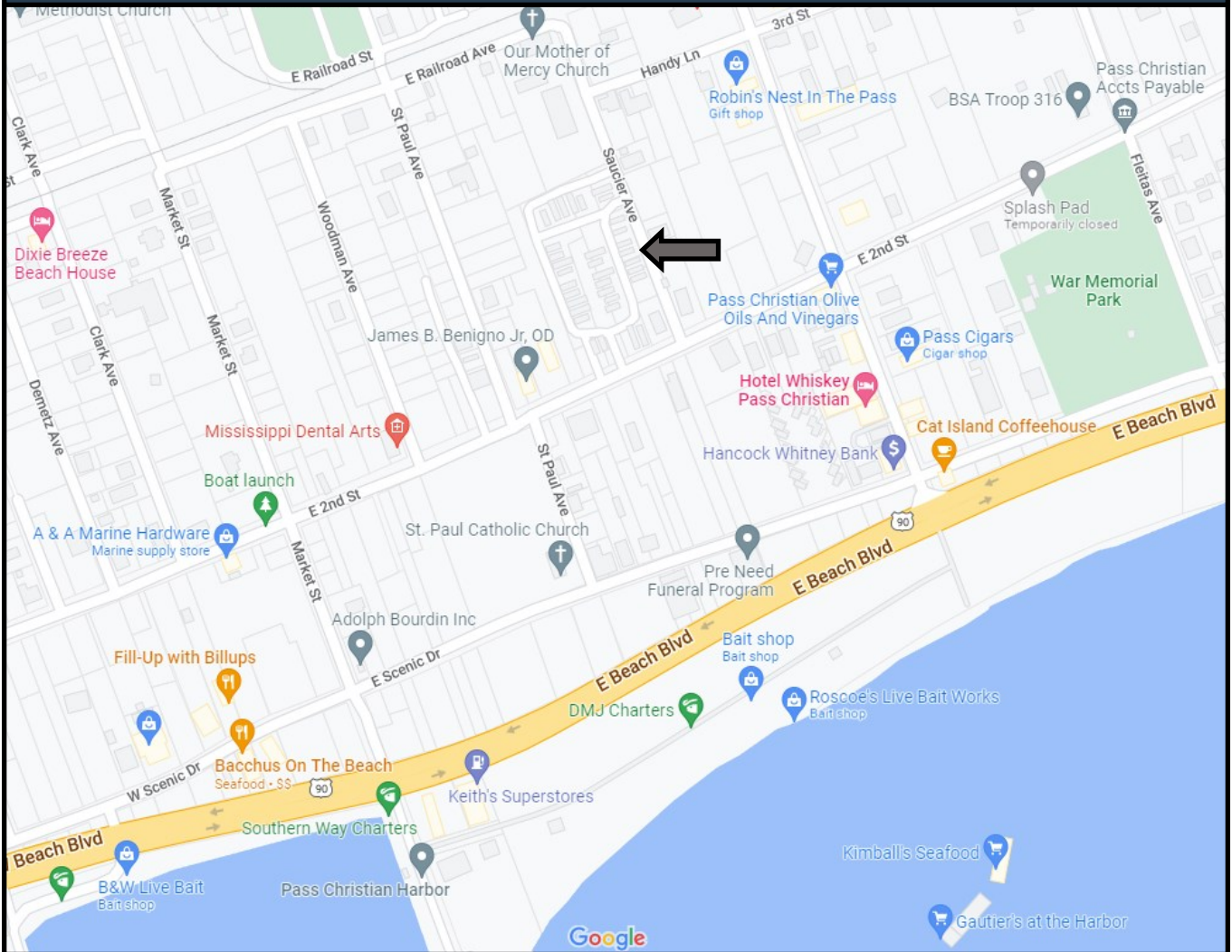
TARA WALKER SMITH, REALTOR®
Tara@TomSmithHomes.com
601.990.5070 office | 601.407.4315 cell



TomSmithLandandHomes.com

Information is believed to be accurate but not guaranteed.

Directional Map



Directions from the intersection of E Beach Blvd and Davis Ave in Pass Christian, MS:
Turn right onto Davis Ave and travel 0.1 miles. Turn left onto E 2nd Street and travel 472 feet. Turn right onto Saucier Ave. After 243 feet, the home will be on the left.

[Click for Google Map](#)



Call me today!

TARA WALKER SMITH, REALTOR®
Tara@TomSmithHomes.com
601.990.5070 office | 601.407.4315 cell



Expect More. Get More.

TomSmithLandandHomes.com

Information is believed to be accurate but not guaranteed.