

10+ /- Acre Recreational Tract Franklin County, MS



\$79,000

Take a look at this rare opportunity to own property in Franklin County, MS. This property joins the Homochitto National Forest, south of Lake Okhissa, on Coldwater Church Road in Meadville. This area is very desirable for hunters who are looking for the ability to hunt the national forest. The property is covered in young pines, the perfect bedding ground for whitetail deer. The property offers the ideal terrain to put a camp or a cabin! Utilities are available at the road. Call Eli today to schedule a viewing!

Directions from the Intersection of MS-184 and US-98 in Bude, MS: Travel east on Hwy 98 for 6.1 miles. Turn left on Hancock Road. travel .3 miles and turn left on Coldwater Church Road. Travel .5 miles and the destination is on your left.



Call me today!

ELI FERGUSON, REALTOR®
Eli@TomSmithLand.com
601.990.5070 **office** | 601.757.7117 **cell**



TomSmithLandandHomes.com

Information is believed to be accurate but not guaranteed.



Call me today!

ELI FERGUSON, REALTOR®
Eli@TomSmithLand.com
601.990.5070 **office** | 601.757.7117 **cell**



TomSmithLandandHomes.com

Information is believed to be accurate but not guaranteed.



Aerial Map

[Click for Interactive Map](#)



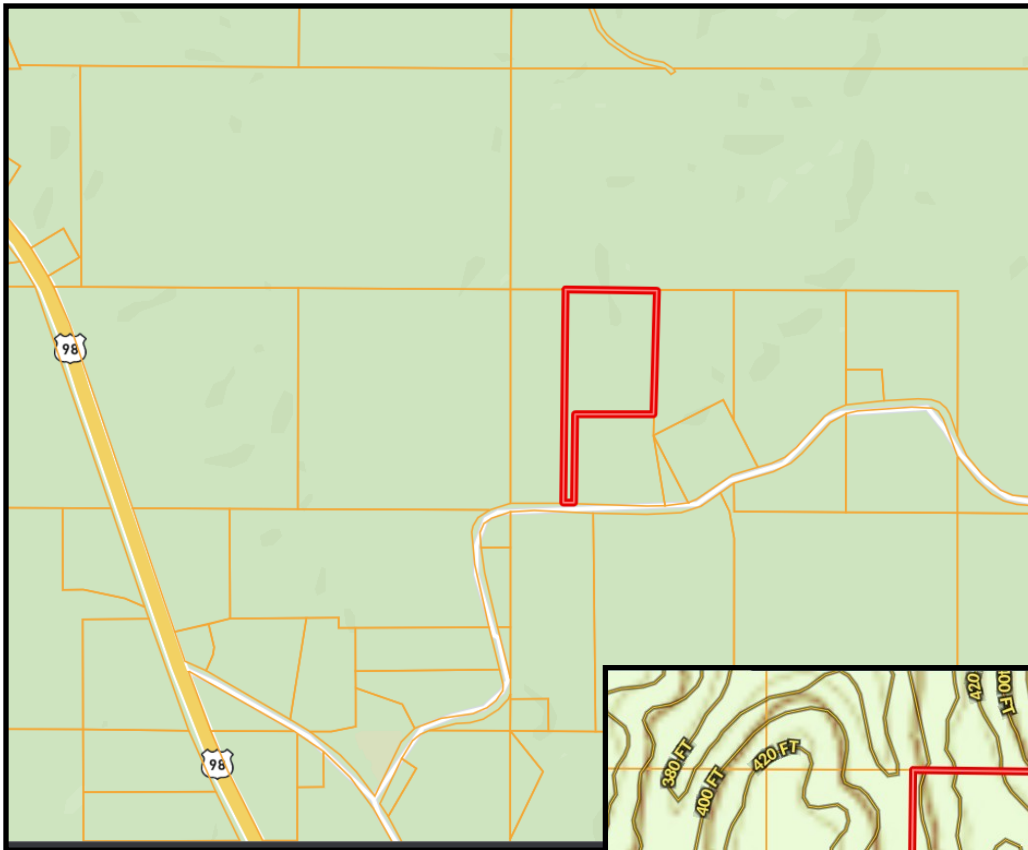
Call me today!

ELI FERGUSON, REALTOR®
Eli@TomSmithLand.com
601.990.5070 **office** | 601.757.7117 **cell**

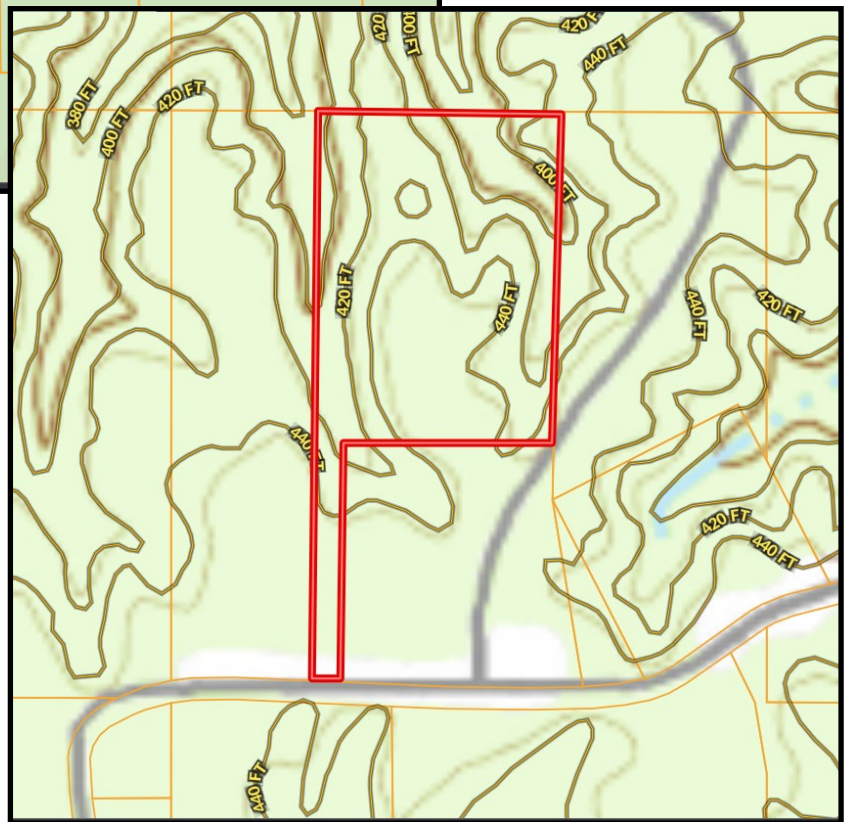


TomSmithLandandHomes.com

Information is believed to be accurate but not guaranteed.



Ownership
Map



Topo
Map



Call me today!

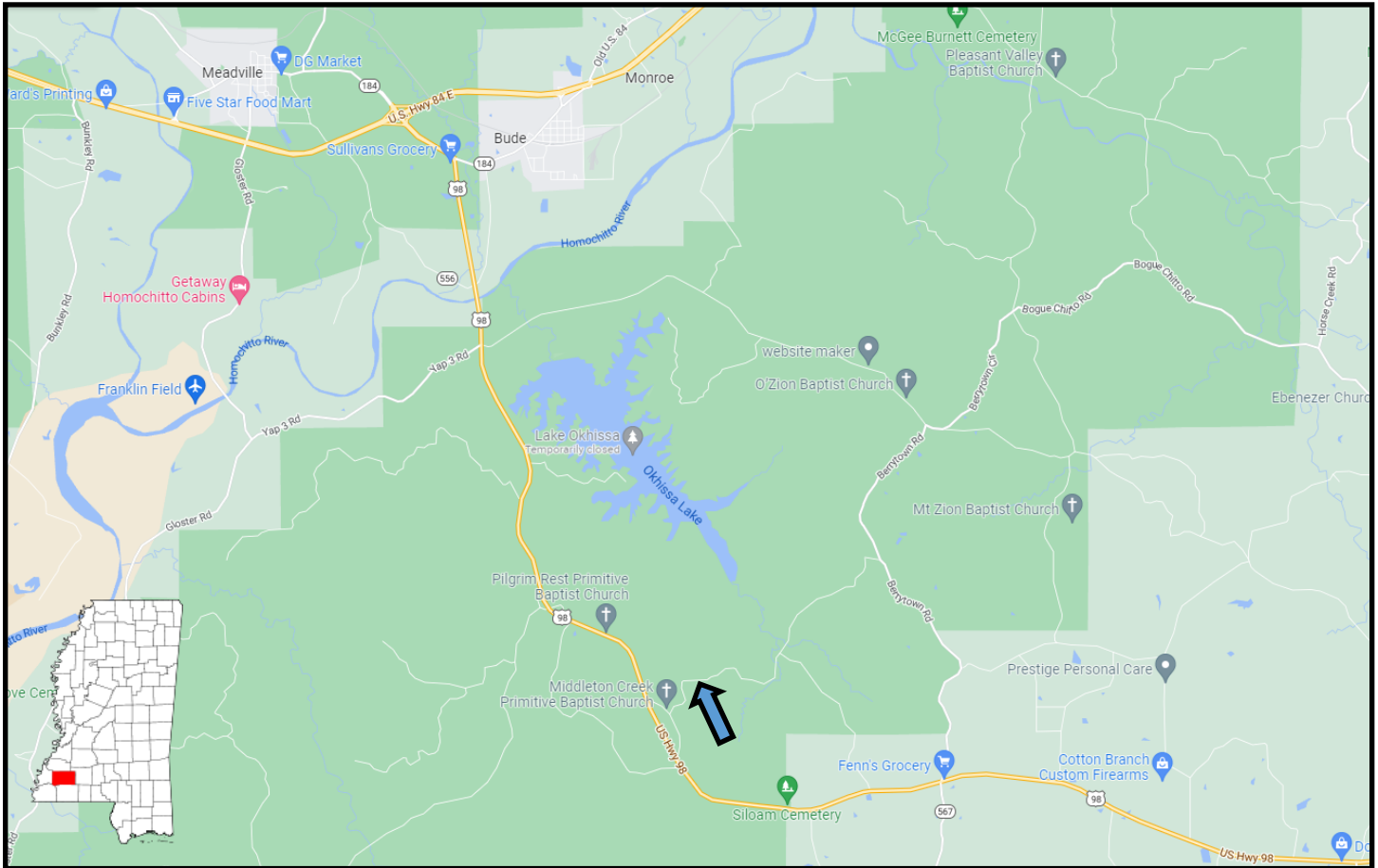
ELI FERGUSON, REALTOR®
Eli@TomSmithLand.com
601.990.5070 office | 601.757.7117 cell



TomSmithLandandHomes.com

Information is believed to be accurate but not guaranteed.

Directional Map



Directions from the Intersection of MS-184 and US-98 in Bude, MS: Travel east on Hwy 98 for 6.1 miles. Turn left on Hancock Road. travel .3 miles and turn left on Coldwater Church Road. Travel .5 miles and the destination is on your left.

[Click for Google Map](#)



Call me today!

ELI FERGUSON, REALTOR®
Eli@TomSmithLand.com
601.990.5070 **office** | 601.757.7117 **cell**



Expect More. Get More.

TomSmithLandandHomes.com

Information is believed to be accurate but not guaranteed.