

49.5± Acres of Excellent Hunting in Franklin County, MS



\$149,000



Check out this excellent 49.5± acres hunting property in Franklin County, MS! Located right outside the small town of Meadville, MS. This property offers plenty of seclusions while only being about 20 minutes from the amenities of Brookhaven, MS. This property could be made for an excellent hunting tract while also being located less than three miles from public hunting at the Homochitto National Forest! The property is separated by Bonus Rd, giving you two non-contiguous plots.

Directions from US-84W in Meadville, MS: Travel West on US-84. Turn right onto MS-184W. In 1.0 miles, turn right onto Union Church Rd. Travel .7 miles and continue onto Hospital Rd. Travel 7.0 miles and turn left onto Bill Arnold Rd. Travel 2.5 miles and turn left onto Bonus Rd. The property will be on both sides of the road.



Call me today!

PRESTON SMITH, MANAGING BROKER
Preston@TomSmithLand.com
601.990.5070 **office** | 601.209.7150 **cell**



TomSmithLandandHomes.com

Information is believed to be accurate but not guaranteed.



Call me today!

PRESTON SMITH, MANAGING BROKER
Preston@TomSmithLand.com
601.990.5070 office | 601.209.7150 cell



Expect More. Get More.

TomSmithLandandHomes.com

Information is believed to be accurate but not guaranteed.



Call me today!

PRESTON SMITH, MANAGING BROKER
Preston@TomSmithLand.com
601.990.5070 office | 601.209.7150 cell



TomSmithLandandHomes.com

Information is believed to be accurate but not guaranteed.



49.5± Acres

ARNOLD RD

Bonus

BONUS RD

31.5856

-90.8957

BILL ARNOLD RD

[Interactive Map Link](#)

Aerial Map

Call me today!

PRESTON SMITH, MANAGING BROKER
Preston@TomSmithLand.com
601.990.5070 **office** | 601.209.7150 **cell**

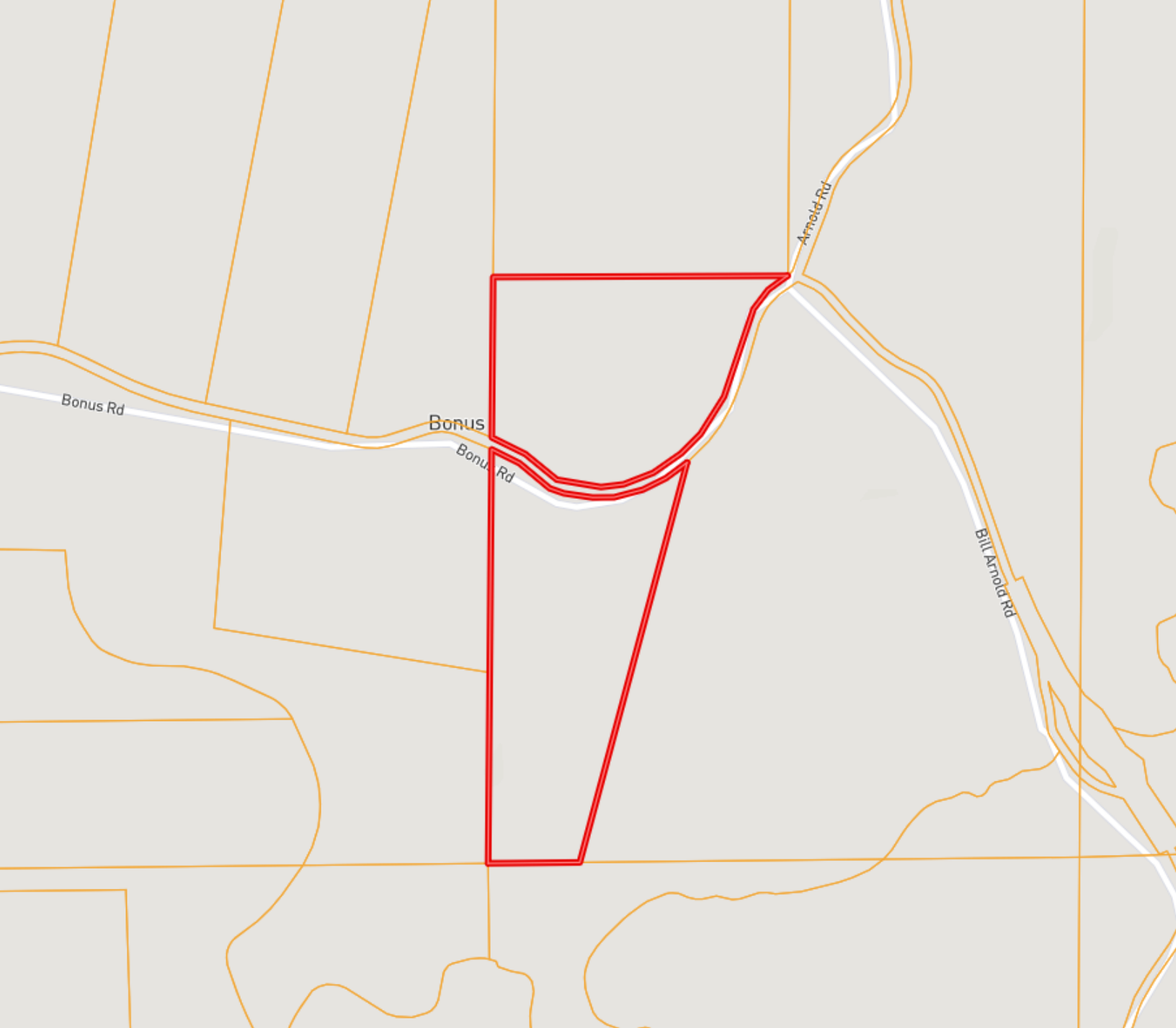


Expect More. Get More.



TomSmithLandandHomes.com

Information is believed to be accurate but not guaranteed.



Ownership Map

Call me today!

PRESTON SMITH, MANAGING BROKER
Preston@TomSmithLand.com
601.990.5070 **office** | 601.209.7150 **cell**

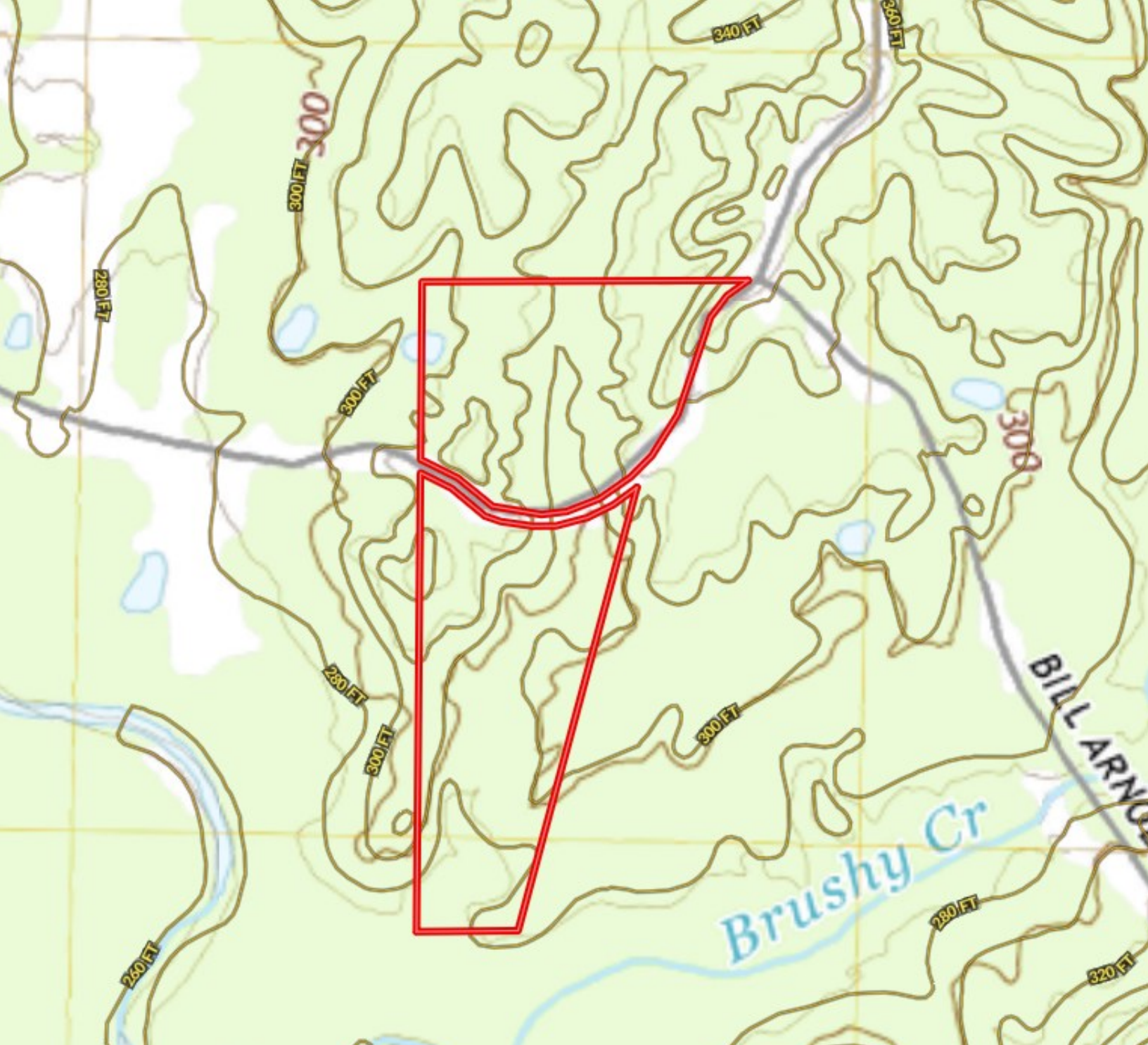


Expect More. Get More.



TomSmithLandandHomes.com

Information is believed to be accurate but not guaranteed.



Topography Map

Call me today!

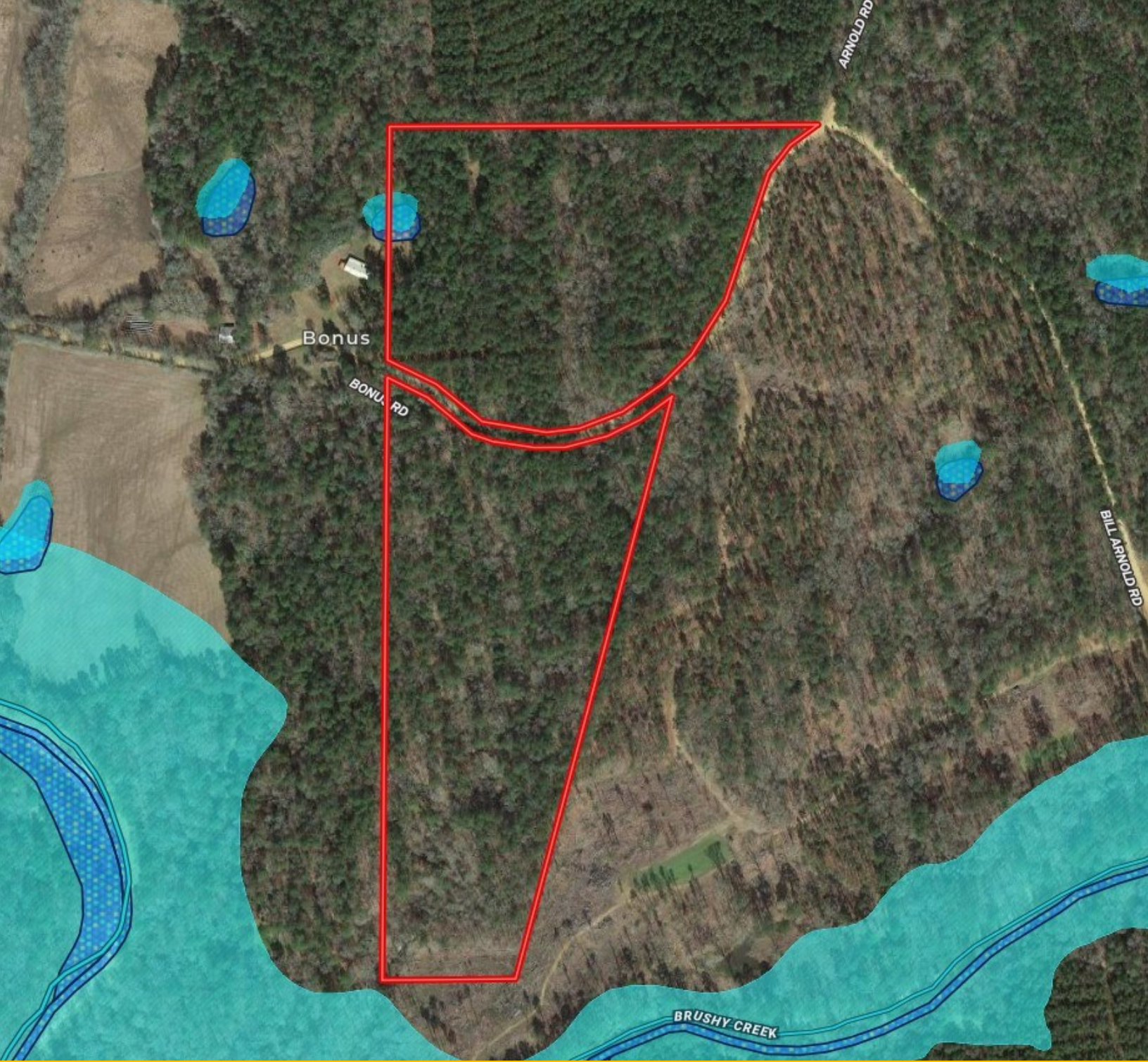
PRESTON SMITH, MANAGING BROKER
Preston@TomSmithLand.com
601.990.5070 **office** | 601.209.7150 **cell**



Expect More. Get More.

TomSmithLandandHomes.com

Information is believed to be accurate but not guaranteed.



Flood Map

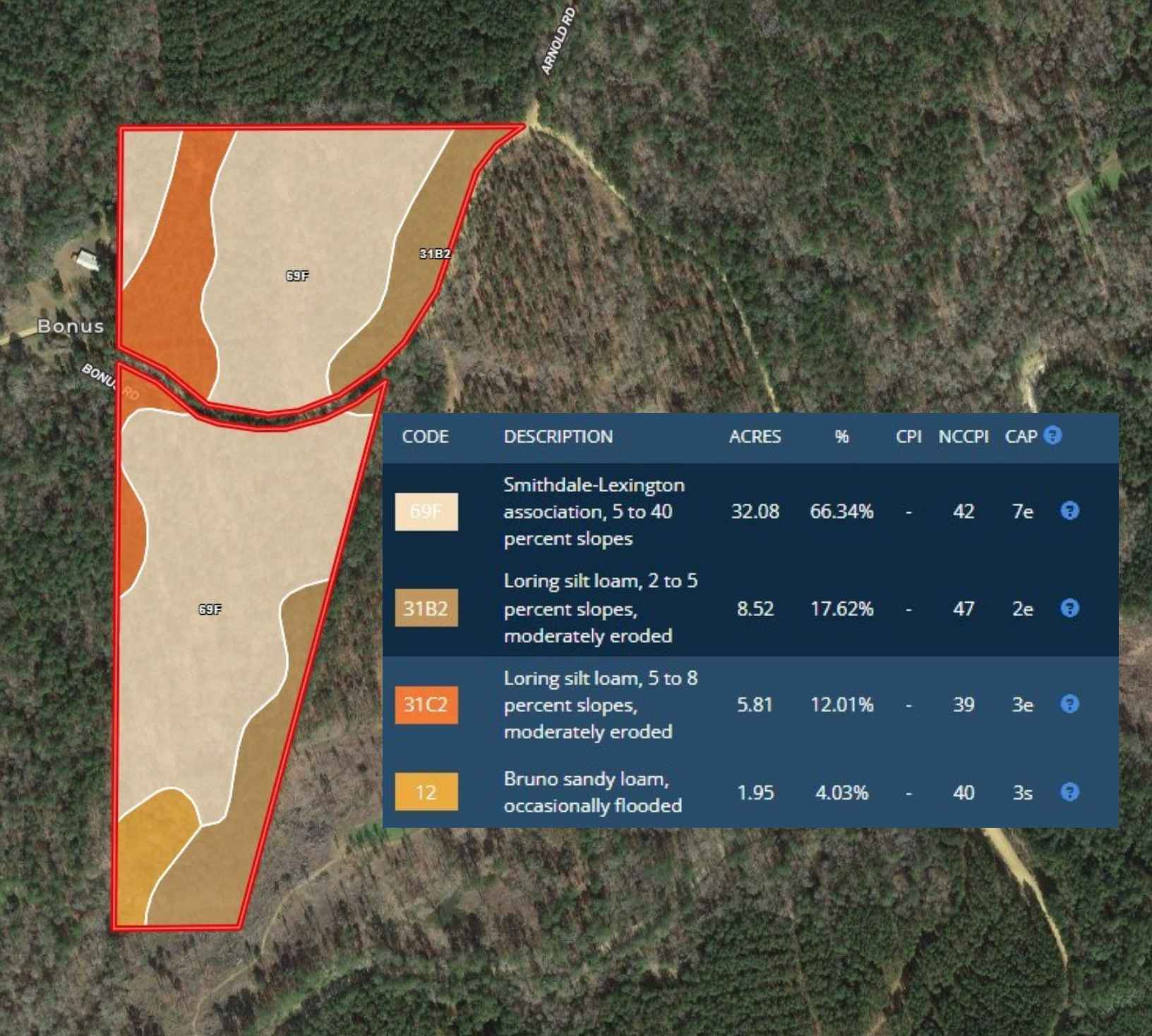
Call me today!

PRESTON SMITH, MANAGING BROKER
Preston@TomSmithLand.com
601.990.5070 **office** | 601.209.7150 **cell**



TomSmithLandandHomes.com

Information is believed to be accurate but not guaranteed.



Soil Map

Call me today!

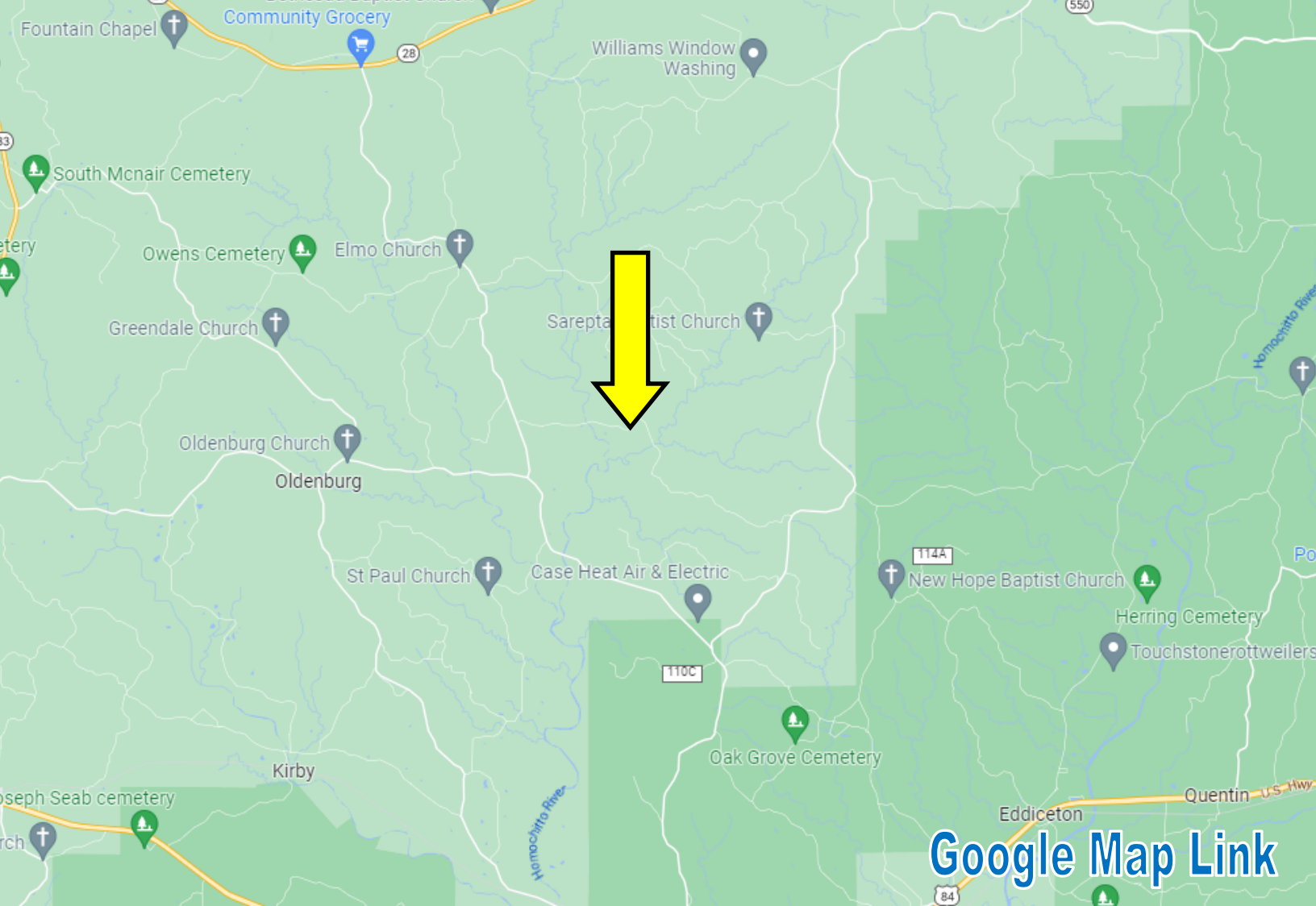
PRESTON SMITH, MANAGING BROKER
 Preston@TomSmithLand.com
 601.990.5070 office | 601.209.7150 cell



Expect More. Get More.

TomSmithLandandHomes.com

Information is believed to be accurate but not guaranteed.



Directional Map

Directions from US-84W in Meadville, MS: Travel West on US-84. Turn right onto MS-184W. In 1.0 miles, turn right onto Union Church Rd. Travel .7 miles and continue onto Hospital Rd. Travel 7.0 miles and turn left onto Bill Arnold Rd. Travel 2.5 miles and turn left onto Bonus Rd. The property will be on both sides of the road.

Call me today!

PRESTON SMITH, MANAGING BROKER
Preston@TomSmithLand.com
601.990.5070 **office** | 601.209.7150 **cell**



Expect More. Get More.

TomSmithLandandHomes.com

Information is believed to be accurate but not guaranteed.