

Recreational/Hunting Tract 127.94+/- Surveyed Acres in Oktibbeha

\$409,895

Here is a great hunting and recreational tract located just minutes from Sturgis, MS. This 127.94 +/- acre tract in Oktibbeha County, MS has so much potential. This property has approximately 1400 feet of road frontage on Sturgis West Point Road and a power line that runs through the middle of the property. This property consist of 20-year-old natural regeneration of pines and hardwoods. There are hardwood wood draws and ridges through out the property. Deer and Turkey sign was abundant throughout the property the day I walked it. There are also many home sites and utilities located near by! To schedule, a private showing, call or text Walker!

Directions from Dollar General: From Dollar General in Sturgis MS head North on Sturgis West Point Road towards Earles Fork Road. The property will be on your left in 2.2 miles.



Call me today!

WALKER TRANUM, REALTOR®
Walker@TomSmithHomes.com
662.268.6333 **office** | 662.769.1442 **cell**



TomSmithLandandHomes.com

Information is believed to be accurate but not guaranteed.



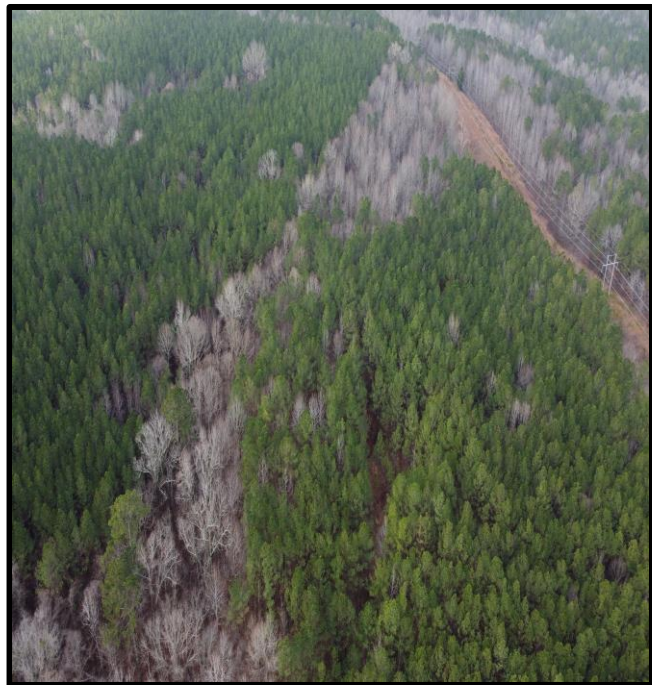
Call me today!

WALKER TRANUM, REALTOR®
Walker@TomSmithHomes.com
662.268.6333 **office** | 662.769.1442 **cell**



TomSmithLandandHomes.com

Information is believed to be accurate but not guaranteed.



Call me today!

WALKER TRANUM, REALTOR®
 Walker@TomSmithHomes.com
 662.268.6333 **office** | 662.769.1442 **cell**



TomSmithLandandHomes.com

Information is believed to be accurate but not guaranteed.



Call me today!

WALKER TRANUM, REALTOR®
Walker@TomSmithHomes.com
662.268.6333 **office** | 662.769.1442 **cell**



TomSmithLandandHomes.com

Information is believed to be accurate but not guaranteed.



Call me today!

WALKER TRANUM, REALTOR®
Walker@TomSmithHomes.com
662.268.6333 **office** | 662.769.1442 **cell**



TomSmithLandandHomes.com

Information is believed to be accurate but not guaranteed.



Call me today!

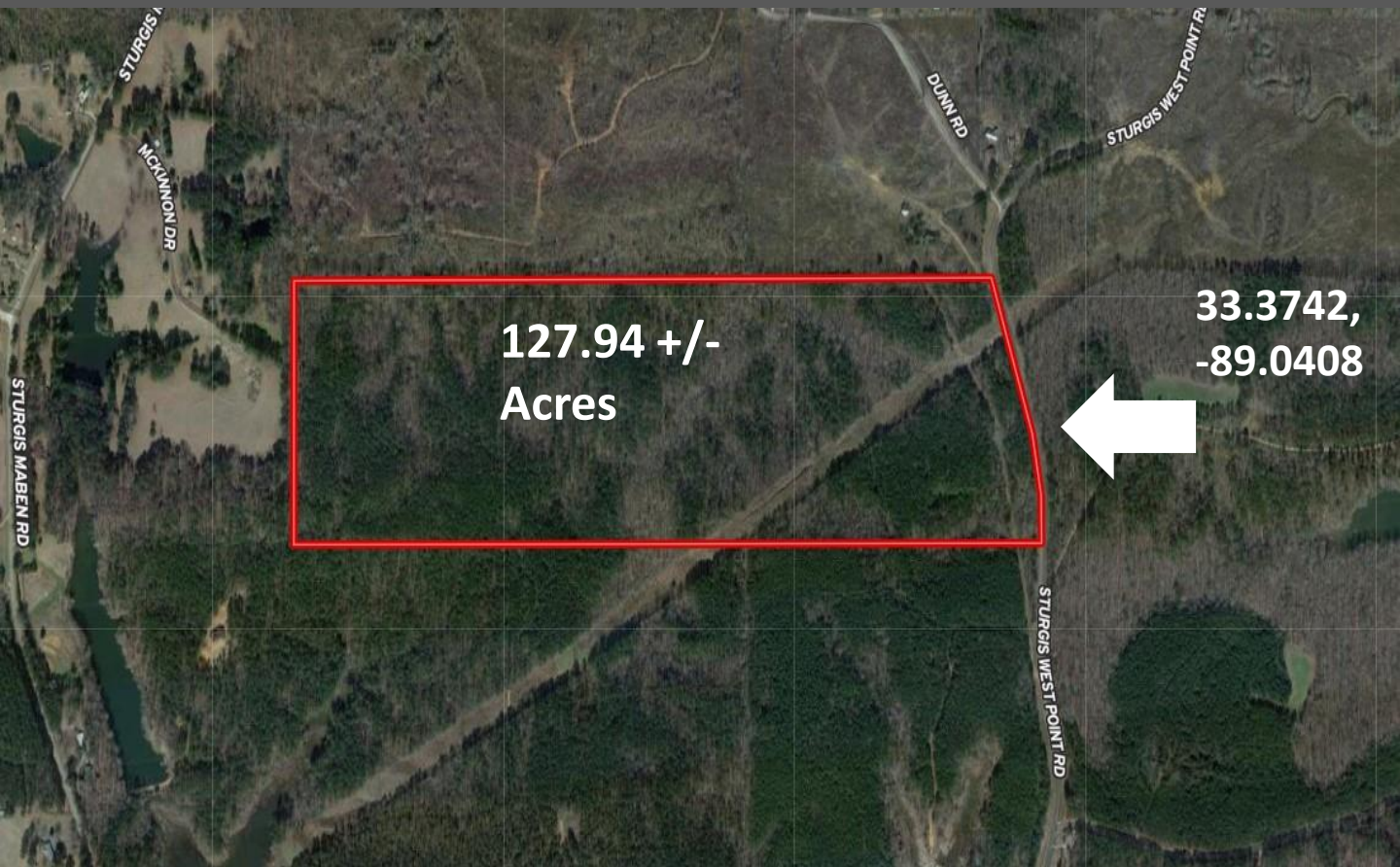
WALKER TRANUM, REALTOR®
 Walker@TomSmithHomes.com
 662.268.6333 **office** | 662.769.1442 **cell**



TomSmithLandandHomes.com

Information is believed to be accurate but not guaranteed.

Aerial Map



Click [Here](#) for Interactive Link



Call me today!

WALKER TRANUM, REALTOR®
Walker@TomSmithHomes.com
662.268.6333 **office** | 662.769.1442 **cell**



TomSmithLandandHomes.com

Information is believed to be accurate but not guaranteed.

Flood Map



Call me today!

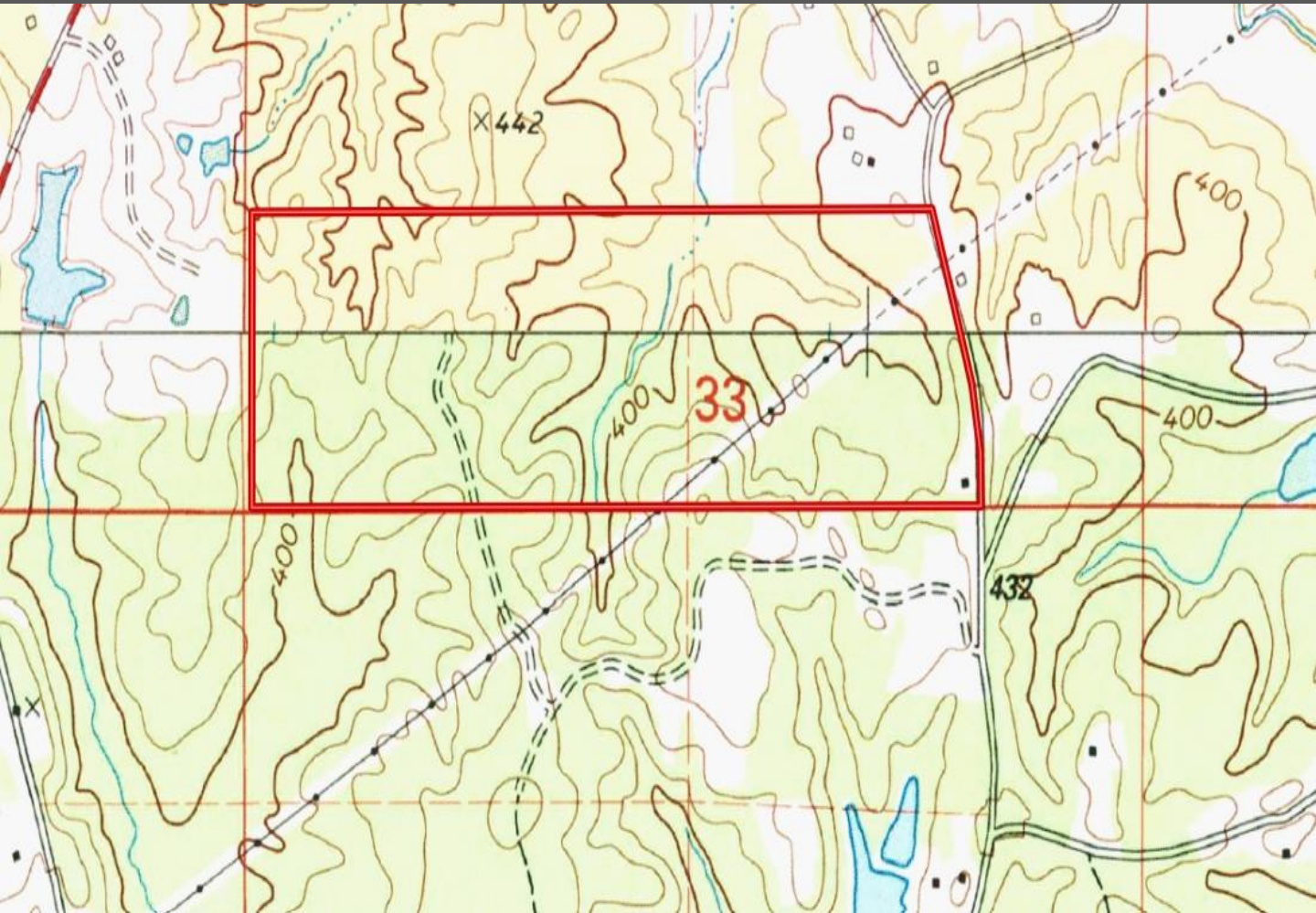
WALKER TRANUM, REALTOR®
Walker@TomSmithHomes.com
662.268.6333 office | 662.769.1442 cell



TomSmithLandandHomes.com

Information is believed to be accurate but not guaranteed.

Topography Map



Call me today!

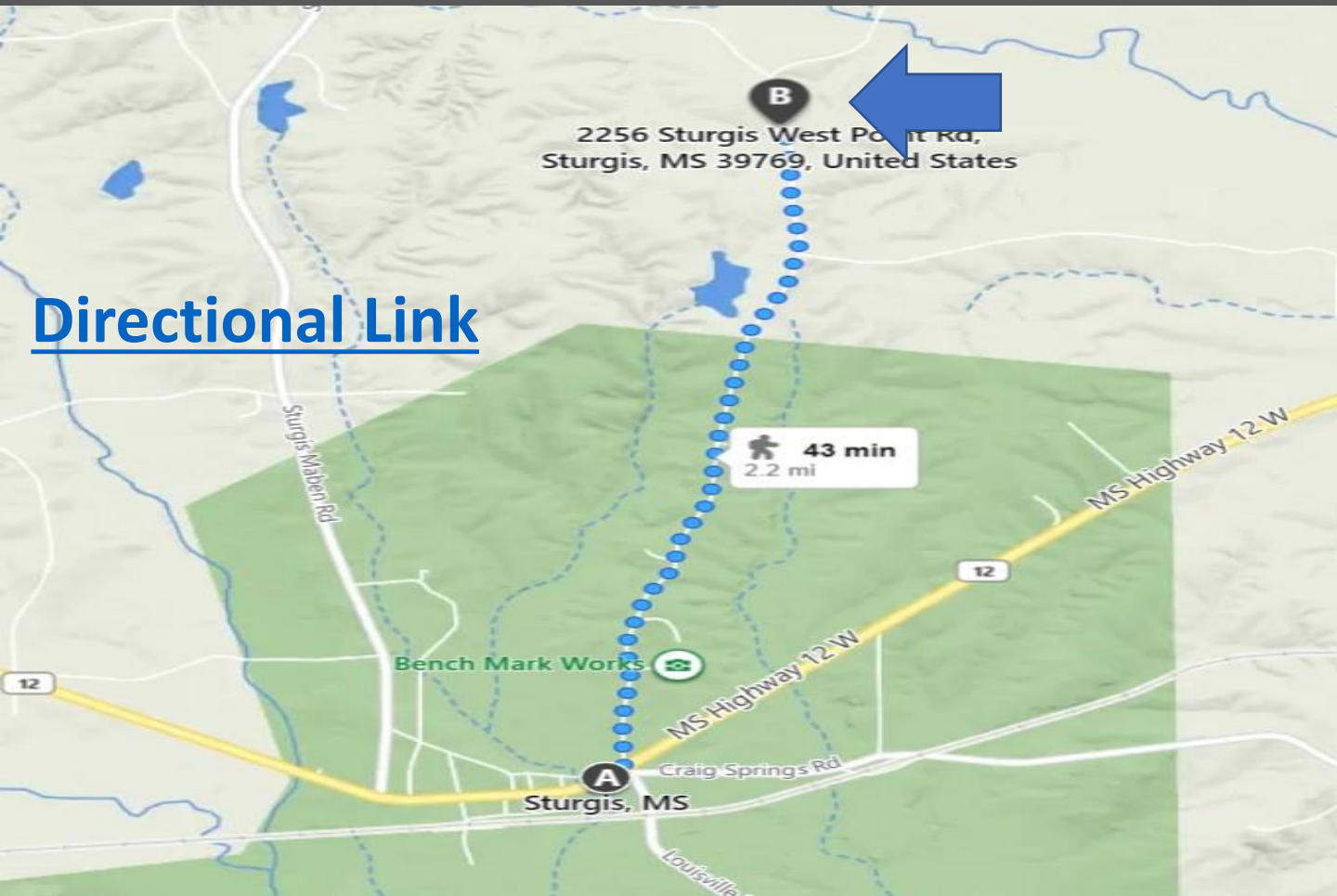
WALKER TRANUM, REALTOR®
Walker@TomSmithHomes.com
662.268.6333 **office** | 662.769.1442 **cell**



TomSmithLandandHomes.com

Information is believed to be accurate but not guaranteed.

Directional Map



[Directional Link](#)

Directions from Dollar General: From Dollar General in Sturgis MS head North on Sturgis West Point Road towards Earles Fork Road. The property will be on your left in 2.2 miles.



Call me today!

WALKER TRANUM, REALTOR®
Walker@TomSmithHomes.com
662.268.6333 office | 662.769.1442 cell



TomSmithLandandHomes.com

Information is believed to be accurate but not guaranteed.