

# Home on 22+/- Acres Carroll County, MS



**1334 County Road 119  
Carrollton, MS 38917**



**\$165,500**

Take a look at this 2,500+/- sq ft home with 22+/- acres in Carroll County, MS. This home features three bedrooms, two bathrooms, a carport, and a gravel drive. The house is located on a corner lot, with road frontage on CR 119 and CR 118 in Carrollton. The front porch is perfect for sitting outside and enjoying the peaceful countryside while overlooking the yard and wooded acreage. There is also a barn and storage building. Call Danny today to schedule a viewing!

Directions from 1-55 N in Carrollton, MS: Take exit 174 toward MS-35 N/MS-430 W and keep left to follow MS-35 N. Travel 13.5 miles and turn left onto US-82 W. Travel 1.6 miles and turn right onto MS-17 N/MS-35 N. Travel 1.4 miles and turn right onto Front Street. Travel 0.2 miles and turn left onto Jefferson Street. Travel 0.3 miles and continue on Grenada Road. Travel 2.9 miles and turn left on County Road 100. Travel 2.9 miles and turn left onto Bethel Road. After 1.2 miles, the home will be on your right. Address: 1334 County Road 119 Carrollton, MS 38917

[Click for Google Map](#)



*Call me today!*

**DANNY WILLOUGHBY, REALTOR®**  
Danny@TomSmithLand.com  
601.898.2772 **office** | 601.720.9995 **cell**



**TomSmithLandandHomes.com**

Information is believed to be accurate but not guaranteed.





*Call me today!*

**DANNY WILLOUGHBY, REALTOR®**  
 Danny@TomSmithLand.com  
 601.898.2772 office | 601.720.9995 cell



Expect More. Get More.

**TomSmithLandandHomes.com**

Information is believed to be accurate but not guaranteed.



# Aerial Map



[Click for Interactive Map](#)



*Call me today!*

**DANNY WILLOUGHBY**, REALTOR®  
Danny@TomSmithLand.com  
601.898.2772 **office** | 601.720.9995 **cell**

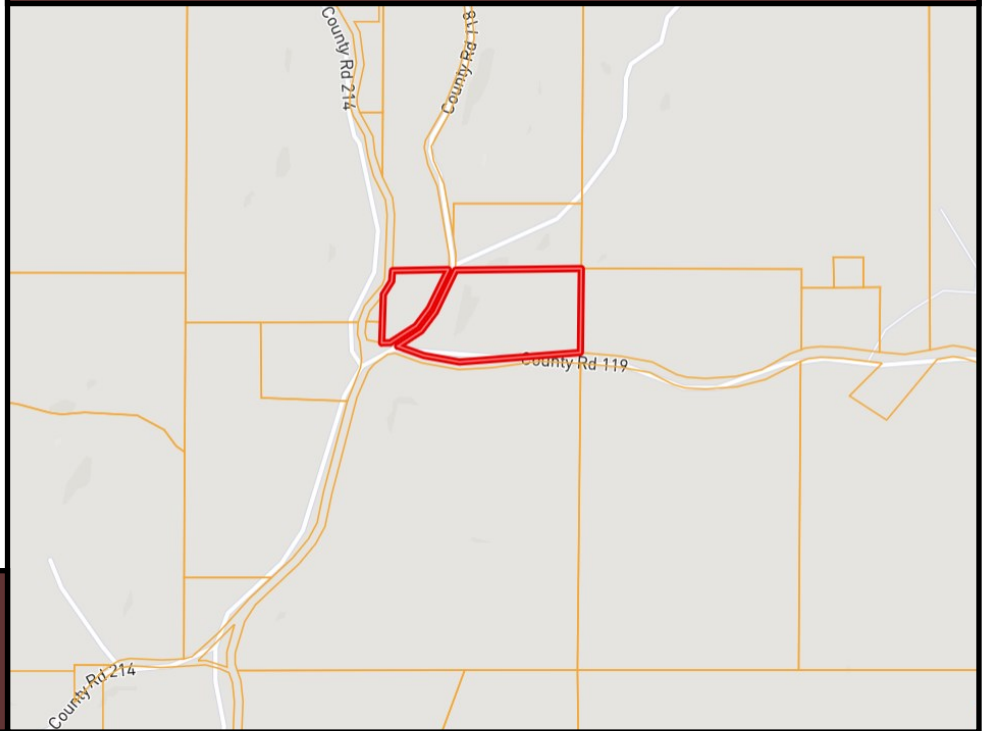


Expect More. Get More.

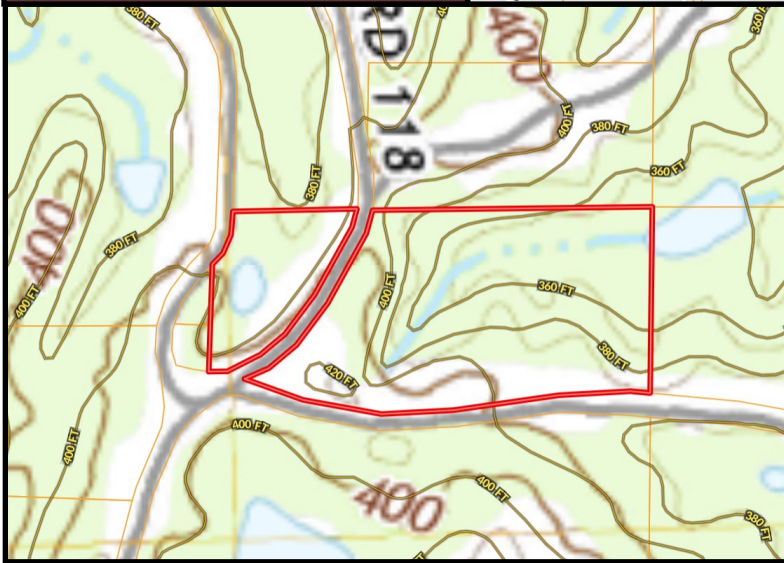
**TomSmithLandandHomes.com**

Information is believed to be accurate but not guaranteed.

# Ownership Map



# Topo Map



*Call me today!*

**DANNY WILLOUGHBY, REALTOR®**  
Danny@TomSmithLand.com  
601.898.2772 office | 601.720.9995 cell

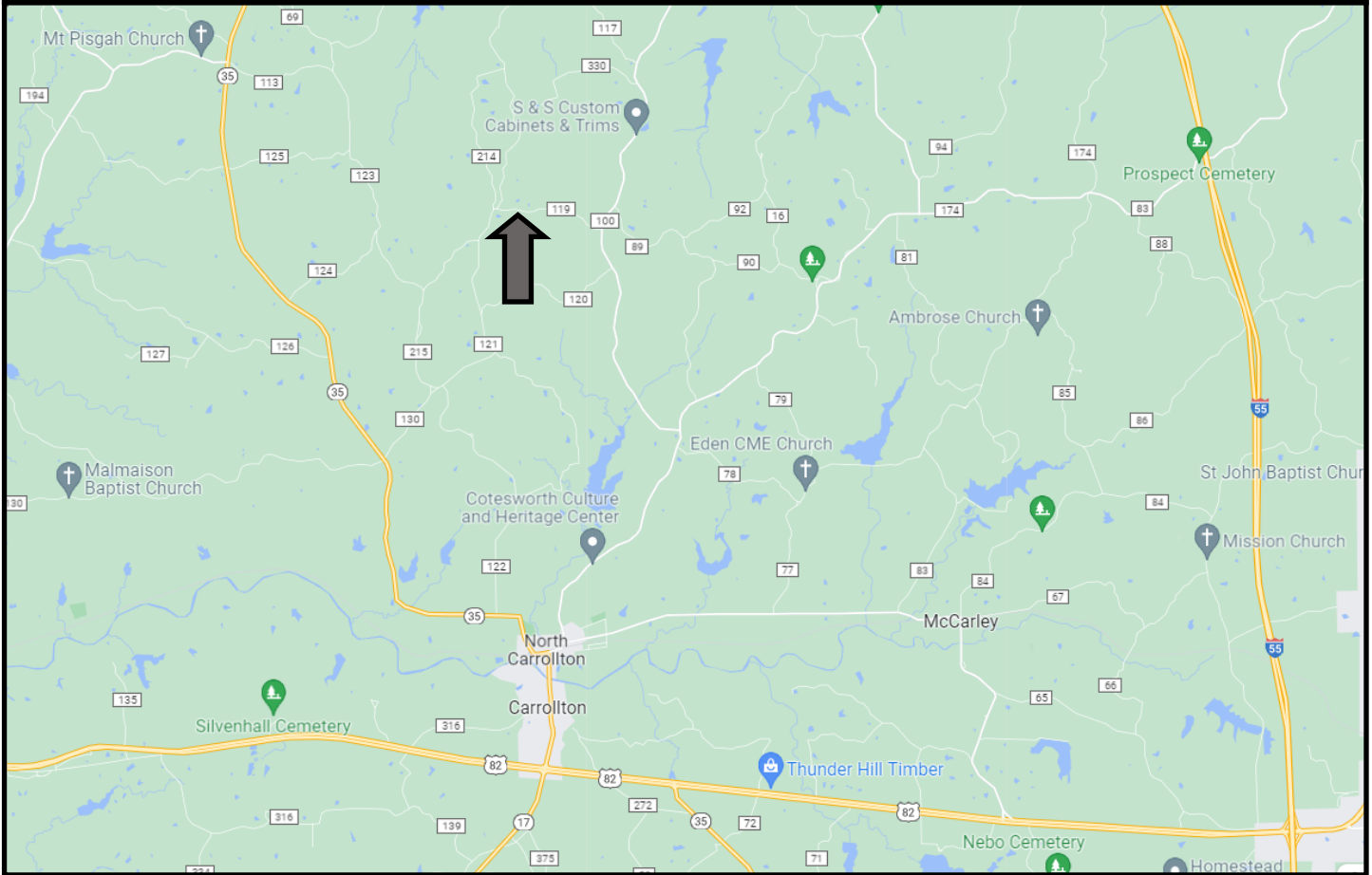


**TomSmithLandandHomes.com**

Information is believed to be accurate but not guaranteed.



# Directional Map



Directions from I-55 N in Carrollton, MS: Take exit 174 toward MS-35 N/MS-430 W and keep left to follow MS-35 N. Travel 13.5 miles and turn left onto US-82 W. Travel 1.6 miles and turn right onto MS-17 N/MS-35 N. Travel 1.4 miles and turn right onto Front Street. Travel 0.2 miles and turn left onto Jefferson Street. Travel 0.3 miles and continue on Grenada Road. Travel 2.9 miles and turn left on County Road 100. Travel 2.9 miles and turn left onto Bethel Road. After 1.2 miles, the home will be on your right. Address: 1334 County Road 119 Carrollton, MS 38917

[Click for Google Map](#)

*Call me today!*

**DANNY WILLOUGHBY, REALTOR®**  
Danny@TomSmithLand.com  
601.898.2772 **office** | 601.720.9995 **cell**



## TomSmithLandandHomes.com

Information is believed to be accurate but not guaranteed.