

97.6 Acre Recreation/Timber Tract Tallahatchie County, MS



\$3,066 Per Acre

97.6 +/- acre property located approximately 25 minutes Northwest of Grenada, MS., in the Casilla community of Tallahatchie County. The property is approximately 32 acre of excellent hay ground, approximately 20 acre of Pine Plantation and approximately 44 acre of mixed pine and hardwood timber. There is a +/- 1.5-acre pond and utilities are in place for you own camp house or permanent residence. There are 2 gated entrances off West Kendall Drive. Lots of Deer and Turkey sign were found on initial property visit. Survey available upon request. Call Doyes for your personal tour.

Directions from Hwy 51 and Hwy 7 intersection in Grenada, MS: Travel North on MS 51 for approximately 2.8 miles, turn left (West) on Casilla road 7.4 miles to West Kendal drive, then Southwest for approximately ½ mile, tract will be on left



Call me today!

DOYES HOLLAND, REALTOR®
DHolland@TomSmithLand.com
662.268.6333 office | 662.312.2165 cell



TomSmithLandandHomes.com

Information is believed to be accurate but not guaranteed.



LandReport
2011-2022
AMERICA'S
BEST
BROKERAGES

Call me today!

DOYES HOLLAND, REALTOR®
DHolland@TomSmithLand.com
662.268.6333 office | 662.312.2165 cell



TomSmithLandandHomes.com

Information is believed to be accurate but not guaranteed.



LandReport
2011-2022
AMERICA'S
BEST
BROKERAGES

Call me today!

DOYES HOLLAND, REALTOR®
DHolland@TomSmithLand.com
662.268.6333 office | 662.312.2165 cell



Expect More. Get More.

TomSmithLandandHomes.com

Information is believed to be accurate but not guaranteed.



Call me today!

DOYES HOLLAND, REALTOR®
DHolland@TomSmithLand.com
662.268.6333 office | 662.312.2165 cell



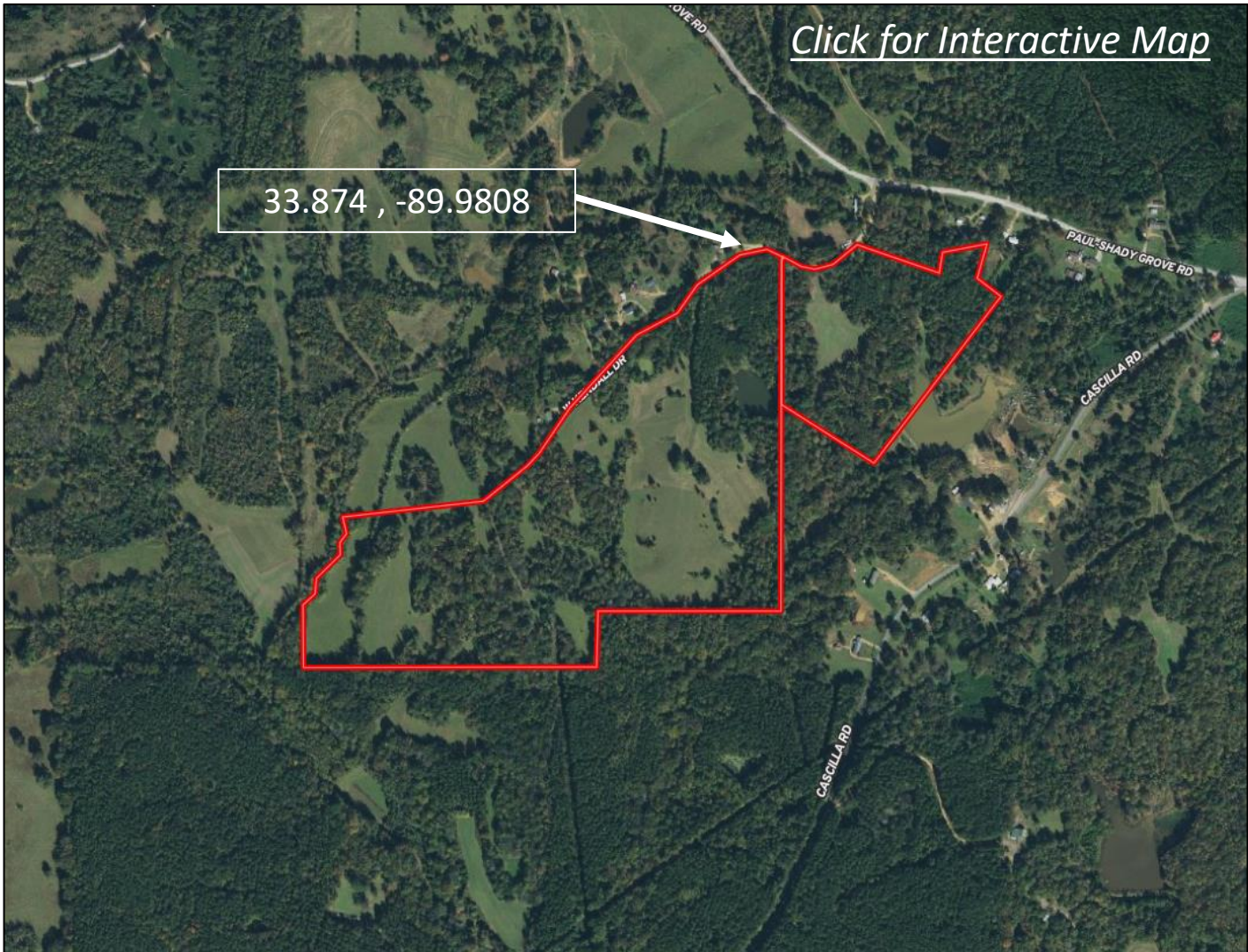
TomSmithLandandHomes.com

Information is believed to be accurate but not guaranteed.

Aerial Map

[Click for Interactive Map](#)

33.874 , -89.9808



LandReport
2011-2022
AMERICA'S
BEST
BROKERAGES

Call me today!

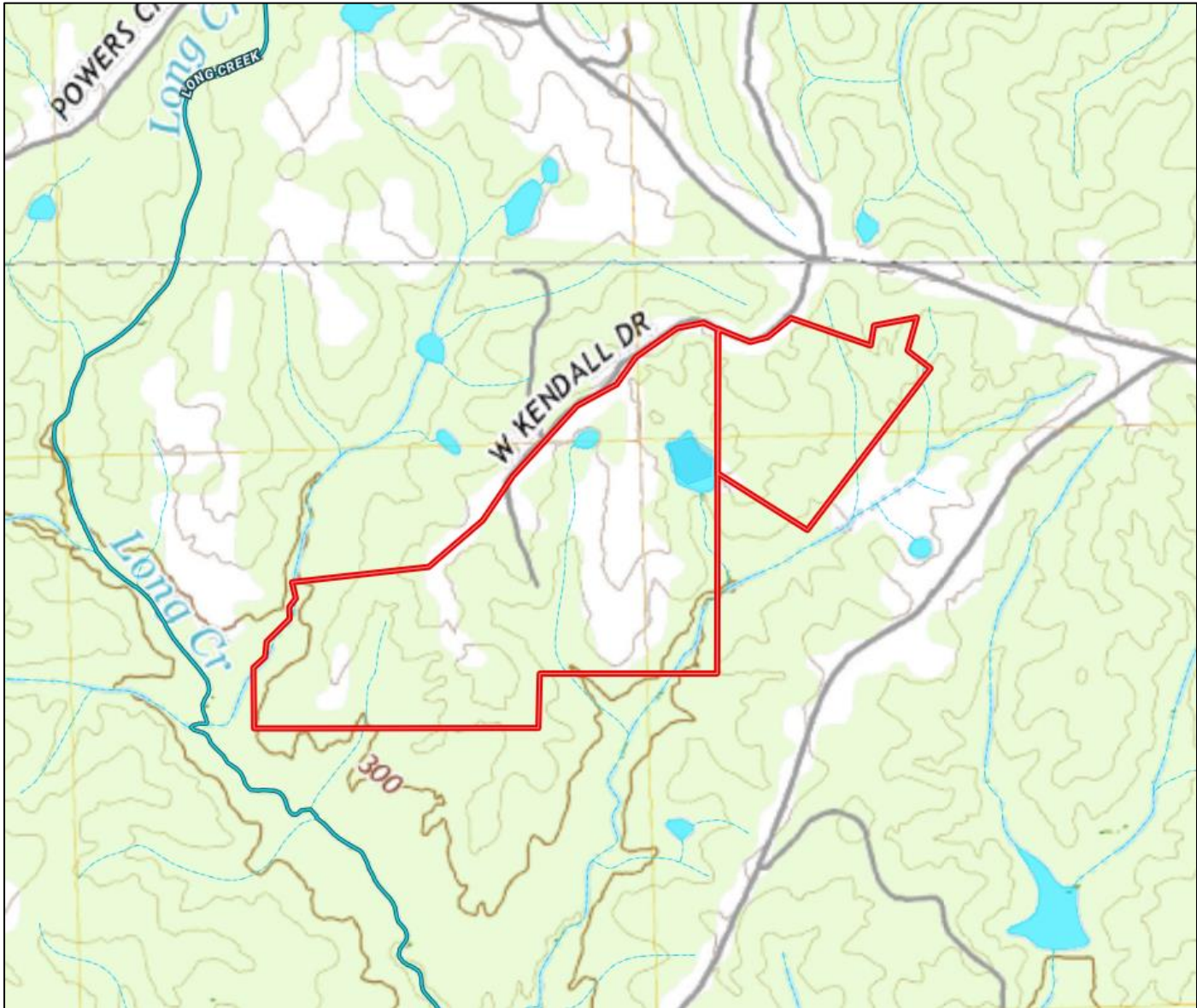
DOYES HOLLAND, REALTOR®
DHolland@TomSmithLand.com
662.268.6333 office | 662.312.2165 cell



TomSmithLandandHomes.com

Information is believed to be accurate but not guaranteed.

Topographical Map



LandReport
2011-2022
AMERICA'S
BEST
BROKERAGES

Call me today!

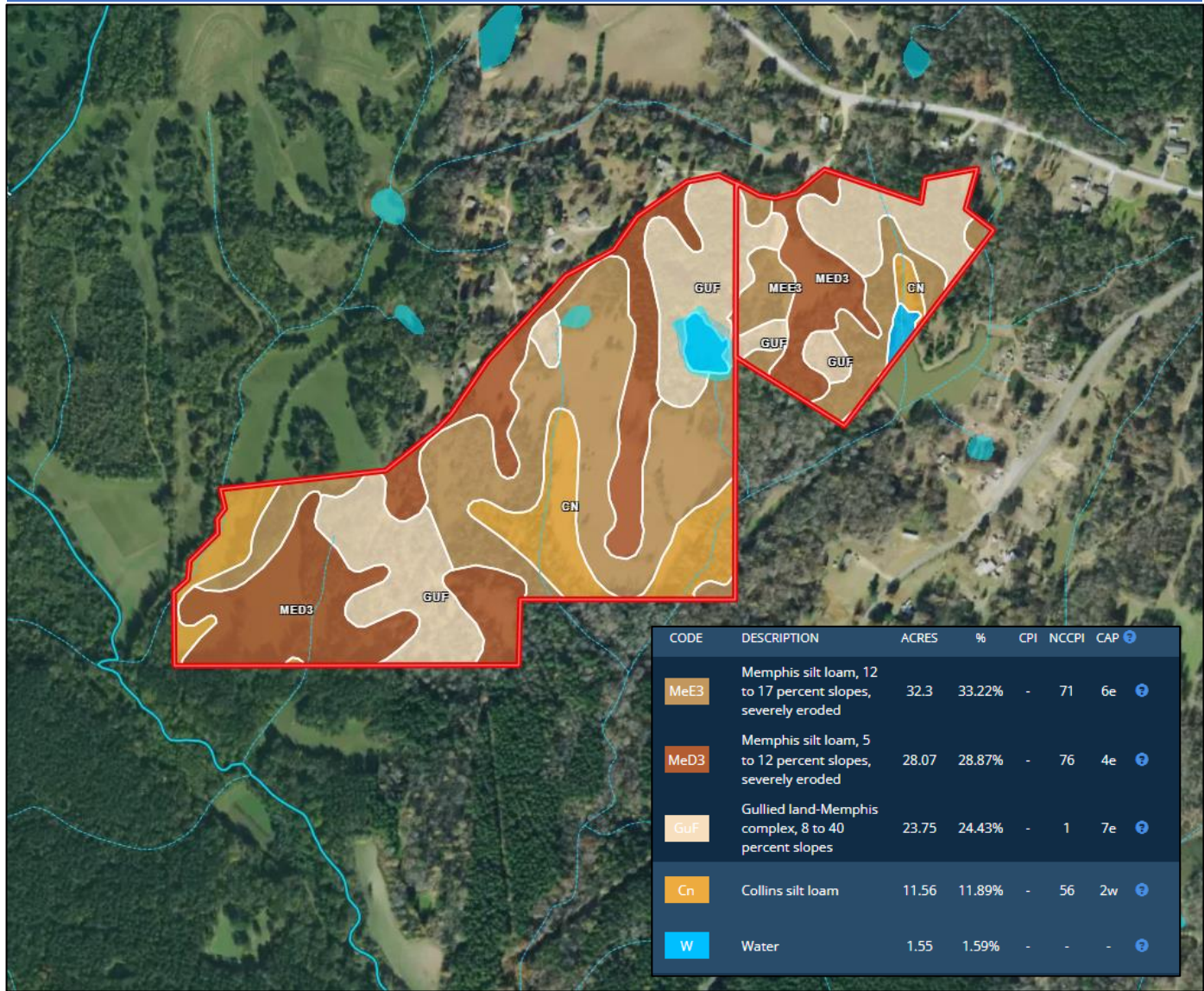
DOYES HOLLAND, REALTOR®
DHolland@TomSmithLand.com
662.268.6333 office | 662.312.2165 cell



TomSmithLandandHomes.com

Information is believed to be accurate but not guaranteed.

Soil Map



Call me today!

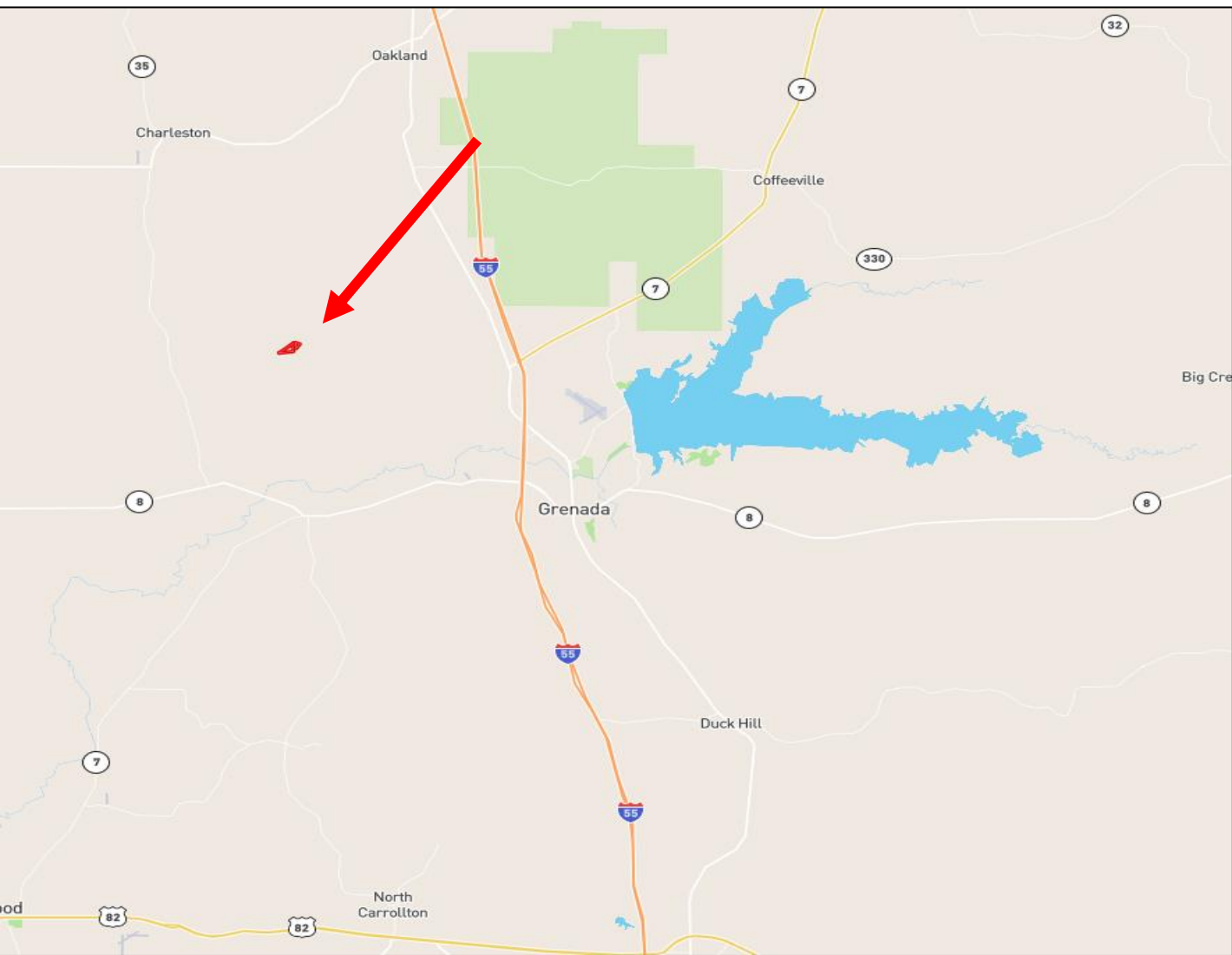
DOYES HOLLAND, REALTOR®
 DHolland@TomSmithLand.com
 662.268.6333 office | 662.312.2165 cell



TomSmithLandandHomes.com

Information is believed to be accurate but not guaranteed.

Directional Map



Directions from Hwy 51 and Hwy 7 intersection in Grenada, MS: Travel North on MS 51 for approximately 2.8 miles, turn left (West) on Casilla road 7.4 miles to West Kendal drive, then Southwest for approximately ½ mile, tract will be on left .

[Google Map Link](#)

Call me today!

DOYES HOLLAND, REALTOR®
DHolland@TomSmithLand.com
662.268.6333 office | 662.312.2165 cell



TomSmithLandandHomes.com

Information is believed to be accurate but not guaranteed.

