



7.95+/- Acre Commercial Lot with Hwy 49 South Frontage



\$495,000

Florence Drive, Florence, MS 39073

Introducing an incredible opportunity to invest in an 7.95 +/- acre undeveloped commercial lot (zoned C3) in Rankin County, MS! This prime piece of land boasts 386 feet of highway frontage on the highly trafficked, newly finished Hwy 49 South in Florence, making this property an ideal location for any business looking to capitalize on high visibility and an easy access area. The lot is loaded with mixed timber, adding natural beauty to the property and potential for future development. Take advantage of this rare chance to own a piece of the rapidly growing Florence market. Contact Clay today to schedule a viewing!

Directions from Jackson, MS: Take highway 49 south towards Florence. Turn left onto Florence Drive. Property on the right next to Trinity Bible Church.



Call me today!

CLAY SIMMONS, REALTOR®
Clay@TomSmithHomes.com
601.898.2772 **office** | 601.672.6864 **cell**



TomSmithLandandHomes.com

Information is believed to be accurate but not guaranteed.



LandReport
2011-2022
AMERICA'S
BEST
BROKERAGES

Call me today!

CLAY SIMMONS, REALTOR®
Clay@TomSmithHomes.com
601.898.2772 office | 601.672.6864 cell



TomSmithLandandHomes.com

Information is believed to be accurate but not guaranteed.



2011-2022
AMERICA'S
BEST
BROKERAGES

Call me today!

CLAY SIMMONS, REALTOR®
Clay@TomSmithHomes.com
601.898.2772 office | 601.672.6864 cell



TomSmithLandandHomes.com

Information is believed to be accurate but not guaranteed.



Aerial Map



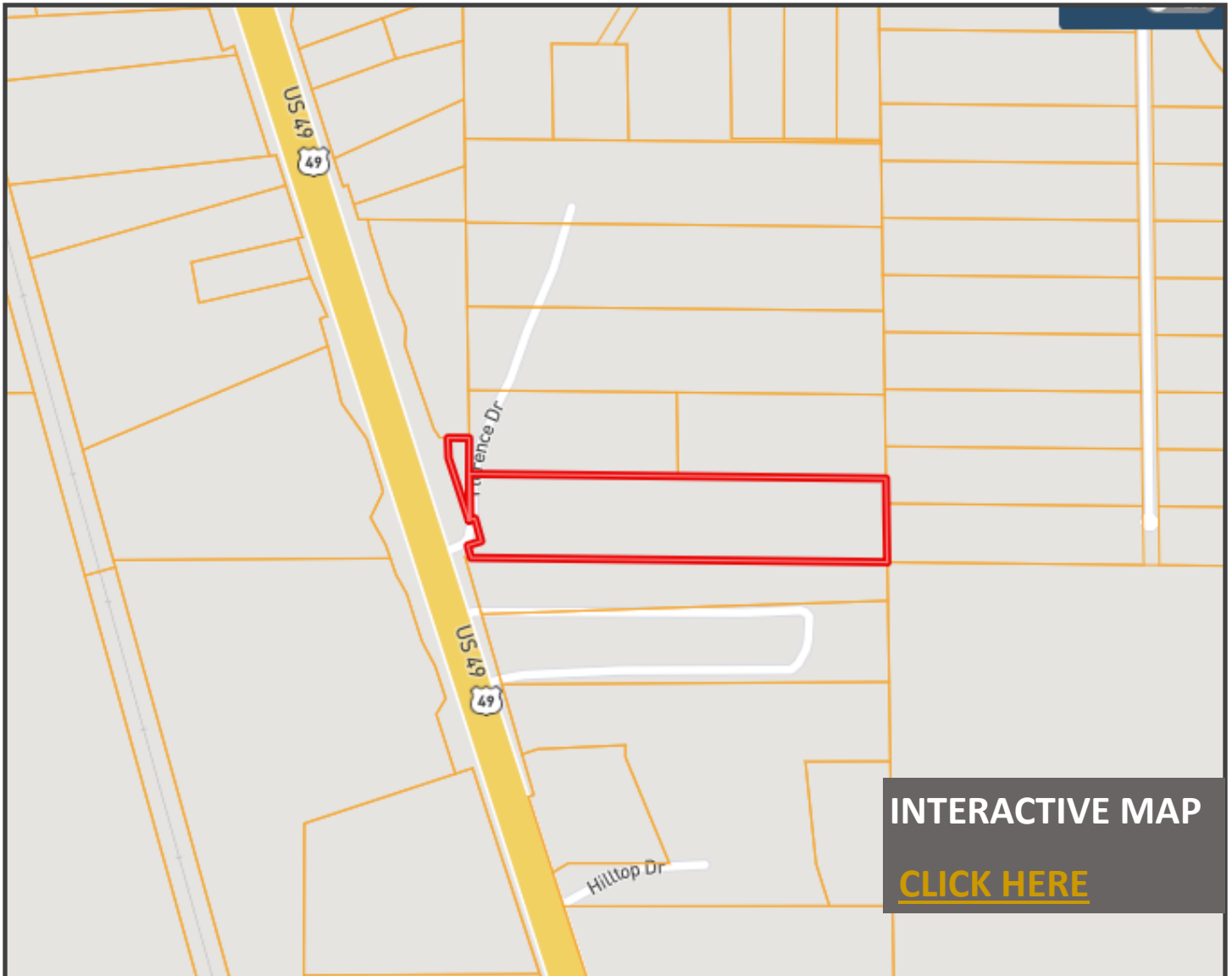
Call me today!

CLAY SIMMONS, REALTOR®
Clay@TomSmithHomes.com
601.898.2772 office | 601.672.6864 cell



TomSmithLandandHomes.com

Information is believed to be accurate but not guaranteed.



Ownership Map



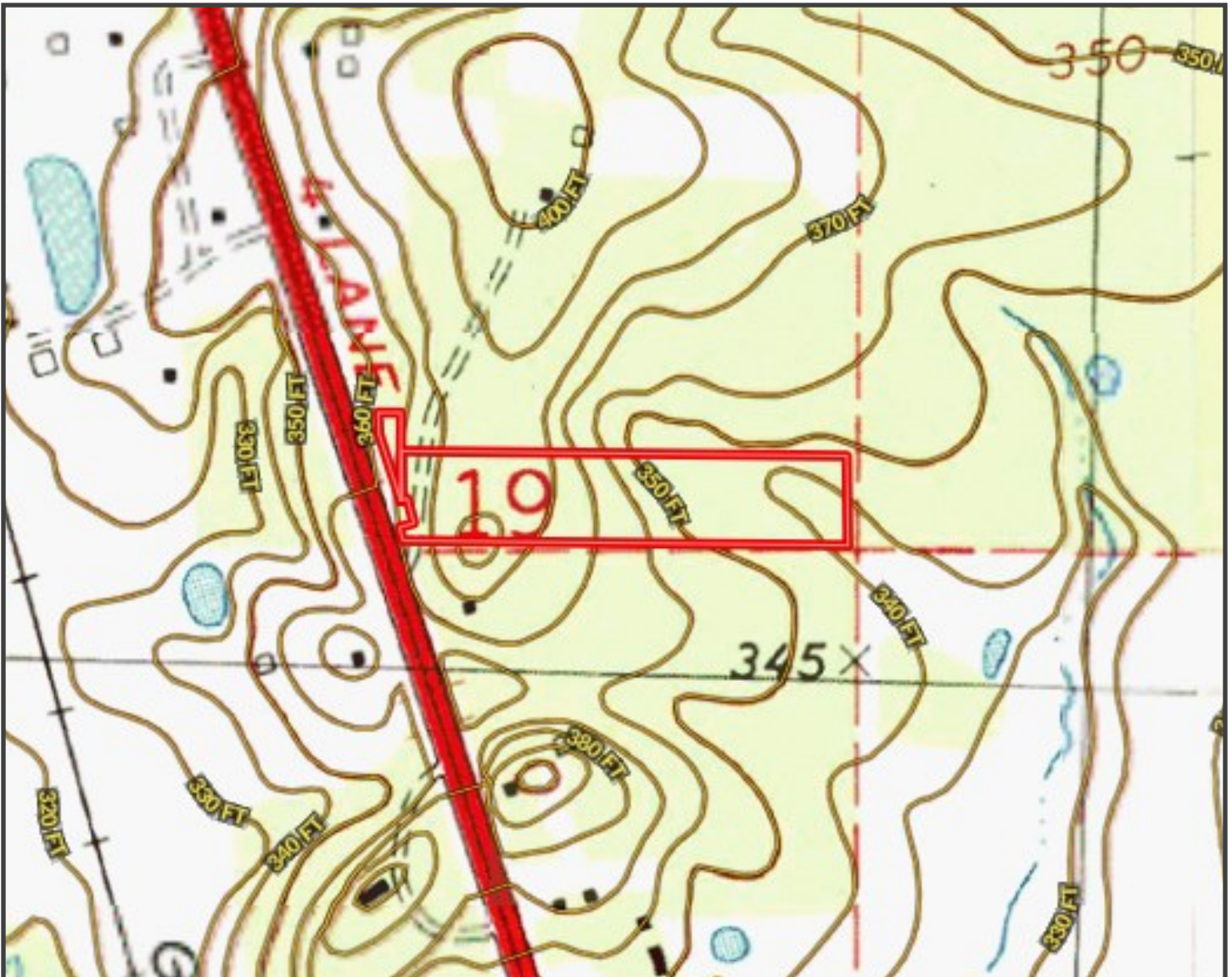
Call me today!

CLAY SIMMONS, REALTOR®
Clay@TomSmithHomes.com
601.898.2772 office | 601.672.6864 cell



TomSmithLandandHomes.com

Information is believed to be accurate but not guaranteed.



Topography Map



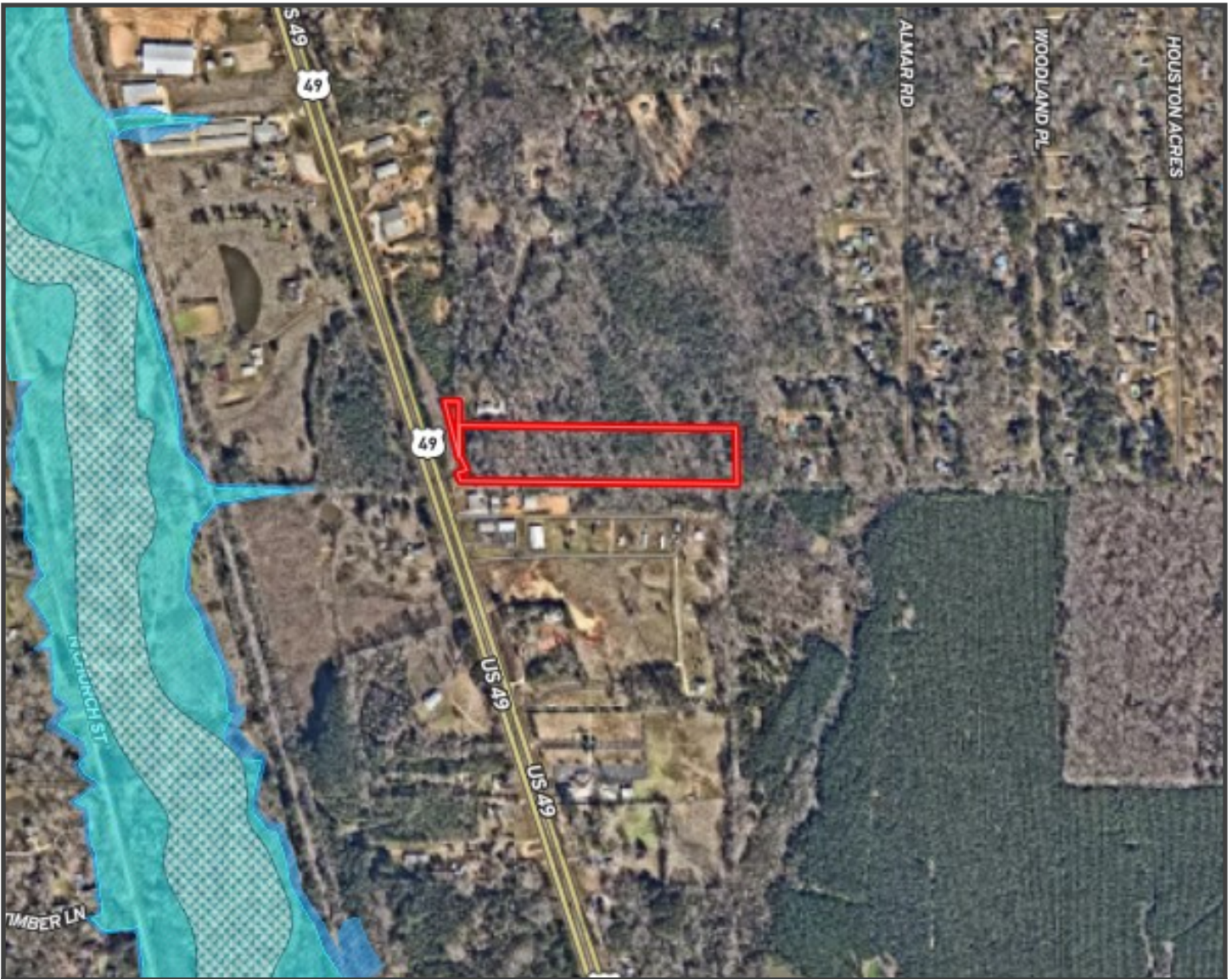
Call me today!

CLAY SIMMONS, REALTOR®
Clay@TomSmithHomes.com
601.898.2772 office | 601.672.6864 cell



TomSmithLandandHomes.com

Information is believed to be accurate but not guaranteed.



Flood Map



Call me today!

CLAY SIMMONS, REALTOR®
Clay@TomSmithHomes.com
601.898.2772 office | 601.672.6864 cell



TomSmithLandandHomes.com

Information is believed to be accurate but not guaranteed.



Soil Map



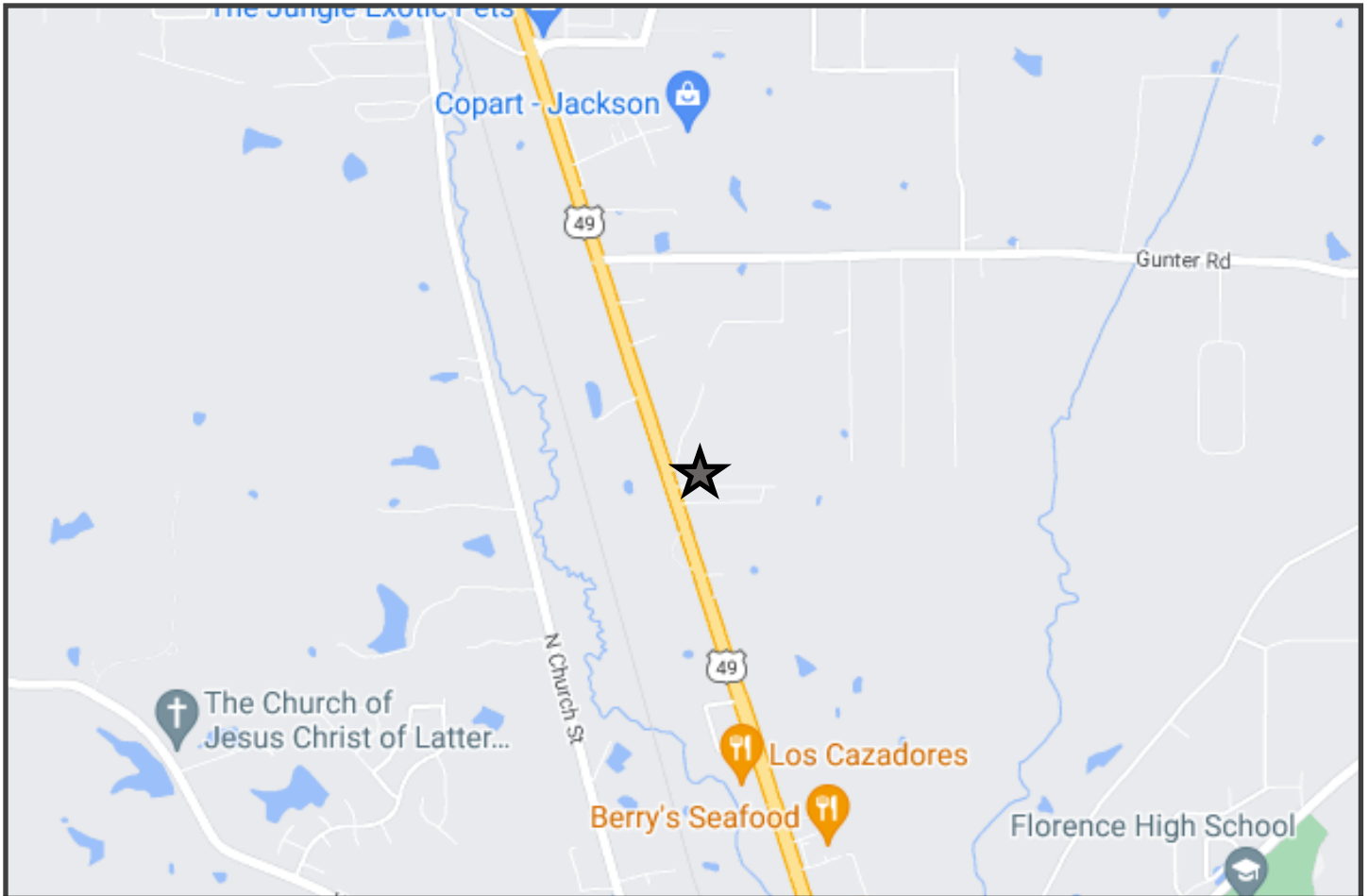
Call me today!

CLAY SIMMONS, REALTOR®
 Clay@TomSmithHomes.com
 601.898.2772 office | 601.672.6864 cell



TomSmithLandandHomes.com

Information is believed to be accurate but not guaranteed.



Directional Map

[GOOGLE MAP LINK](#)

Florence Drive, Florence, MS 39073

Directions from Jackson, MS: Take highway 49 south towards Florence. Turn left onto Florence Drive. Property on the right next to Trinity Bible Church.



Call me today!

CLAY SIMMONS, REALTOR®
Clay@TomSmithHomes.com
601.898.2772 office | 601.672.6864 cell



TomSmithLandandHomes.com

Information is believed to be accurate but not guaranteed.